

Vermont Agency of Transportation

**RECEIVED**

ON: June 24, 2015

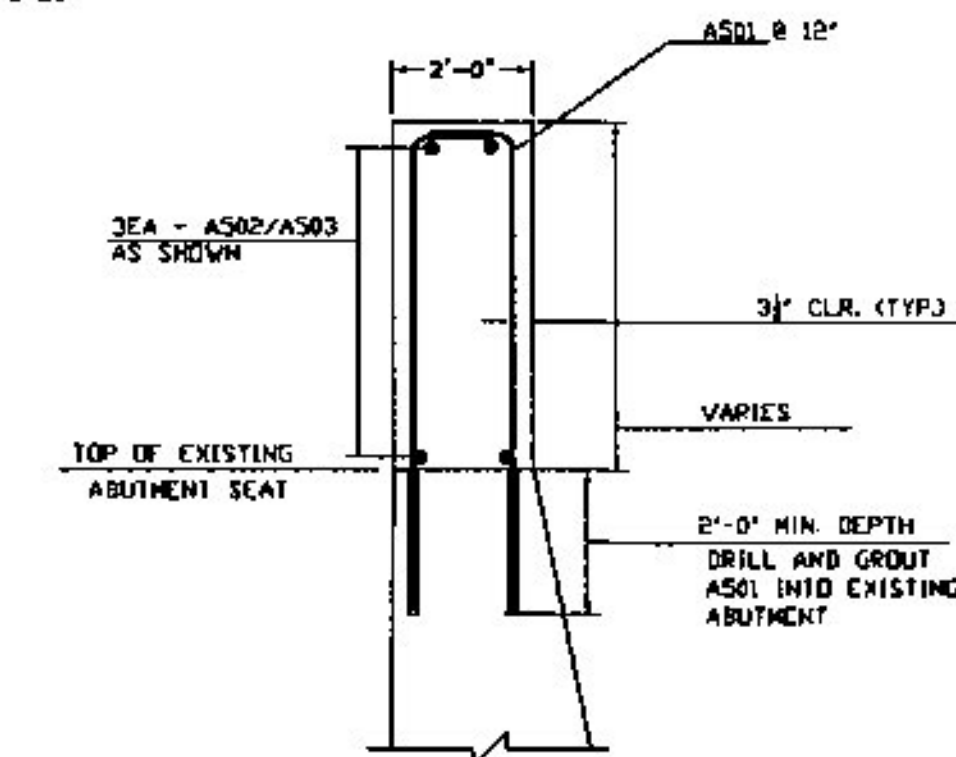
and Checked for

**CONFORMANCE**

BY: D. PETERSON DATE: 06/25/2015

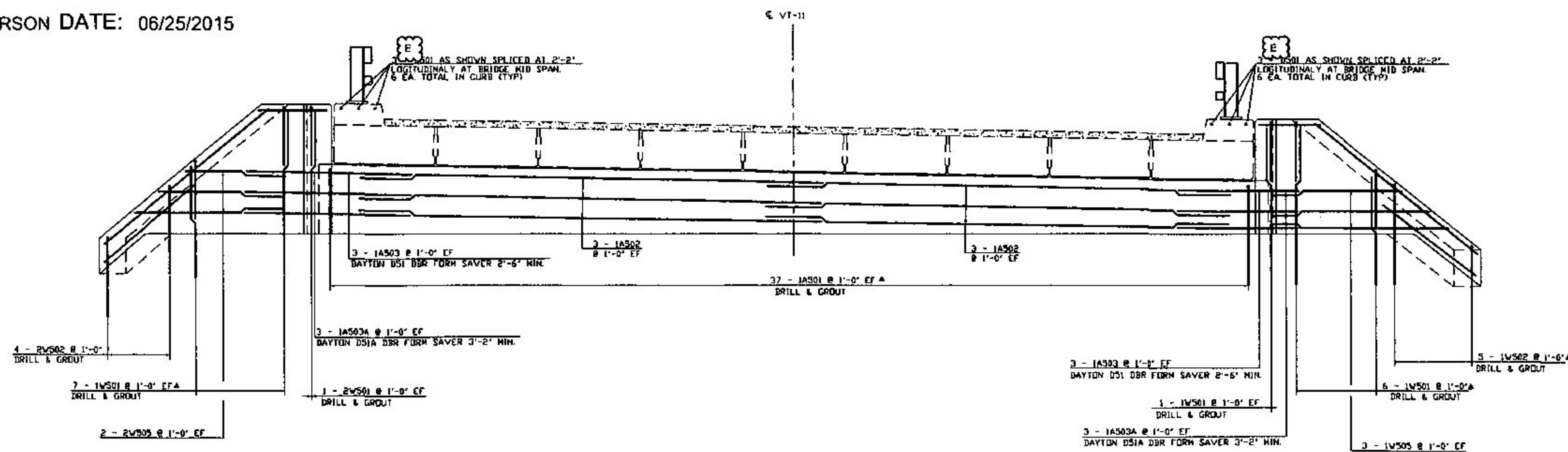
**ABUTMENT NO. 1 BELOW BRIDGE SEAT REINFORCING LAYOUT**

SCALE 3/8" = 1'-0"



**ABUTMENT TYPICAL**

SCALE 3/8" = 1'-0"



**ABUTMENT NO. 1 REINFORCING ELEVATION**

SCALE 3/8" = 1'-0"

**NOTE:**

NF = NEAR FACE  
 FF = FAR FACE  
 EF = EACH FACE  
 ▲ = CUT TO FIT IN FIELD  
 3" CLEAR, UNLESS OTHERWISE SPECIFIED ON THE PLANS.  
 2'-2" BAR LAP UNLESS OTHERWISE SPECIFIED ON THE PLANS.

DRILL AND GROUT ABUTMENT AS SHOWN IN THE "ABUTMENT TYPICAL" ON THIS SHEET

DRILL AND GROUT WINGWALLS AS SHOWN IN THE "WINGWALL TYPICAL" ON "WINGWALL 1 & 2 REINFORCING" SHEET

SHEET NAME: **ABUTMENT 1 REINFORCING**

PROJECT NAME: **ANDOVER**

PROJECT NO: **BHF 016-1 (29)**

DRAWN BY: **CE**    CHK'D BY:    DATE: **06/03/2015**

SHEET NO.

**2**

OF

**7**

REV. NO.	DATE:
1	08/24/15

**RENAUD BROS. INC.**  
 285 P. PROCEMAN RD. VERMONT VT. 05264  
 PH (802) 297-7989 FAX (802) 297-7508