

GPS CONTROL POINTS

HVCTRL #1

SIMONSVILLE  
 NORTH = 276627.440  
 EAST = 1583690.570  
 ELEV. = 1137.542

GENERAL LOCATION ANDOVER, VT. IN THE VILLAGE OF SIMONSVILLE. TO REACH FROM THE INTERSECTION OF VT. ROUTES 121 AND 11 IN NORTH WINDHAM (LONDONDERRY) GO NORTHEAST ALONG VT. ROUTE 11 FOR 3.4 MI (5.5 KM) TO THE SITE OF THE MARK ON THE LEFT IN A ROCK OUTCROP IN A GRASSY AREA. IT IS 0.3 MI (0.5 KM) WEST OF THE INTERSECTION OF VT. ROUTE 11 AND HILL TOP ROAD (NORTH) AND HOWARD HILL ROAD (SOUTH). THE MARK IS SET IN THE TOP OF A 0.8 X 0.6 M (2.0 FT) ROCK OUTCROP. IT IS 5.5 M (18.0 FT) NORTH OF AND ABOUT 0.3 M (1.0 FT) LOWER THAN THE NORTH EDGE OF PAVEMENT OF VT. ROUTE 11, 33.3 M (109.3 FT) NORTHWEST OF POLE NO. 237, 39.4 M (129.3 FT) NORTHEAST OF POLE NO. 242/227, AND 1.6 M (5.2 FT) SOUTH OF A FIBERGLASS WITNESS POST.

HVCTRL #2

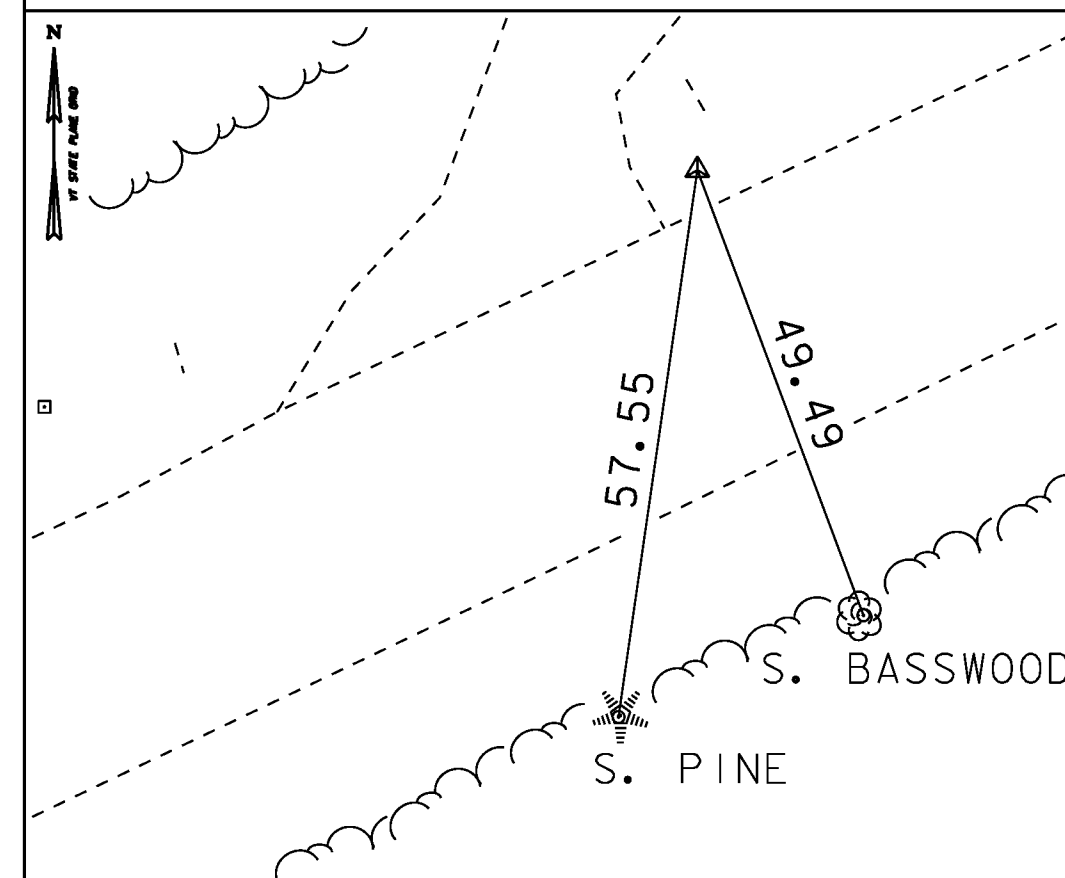
SIMONSVILLE AZ MK  
 NORTH = 276452.330  
 EAST = 1585221.640  
 ELEV. = 1104.463

GENERAL LOCATION ANDOVER, VT. IN THE VILLAGE OF SIMONSVILLE. TO REACH FROM THE INTERSECTION OF VT. ROUTES 121 AND 11 IN NORTH WINDHAM (LONDONDERRY) GO NORTHEAST ALONG VT. ROUTE 11 FOR 3.7 MI (6.0 KM) TO THE INTERSECTION OF HOWARD HILL ROAD RIGHT AND THE SITE OF THE MARK ON THE RIGHT. THE MARK IS SET 2 CM BELOW GROUND SURFACE IN THE TOP OF 30 CM DIAMETER CONCRETE MONUMENT SET 1.1 M (3.6 FT) DEEP. IT IS 16.3 M (53.5 FT) SOUTH OF AND ABOUT 0.3 M (1.0 FT) LOWER THAN THE CENTERLINE OF VT. ROUTE 11, 3.6 M (11.8 FT) EAST OF THE CENTERLINE OF HOWARD HILL ROAD, 11.3 M (37.1 FT) WEST OF THE NORTHWEST PORCH CORNER OF A 1 1/2 STORY WOOD FRAME HOUSE, 14.0 M (45.9 FT) EAST OF POLE NO. 1/230A/220-A, AND 1.8 M (5.9 FT) SOUTH OF A STOP SIGN AND A FIBERGLASS WITNESS POST.

TRAVERSE TIES

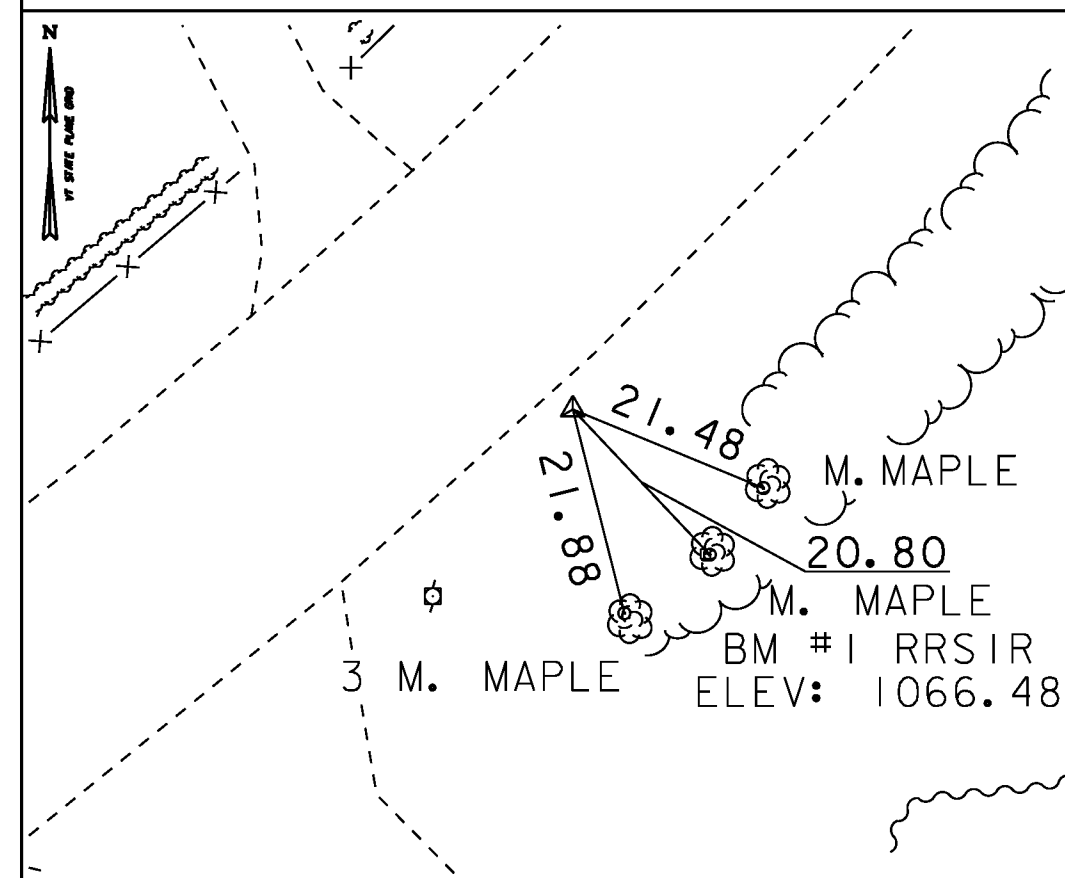
HVCTRL #3

NORTH = 277154.304  
 EAST = 1586402.825  
 ELEV. = 1077.701



HVCTRL #4

NORTH = 277421.339  
 EAST = 1586957.674  
 ELEV. = 1067.003



\*MAIN TRAVERSE COMPLETED 5/28/2012 BY R. GILMAN P.C. & P. WINTERS & C. CYR

ALIGNMENT TIES

NORTH =  
 EAST =  
 ELEV. =

NORTH =  
 EAST =  
 ELEV. =

NORTH =  
 EAST =  
 ELEV. =

NORTH =  
 EAST =  
 ELEV. =

NORTH =  
 EAST =  
 ELEV. =

DATUM	
VERTICAL	NAVD 88
HORIZONTAL	NAD 83 (96)
ADJUSTMENT	NONE

PROJECT NAME: ANDOVER	
PROJECT NUMBER: BHF 016-1(29)	
FILE NAME: sl2b140+1e.dgn	PLOT DATE: 06-JAN-2015
PROJECT LEADER: C. CARLSON	DRAWN BY: S. PIRO
DESIGNED BY: D. PETERSON	CHECKED BY: D. PETERSON
TIE	SHEET 10 OF 48