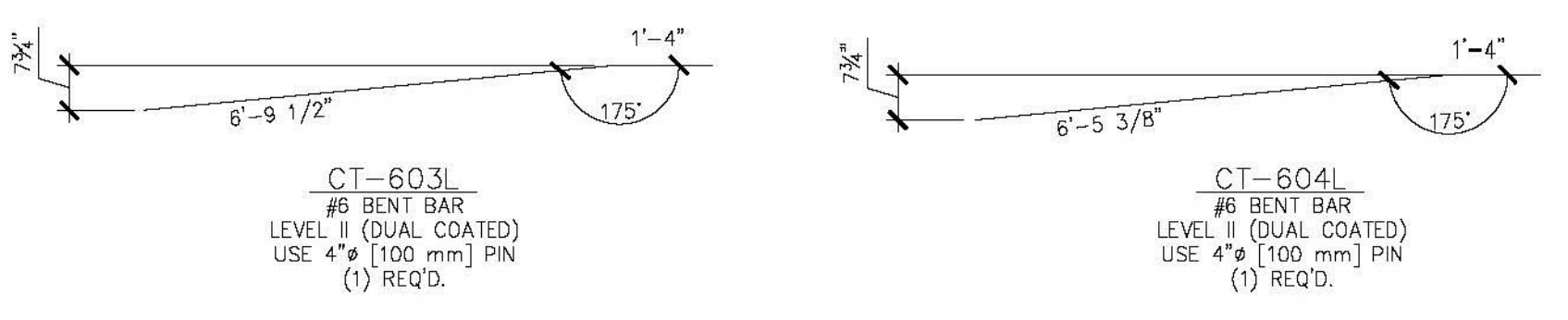
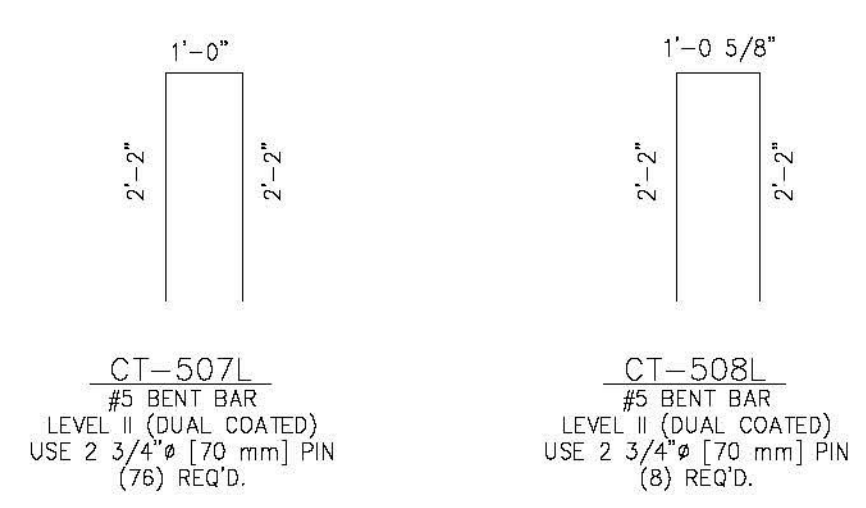
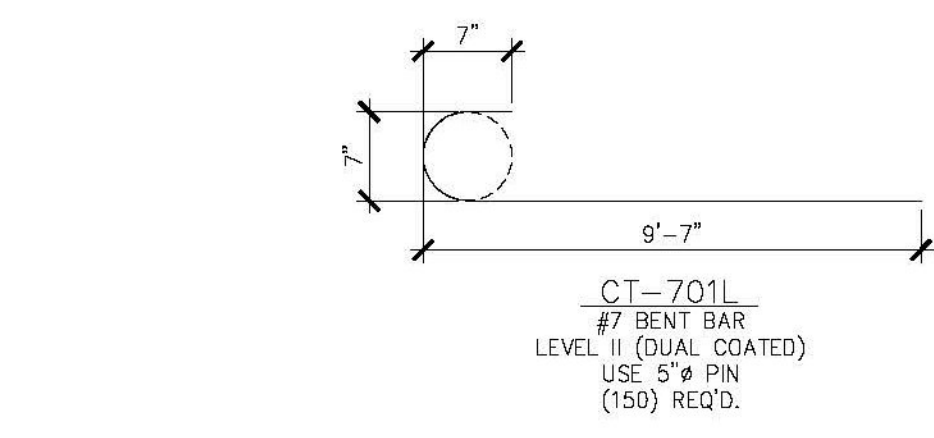
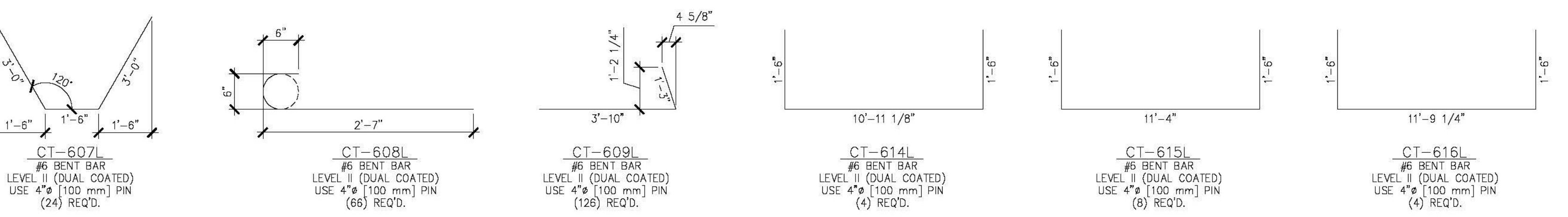
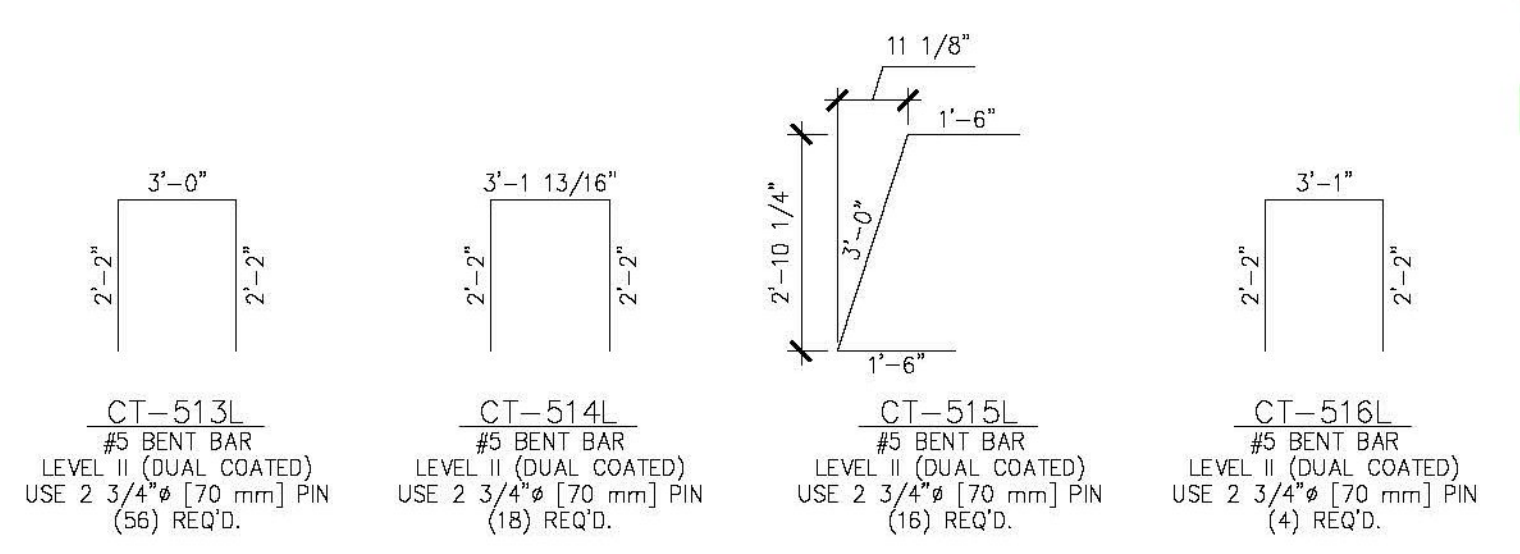
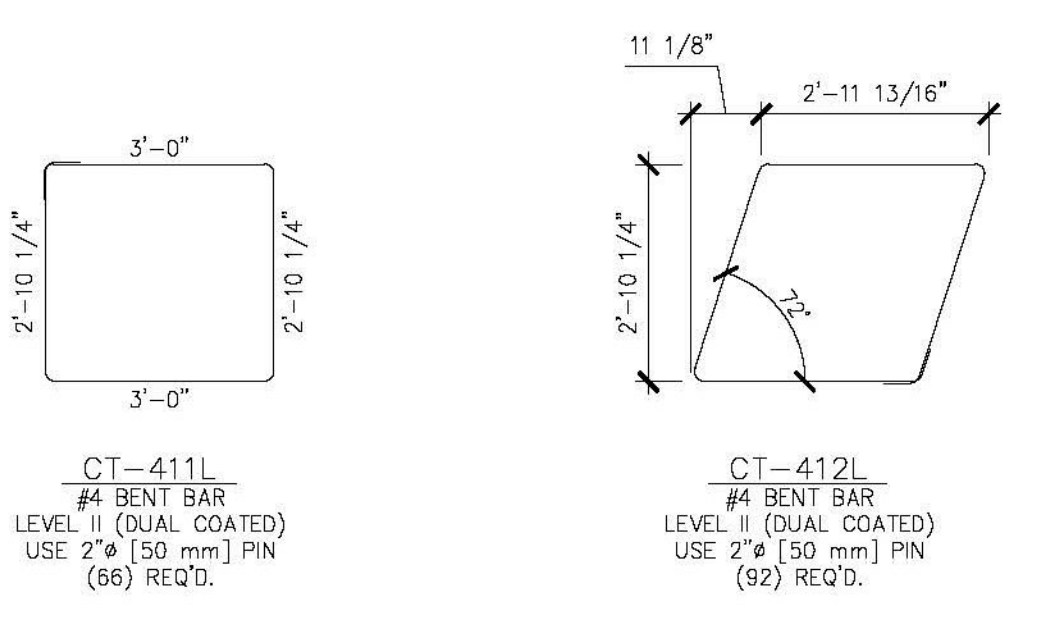


PRECAST APPROACH SLABS



PRECAST WINGWALLS



PRECAST ABUTMENTS

**\*\* DENOTES (1) ADDITIONAL BAR ORDERED FOR SAMPLING**

APPROACH SLAB MISCELLANEOUS MATERIALS				
ITEM	MARK	QTY.	DESCRIPTION	REMARKS
1		64	#6 x 19'-6" (LEVEL II, DUAL COATED)	
2				
3	MK-CT1	24	4T x 7 1/8" SWIFT LIFT LIFTER	
4				
5		40	4" O.D. x 1'-3" PVC SLEEVE	

WINGWALLS MISCELLANEOUS MATERIALS				
ITEM	MARK	QTY.	DESCRIPTION	REMARKS
1		2	#5 x 10'-11" (LEVEL II, DUAL COATED)	
2		4	#5 x 11'-6" (LEVEL II, DUAL COATED)	
3		2	#5 x 11'-10" (LEVEL II, DUAL COATED)	
4		29	#6 x 7'-9" (LEVEL II, DUAL COATED)	
5		29	#6 x 8'-0" (LEVEL II, DUAL COATED)	
6		16	#6 x 8'-9" (LEVEL II, DUAL COATED)	
7		16	#6 x 9'-0" (LEVEL II, DUAL COATED)	
8		1	#6 x 9'-1" (LEVEL II, DUAL COATED)	
9		16	#6 x 9'-3" (LEVEL II, DUAL COATED)	
10		1	#6 x 9'-4" (LEVEL II, DUAL COATED)	
11		16	#6 x 9'-6" (LEVEL II, DUAL COATED)	
12		1	#6 x 9'-7" (LEVEL II, DUAL COATED)	
13		1	#6 x 9'-10" (LEVEL II, DUAL COATED)	
14		22	#6 x 10'-11" (LEVEL II, DUAL COATED)	
15		22	#6 x 11'-6" (LEVEL II, DUAL COATED)	
16		26	#6 x 11'-8" (LEVEL II, DUAL COATED)	
17		24	#6 x 12'-1" (LEVEL II, DUAL COATED)	
18	MK-CT3	126	NMB SPLICE SLEEVE BU-X(PC) (EPOXY COATED)	
19	MK-CT4	16	4T x 7 1/8" SWIFT LIFT LIFTER	
20	MK-CT5	8	8T x 13 3/8" SWIFT LIFT LIFTER	
21		1	BRIDGE PLAQUE (SUPPLIED BY OTHERS)	

ABUTMENT MISCELLANEOUS MATERIALS				
ITEM	MARK	QTY.	DESCRIPTION	REMARKS
1		4	#8 x 22'-1" (LEVEL II, DUAL COATED)	
2		4	#8 x 21'-2" (LEVEL II, DUAL COATED)	
3		11	#7 x 11'-10" (LEVEL II, DUAL COATED)	
4		22	#7 x 11'-6" (LEVEL II, DUAL COATED)	
5		11	#7 x 10'-11" (LEVEL II, DUAL COATED)	
6		29	#7 x 9'-9" (LEVEL II, DUAL COATED)	
7		29	#7 x 9'-3" (LEVEL II, DUAL COATED)	
8		4	#6 x 11'-10" (LEVEL II, DUAL COATED)	
9		8	#6 x 11'-6" (LEVEL II, DUAL COATED)	
10		4	#6 x 10'-11" (LEVEL II, DUAL COATED)	
11		35	#5 x 22'-1" (LEVEL II, DUAL COATED)	
12		35	#5 x 21'-2" (LEVEL II, DUAL COATED)	
13				
14				
15				
16				
17		1	2'-0" # x 9'-0 1/16" CORRUGATED STEEL PIPE (GALV.)	
18		1	2'-0" # x 8'-11 13/16" CORRUGATED STEEL PIPE (GALV.)	
19		1	2'-0" # x 8'-11 7/16" CORRUGATED STEEL PIPE (GALV.)	
20		1	2'-0" # x 8'-10 13/16" CORRUGATED STEEL PIPE (GALV.)	
21		1	2'-0" # x 8'-9 7/16" CORRUGATED STEEL PIPE (GALV.)	
22		1	2'-0" # x 8'-7 1/16" CORRUGATED STEEL PIPE (GALV.)	
23		1	2'-0" # x 8'-6 13/16" CORRUGATED STEEL PIPE (GALV.)	
24		1	2'-0" # x 8'-6 3/16" CORRUGATED STEEL PIPE (GALV.)	
25		1	2'-0" # x 8'-5 13/16" CORRUGATED STEEL PIPE (GALV.)	
26		1	2'-0" # x 8'-5 9/16" CORRUGATED STEEL PIPE (GALV.)	
27		1	2'-0" # x 8'-3 7/16" CORRUGATED STEEL PIPE (GALV.)	
28		1	2'-0" # x 8'-1 1/16" CORRUGATED STEEL PIPE (GALV.)	
29	MK-CT2	8	20T x 19 3/4" SWIFT LIFT LIFTER	
30		48	1/2" SINGLE USE STRESSING CHUCK (GALV.)	FOR ERECTION
31	EM-CT1	24	PL. 1" x 6" x 6" W(2) 3/4" HOLES (GALV.)	FOR ERECTION, SEE DETAIL THIS SHEET
32		24	1/2" # x 47'-0" POLY-STRAND	FOR ERECTION
33				
34				

Vermont Agency of Transportation  
**RECEIVED**  
 ON: **May 26, 2015**  
 and Checked for  
**CONFORMANCE**  
 BY: Jennifer Fitch DATE: 05/28/2015

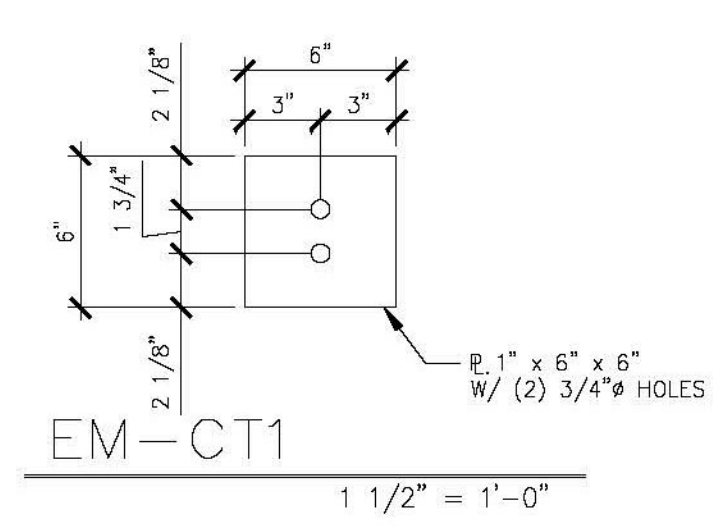
**SHOP DRAWING REVIEW**

**X** REVIEWED AS REQUIRED BY THE CONSTRUCTION CONTRACT DOCUMENTS AND APPROVED, BUT ONLY FOR CONFORMANCE TO THE DESIGN CONCEPT OF THE WORK, AND SUBJECT TO FURTHER LIMITATIONS AND REQUIREMENTS CONTAINED IN THE CONSTRUCTION CONTRACT DOCUMENTS.

REJECTED     REVISE AND RESUBMIT     FURNISH AS CORRECTED

CORRECTIONS OR COMMENTS MADE ON THE SHOP DRAWINGS DURING THIS REVIEW DO NOT RELIEVE CONTRACTOR FROM COMPLIANCE WITH REQUIREMENTS OF THE DRAWINGS AND SPECIFICATIONS. THIS CHECK IS ONLY FOR REVIEW OF GENERAL CONFORMANCE WITH THE DESIGN CONCEPT OF THE PROJECT AND GENERAL COMPLIANCE WITH THE INFORMATION GIVEN IN THE CONTRACT DOCUMENTS. THE CONTRACTOR IS RESPONSIBLE FOR CONFIRMING AND CORRELATING ALL QUANTITIES AND DIMENSIONS, SELECTING FABRICATION PROCESSES AND TECHNIQUES OF CONSTRUCTION, COORDINATING HIS WORK WITH THAT OF ALL OTHER TRADES, AND PERFORMING HIS WORK IN A SAFE AND SATISFACTORY MANNER.

**vhb** 40 DOR Drive Building 100, Suite 200 South Burlington, VT 05403 802.497.6100    Job Number: 57832.00    Reviewed By: E.F. LAWES    Date: May 27, 2015



APPROVAL STAMP:  
 1  
 Revision 1-6-15

<b>J.P. CARRARA &amp; SONS INC.</b> Precast & Prestress Manufacturer 2464 CASE STR., MIDDLEBURY, VERMONT 05753 Phone:(802)368-6361 Fax:(802)388-9010		<b>SCHULTZ CONSTRUCTION</b> CONTRACTOR BALLSTON SPA, NY	
STATE OF VERMONT AGENCY OF TRANSPORTATION COUNTY OF RUTLAND		DATE: MAY 06, 2015 SCALE: NOTED	
TOWN OF CASTLETON VT ROUTE 30 (RURAL MINOR ARTERIAL) BRIDGE NO.: 93 PROJECT NO.: BRF 015-2(10)		CHKD: R.M.    DFTM: PSS JOB NO: 23456-015	
<b>MATERIALS LIST</b> (ABUTMENTS, WING WALLS & APPROACH SLABS)		DWG. NO: <b>M2</b>	