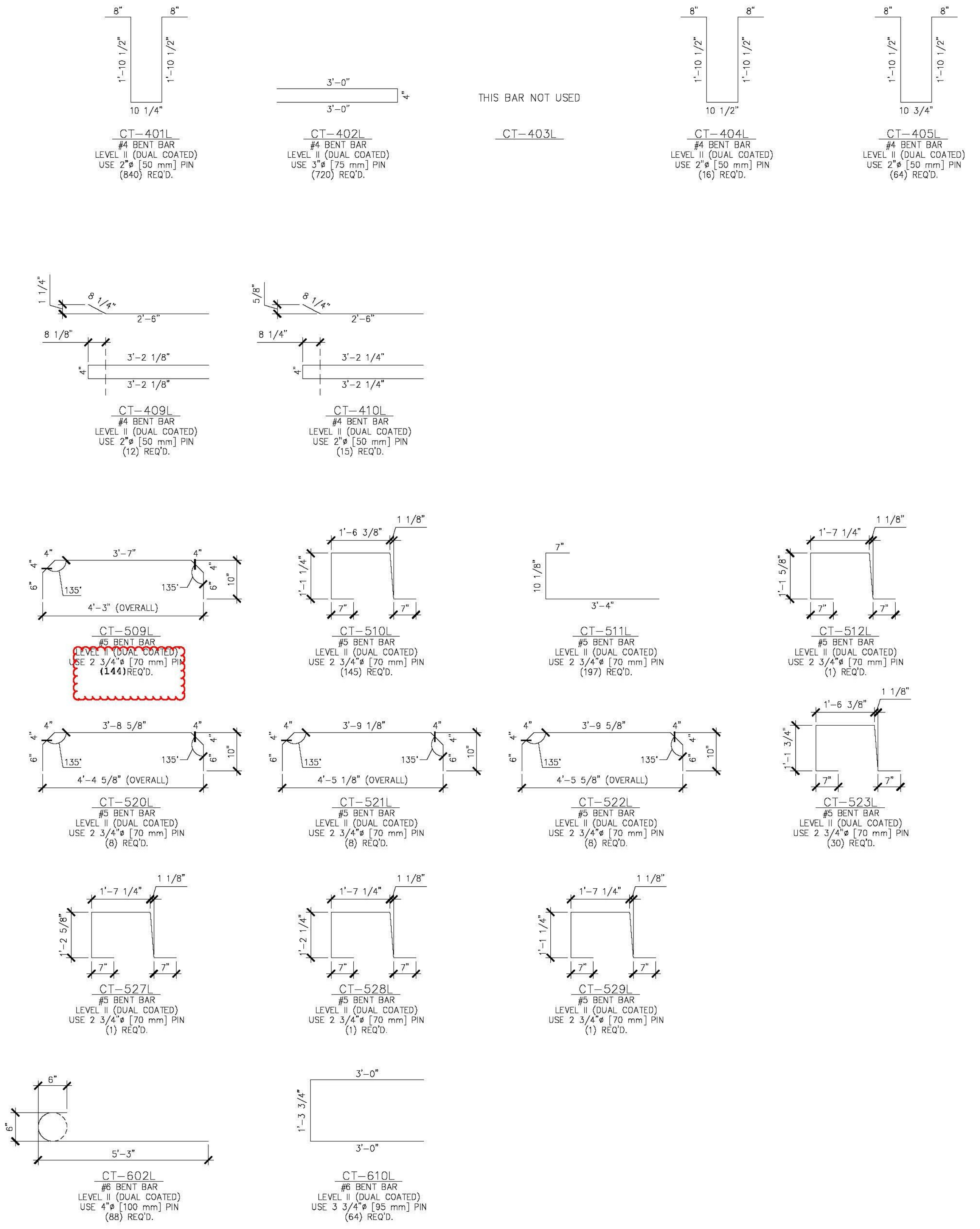
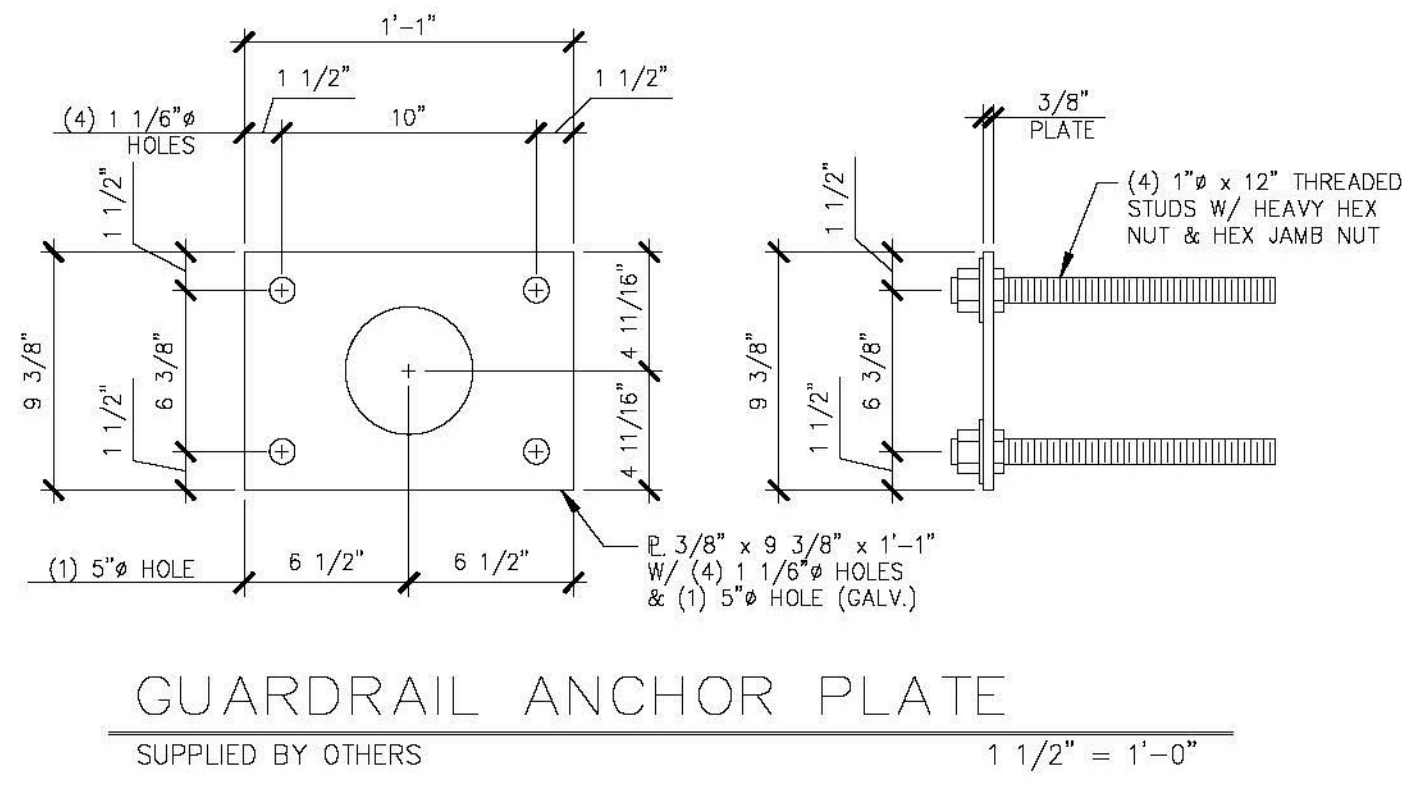


NEXT BEAM MISCELLANEOUS MATERIALS				
ITEM	MARK	QTY.	DESCRIPTION	REMARKS
** 1		112	#4 x 8'-1 1/2" (LEVEL II, DUAL COATED)	
2				
** 3		976	#5 x 7'-8 1/2" (LEVEL II, DUAL COATED)	
4		48	#5 x 7'-9" (LEVEL II, DUAL COATED)	
5		32	#5 x 7'-10" (LEVEL II, DUAL COATED)	
6		32	#5 x 7'-11" (LEVEL II, DUAL COATED)	
7		32	#5 x 8'-0" (LEVEL II, DUAL COATED)	
8		88	#6 x 6'-9" (W/ (1) 2'-2" STAGGERED LAP) (40' + 28'-11") (LVL. II, DUAL COATED)	
9		6	#5 x 6'-9" (W/ (1) 2'-2" STAGGERED LAP) (40' + 31'-9") (LVL. II, DUAL COATED)	IN PRECAST CONCRETE CURB CAST AS A SECONDARY POUR
10				
11				
12				
13				
14				
15				
16				
17				
18				
19				
20				
21				
22				
23				
24				
25				
26				
27				
28				
29				
30				
31				
32				
33				
34		16	SET OF (4) 1/2" x 270 KSI STRAND LIFTING LOOPS	
35		16	2" I.D. PVC SLEEVE	
36	MK-CT6	68	DAYTON B-16 1/2" x 3" LONG COIL LOOP INSERTS (ELECTROPLATED GALV.)	<b>By Others</b> SUPPLIED BY OTHERS, IN PRECAST CONCRETE CURB CAST AS A SECONDARY POUR
37		16	GUARDRAIL ANCHOR PLATE (GALV.)	
38				



PRESTRESSED NEXT BEAMS



Vermont Agency of Transportation  
**RECEIVED**  
 ON: **May 26, 2015**  
 and Checked for  
**CONFORMANCE**  
 BY: Jennifer Fitch DATE: 05/28/2015

1  
Revision 1.5.6.15

**SHOP DRAWING REVIEW**

REVIEWED AS REQUIRED BY THE CONSTRUCTION CONTRACT DOCUMENTS AND APPROVED, BUT ONLY FOR CONFORMANCE TO THE DESIGN CONCEPT OF THE WORK, AND SUBJECT TO FURTHER LIMITATIONS AND REQUIREMENTS CONTAINED IN THE CONSTRUCTION CONTRACT DOCUMENTS.  
 REJECTED     REVISE AND RESUBMIT     FURNISH AS CORRECTED

CORRECTIONS OR COMMENTS MADE ON THE SHOP DRAWINGS DURING THIS REVIEW DO NOT RELIEVE CONTRACTOR FROM COMPLIANCE WITH REQUIREMENTS OF THE SPECIFICATIONS AND DRAWINGS. THIS CHECK IS ONLY FOR REVIEW OF GENERAL CONFORMANCE WITH THE DESIGN CONCEPT OF THE PRODUCT AND GENERAL COMPLIANCE WITH THE INFORMATION GIVEN IN THE CONTRACT DOCUMENTS. THE CONTRACTOR IS RESPONSIBLE FOR CONFIRMING AND CORRELATING ALL QUANTITIES AND DIMENSIONS, SELECTING FABRICATION PROCESSES AND TECHNIQUES OF CONSTRUCTION, CONSIDERING HIS WORK WITH THAT OF ALL OTHER TRADES, AND PERFORMING HIS WORK IN A SAFE AND SATISFACTORY MANNER.

40 IDX Drive  
 Building 100, Suite 200  
 South Burlington, VT 05403  
 802-497-6100

Job Number: 57632.00  
 Reviewed By: E.F. LAMES  
 Date: May 27, 2015

<b>J.P. CARRARA &amp; SONS INC.</b> Precast & Prestress Manufacturer 2464 GAGE ST., MIDDLEBURY, VERMONT 05753 Phone: (802)388-6361 Fax: (802)388-9010		<b>SCHULTZ CONSTRUCTION</b> CONTRACTOR BALLSTON SPA, NY	
STATE OF VERMONT AGENCY OF TRANSPORTATION COUNTY OF RUTLAND		DATE: MAY 06, 2015 SCALE: NOTED	
TOWN OF CASTLETON VT ROUTE 30 (RURAL MINOR ARTERIAL) BRIDGE NO.: 93 PROJECT NO.: BRF 015-2(10)		CHKD: R.M.	DFTM: PSS
MATERIALS LIST (NEXT BEAMS)		JOB NO: 23456-015	DWG. NO: M1

**\*\* DENOTES (1) ADDITIONAL BAR ORDERED FOR SAMPLING**