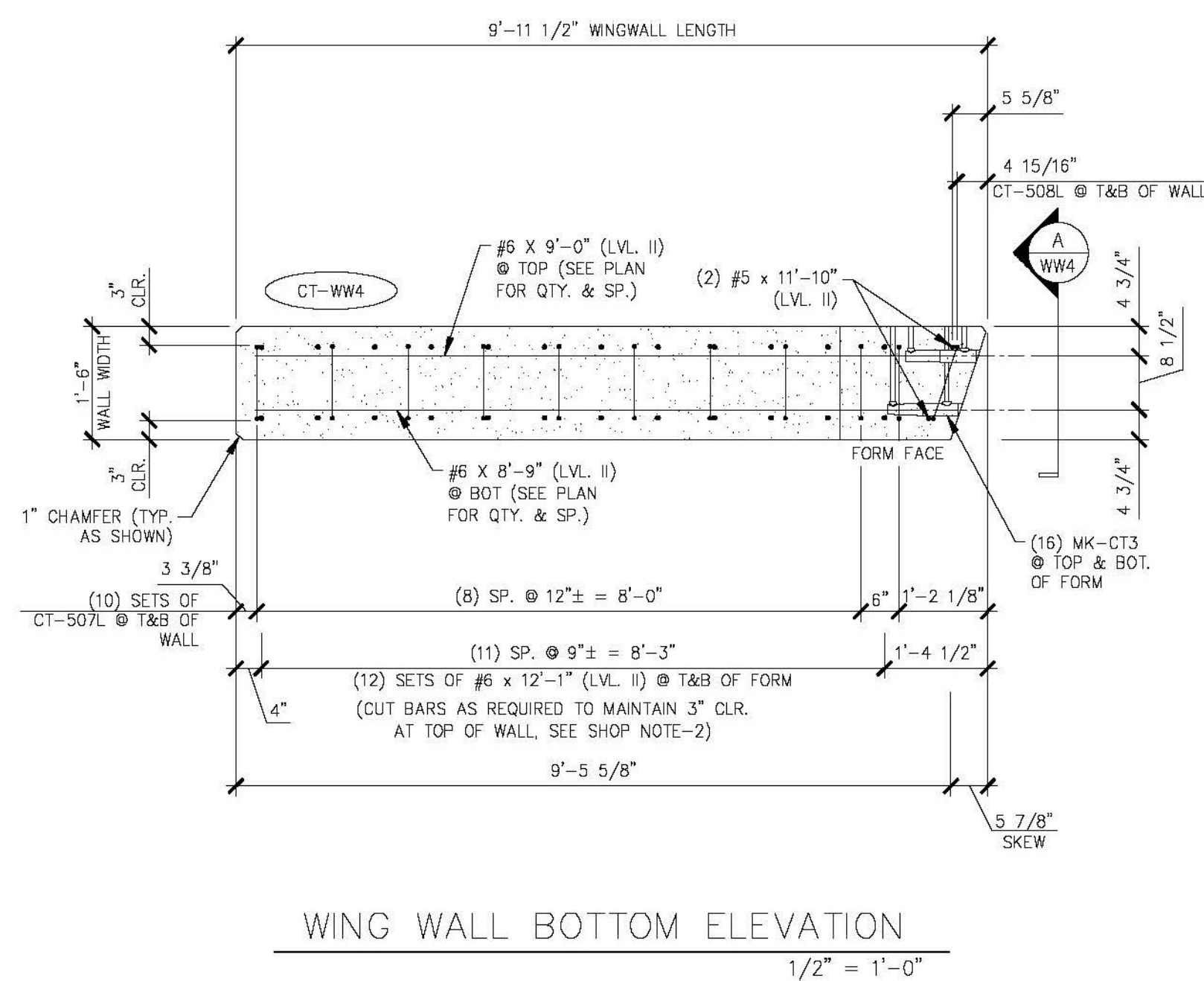
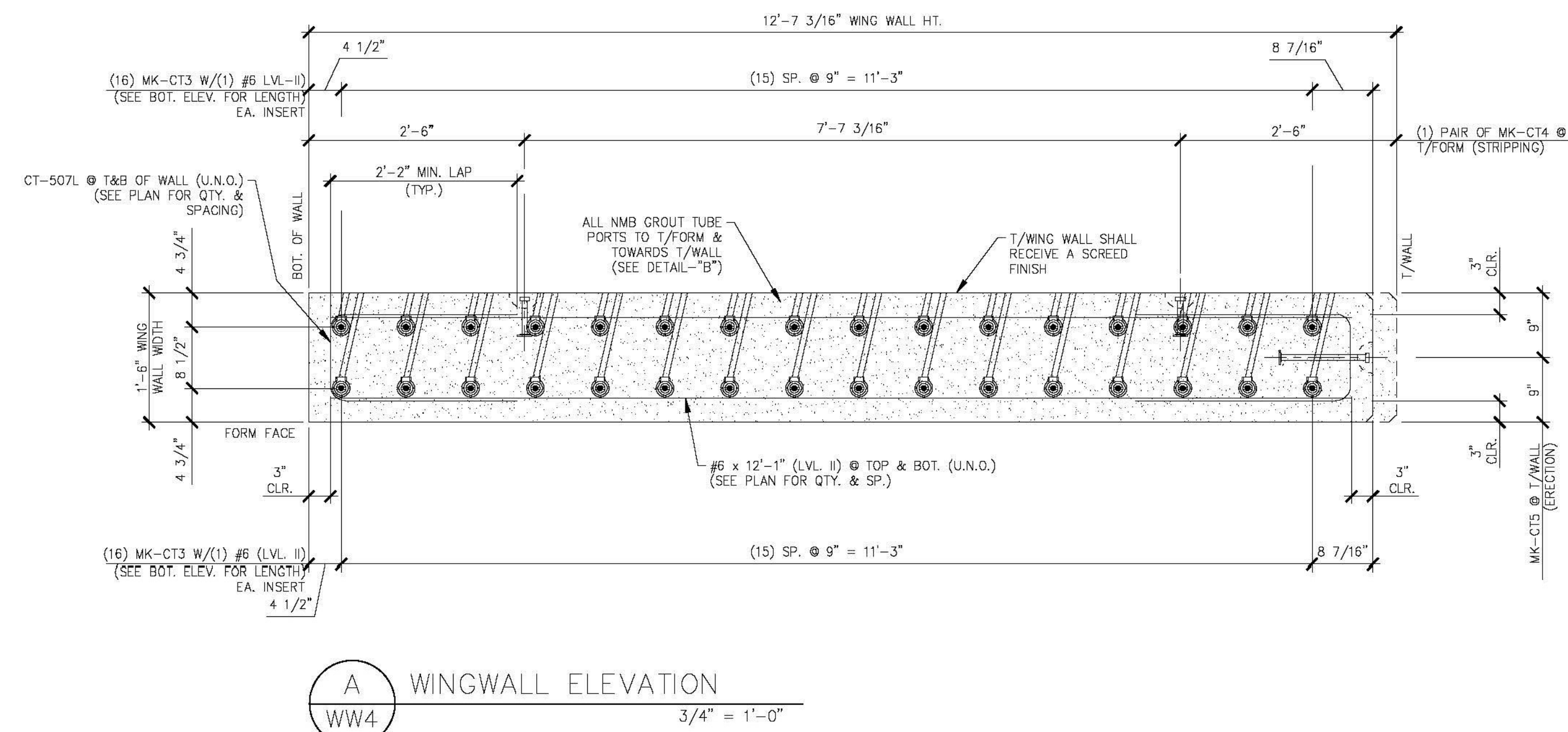


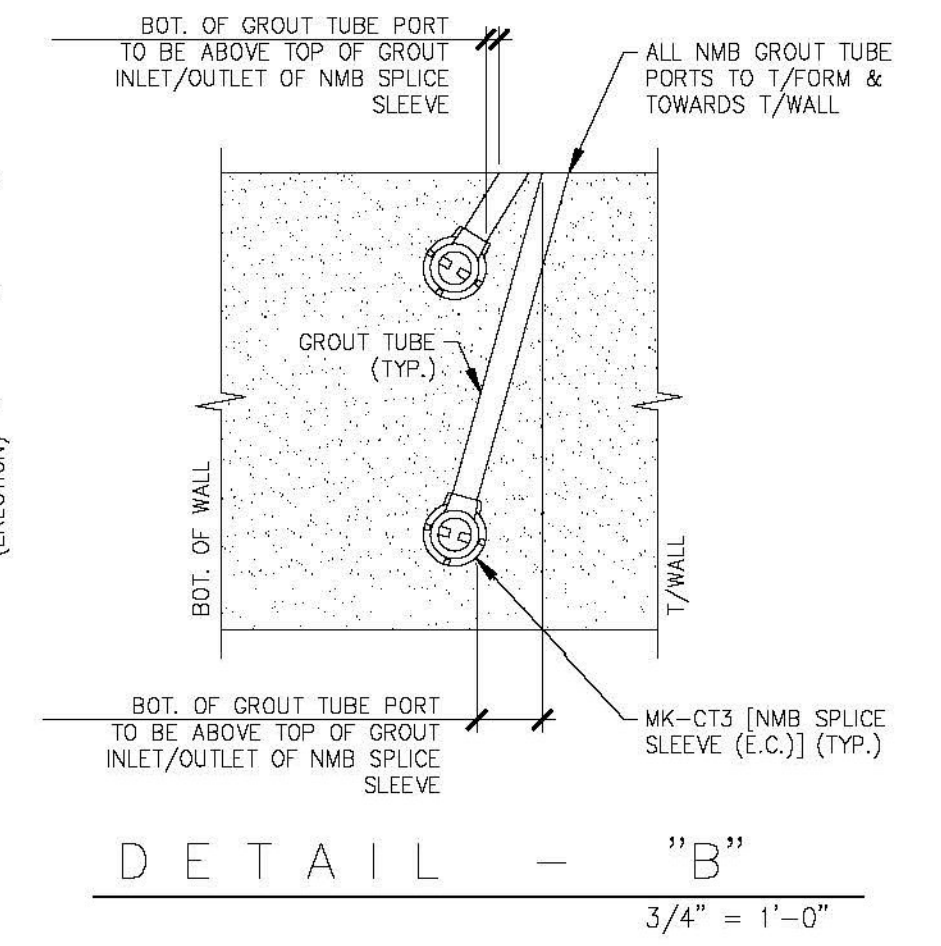
1 PLAN VIEW IN FORM
WW4
1/2" = 1'-0"



WING WALL BOTTOM ELEVATION
1/2" = 1'-0"



A WINGWALL ELEVATION
WW4
3/4" = 1'-0"



DETAIL - "B"
3/4" = 1'-0"

SHOP NOTES:
1. ALL EDGES OF WING WALLS, FORM FACE & T/WALL FACE, SHALL RECEIVE A 1" CHAMFER (UNLESS NOTED OTHERWISE)
2. ENDS OF CUT BARS SHALL BE COATED WITH TOUGH UP PRODUCT SUPPLIED BY THE REBAR MANUFACTURER.

SHOP NOTE:
f_c = 5,000 PSI
f_{ci} = 3,500 PSI
MIX: #445MSCC

MARK:	CT-WW4	QTY.:	1	WT.:	13.59 T	VOL.:	6.71 cy
MATERIAL LIST / WINGWALL							
ITEM	MARK	DESCRIPTION	QTY.				
1	CT-507L	#5 BENT BAR (LEVEL II, DUAL COATED)	20				
2	CT-508L	#5 BENT BAR (LEVEL II, DUAL COATED)	2				
3							
4		#5 x 11'-10" (LEVEL II, DUAL COATED)	2				
5		#6 x 12'-1" (LEVEL II, DUAL COATED)	24				
6		#6 x 9'-4" (LEVEL II, DUAL COATED)	1				
7		#6 x 9'-1" (LEVEL II, DUAL COATED)	1				
8		#6 x 9'-0" (LEVEL II, DUAL COATED)	16				
9		#6 x 8'-9" (LEVEL II, DUAL COATED)	16				
10							
11							
12	MK-CT3	NMB SLEEVE BU-X(PG) (EPOXY COATED)	32				
13	MK-CT4	4T x 7 1/8" SWIFT LIFT LIFTER	4				
14	MK-CT5	BT x 13 3/8" SWIFT LIFT LIFTER	2				
15							

Vermont Agency of Transportation
RECEIVED
 ON: **May 26, 2015**
 and Checked for
CONFORMANCE
 BY: Jennifer Fitch DATE: 05/28/2015

SHOP DRAWING REVIEW

REVIEWED AS REQUIRED BY THE CONSTRUCTION CONTRACT DOCUMENTS AND APPROVED, BUT ONLY FOR CONFORMANCE TO THE DESIGN CONCEPT OF THE WORK, AND SUBJECT TO FURTHER LIMITATIONS AND REQUIREMENTS CONTAINED IN THE CONSTRUCTION CONTRACT DOCUMENTS.

REJECTED REVISE AND RESUBMIT FURNISH AS CORRECTED

CONNECTIONS OR COMMENTS MADE ON THE SHOP DRAWINGS DURING THIS REVIEW DO NOT RELIEVE CONTRACTOR FROM COMPLIANCE WITH REQUIREMENTS OF THE DRAWINGS AND SPECIFICATIONS. THIS CHECK IS ONLY FOR REVIEW OF GENERAL CONFORMANCE WITH THE DESIGN CONCEPT OF THE PROJECT AND GENERAL COMPLIANCE WITH THE INFORMATION GIVEN IN THE CONTRACT DOCUMENTS. THE CONTRACTOR IS RESPONSIBLE FOR CONFIRMING AND CORRECTING ALL QUANTITIES AND DIMENSIONS, SELECTING FABRICATION PROCESSES AND TECHNIQUES OF CONSTRUCTION, COORDINATING HIS WORK WITH THAT OF ALL OTHER TRADES, AND PERFORMING HIS WORK IN A SAFE AND SATISFACTORY MANNER.

40 IDX Drive
 Building 300, Suite 200
 South Burlington, VT 05403
 802.497.6100

Job Number: 57632.00
 Reviewed By: E.F. LAWES
 Date: May 27, 2015

J.P. CARRARA & SONS INC.
 Precast & Prestress Manufacturer
 2464 CASE STR., MIDDLEBURY, VERMONT 05753 Phone: (802)388-6361 Fax: (802)388-9610

SCHULTZ CONSTRUCTION
 CONTRACTOR
 BALLSTON SPA, NY

STATE OF VERMONT AGENCY OF TRANSPORTATION
 COUNTY OF RUTLAND

TOWN OF CASTLETON
 VT ROUTE 30 (RURAL MINOR ARTERIAL)
 BRIDGE NO.: 93 PROJECT NO.: BRF 015-2(10)

DATE: MAY 06, 2015
 SCALE: NOTED
 CHKD: R.M. DFTM: PSS
 JOB NO: 23456-015

PRECAST WINGWALL DETAILS "CT-WW4" DWG. NO: WW4