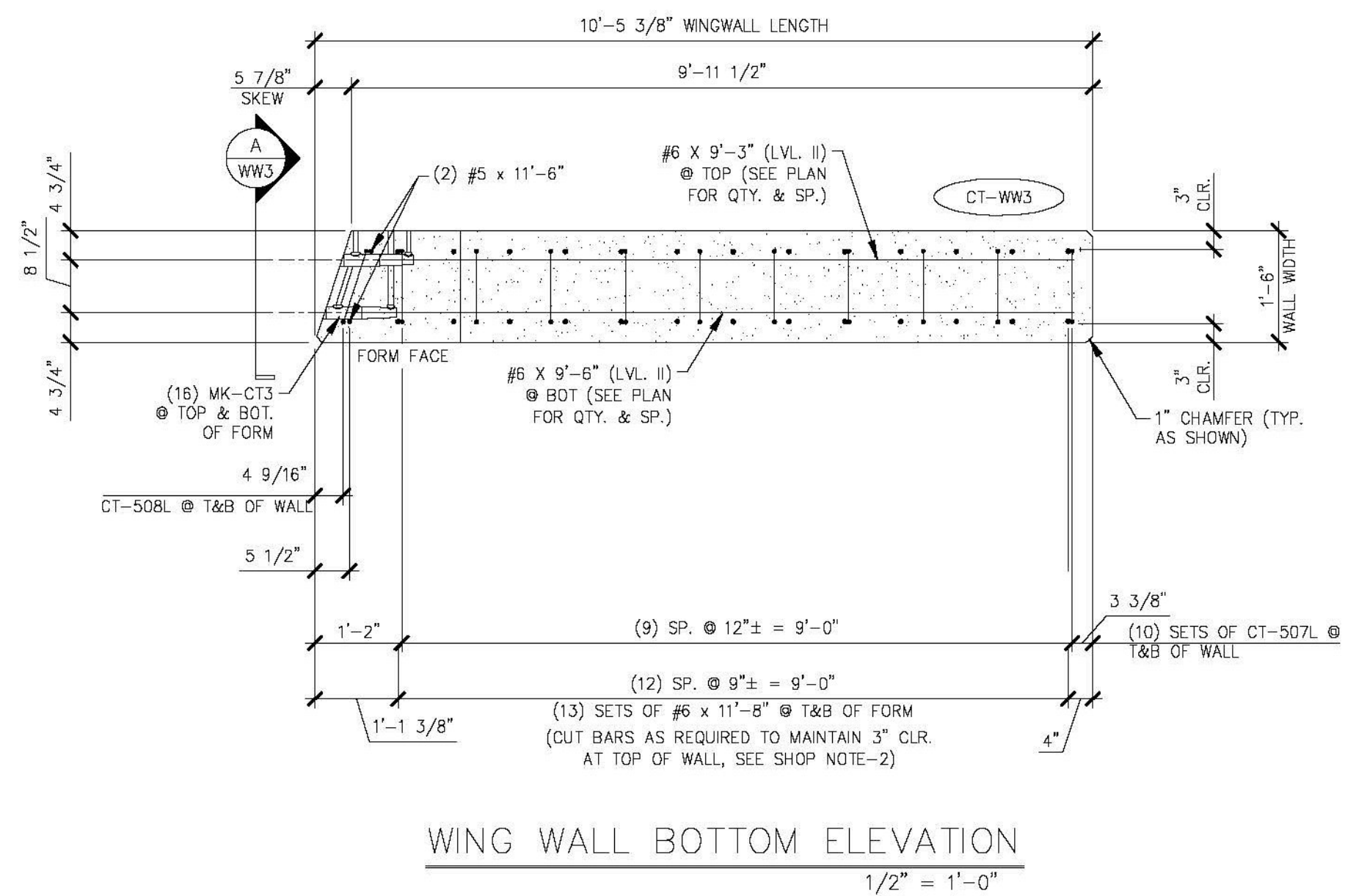


SHOP NOTES:
 1. ALL EDGES OF WING WALLS, FORM FACE & T/WALL FACE, SHALL RECEIVE A 1\"/>

SHOP NOTE:
 $f_c = 5,000$ PSI
 $f_{ci} = 3,500$ PSI
 MIX: #445MSCC

MARK:	CT-WW3	QTY.:	1	WT.:	13.95 T	VOL.:	6.89 cy
MATERIAL LIST / WINGWALL							
ITEM	MARK	DESCRIPTION	QTY.				
1	CT-507L	#5 BENT BAR (LEVEL II, DUAL COATED)	20				
2	CT-508L	#5 BENT BAR (LEVEL II, DUAL COATED)	2				
3		#5 x 11'-6\"/>					

Vermont Agency of Transportation
RECEIVED
 ON: **May 26, 2015**
 and Checked for
CONFORMANCE
 BY: Jennifer Fitch DATE: 05/28/2015



SHOP DRAWING REVIEW

REVIEWED AS REQUIRED BY THE CONSTRUCTION CONTRACT DOCUMENTS AND APPROVED, BUT ONLY FOR CONFORMANCE TO THE DESIGN CONCEPT OF THE WORK, AND SUBJECT TO FURTHER LIMITATIONS AND REQUIREMENTS CONTAINED IN THE CONSTRUCTION CONTRACT DOCUMENTS.

SUBJECT REVISE AND RESUBMIT FURNISH AS CORRECTED

CORRECTIONS OR COMMENTS MADE ON THE SHOP DRAWINGS DURING THIS REVIEW DO NOT RELIEVE CONTRACTOR FROM COMPLIANCE WITH REQUIREMENTS OF THE BIDDING AND SPECIFICATIONS. THIS CHECK IS ONLY FOR REVIEW OF GENERAL CONFORMANCE WITH THE DESIGN CONCEPT OF THE PROJECT AND GENERAL COMPLIANCE WITH THE INFORMATION GIVEN IN THE CONTRACT DOCUMENTS. THE CONTRACTOR IS RESPONSIBLE FOR CONFIRMING AND CORRELATING ALL QUANTITIES AND DIMENSIONS, SELECTING FABRICATION PROCESSES AND TECHNIQUES OF CONSTRUCTION, COORDINATING HIS WORK WITH THAT OF ALL OTHER TRADES, AND PERFORMING HIS WORK IN A SAFE AND SATISFACTORY MANNER.

40 DIX Drive Building 100, Suite 200 South Burlington, VT 05403 802.497.6100	Job Number: 57632.00 Reviewed By: E.F. LAMES Date: May 27, 2015
---	---

J.P. CARRARA & SONS INC. Precast & Prestress Manufacturer 2464 GAGE ST., MIDDLEBURY, VERMONT 05753 Phone:(802)388-6361 Fax:(802)388-9010		SCHULTZ CONSTRUCTION CONTRACTOR BALLSTON SPA, NY	
STATE OF VERMONT AGENCY OF TRANSPORTATION COUNTY OF RUTLAND		DATE: MAY 06, 2015	
TOWN OF CASTLETON VT ROUTE 30 (RURAL MINOR ARTERIAL) BRIDGE NO.: 93 PROJECT NO.: BRF 015-2(10)		SCALE: NOTED	CHKD: R.M. DFTM: PSS
PRECAST WINGWALL DETAILS "CT-WW3"		JOB NO: 23456-015	DWG. NO: WW3