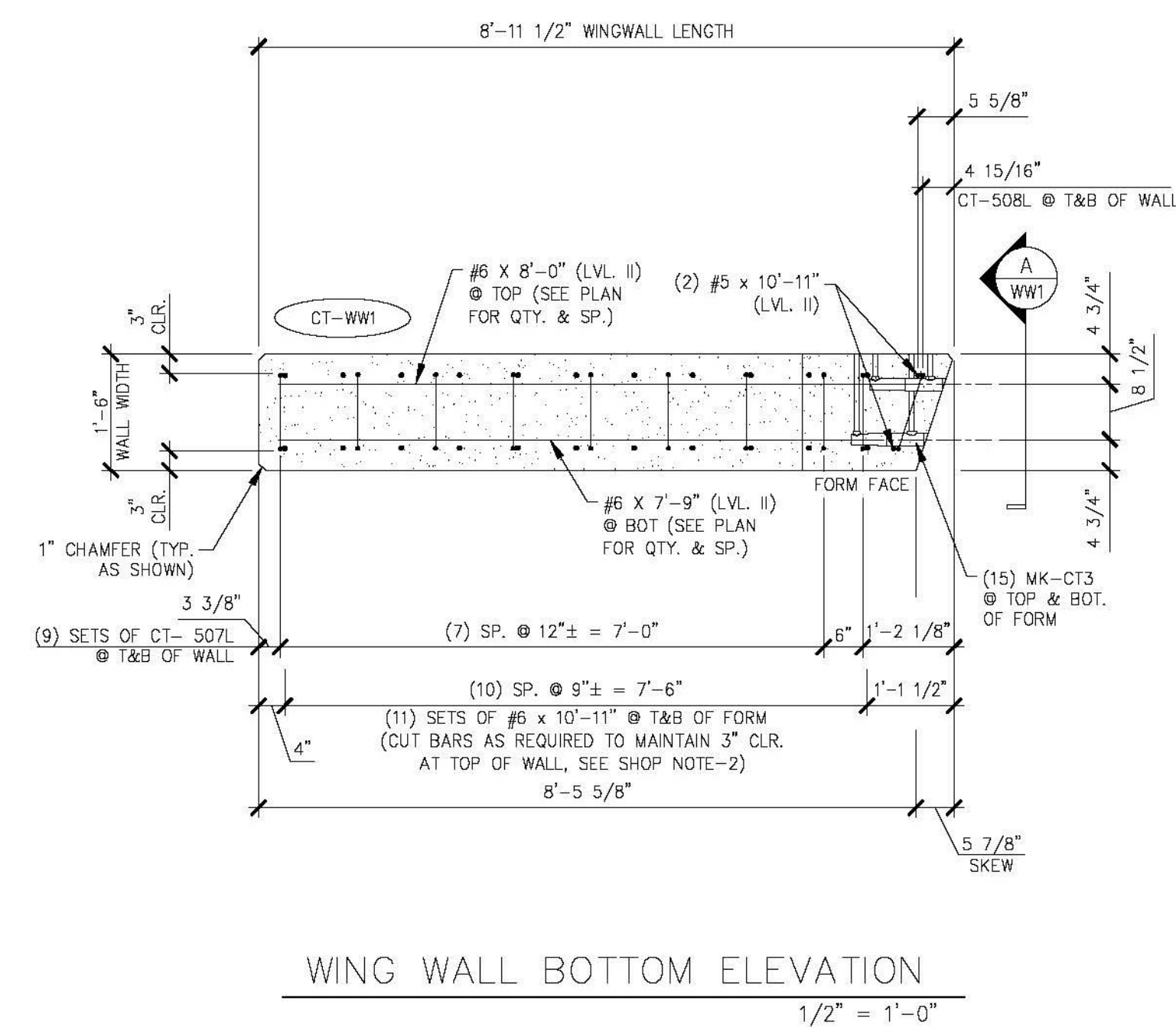
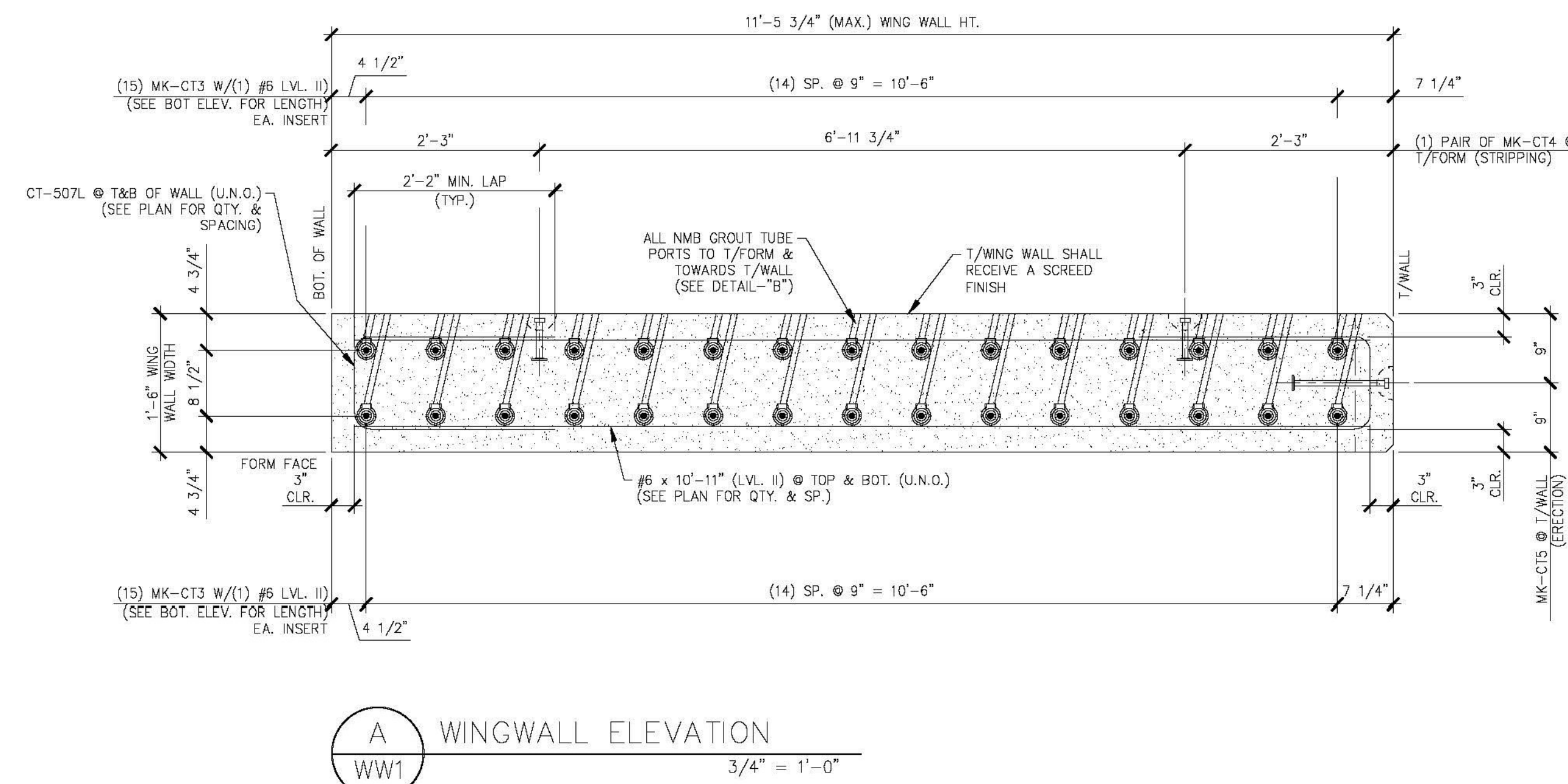


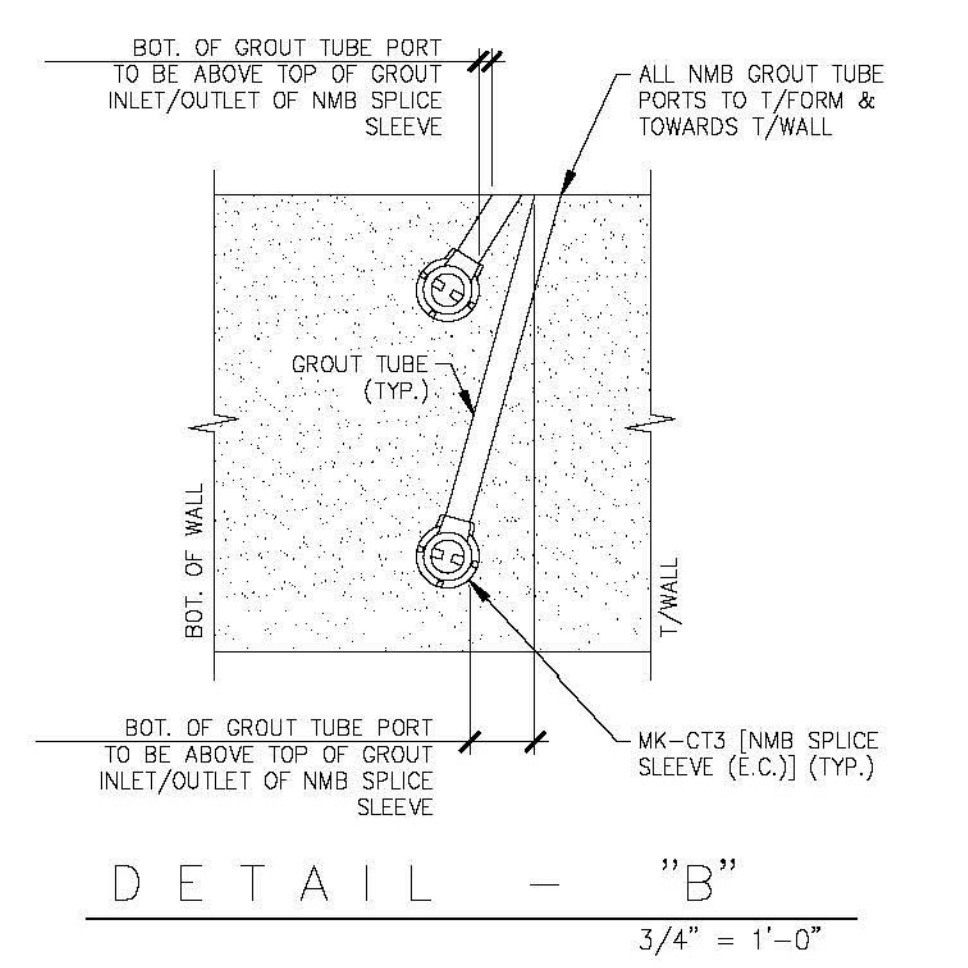
1 PLAN VIEW IN FORM  
WW1  
1/2" = 1'-0"



WING WALL BOTTOM ELEVATION  
WW1  
1/2" = 1'-0"



A WINGWALL ELEVATION  
WW1  
3/4" = 1'-0"



DETAIL - "B"  
3/4" = 1'-0"

SHOP NOTES:  
1. ALL EDGES OF WING WALLS, FORM FACE & T/WALL FACE, SHALL RECEIVE A 1" CHAMFER (UNLESS NOTED OTHERWISE)  
2. ENDS OF CUT BARS SHALL BE COATED WITH TOUCH UP PRODUCT SUPPLIED BY THE REBAR MANUFACTURER.

SHOP NOTE:  
f<sub>c</sub> = 5,000 PSI  
f<sub>ci</sub> = 3,500 PSI  
MIX: #445MSCC

MARK:	CT-WW1	QTY.:	1	WT.:	10.98 T	VOL.:	5.42 cy
MATERIAL LIST / WINGWALL							
ITEM	MARK	DESCRIPTION	QTY.				
1	CT-507L	#5 BENT BAR (LEVEL II, DUAL COATED)	18				
2	CT-508L	#5 BENT BAR (LEVEL II, DUAL COATED)	2				
3	CT-603L	#5 BENT BAR (LEVEL II, DUAL COATED)	2				
4	CT-604L	#5 BENT BAR (LEVEL II, DUAL COATED)	2				
5		#5 x 10'-11" (LEVEL II, DUAL COATED)	2				
6		#6 x 10'-11" (LEVEL II, DUAL COATED)	22				
7		#6 x 8'-0" (LEVEL II, DUAL COATED)	14				
8		#6 x 7'-9" (LEVEL II, DUAL COATED)	14				
9							
10							
11							
12	MK-CT3	NMB SPLICING SLEEVE BU-X(PG) (EPOXY COATED)	30				
13	MK-CT4	4T x 7 1/8" SWIFT LIFT LIFTER	4				
14	MK-CT5	8T x 13 3/8" SWIFT LIFT LIFTER	2				
15							

Vermont Agency of Transportation  
**RECEIVED**  
ON: **May 26, 2015**  
and Checked for  
**CONFORMANCE**  
BY: Jennifer Fitch DATE: 05/28/2015

**SHOP DRAWING REVIEW**

REVIEWED AS REQUIRED BY THE CONSTRUCTION CONTRACT DOCUMENTS AND APPROVED, BUT ONLY FOR CONFORMANCE TO THE DESIGN CONCEPT OF THE WORK, AND SUBJECT TO FURTHER LIMITATIONS AND REQUIREMENTS CONTAINED IN THE CONSTRUCTION CONTRACT DOCUMENTS.

SUBJECT  REVISE AND RESUBMIT  FURNISH AS CORRECTED

CONTRACTORS OR COMMENTORS MADE ON THE SHOP DRAWINGS DURING THIS REVIEW DO NOT RELIEVE CONTRACTOR FROM COMPLIANCE WITH REQUIREMENTS OF THE BIDDING AND SPECIFICATIONS. THIS CHECK IS ONLY FOR REVIEW OF GENERAL CONFORMANCE WITH THE DESIGN CONCEPT OF THE PROJECT AND GENERAL COMPLIANCE WITH THE INFORMATION GIVEN IN THE CONTRACT DOCUMENTS. THE CONTRACTOR IS RESPONSIBLE FOR CONFIRMING AND CORRECTING ALL QUANTITIES AND DIMENSIONS, SELECTING FABRICATION PROCESSES AND TECHNIQUES OF CONSTRUCTION, COORDINATING HIS WORK WITH THAT OF ALL OTHER TRADES, AND PERFORMING HIS WORK IN A SAFE AND SATISFACTORY MANNER.

40 IX Drive  
Building 100, Suite 200  
South Burlington, VT 05403  
802.487.6100

Job Number: 57632.00  
Reviewed By: E.F. LAMES  
Date: May 27, 2015

**J.P. CARRARA & SONS INC.**  
Precast & Prestress Manufacturer  
2464 GISE STR., MIDDLEBURY, VERMONT 05753 Phone: (802)388-6361 Fax: (802)388-9010

**SCHULTZ CONSTRUCTION**  
CONTRACTOR  
BALLSTON SPA, NY

STATE OF VERMONT AGENCY OF TRANSPORTATION  
COUNTY OF RUTLAND

TOWN OF CASTLETON  
VT ROUTE 30 (RURAL MINOR ARTERIAL)  
BRIDGE NO.: 93 PROJECT NO.: BRP 015-2(10)

DATE: MAY 06, 2015  
SCALE: NOTED  
CHKD: R.M. DFTM: PSS  
JOB NO: 23456-015

PRECAST WINGWALL DETAILS "CT-WW1" DWG. NO: WW1