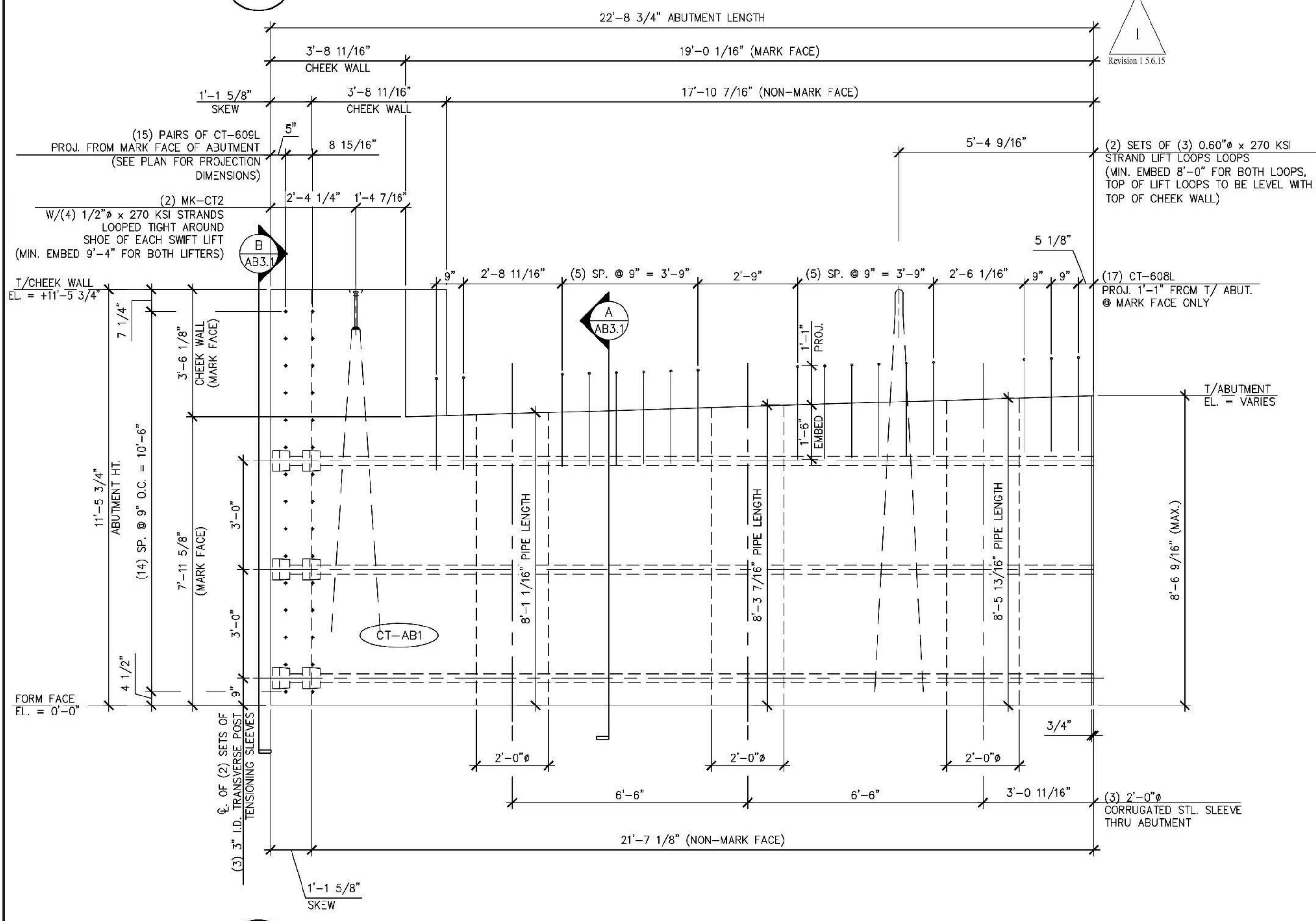
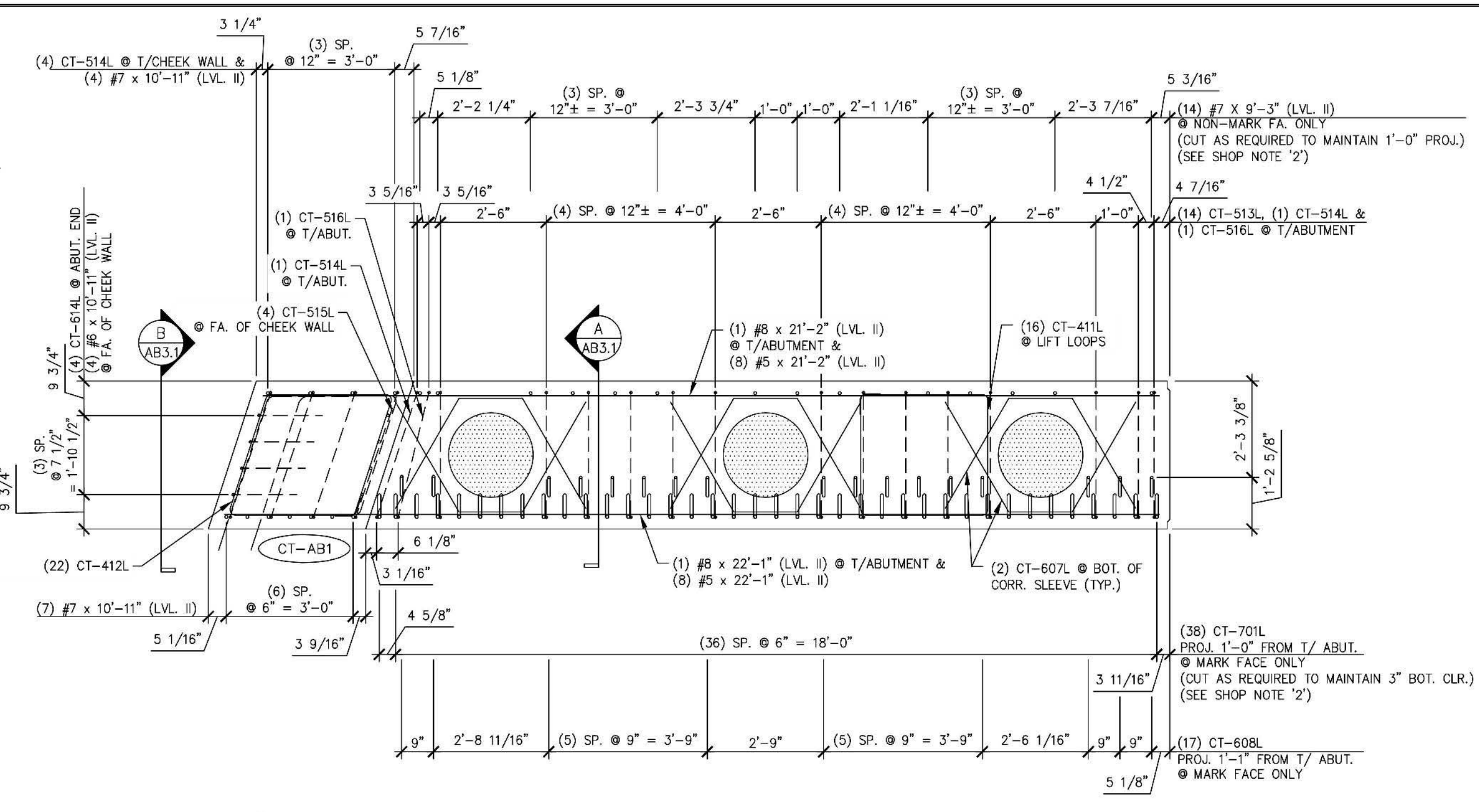


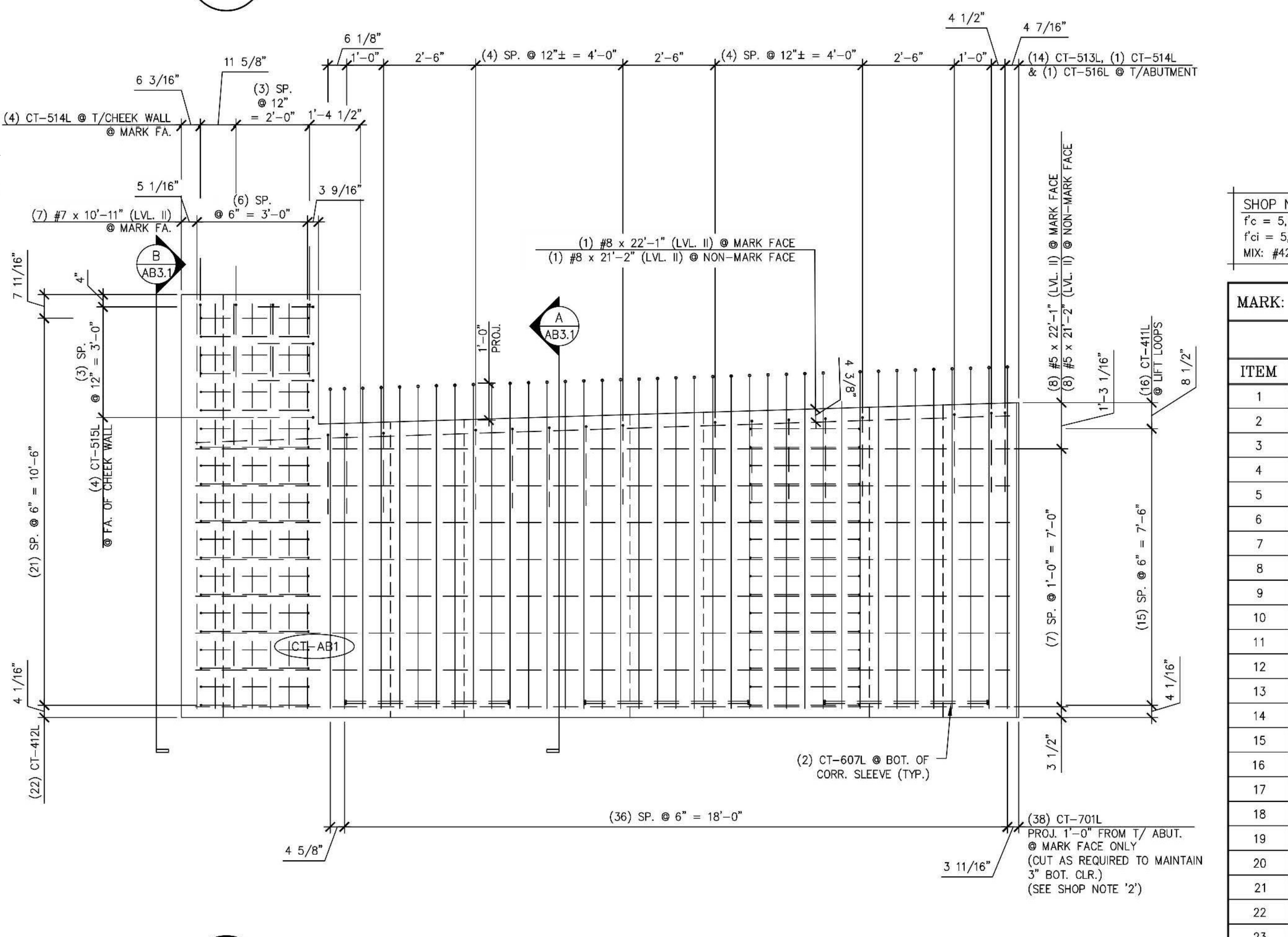
1 ABUTMENT DIMENSIONAL PLAN VIEW IN FORM  
AB3  
3/8" = 1'-0"



2 ABUTMENT DIMENSIONAL MARK FACE ELEVATION  
AB3  
(ONLY CT-608L PROJECTING BARS SHOWN. ALL OTHER PROJECTING BARS ARE NOT SHOWN HERE FOR CLARITY. SEE DETAILS "A/AB3.1" AND "4/AB3" FOR ADDITIONAL PROJECTING BARS)  
3/8" = 1'-0"



3 ABUTMENT REINFORCING PLAN VIEW IN FORM  
AB3  
3/8" = 1'-0"



4 ABUTMENT REINFORCING MARK FACE ELEVATION  
AB3  
(ONLY #7 PROJECTING BARS (LVL. II) SHOWN. ALL OTHER PROJECTING BARS ARE NOT SHOWN HERE FOR CLARITY. SEE DETAILS "A/AB3.1" AND "2/AB3" FOR ADDITIONAL PROJECTING BARS)  
3/8" = 1'-0"

Vermont Agency of Transportation  
**RECEIVED**  
ON: **May 26, 2015**  
and Checked for  
**CONFORMANCE**  
BY: Jennifer Fitch DATE: 05/28/2015

- SHOP NOTES:
- ALL EDGES OF ABUTMENT SHALL RECEIVE A 1" CHAMFER (U.N.O.)
  - ENDS OF CUT BARS SHALL BE COATED WITH TOUCH UP PRODUCT SUPPLIED BY THE REBAR MANUFACTURER.

SHOP NOTE:  
f<sub>c</sub> = 5,000 PSI  
f<sub>c</sub> = 5,000 PSI  
MIX: #425M-NO DCL

MARK:	CT-AB1	QTY.:	1	WT.:	45.34 T	VOL.:	22.39 cy
MATERIAL LIST / ABUTMENT							
ITEM	MARK	DESCRIPTION	QTY.				
1	CT-701L	#7 BENT BAR (LEVEL II, DUAL COATED)	38				
2	CT-607L	#6 BENT BAR (LEVEL II, DUAL COATED)	6				
3	CT-608L	#6 BENT BAR (LEVEL II, DUAL COATED)	17				
4	CT-609L	#6 BENT BAR (LEVEL II, DUAL COATED)	30				
5	CT-614L	#6 BENT BAR (LEVEL II, DUAL COATED)	4				
6	CT-513L	#5 BENT BAR (LEVEL II, DUAL COATED)	14				
7	CT-514L	#5 BENT BAR (LEVEL II, DUAL COATED)	5				
8	CT-515L	#5 BENT BAR (LEVEL II, DUAL COATED)	4				
9	CT-516L	#5 BENT BAR (LEVEL II, DUAL COATED)	1				
10	CT-411L	#4 BENT BAR (LEVEL II, DUAL COATED)	16				
11	CT-412L	#4 BENT BAR (LEVEL II, DUAL COATED)	22				
12		#8 x 22'-1" (LEVEL II, DUAL COATED)	1				
13		#8 x 21'-2" (LEVEL II, DUAL COATED)	1				
14		#7 x 10'-11" (LEVEL II, DUAL COATED)	11				
15		#7 x 9'-3" (LEVEL II, DUAL COATED)	14				
16		#6 x 10'-11" (LEVEL II, DUAL COATED)	4				
17		#5 x 22'-1" (LEVEL II, DUAL COATED)	8				
18		#5 x 21'-2" (LEVEL II, DUAL COATED)	8				
19		2'-0" x 8'-5 13/16" CORRUGATED STEEL PIPE (GALV.)	1				
20		2'-0" x 8'-3 7/16" CORRUGATED STEEL PIPE (GALV.)	1				
21		2'-0" x 8'-1 1/16" CORRUGATED STEEL PIPE (GALV.)	1				
22							
23	MK-CT2	20T x 19 3/4" SWIFT LIFT LIFTER	2				
24		SET OF (3) 0.60" STRAND LIFTING LOOPS	2				
25		SET OF (4) 1/2" STRANDS	2				
26							

SHOP DRAWING REVIEW

REVIEWED AS REQUIRED BY THE CONSTRUCTION CONTRACT DOCUMENTS AND APPROVED, BUT ONLY FOR CONFORMANCE TO THE DESIGN CONCEPT OF THE WORK, AND SUBJECT TO FURTHER LIMITATIONS AND REQUIREMENTS CONTAINED IN THE CONSTRUCTION CONTRACT DOCUMENTS.

REJECTED    
  REVISE AND RESUBMIT    
  FURNISH AS CORRECTED

CORRECTIONS OR COMMENTS MADE ON THE SHOP DRAWINGS DURING THIS REVIEW DO NOT RELIEVE CONTRACTOR FROM COMPLIANCE WITH REQUIREMENTS OF THE SPECIFICATIONS AND REQUIREMENTS. THIS CHECK IS ONLY FOR REVIEW OF GENERAL CONFORMANCE WITH THE DESIGN CONCEPT OF THE PROJECT AND GENERAL COMPLIANCE WITH THE INFORMATION GIVEN IN THE CONTRACT DOCUMENTS. THE CONTRACTOR IS RESPONSIBLE FOR CONFIRMING AND CORRELATING ALL QUANTITIES AND DIMENSIONS, SELECTING FABRICATION PROCESSES AND TECHNIQUES OF CONSTRUCTION, CONSIDERING HIS WORK WITH THAT OF ALL OTHER TRADES, AND PERFORMING HIS WORK IN A SAFE AND SATISFACTORY MANNER.

40 IDX Drive  
 Building 100, Suite 200  
 South Burlington, VT 05403  
 802-497-6100

Job Number: 57632.00  
 Reviewed By: E.F. LAMES  
 Date: May 27, 2015

<b>J.P. CARRARA &amp; SONS INC.</b> Precast & Prestress Manufacturer 244 GSE STR., MIDDLEBURY, VERMONT 05753 Phone: (802)388-6361 Fax: (802)388-9010		<b>SCHULTZ CONSTRUCTION</b> CONTRACTOR BALLSTON SPA, NY	
STATE OF VERMONT AGENCY OF TRANSPORTATION COUNTY OF RUTLAND		DATE: MAY 06, 2015 SCALE: NOTED	
TOWN OF CASTLETON VT ROUTE 30 (RURAL MINOR ARTERIAL) BRIDGE NO.: 93 PROJECT NO.: BRF 015-2(10)		CHKD: R.M. DFTM: PSS JOB NO: 23456-015	
PRECAST ABUTMENT DETAILS "CT-AB1"		DWG. NO: AB3	