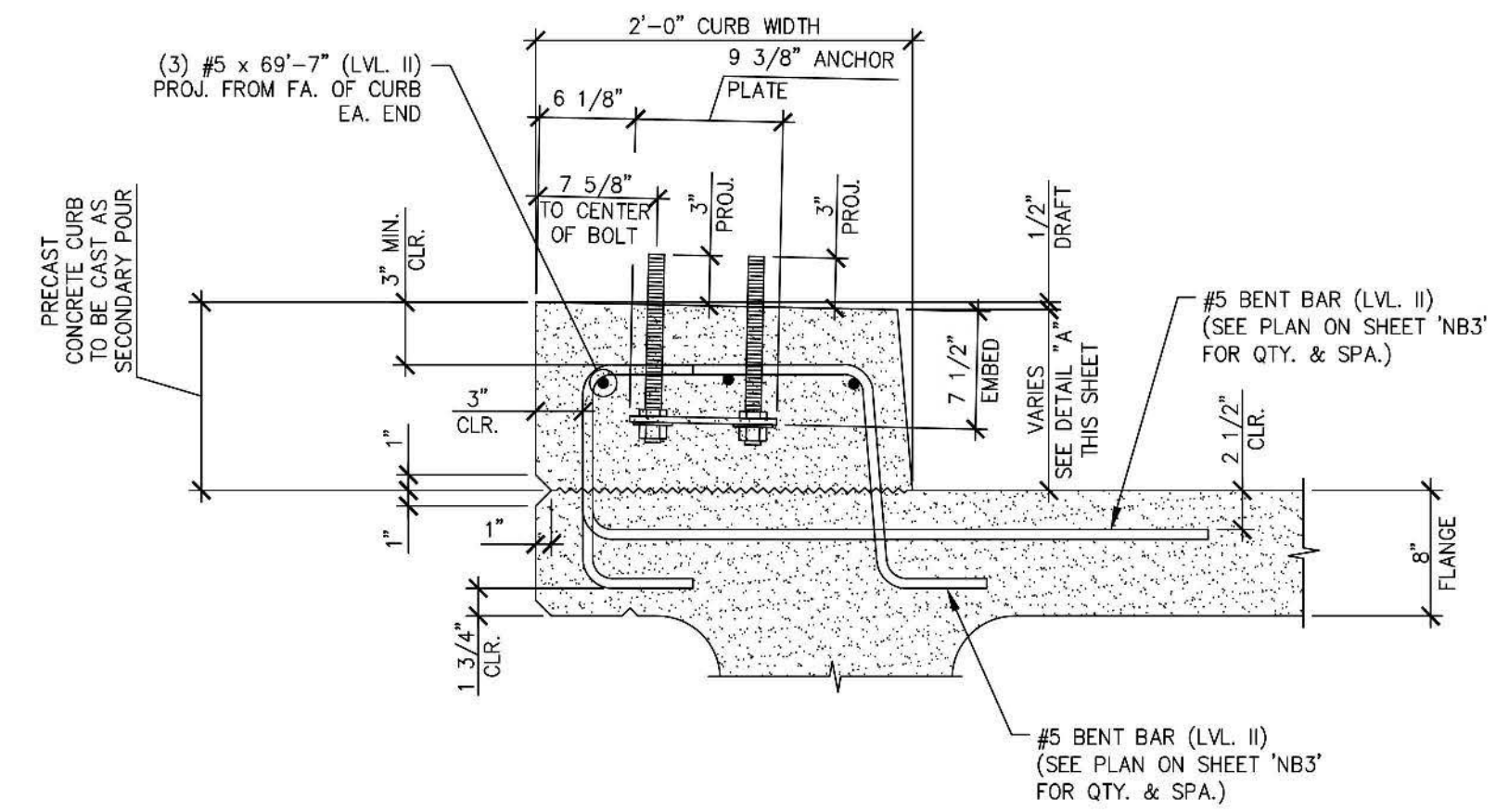
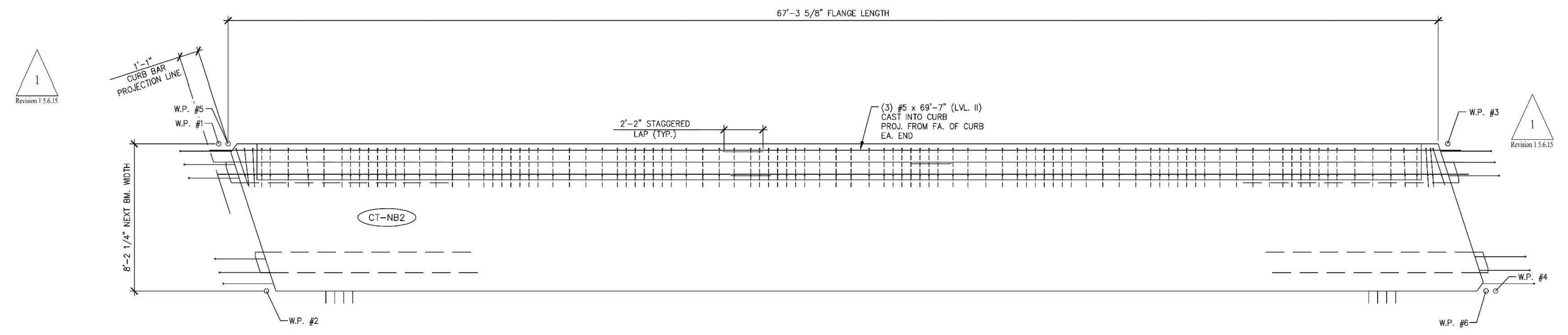


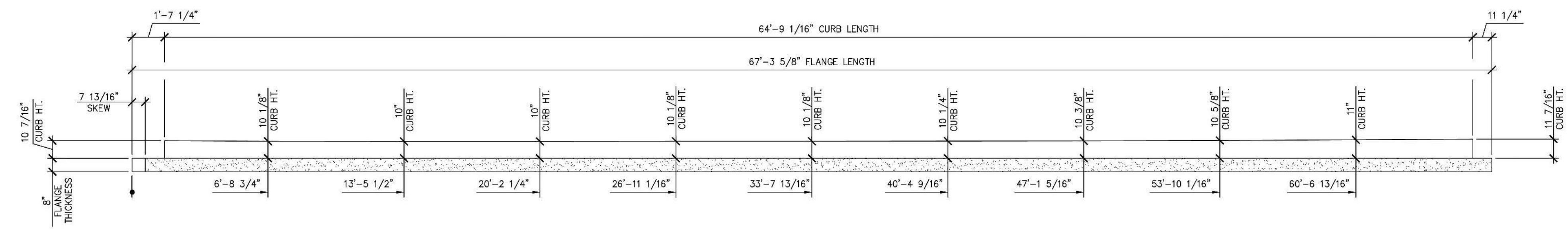
1 DIMENSIONAL PLAN VIEW FOR SECONDARY POUR
 NB3.2 1/4" = 1'-0"



B CURB & GUARD RAIL ANCHOR PLATE SECTION
 NB3.2 TYP. BEAM REINF. NOT SHOWN FOR CLARITY 1" = 1'-0"



2 REINFORCING PLAN VIEW FOR SECONDARY POUR
 NB3.2 1/4" = 1'-0"



A CURB HEIGHT DETAIL
 NB3.2 1/4" = 1'-0"

Vermont Agency of Transportation
RECEIVED
 ON: **May 26, 2015**
 and Checked for
CONFORMANCE
 BY: Jennifer Fitch DATE: 05/28/2015

SHOP DRAWING REVIEW

REVIEWED AS REQUIRED BY THE CONSTRUCTION CONTRACT DOCUMENTS AND APPROVED, BUT ONLY FOR CONFORMANCE TO THE DESIGN CONCEPT OF THE WORK, AND SUBJECT TO FURTHER LIMITATIONS AND REQUIREMENTS CONTAINED IN THE CONSTRUCTION CONTRACT DOCUMENTS.

REJECTED REVISE AND RESUBMIT FURNISH AS CORRECTED

CORRECTIONS OR COMMENTS MADE ON THE SHOP DRAWINGS DURING THIS REVIEW DO NOT RELIEVE CONTRACTOR FROM COMPLIANCE WITH REQUIREMENTS OF THE DRAWINGS AND SPECIFICATIONS. THIS CHECK IS ONLY FOR REVIEW OR GENERAL CONFORMANCE WITH THE DESIGN CONCEPT OF THE PROJECT AND GENERAL COMPLIANCE WITH THE INFORMATION GIVEN IN THE CONTRACT DOCUMENTS. THE CONTRACTOR IS RESPONSIBLE FOR CONFIRMING AND CORRELATING ALL QUANTITIES AND DIMENSIONS, SELECTING FABRICATION PROCESSES AND TECHNIQUES OF CONSTRUCTION; COORDINATING HIS WORK WITH THAT OF ALL OTHER TRADES; AND PERFORMING HIS WORK IN A SAFE AND SATISFACTORY MANNER.

43 IDX Drive
 Building 100, Suite 200
 South Burlington, VT 05403
 802.497.6100

Job Number: 57832.00
 Reviewed By: E.F. LAWES
 Date: May 27, 2015

APPROVAL STAMP:	J.P. CARRARA & SONS INC. Precast & Prestress Manufacturer 2444 GISE STR., MIDDLEBURY, VERMONT 05753 Phone:(802)388-6361 Fax:(802)388-9010	SCHULTZ CONSTRUCTION CONTRACTOR BALLSTON SPA, NY
	STATE OF VERMONT AGENCY OF TRANSPORTATION COUNTY OF RUTLAND	DATE: MAY 06, 2015 SCALE: NOTED
	TOWN OF CASTLETON VT ROUTE 30 (RURAL MINOR ARTERIAL) BRIDGE NO.: 93 PROJECT NO.: BRF 015-2(10)	CHKD: R.M. DFTM: PSS JOB NO: 23456-015
PRESTRESSED NEXT BEAM DETAILS "CT-NB2"		DWG. NO: NB3.2

2
 Revision 2.5.12.15
 1
 Revision 1.5.6.15