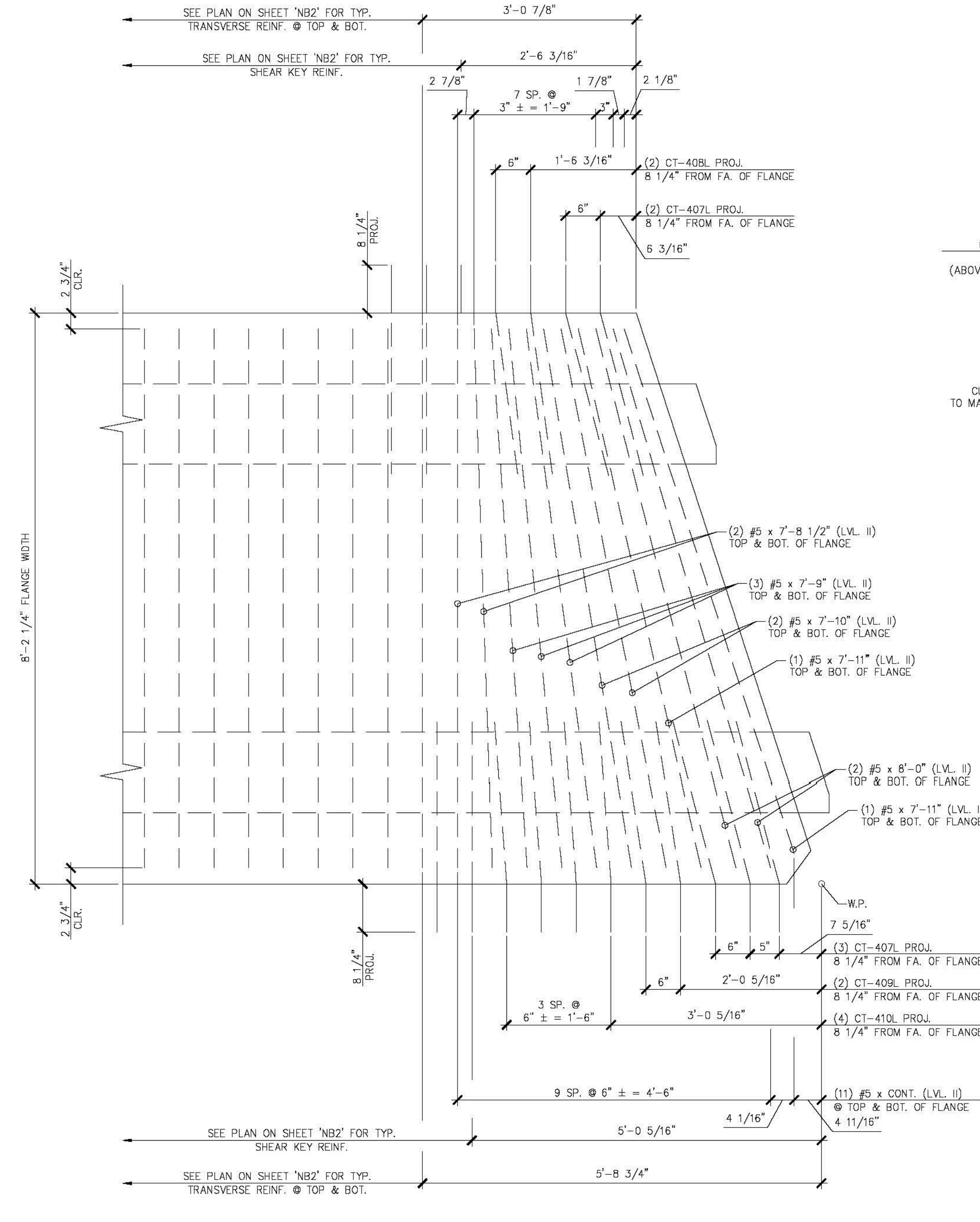
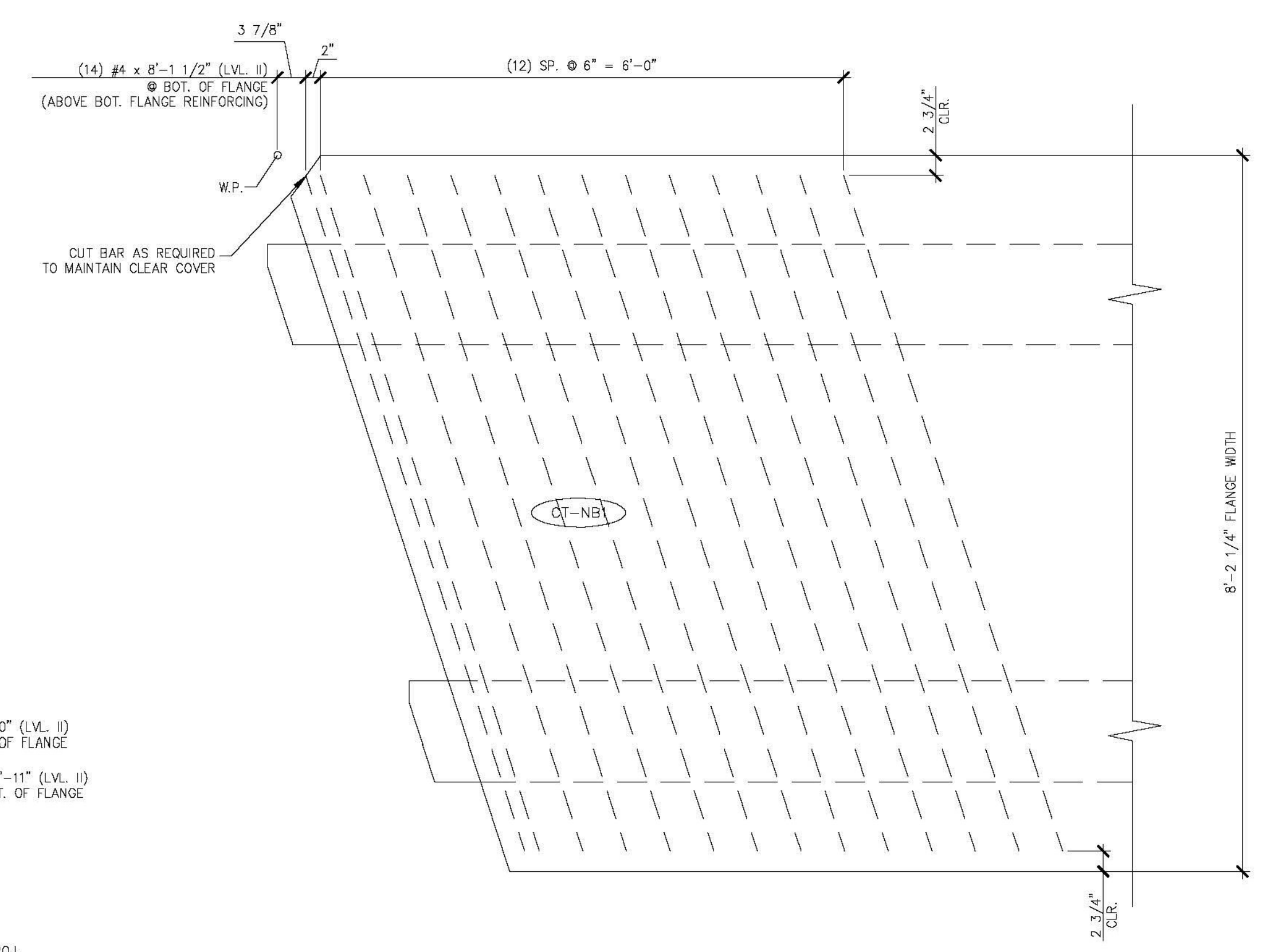


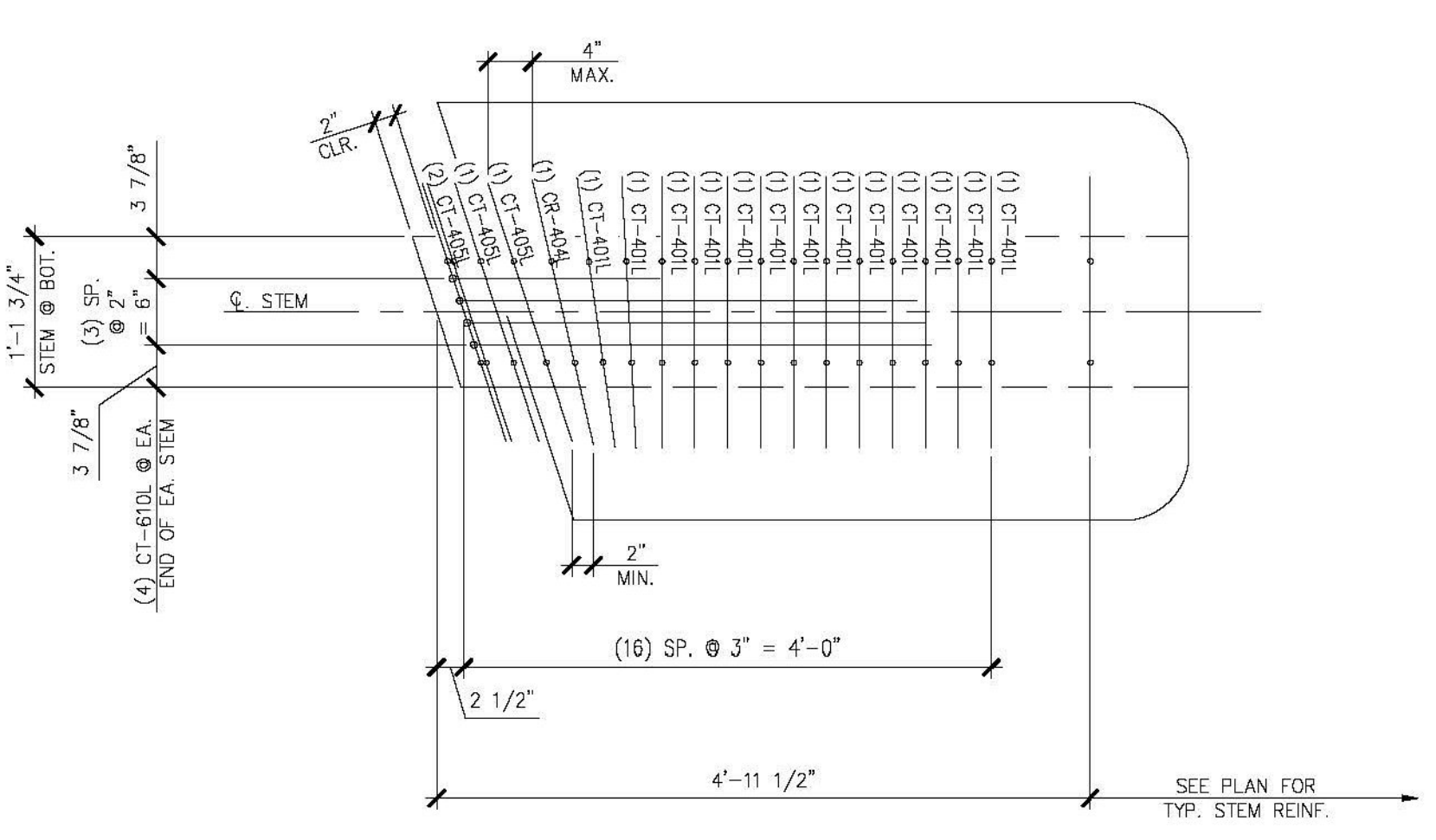
**A** BEAM END TRANSVERSE/SHEAR KEY REINFORCING  
NB2.1  $3/4" = 1'-0"$



**B** BEAM END TRANSVERSE/SHEAR KEY REINFORCING  
NB2.1  $3/4" = 1'-0"$



**C** ADDITIONAL TRANSVERSE REINFORCING  
NB2.1 AT BOTTOM OF FLANGE  $3/4" = 1'-0"$



**D** BEAM END STEM REINFORCING  
NB2.1  $3/4" = 1'-0"$

Vermont Agency of Transportation  
**RECEIVED**  
ON: **May 26, 2015**  
and Checked for  
**CONFORMANCE**  
BY: Jennifer Fitch DATE: 05/28/2015

**SHOP DRAWING REVIEW**

REVIEWED AS REQUIRED BY THE CONSTRUCTION CONTRACT DOCUMENTS AND APPROVED, BUT ONLY FOR CONFORMANCE TO THE DESIGN CONCEPT OF THE WORK, AND SUBJECT TO FURTHER LIMITATIONS AND REQUIREMENTS CONTAINED IN THE CONSTRUCTION CONTRACT DOCUMENTS.

REJECTED  REVISE AND RESUBMIT  FURNISH AS CORRECTED

CONTRACTOR'S COMMENTS MADE ON THE SHOP DRAWINGS DURING THIS REVIEW DO NOT RELIEVE CONTRACTOR FROM COMPLIANCE WITH REQUIREMENTS OF THE DRAWINGS AND SPECIFICATIONS. THIS CHECK IS ONLY FOR REVIEW OF GENERAL CONFORMANCE WITH THE DESIGN CONCEPT OF THE PROJECT AND GENERAL COMPLIANCE WITH THE INFORMATION GIVEN IN THE CONTRACT DOCUMENTS. THE CONTRACTOR IS RESPONSIBLE FOR: CONFIRMING AND CORRECTING ALL QUANTITIES AND DIMENSIONS; SELECTING FABRICATION PROCESSES AND TECHNOLOGIES OF CONSTRUCTION; COORDINATING HIS WORK WITH THAT OF ALL OTHER TRADES; AND PERFORMING HIS WORK IN A SAFE AND SATISFACTORY MANNER.

40 IDX Drive  
Building 100, Suite 200  
South Burlington, VT 05403  
802.497.6100

Job Number: 57632.00  
Reviewed By: E.F. LAMES  
Date: May 27, 2015

<b>J.P. CARRARA &amp; SONS INC.</b> Precast & Prestress Manufacturer 2464 CASE ST., MIDDLEBURY, VERMONT 05753 Phone:(802)388-6361 Fax:(802)388-9010		<b>SCHULTZ CONSTRUCTION</b> CONTRACTOR BALLSTON SPA, NY	
STATE OF VERMONT AGENCY OF TRANSPORTATION COUNTY OF RUTLAND		DATE: MAY 06, 2015 SCALE: NOTED	
TOWN OF CASTLETON VT ROUTE 30 (RURAL MINOR ARTERIAL) BRIDGE NO.: 93 PROJECT NO.: BRF 015-2(10)		CHKD: R.M.	DFTM: PSS
PRESTRESSED NEXT BEAM DETAILS "CT-NB1"		JOB NO: 23456-015 DWG. NO: NB2.1	