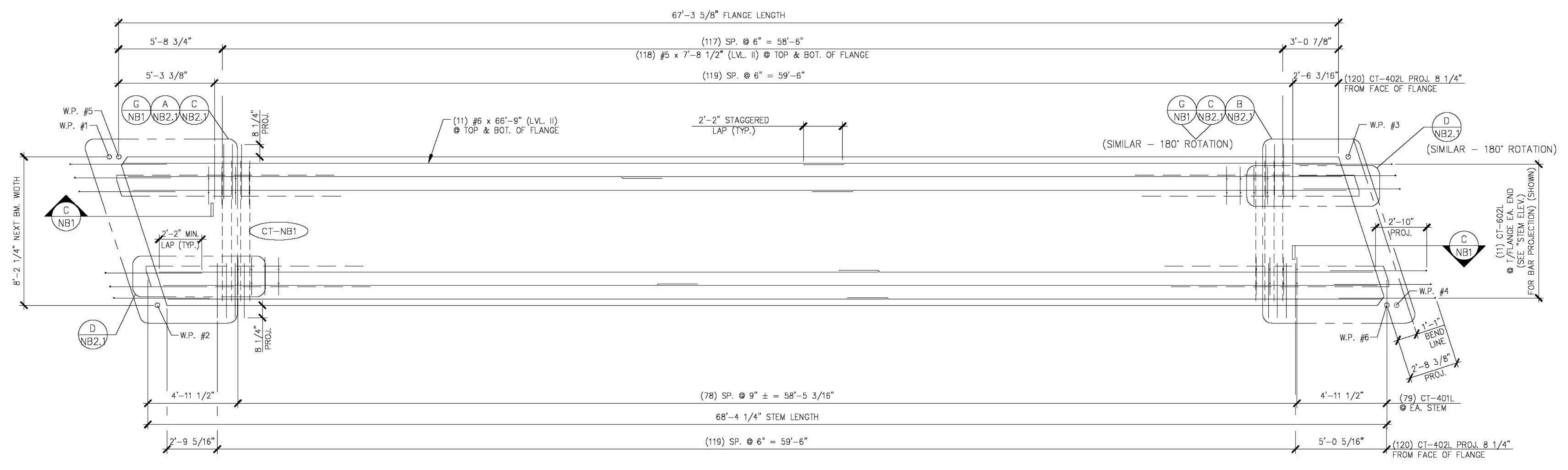
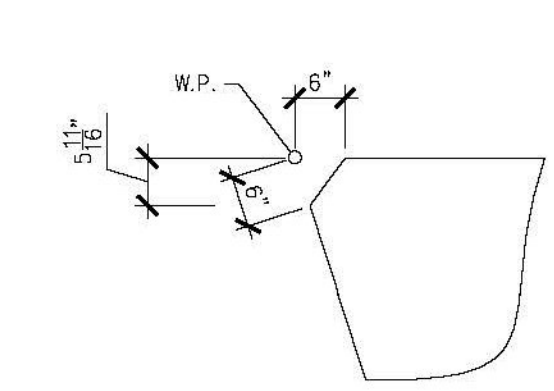


1 DIMENSIONAL PLAN VIEW IN FORM
NB2 1/4" = 1'-0"

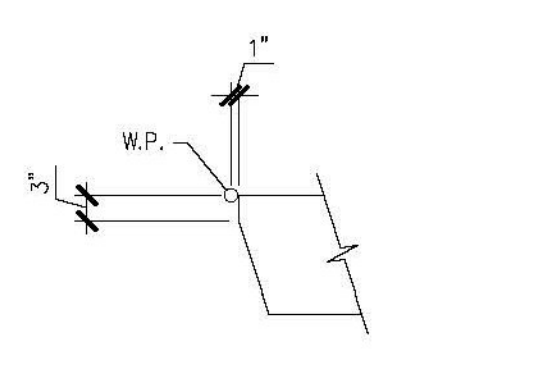
Vermont Agency of Transportation
RECEIVED
ON: **May 26, 2015**
and Checked for
CONFORMANCE
BY: Jennifer Fitch DATE: 05/28/2015



2 REINFORCING PLAN VIEW IN FORM
NB2 1/4" = 1'-0"



A ACUTE CORNER BLOCKOUT DETAIL
NB2 (FOR FLANGE) 1/2" = 1'-0"



B ACUTE CORNER BLOCKOUT DETAIL
NB2 (FOR STEM) 1/2" = 1'-0"

SHOP DRAWING REVIEW

REVIEWED AS REQUIRED BY THE CONSTRUCTION CONTRACT DOCUMENTS AND APPROVED, BUT ONLY FOR CONFORMANCE TO THE DESIGN CONCEPT OF THE WORK, AND SUBJECT TO FURTHER LIMITATIONS AND REQUIREMENTS CONTAINED IN THE CONSTRUCTION CONTRACT DOCUMENTS.

REJECTED REVISE AND RESUBMIT FURNISH AS CORRECTED

CONTRACTOR OR COMMENTS MADE ON THE SHOP DRAWINGS DURING THIS REVIEW DO NOT RELIEVE CONTRACTOR FROM COMPLIANCE WITH REQUIREMENTS OF THE ORDINANCES AND SPECIFICATIONS. THIS CHECK IS ONLY FOR REVIEW OF GENERAL CONFORMANCE WITH THE DESIGN CONCEPT OF THE PROJECT AND GENERAL COMPLIANCE WITH THE INFORMATION GIVEN IN THE CONTRACT DOCUMENTS. THE CONTRACTOR IS RESPONSIBLE FOR CONFIRMING AND CORRECTING ALL QUANTITIES AND DIMENSIONS, SELECTING FABRICATION PROCESSES AND TECHNIQUES OF CONSTRUCTION, COORDINATING HIS WORK WITH THAT OF ALL OTHER TRADES, AND PERFORMING HIS WORK IN A SAFE AND SATISFACTORY MANNER.

40 IDX Drive
Building 100, Suite 200
South Burlington, VT 05403
802.497.6100

Job Number: 57632.00
Reviewed By: E.F. LAWES
Date: May 27, 2015

MARK:	CT-NB1	QTY.:	2	WT.:	48.19 T	VOL.:	23.80 cy
MATERIAL LIST / NEXT BEAM							
ITEM	MARK	DESCRIPTION				QTY.	
1	CT-401L	#4 BENT BAR (LEVEL II, DUAL COATED)				210	
2	CT-402L	#4 BENT BAR (LEVEL II, DUAL COATED)				240	
3	CT-404L	#4 BENT BAR (LEVEL II, DUAL COATED)				4	
4	CT-405L	#4 BENT BAR (LEVEL II, DUAL COATED)				16	
5	CT-407L	#4 BENT BAR (LEVEL II, DUAL COATED)				13	
6	CT-408L	#4 BENT BAR (LEVEL II, DUAL COATED)				5	
7	CT-409L	#4 BENT BAR (LEVEL II, DUAL COATED)				4	
8	CT-410L	#4 BENT BAR (LEVEL II, DUAL COATED)				5	
9	CT-509L	#5 BENT BAR (LEVEL II, DUAL COATED)				32	
10	CT-517L	#5 BENT BAR (LEVEL II, DUAL COATED)				2	
11	CT-518L	#5 BENT BAR (LEVEL II, DUAL COATED)				4	
12	CT-519L	#5 BENT BAR (LEVEL II, DUAL COATED)				2	
13	CT-520L	#5 BENT BAR (LEVEL II, DUAL COATED)				2	
14	CT-521L	#5 BENT BAR (LEVEL II, DUAL COATED)				2	
15	CT-522L	#5 BENT BAR (LEVEL II, DUAL COATED)				2	
16	CT-602L	#6 BENT BAR (LEVEL II, DUAL COATED)				22	
17	CT-610L	#6 BENT BAR (LEVEL II, DUAL COATED)				16	
18							
19							
20							
21							
22		#4 x 8'-1 1/2" (LEVEL II, DUAL COATED)				28	
23		#5 x 7'-8 1/2" (LEVEL II, DUAL COATED)				244	
24		#5 x 7'-9" (LEVEL II, DUAL COATED)				12	
25		#5 x 7'-10" (LEVEL II, DUAL COATED)				8	
26		#5 x 7'-11" (LEVEL II, DUAL COATED)				8	
27		#5 x 8'-0" (LEVEL II, DUAL COATED)				8	
28							
29		#6 x 66'-9" (W/ (1) 2'-2" STAGGERED LAP) (40' + 26'-11") (LVL. II, DUAL COATED)				22	
30							
31							
32							
33		2" I.D. PVC SLEEVE				4	
34		SET OF (4) 1/2" x 270 KSI STRAND LIFTING LOOPS				4	
35	MK-CT6	DAYTON B-16 1/2" x 3" LONG COIL LOOP INSERTS (ELECTROPLATED GALV.)				34	

J.P. CARRARA & SONS INC. Precast & Prestress Manufacturer 2464 GISE STR., MIDDLEBURY, VERMONT 05753 Phone:(802)388-6361 Fax:(802)388-9010		SCHULTZ CONSTRUCTION CONTRACTOR BALLSTON SPA, NY	
STATE OF VERMONT AGENCY OF TRANSPORTATION COUNTY OF RUTLAND		DATE: MAY 06, 2015 SCALE: NOTED	
TOWN OF CASTLETON VT ROUTE 30 (RURAL MINOR ARTERIAL) BRIDGE NO.: 93 PROJECT NO.: BRF 015-2(10)		CHKD: R.M. DFTM: PSS JOB NO: 23456-015	
PRESTRESSED NEXT BEAM DETAILS "CT-NB1" DWG. NO: NB2			