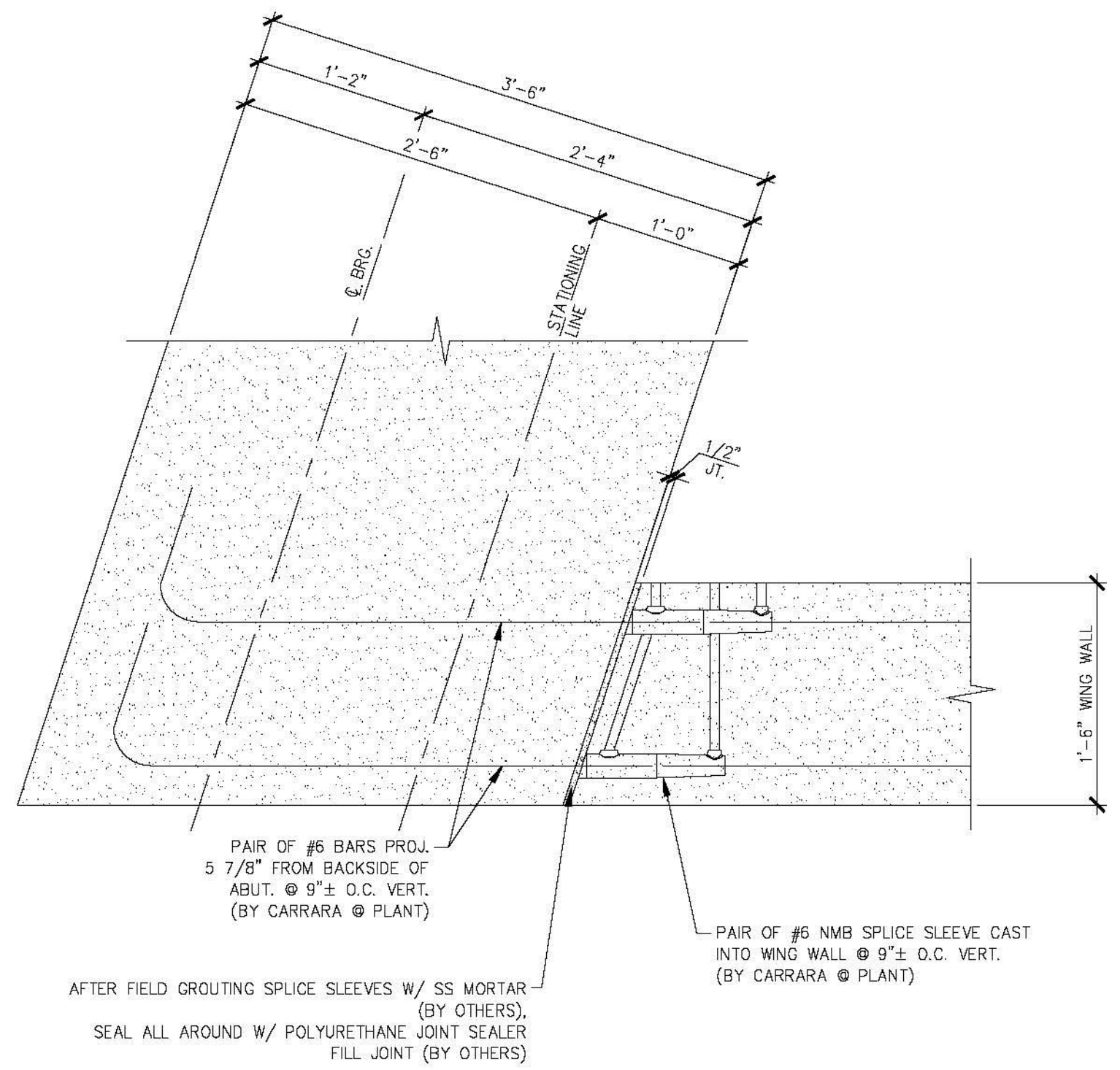
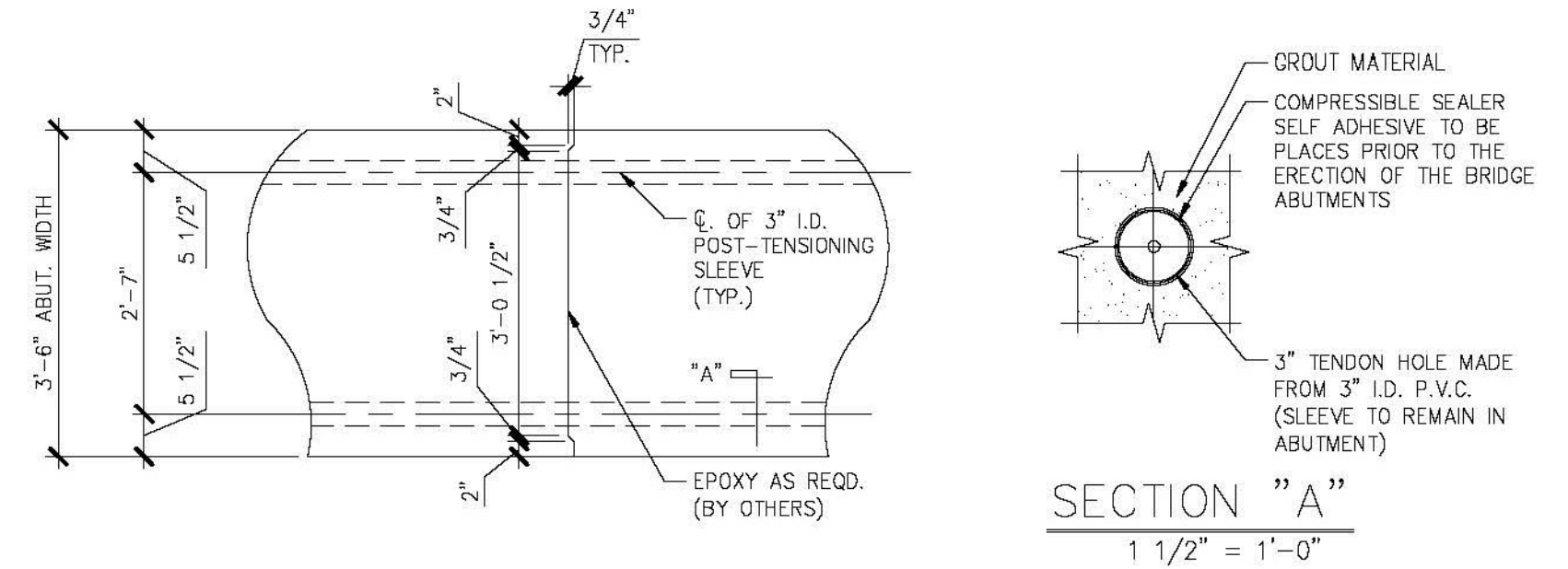


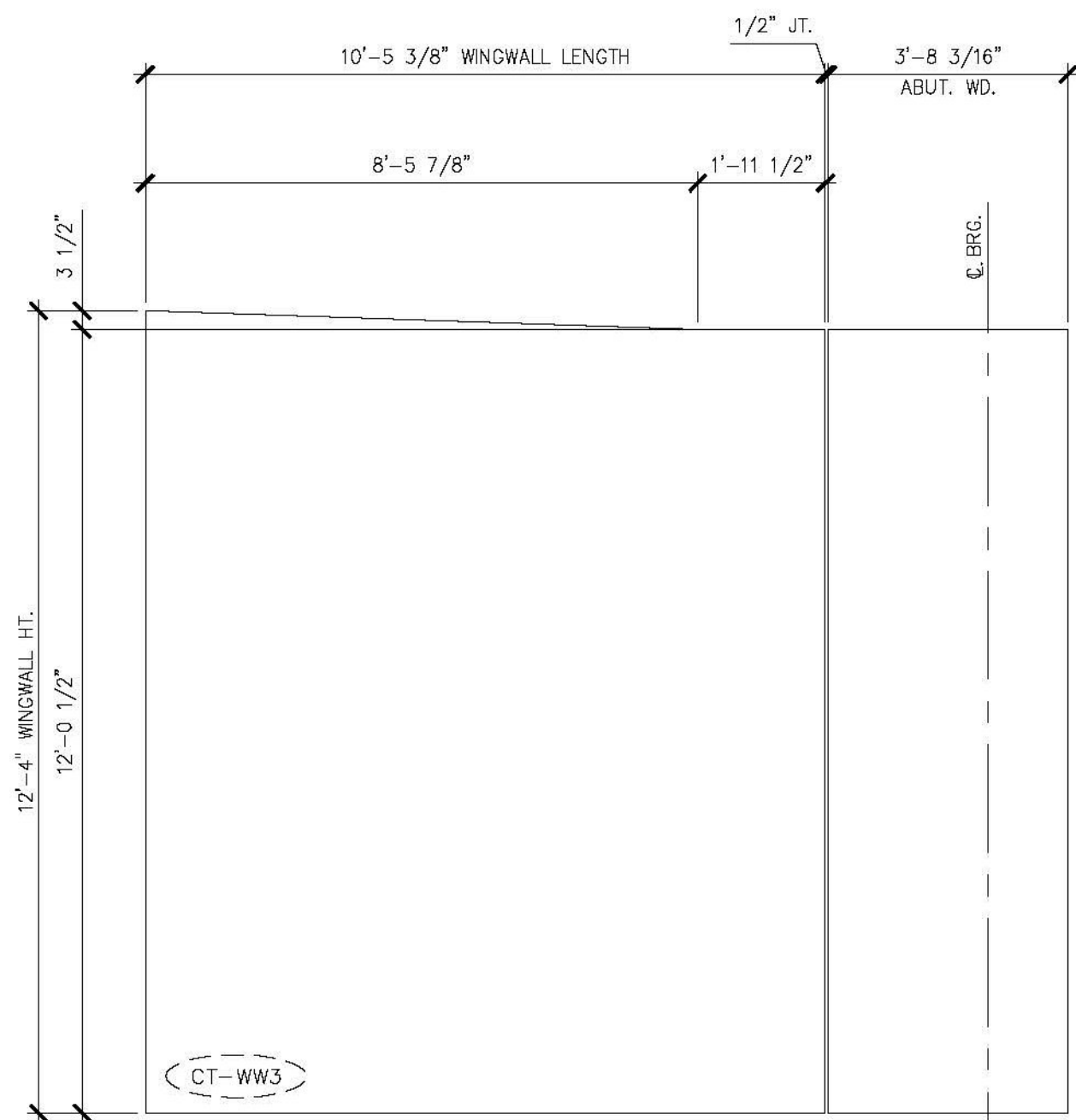
1 ABUTMENT #2 ELEVATION
 F3
 3/8" = 1'-0"



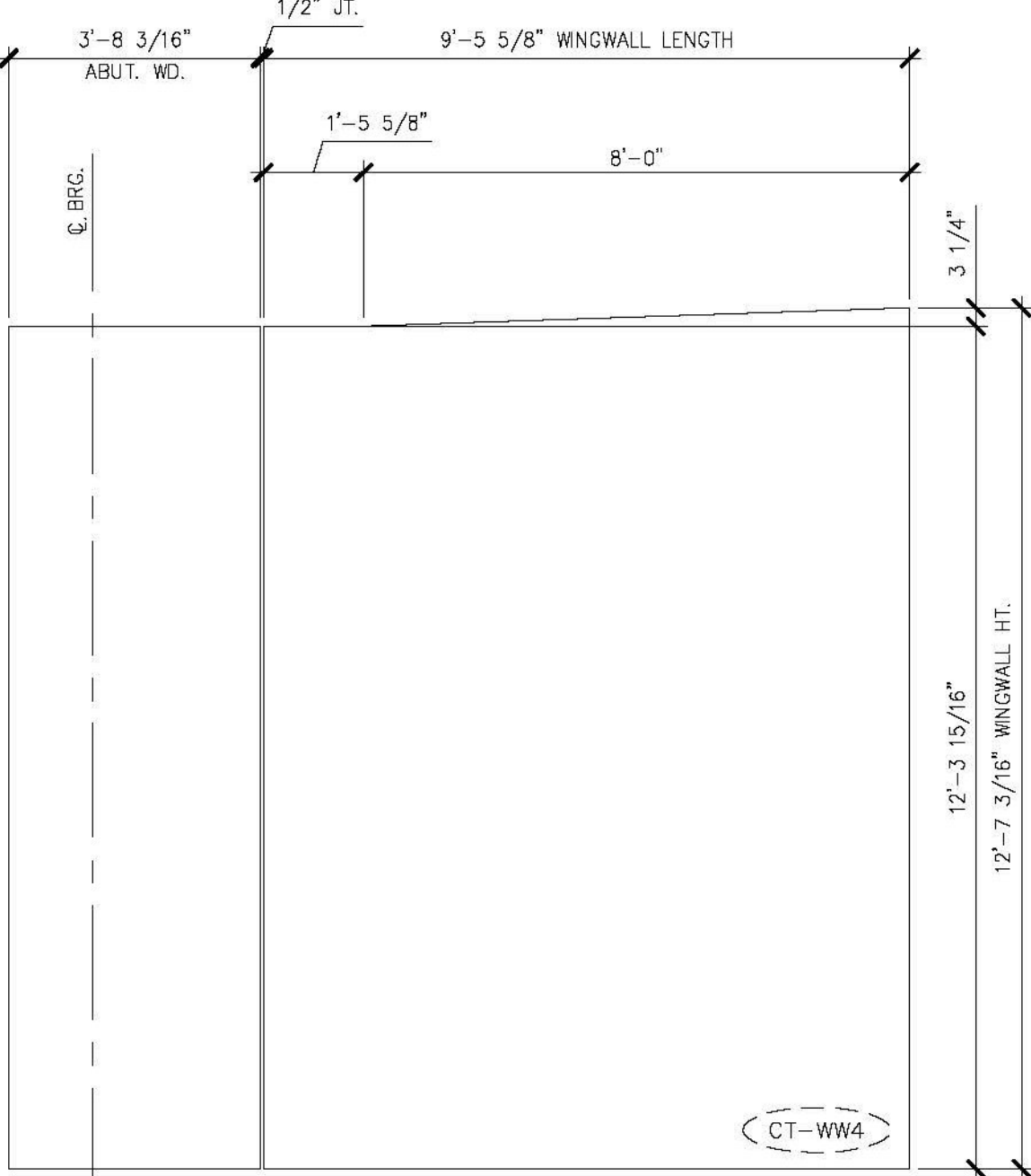
A WING WALL CONNECTION DETAIL
 F3
 1" = 1'-0"



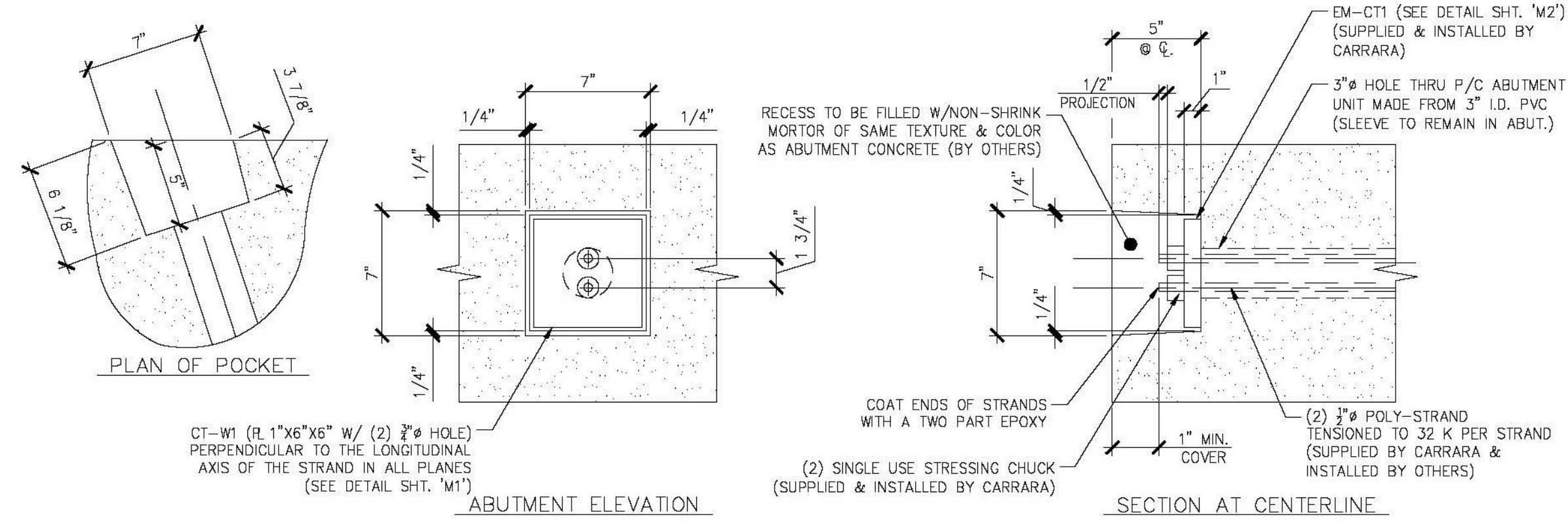
B MATCH CAST SECTION @ P.T. SLEEVE
 F3
 1/2" = 1'-0"



2 WINGWALL #3 ELEVATION
 F3
 3/8" = 1'-0"



3 WINGWALL #4 ELEVATION
 F3
 3/8" = 1'-0"



C POCKET DETAIL
 F3
 1 1/2" = 1'-0"

Vermont Agency of Transportation
RECEIVED
 ON: **May 26, 2015**
 and Checked for
CONFORMANCE
 BY: Jennifer Fitch DATE: 05/28/2015

SHOP DRAWING REVIEW

REVIEWED AS REQUIRED BY THE CONSTRUCTION CONTRACT DOCUMENTS AND APPROVED, BUT ONLY FOR CONFORMANCE TO THE DESIGN CONCEPT OF THE WORK, AND SUBJECT TO FURTHER LIMITATIONS AND REQUIREMENTS CONTAINED IN THE CONSTRUCTION CONTRACT DOCUMENTS.

RECEIVED REVISE AND REQUERY FURNISH AS CORRECTED

CONTRACTOR OR COMMENTS MADE ON THE SHOP DRAWINGS DURING THIS REVIEW DO NOT RELIEVE CONTRACTOR FROM COMPLIANCE WITH REQUIREMENTS OF THE DRAWINGS AND SPECIFICATIONS. THIS CHECK IS ONLY FOR REVIEW OF GENERAL CONFORMANCE WITH THE DESIGN CONCEPT OF THE PROJECT AND GENERAL COMPLIANCE WITH THE INFORMATION GIVEN IN THE CONTRACT DOCUMENTS. THE CONTRACTOR IS RESPONSIBLE FOR CONFIRMING AND CORRELATING ALL QUANTITIES AND DIMENSIONS, SELECTING FABRICATION PROCESSES AND TECHNOLOGIES OF CONSTRUCTION, COORDINATING HIS WORK WITH THAT OF ALL OTHER TRADES, AND PERFORMING HIS WORK IN A SAFE AND SATISFACTORY MANNER.

40 IDX Drive
 Building 100, Suite 200
 South Burlington, VT 05403
 802.497.6100

Job Number: 57832.00
 Reviewed By: E.F. LAWES
 Date: May 27, 2015

J.P. CARRARA & SONS INC.
 Precast & Prestress Manufacturer
 2464 GGE STR., MIDDLEBURY, VERMONT 05753 Phone: (802)388-6361 Fax: (802)388-9010

SCHULTZ CONSTRUCTION
 CONTRACTOR
 BALLSTON SPA, NY

STATE OF VERMONT AGENCY OF TRANSPORTATION
 COUNTY OF RUTLAND

TOWN OF CASTLETON
 VT ROUTE 30 (RURAL MINOR ARTERIAL)
 BRIDGE NO.: 93 PROJECT NO.: BRF 015-2(10)

DATE: MAY 06, 2015
 SCALE: NOTED
 CHKD: R.M. DFTM: PSS
 JOB NO: 23456-015
 DWG. NO: F3

ABUTMENT #2 ELEVATION