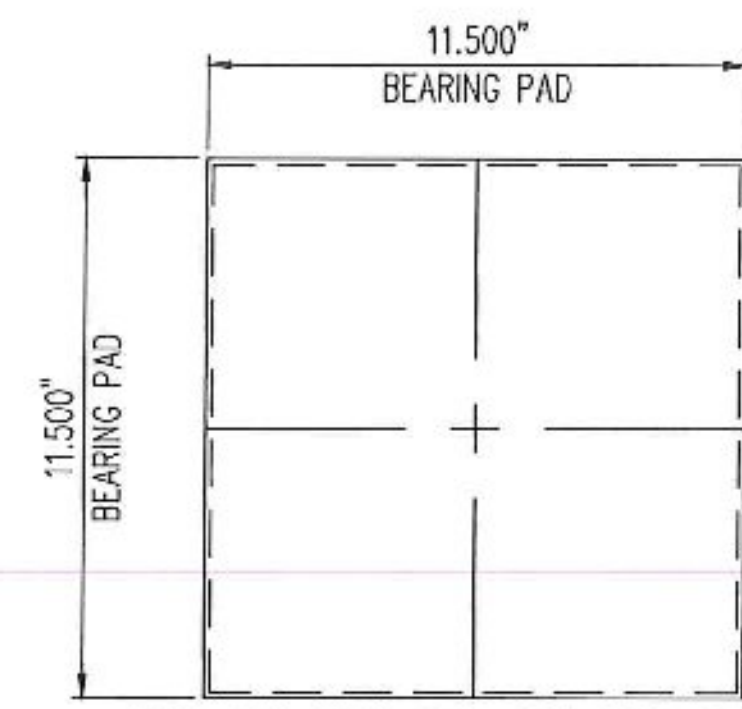


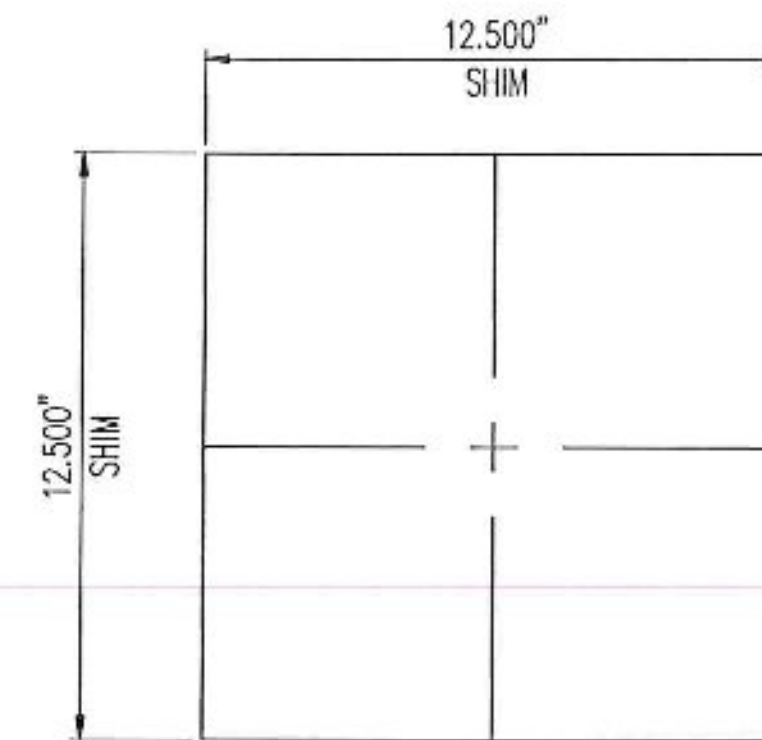
GENERAL NOTES:

- MATERIALS SHALL CONFORM TO STATE OF VERMONT, AGENCY OF TRANSPORTATION STANDARD SPECIFICATIONS FOR CONSTRUCTION, DATED 2011 AND THE LATEST REVISIONS, INCLUDING SUPPLEMENTARY SPECIFICATIONS, CONTRACT PLANS, AND THE SPECIAL PROVISIONS. GENERAL SHOP PRACTICES, STRUCTURAL FABRICATION, WELDING AND ASSEMBLY SHALL BE GOVERNED BY ANSI/AASHTO/AWS D1.5 BRIDGE WELDING CODE.
- THIS SHOP DRAWING WAS PREPARED IN ACCORDANCE WITH THE CONTRACT PLANS AND SPECIFICATIONS. THE D.S. BROWN COMPANY DOES NOT ACCEPT LIABILITY FOR THE DESIGN OF THE PRODUCTS DETAILED IN THIS SHOP DRAWING.
- THE D.S. BROWN COMPANY TO SUPPLY ONLY THE PARTS SHOWN ON THIS DRAWING.
- THE BEARINGS SHALL BE SUBJECT TO RANDOM IN-HOUSE ELASTOMER TESTING AND IN-HOUSE PROOF LOAD TESTING IN ACCORDANCE WITH AASHTO LRFD BRIDGE DESIGN SPECIFICATIONS, SECTION 14 (METHOD 'A') AND AASHTO LRFD CONSTRUCTION SPECIFICATIONS SECTION 18.
- BEARINGS SHALL BE TESTED IN ACCORDANCE WITH THE SPECIAL PROVISIONS.
- WELDING PROCEDURES, IF APPLICABLE, SHALL BE ESTABLISHED BY THE CONTRACTOR TO RESTRICT THE MAXIMUM TEMPERATURE REACHED BY SURFACES IN CONTACT WITH THE ELASTOMER TO 200°F (93°C). TEMPERATURES SHALL BE DETERMINED BY TEMPERATURE INDICATING WAX PENCILS OR OTHER SUITABLE MEANS.
- ALL STEEL SHALL BE PRODUCED IN THE UNITED STATES OF AMERICA.
- ALL CORNERS AND EDGES OF STEEL PLATES SHALL BE GROUND TO A 1/16" RADIUS FOR GALVANIZING.
- ALL EXTERNAL STEEL SHALL BE GALVANIZED IN ACCORDANCE WITH AASHTO M111 AND M232 (ASTM 123 & 153) SPECIFICATIONS. IN ACCORDANCE WITH SECTION 726.08 OF THE STANDARD SPECIFICATIONS, REPAIR DAMAGED HOT DIPPED GALVANIZING PER ASTM A780, ANNEX A2. THE PAINT USED IN THE REPAIR SHALL BE ORGANIC-ZINC, CONTAINING 92% MINIMUM ZINC BY WEIGHT IN THE DRY FILM. THE PAINT SHALL BE APPLIED PER MANUFACTURER'S RECOMMENDATIONS TO A THICKNESS EQUIVALENT TO THE SURROUNDING GALVANIZING.
- GALVANIZATION LIFTING DEVICES MAY BE WELDED TO PARTS IF NECESSARY. WHEN THEIR USE IS COMPLETE, REMOVE AND GRIND FLUSH ALL CONNECTION LOCATIONS. REPAIR AREA PER ASTM A780, ANNEX A2.
- BEARING MANUFACTURING FACILITY AND REPRESENTATIVE FOR COORDINATING PRODUCTION:
THE D.S. BROWN COMPANY
300 EAST CHERRY STREET
NORTH BALTIMORE, OHIO 45872
CSR - MARCIE THOMPSON - (419) 257-3561

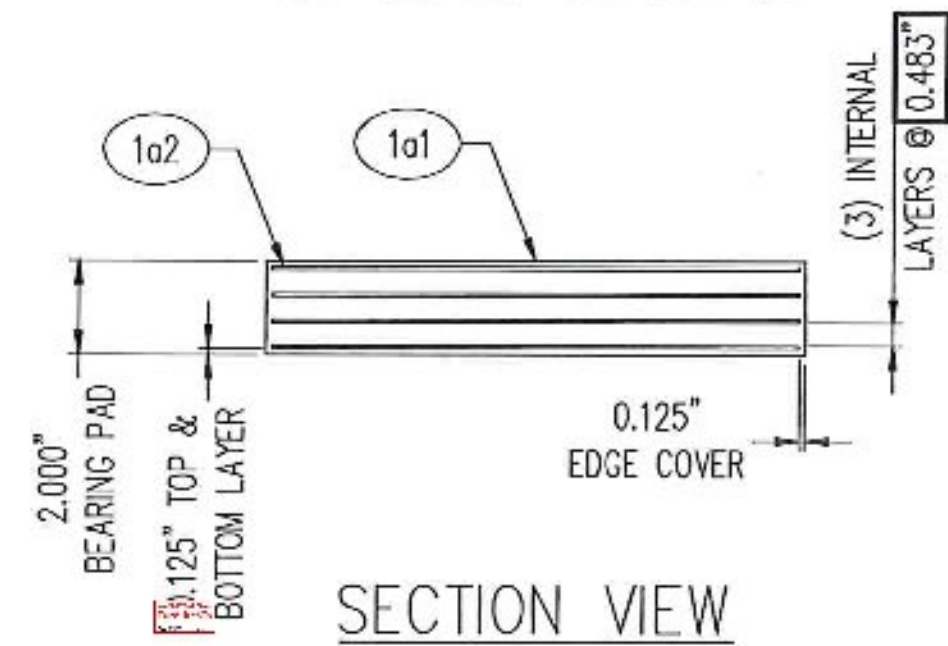
PLATES WITHOUT HOLES NEED A WASHER WELDED TO THEM TO BE LIFTED IN AND OUT OF GALVANIZING BATH.



1A - PLAN VIEW
LAMINATED ELASTOMERIC BEARING
DSB ITEM 46246.1103.1
(16) REQ'D @ BRIDGE 93, ABUT. 1 & 2

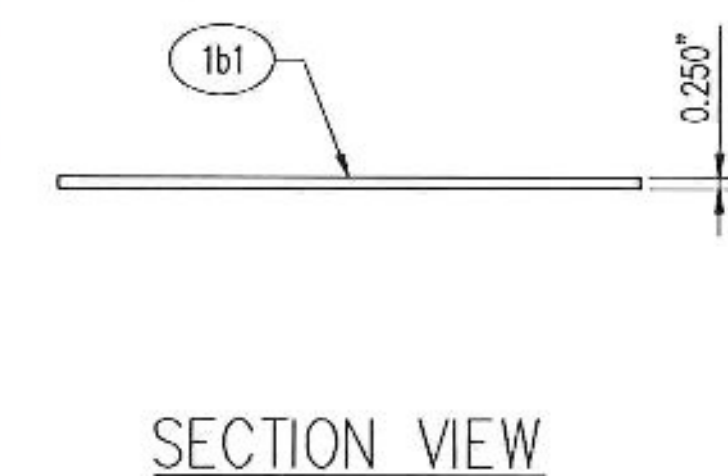


1B - PLAN VIEW
ADJUSTING SHIM
DSB ITEM 46246.1107.1
(16) REQ'D @ BRIDGE 93, ABUT. 1 & 2



SECTION VIEW

~~INTERNAL LAYER THICKNESS HAS BEEN REDUCED SLIGHTLY DUE TO THICKER SHIMS. PLEASE VERIFY THIS IS ACCEPTABLE.~~
Please remove note, this change is acceptable.



SECTION VIEW

MK	QTY	DESCRIPTION	MATERIAL	LENGTH	REMARKS	WT*	REV
1A	16	ELASTOMERIC BEARING	46246.1103.1			21	A
1a1	16	2.000" X 11.500"	NATURAL RUBBER	11.500"	60+/-5 DURO GR.4	11	A
1a2	64	14 GA. X 11.250"	A1011 GR 36	11.250"	PLAIN	3	A
1B	16	ADJUSTING SHIM	46246.1107.1			11	
1b1	16	0.250" X 12.500"	A709 GR 36	12.500"	A123-HDG	11	
		*Approx. Gross Wt. Lbs Per Single Unit					2/25/2015 1:53:48 PM

TOLERANCE TABLE	
DESCRIPTION	TOLERANCE (INCHES U.N.O.)
ELASTOMERIC BEARING DESIGN THICKNESS ≤ 1.250"	-0, +0.1181
ELASTOMERIC BEARING DESIGN THICKNESS > 1.250"	-0, +0.2362
ELASTOMERIC BEARING PLAN DIMENSIONS ≤ 36"	-0, +0.2362
ELASTOMERIC BEARING PLAN DIMENSIONS > 36"	-0, +0.4724
THICKNESS OF INDIVIDUAL LAYERS OF ELASTOMER (LAMINATED BEARINGS ONLY) AT ANY POINT WITHIN THE BEARING	±0.1181
VARIATION FROM A PLANE PARALLEL TO THE THEORETICAL SURFACE (AS DETERMINED BY MEASUREMENTS AT THE EDGE OF THE BEARINGS) (PARALLELISM):	
TOP & BOTTOM	±0.005 RAD
SIDES	±0.2362
POSITION OF EXPOSED CONNECTION MEMBERS	±0.1181
ELASTOMERIC COVER: TOP & BOTTOM	-0, +0.1181
ELASTOMERIC COVER: SIDES	-0, +0.1181
ELASTOMERIC BEARING HOLE OR SLOT SIZE	±0.1181
ELASTOMERIC BEARING HOLE OR SLOT LOCATION	±0.1181

Vermont Agency of Transportation

RECEIVED

ON: February 27, 2015

and Checked for

CONFORMANCE

BY: Jennifer Fitch DATE: 03/10/2015

SHOP DRAWING REVIEW

REVIEWED AS REQUIRED BY THE CONSTRUCTION CONTRACT DOCUMENTS AND APPROVED, BUT ONLY FOR CONFORMANCE TO THE DESIGN CONCEPT OF THE WORK, AND SUBJECT TO FURTHER LIMITATIONS AND REQUIREMENTS CONTAINED IN THE CONSTRUCTION CONTRACT DOCUMENTS.

REJECTED REVISE AND RESUBMIT FURNISH AS CORRECTED

CORRECTIONS OR COMMENTS MADE ON THE SHOP DRAWINGS DURING THIS REVIEW DO NOT RELIEVE CONTRACTOR FROM COMPLIANCE WITH REQUIREMENTS OF THE DRAWINGS AND SPECIFICATIONS. THIS CHECK IS ONLY FOR REVIEW OF GENERAL CONFORMANCE WITH THE DESIGN CONCEPT OF THE PROJECT AND GENERAL COMPLIANCE WITH THE INFORMATION GIVEN IN THE CONTRACT DOCUMENTS. THE CONTRACTOR IS RESPONSIBLE FOR: CONFIRMING AND CORRELATING ALL QUANTITIES AND DIMENSIONS; SELECTING FABRICATION PROCESSES AND TECHNIQUES OF CONSTRUCTION; COORDINATING HIS WORK WITH THAT OF ALL OTHER TRADES; AND PERFORMING HIS WORK IN A SAFE AND SATISFACTORY MANNER.

40 IDX Drive Building 100, Suite 200 South Burlington, VT 05403 802.497.6100	Job Number: 57632.00 Reviewed By: E.F. Lawes Date: March 2, 2015
---	--

REVIEWED

By Jeff Clark (jeff.clark@state.vt.us) at 8:52 am, Mar 09, 2015

REVIEWED AS REQUIRED BY THE CONSTRUCTION CONTRACT DOCUMENTS AND APPROVED, BUT ONLY FOR CONFORMANCE TO THE DESIGN CONCEPT OF THE WORK, AND SUBJECT TO FURTHER LIMITATIONS AND REQUIREMENTS CONTAINED IN THE CONSTRUCTION CONTRACT DOCUMENTS.

REJECTED REVISE AND RESUBMIT FURNISH AS CORRECTED

CORRECTIONS OR COMMENTS MADE ON THE SHOP DRAWINGS DURING THIS REVIEW DO NOT RELIEVE CONTRACTOR FROM COMPLIANCE WITH REQUIREMENTS OF THE DRAWINGS AND SPECIFICATIONS. THIS CHECK IS ONLY FOR REVIEW OF GENERAL CONFORMANCE WITH THE DESIGN CONCEPT OF THE PROJECT AND GENERAL COMPLIANCE WITH THE INFORMATION GIVEN IN THE CONTRACT DOCUMENTS. THE CONTRACTOR IS RESPONSIBLE FOR: CONFIRMING AND CORRELATING ALL QUANTITIES AND DIMENSIONS; SELECTING FABRICATION PROCESSES AND TECHNIQUES OF CONSTRUCTION; COORDINATING HIS WORK WITH THAT OF ALL OTHER TRADES; AND PERFORMING HIS WORK IN A SAFE AND SATISFACTORY MANNER.

40 IDX Drive Building 100, Suite 200 South Burlington, VT 05403 802.497.6100	Job Number: 57632.00 Reviewed By: E.F. Lawes Date: March 2, 2015
---	--

THE D.S. BROWN COMPANY
300 E. CHERRY STREET
NORTH BALTIMORE, OHIO 45872
419.257.3561
FAX: 419.257.0332
WWW.DSBROWN.COM

REV.	DESCRIPTION	DATE	DET.	CKD.
1	REMOVE SAMPLES, REVISE ELASTOMER GRADE IN BOM	2/25/15	CMM	EAK

ITEM	QUANTITY
BRIDGE - BRIDGE 93	-
PROJECT -	-
F.A.P. NO. - BRF 015-2(10)	-
P.O. NO. -	-
DESIGNER - VANASSE HANGEN BRUSTLIN, INC.	-
CUSTOMER - W M SCHULTZ CONSTRUCTION INC	-

DESCRIPTION: VERSIFLEX ELASTOMERIC BEARING RUTLAND CO., VT	SCALE: N.T.S.	DRAWN BY: CMM	CHECKED BY: EAK	DATE: 2/5/2015	BRIDGE SHEET: -
PRODUCT NUMBER: 46246	PRODUCT CODE: 1103	RELEASE: 1	SHEET: 01		