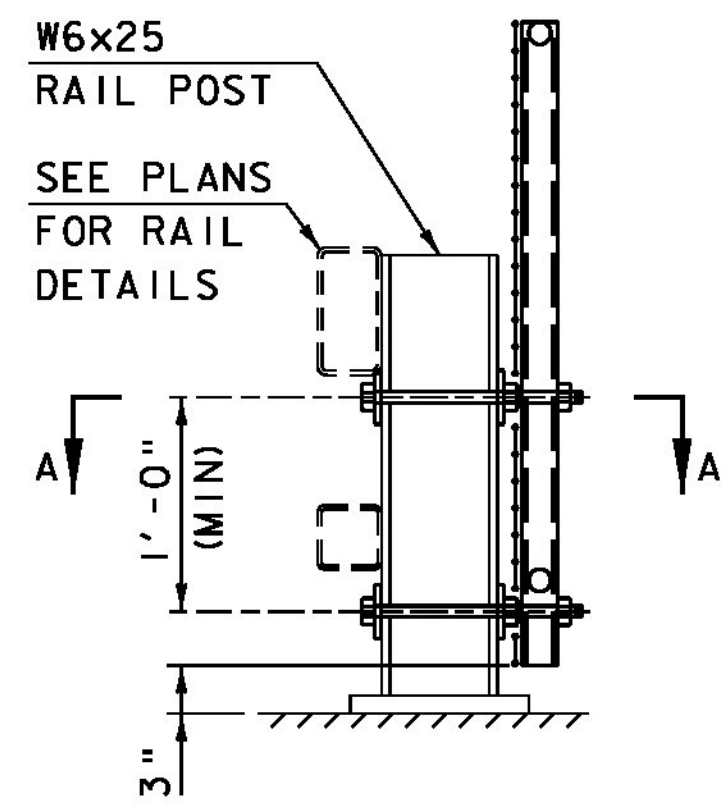
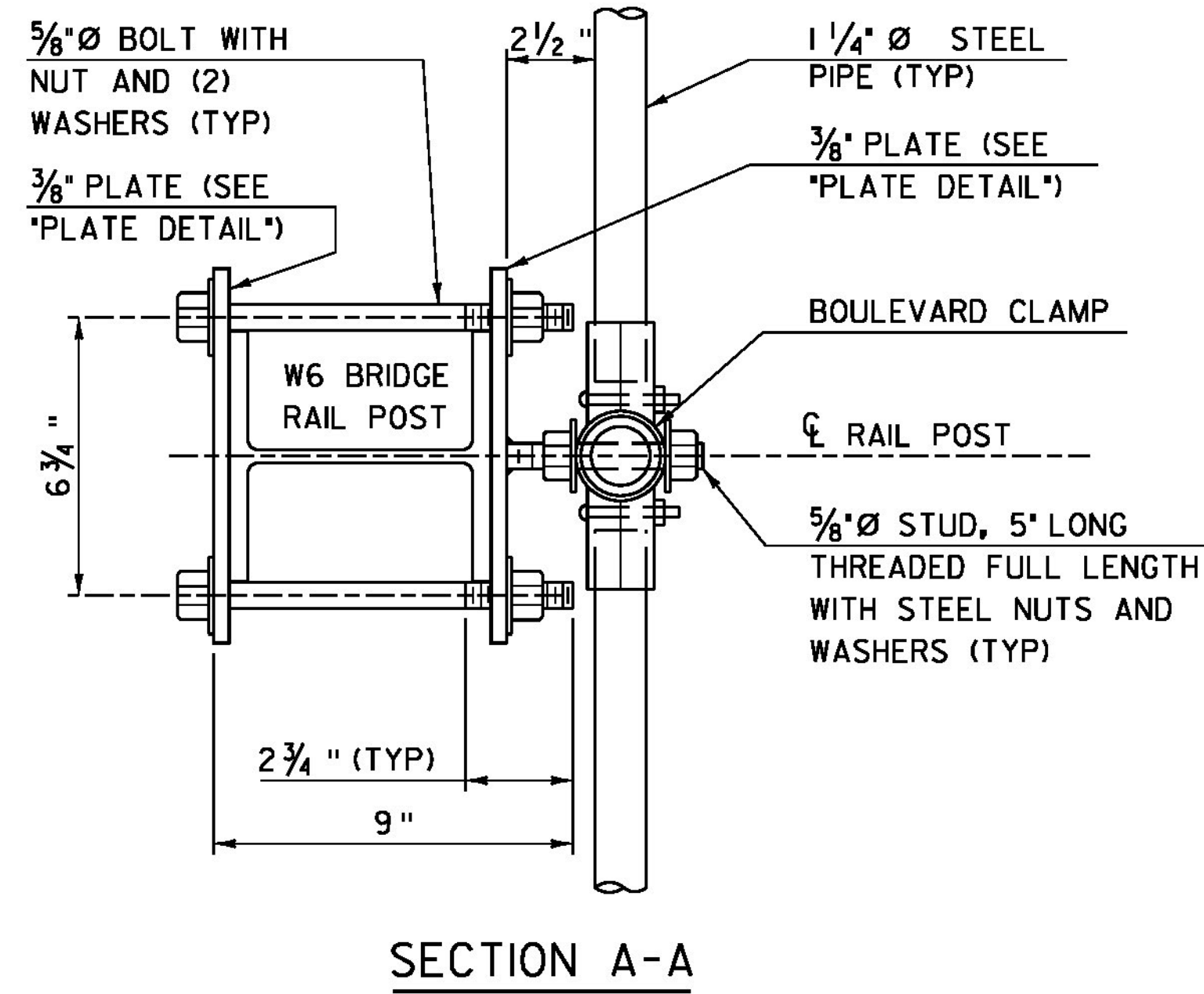


**NOTES**

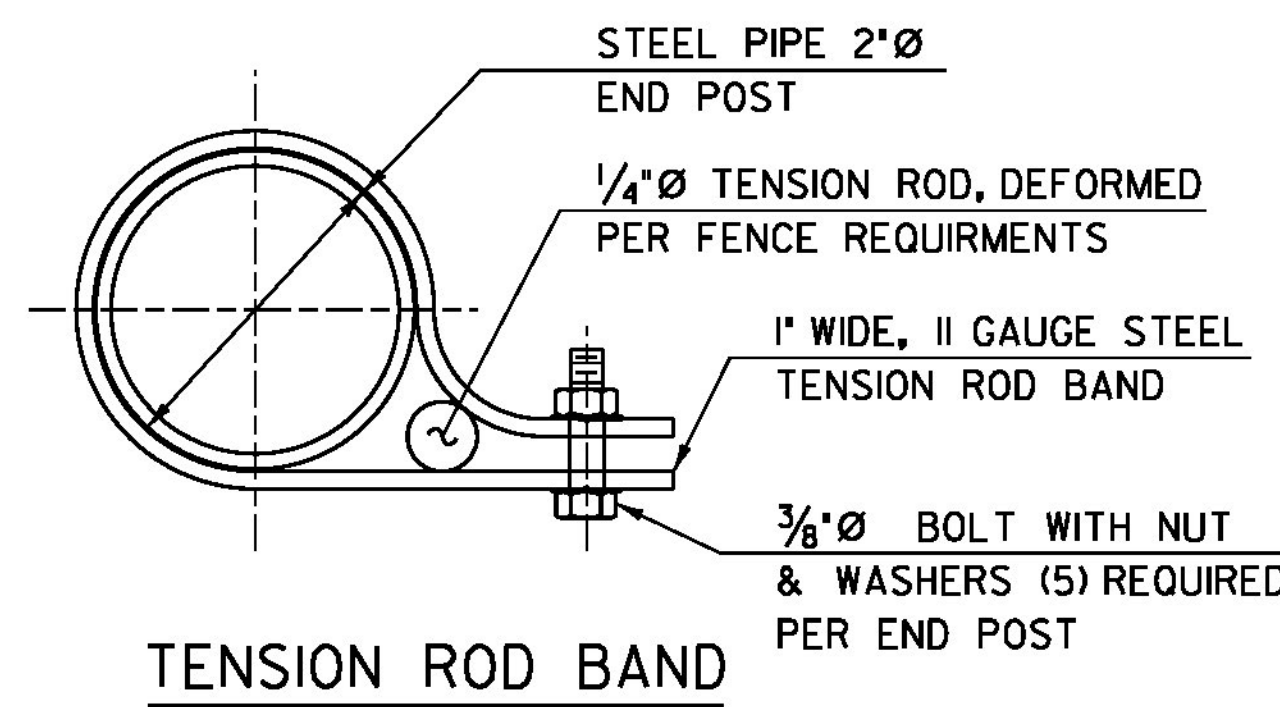
1. ALL WORK AND MATERIAL SHALL CONFORM TO SECTION 620.
2. THIS SNOW BARRIER CAN BE USED WITH GALVANIZED 2, 3, AND 4 RAIL BOX BEAM.
3. 1 1/4" PIPE LENGTH SHALL BE FIELD CUT TO FIT POST SPACING.
4. CHAIN LINK FABRIC TO BE KNUCKLED TOP AND BOTTOM.
5. ALL STEEL PLATES SHALL CONFORM TO AASHTO M270 GRADE 36.
6. SNOW BARRIER SHALL BEGIN AT THE BRIDGE RAIL POST WHICH WILL PROVIDE A MINIMUM DISTANCE OF 20' (AS SHOWN) OR AS DIRECTED BY THE ENGINEER.
7. ALL REFERENCES TO THE DIAMETERS OF GALVANIZED STEEL PIPE SHALL REFER TO THE OUTSIDE DIAMETER (O.D.).
8. ALL STEEL COMPONENTS OF SNOW BARRIER SHALL BE GALVANIZED IN ACCORDANCE WITH SUBSECTION 726.08.



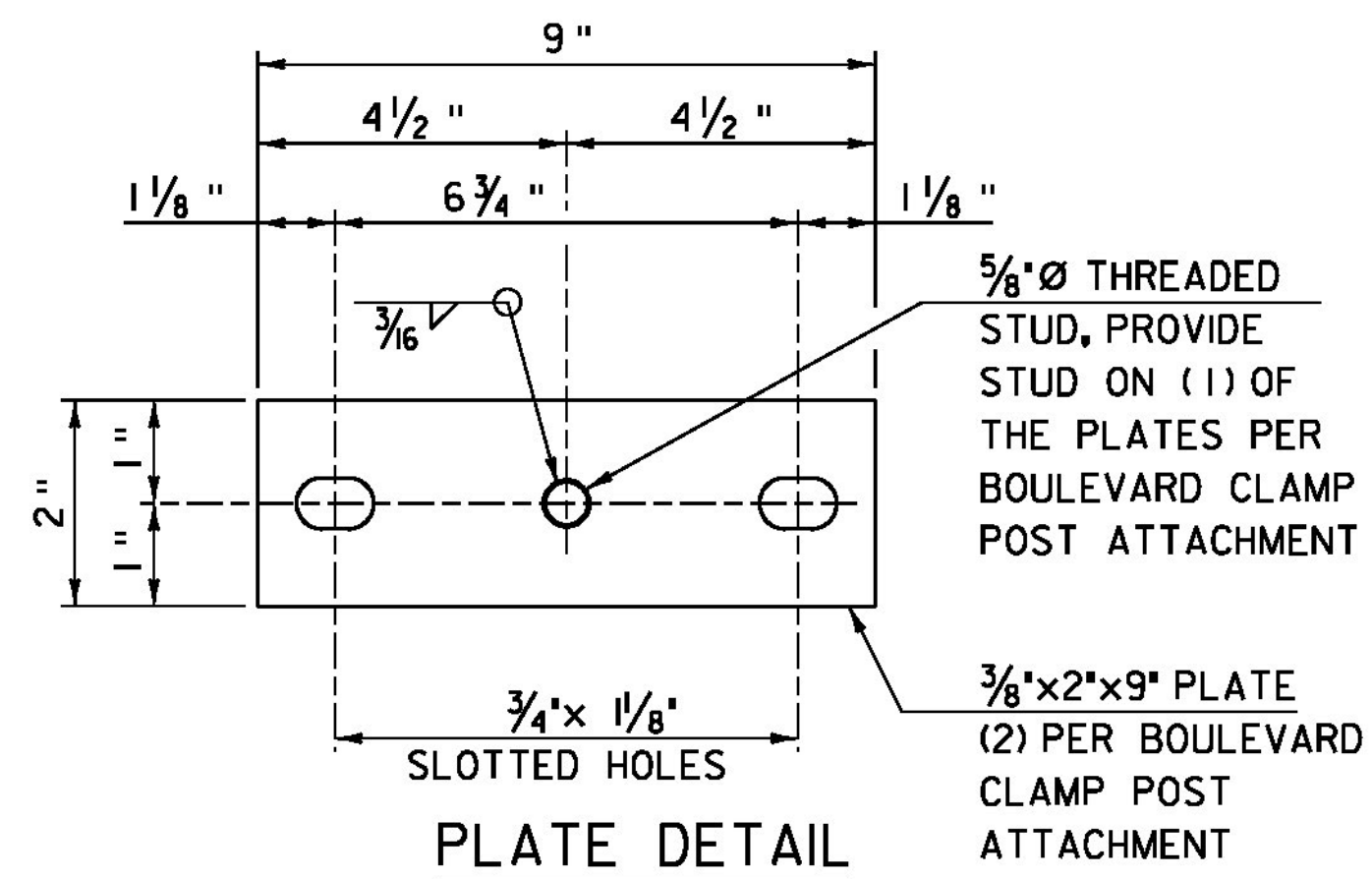
**TYPICAL SECTION**  
FOR SPECIFIC RAIL CONFIGURATION  
AND SIZES SEE PLAN SET



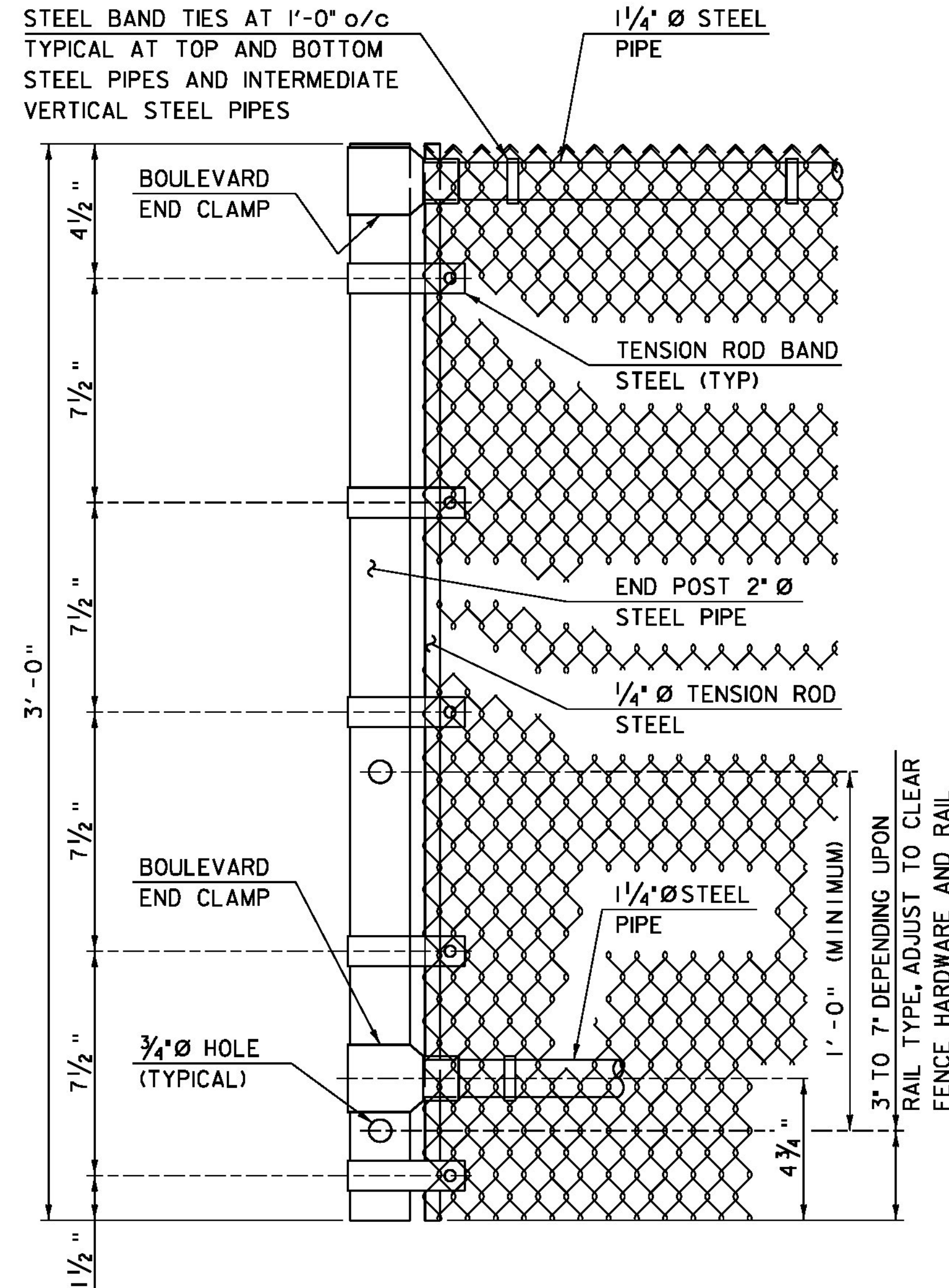
**SECTION A-A**



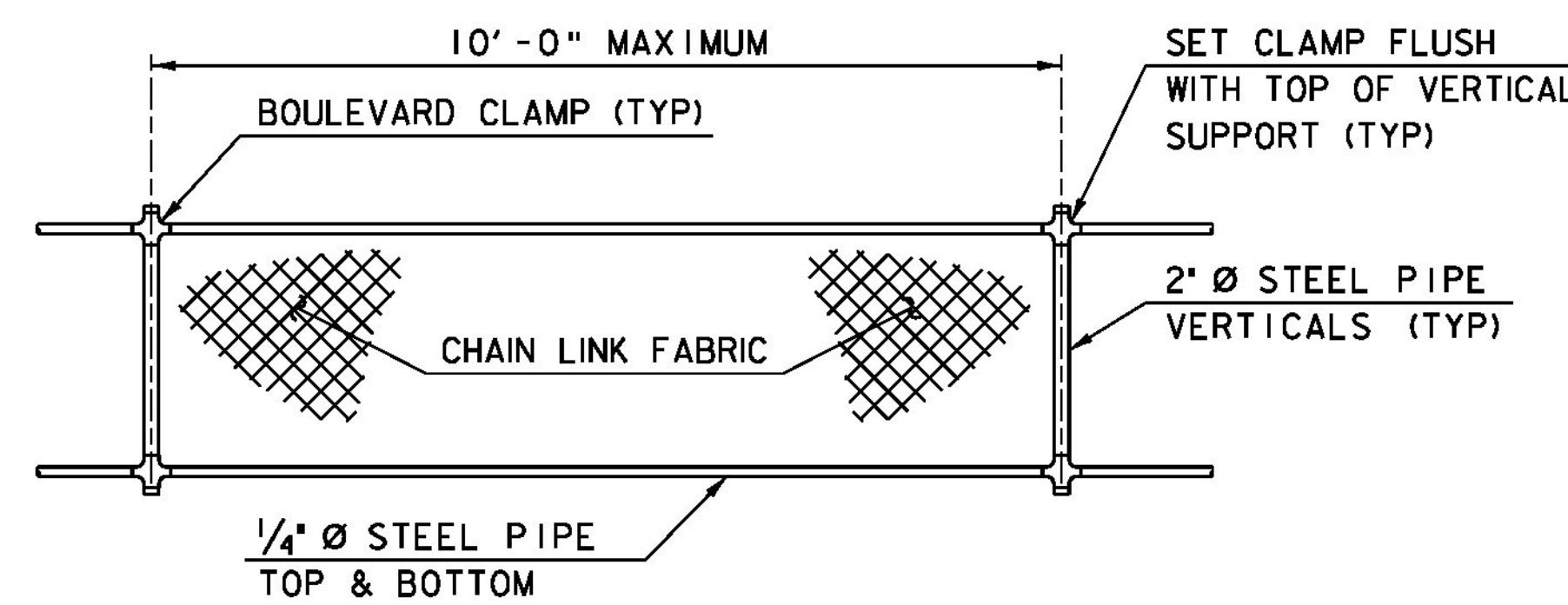
**TENSION ROD BAND**



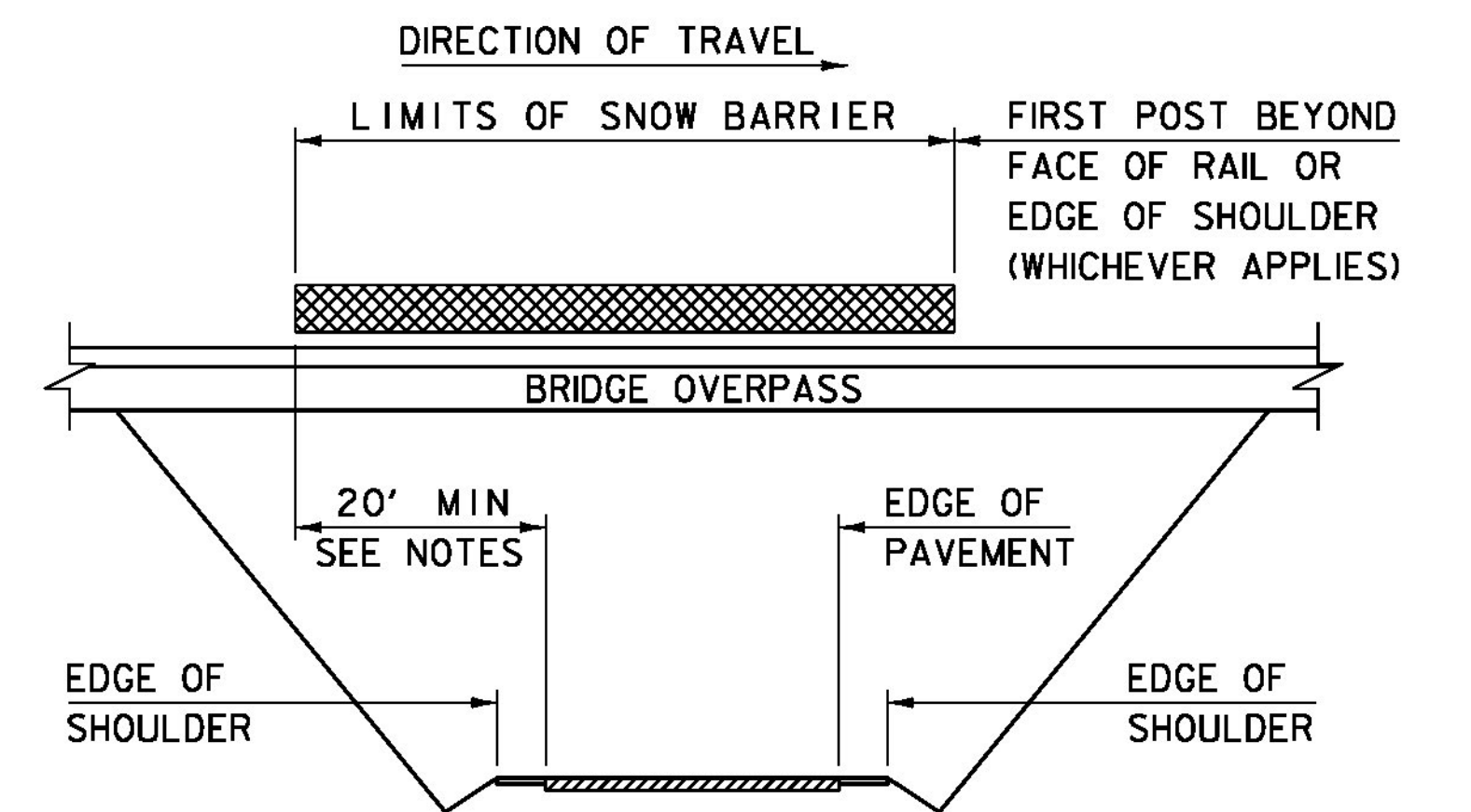
**PLATE DETAIL**



**END POST DETAILS**



**ELEVATION SNOW BARRIER**



**SCHEMATIC SNOW BARRIER LIMITS**

PROJECT NAME: CASTLETON	PLOT DATE: 9/19/2014
PROJECT NUMBER: BRF 015-2(10)	DRAWN BY: A.J. GOUDREAU
FILE NAME: z12bi38snowbarr1er.dgn	DESIGNED BY: VTRANS
PROJECT LEADER: S.E. BURBANK	CHECKED BY: S.E. BURBANK
SNOW BARRIER DETAILS	SHEET 56 OF 82