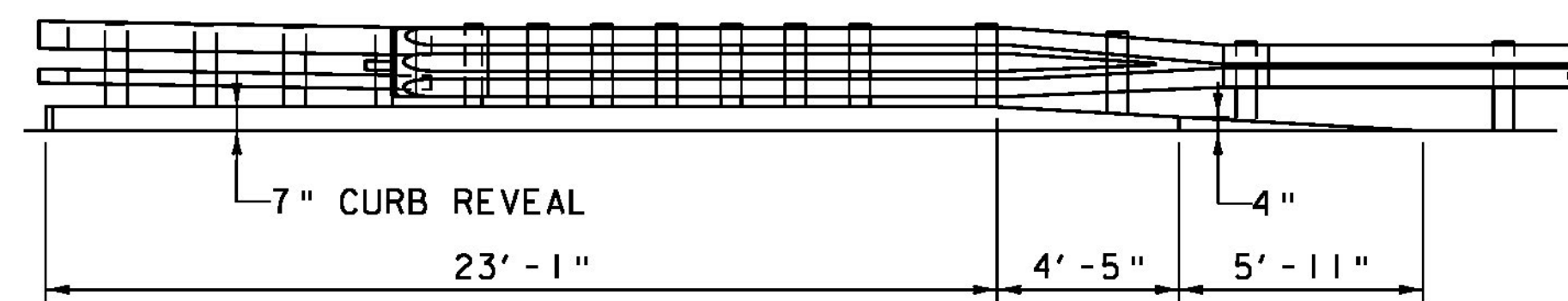
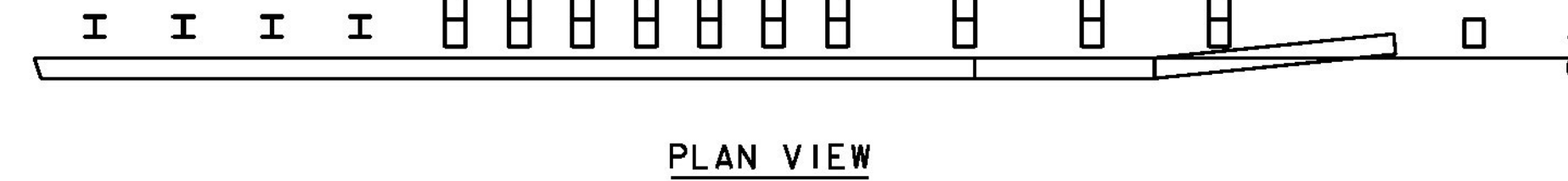
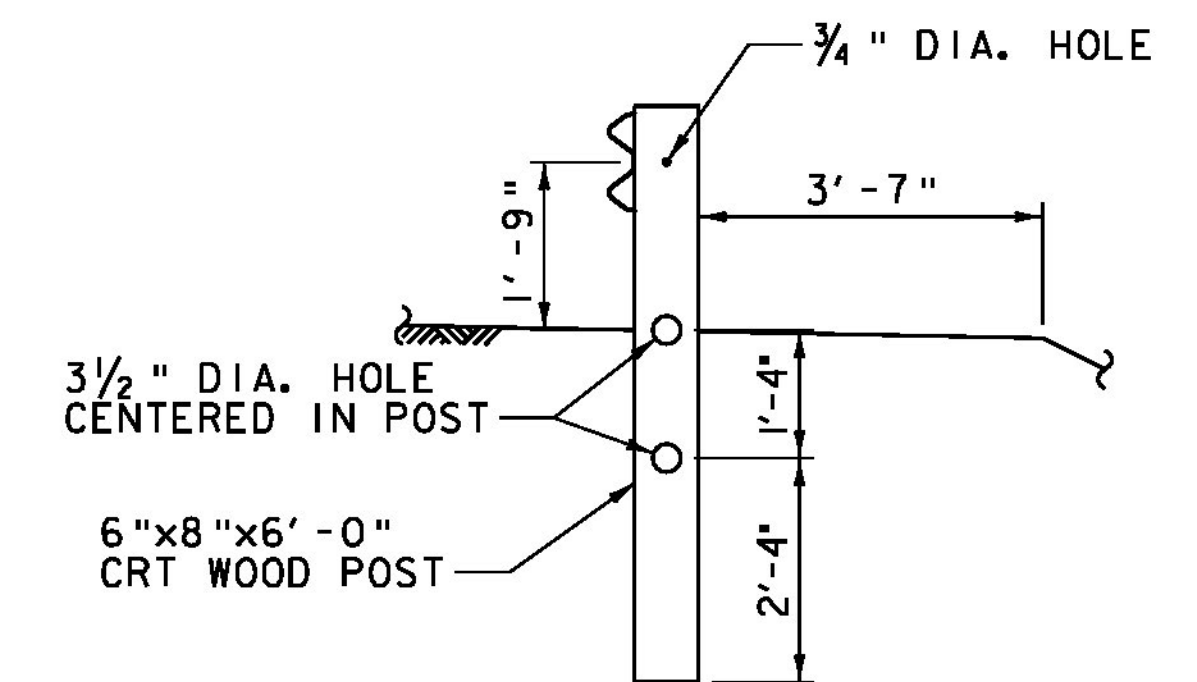


NOTE: SEE STANDARD S-360B FOR APPROACH SECTION LAYOUT.

**BRIDGE RAIL LAYOUT**  
SCALE 1/8" = 1'-0"



**CURB DETAIL AT STA. 65+70 - 66+06, RT**  
SEE STANDARD S-360B FOR INFORMATION NOT SHOWN  
SCALE 1/4" = 1'-0"



**CRT POST DETAIL**  
SCALE 1/2" = 1'-0"

**NOTES:**

1. SEE FHWA TECHNICAL ADVISORY T5040.32 CURVED W-BEAM GUARDRAIL INSTALLATIONS AT MINOR ROADWAY INTERSECTIONS FOR ADDITIONAL INFORMATION.
2. NO WASHERS ARE USED ON THE 5/8" BUTTON HEAD BOLTS (F-3[10"]-76) CONNECTING THE RAIL TO THE CONTROLLED RELEASING TERMINAL (CRT) POSTS.
3. THIS RAIL IS NOT BOLTED TO THE CRT POSTS.
4. THE CURVED GUARDRAIL SECTION SHALL BE SHOP BENT.
5. SEE STANDARD G-1 FOR ADDITIONAL INFORMATION.

PROJECT NAME: CASTLETON	PLOT DATE: 9/19/2014
PROJECT NUMBER: BRF 015-2(10)	DRAWN BY: E.A. FIALA
FILE NAME: z12bi38br-all.dgn	CHECKED BY: S.E. BURBANK
PROJECT LEADER: S.E. BURBANK	DESIGNED BY: E.A. FIALA
BRIDGE RAILING AND GUARDRAIL LAYOUT	SHEET 55 OF 82

