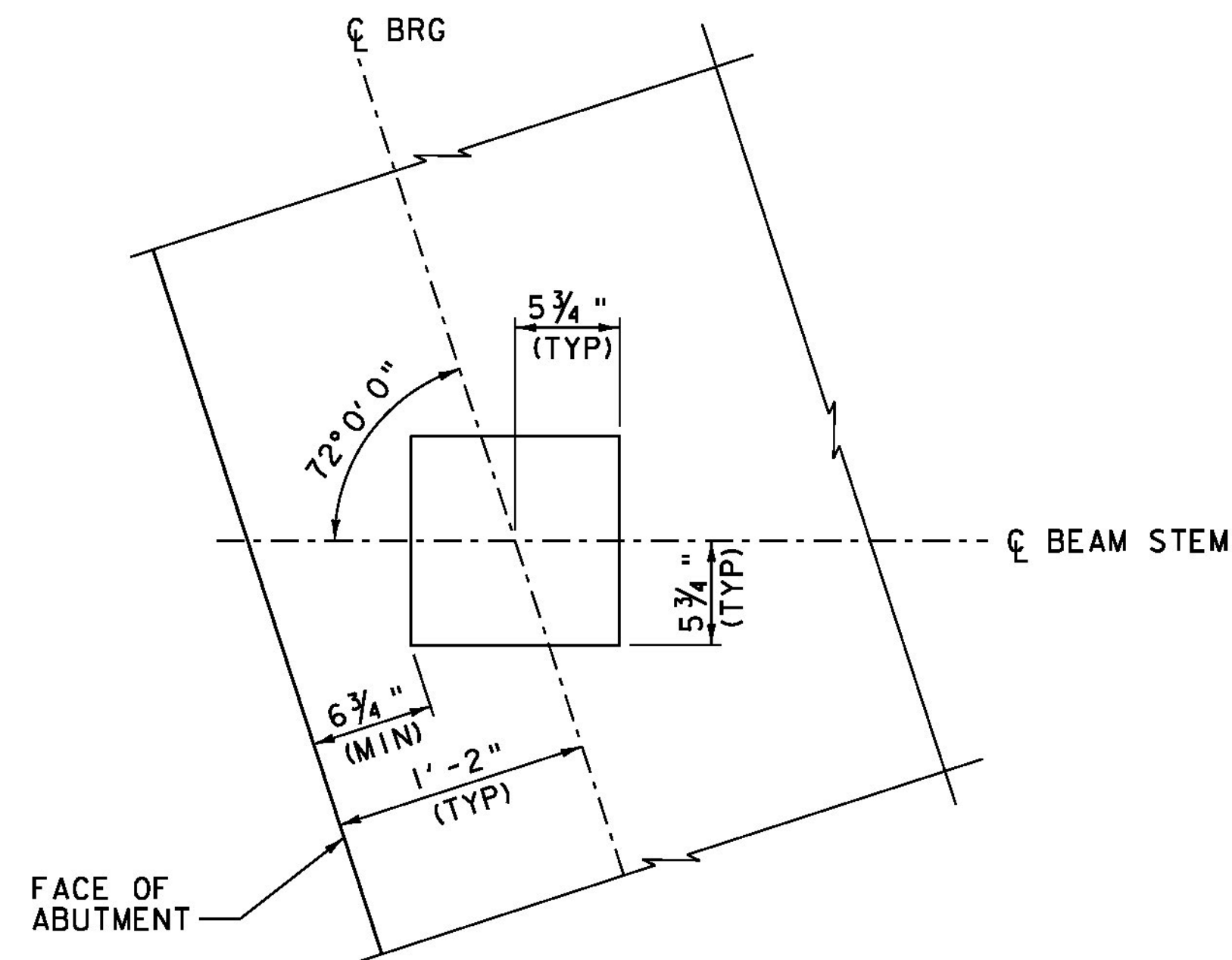


- \* 2 - 1/8" EXTERIOR LAYERS OF ELASTOMER
- 3 - 1/2" INTERIOR LAYERS OF ELASTOMER
- 4 - 1/16" STEEL REINFORCING PLATES

**ELASTOMERIC BEARING DETAIL**

SCALE 3" = 1'-0"

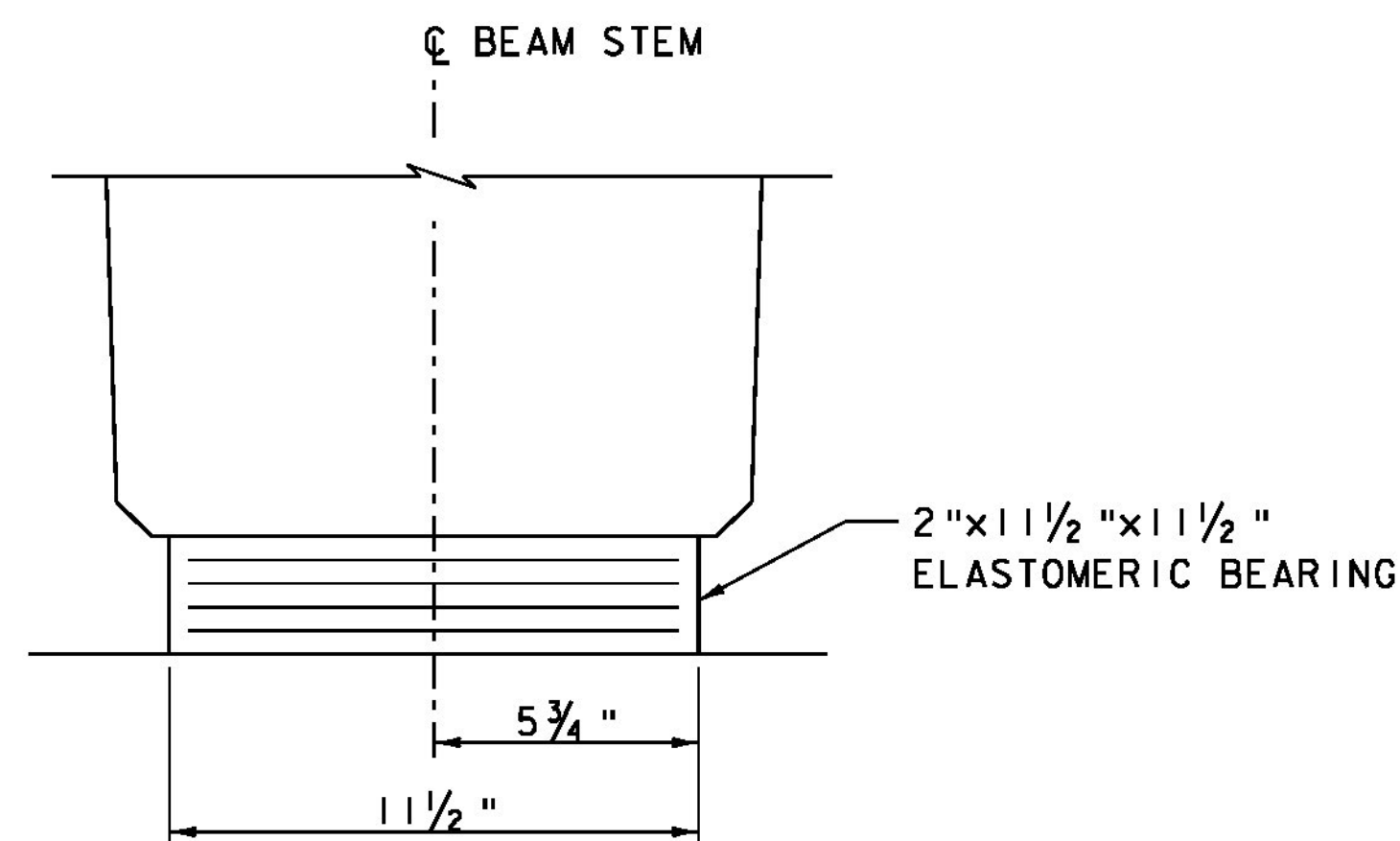


**PLAN**

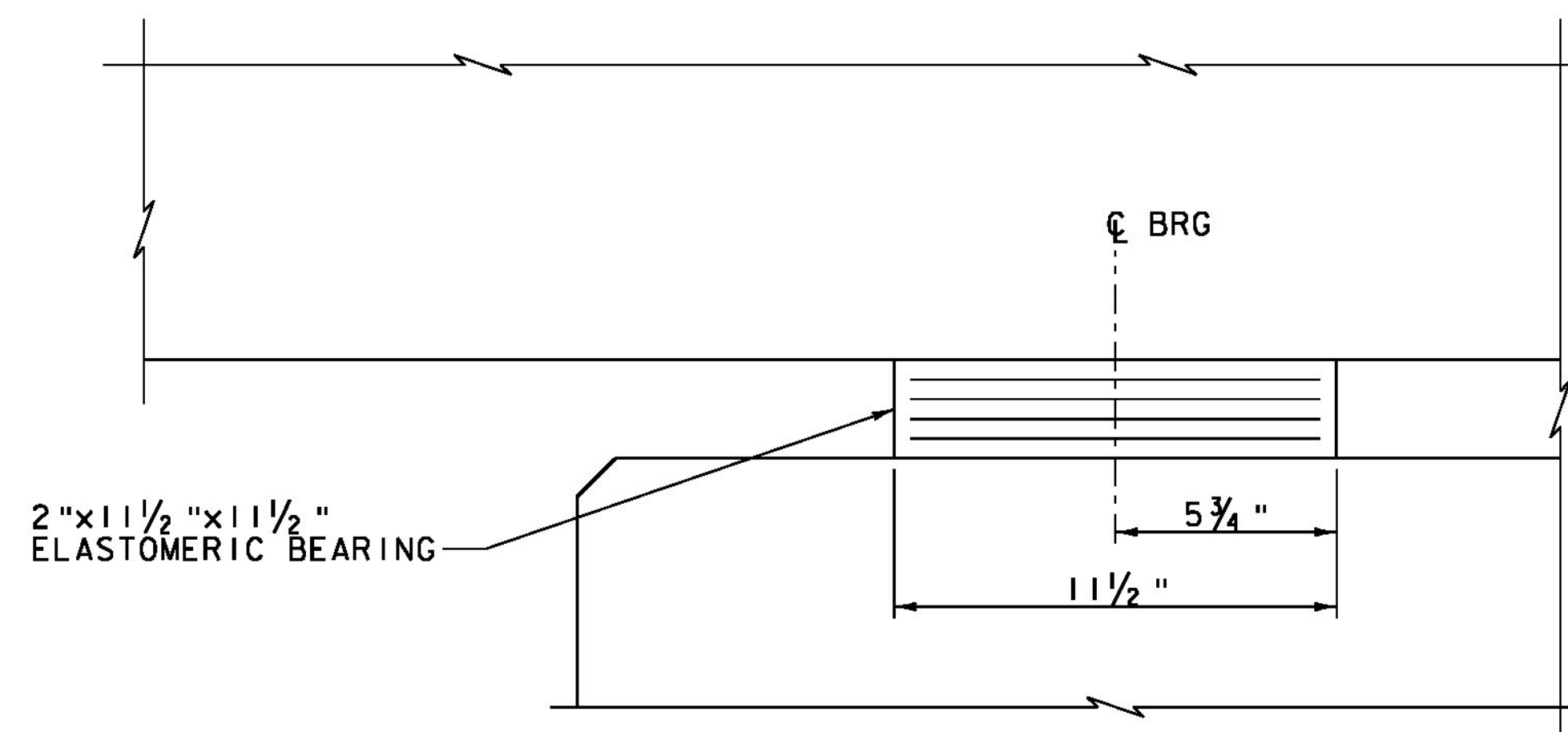
SCALE 1 1/2" = 1'-0"

**BEARING NOTES**

1. BEARINGS SHALL CONFORM TO THE APPLICABLE SUBSECTIONS OF SECTIONS 531 AND 731.
2. ALL REINFORCEMENT BETWEEN LAYERS OF ELASTOMER SHALL BE STEEL MEETING THE REQUIREMENTS OF SUBSECTION 714.02. ALL INTERNAL STEEL PLATES SHALL BE SAND BLASTED AND FREE OF COATINGS, RUST, AND MILL SCALE. THE PLATES SHALL BE FREE OF SHARP EDGES AND BURRS.
3. STEEL REINFORCED ELASTOMERIC BEARINGS SHALL HAVE A MINIMUM 1/8" EDGE SEAL OF ELASTOMER INTEGRAL WITH BEARING OVER ALL INTERNAL PLATES.
4. THE ELASTOMER SHALL BE GRADE 60 SHORE A DUROMETER.
5. THE CONCRETE UNDER THE BEARING DEVICE SHALL BE LEVEL.
6. THE CONTRACTOR IS ADVISED TO HAVE A MINIMUM OF 16 - 1/4"x12 1/2"x12 1/2" GALVANIZED STEEL SHIMS AVAILABLE FOR USE FOR ELEVATION ADJUSTMENTS UPON THE SETTING OF THE SUPERSTRUCTURE UNITS. THE SHIMS SHALL BE FABRICATED ACCORDING TO SECTION 531 AND PAYMENT SHALL BE INCLUDED UNDER ITEM 531.17, "BEARING DEVICE ASSEMBLY, STEEL REINFORCED ELASTOMERIC PAD".



**FRONT ELEVATION**



**SIDE ELEVATION**

**ELASTOMERIC BEARING DETAILS**

SCALE 3" = 1'-0"

**VHB** Vanasse Hangen Brustlin, Inc.

PROJECT NAME: CASTLETON	PLOT DATE: 9/19/2014
PROJECT NUMBER: BRF 015-2(10)	DRAWN BY: E.A. FIALA
FILE NAME: z12b138brg.dgn	CHECKED BY: S.E. BURBANK
PROJECT LEADER: S.E. BURBANK	SHEET 44 OF 82
DESIGNED BY: E.A. FIALA	
BEARING DETAILS	