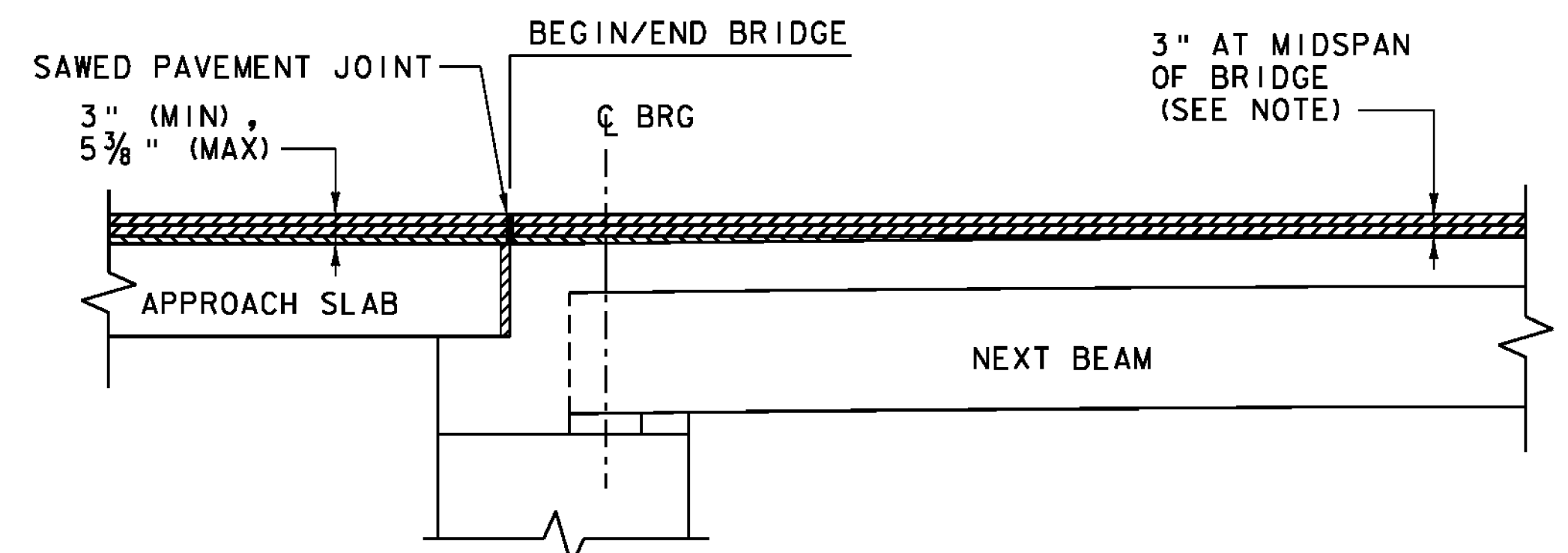


- * (2) - 1 1/2" LIFTS OF TYPE IVS OVER (2) - 3" LIFTS OF TYPE IIS
- ** (2) - 1 1/2" LIFT OF TYPE IVS OVER (1) - 2 3/8" LIFT OF TYPE IIS

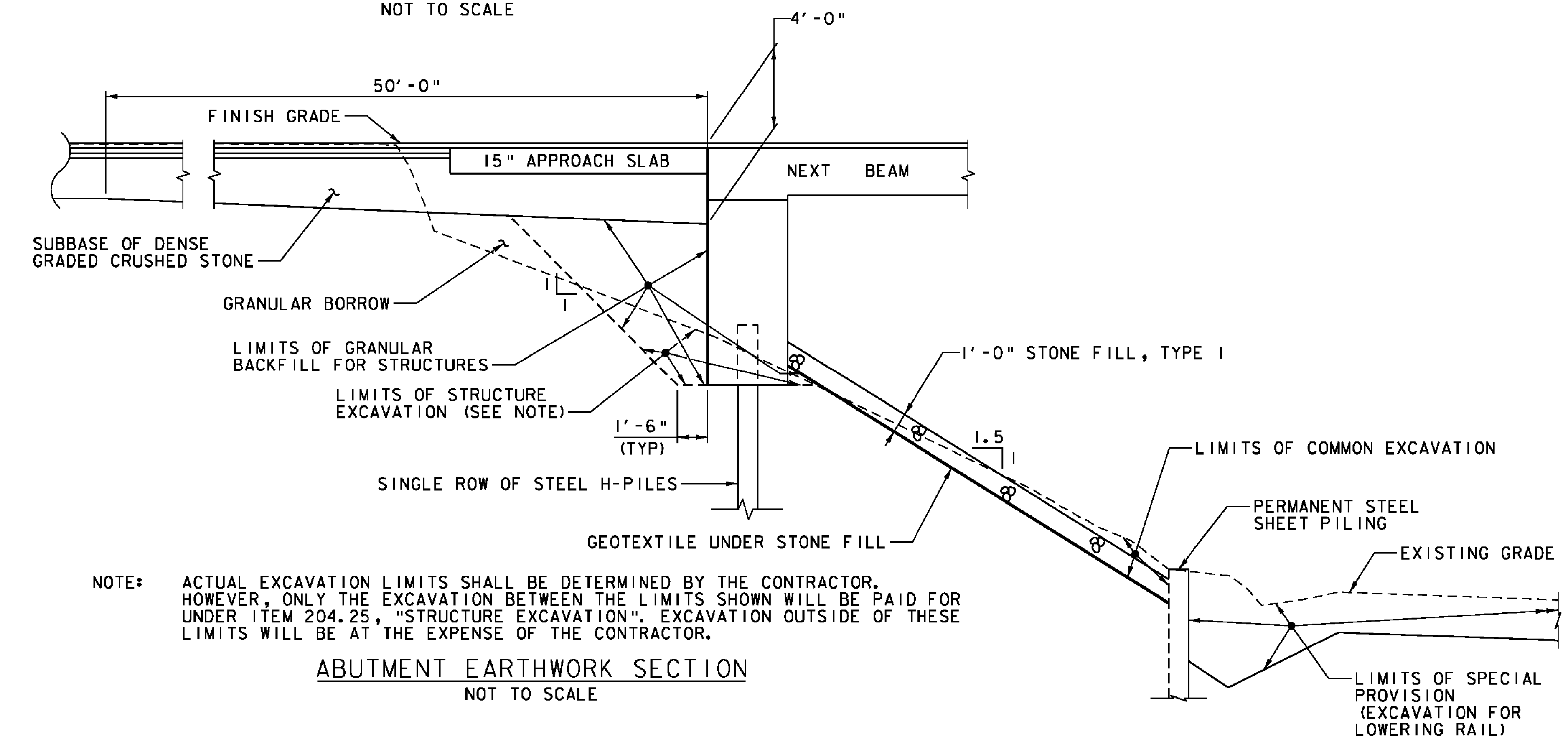
NOTE: EMULSIFIED ASPHALT IS TO BE APPLIED AT A RATE OF 0.040 GAL/SY BETWEEN ALL LIFTS OF BITUMINOUS CONCRETE PAVEMENT, ON ALL COLD PLANED SURFACES, AND THE APPROACH SLAB PRIOR TO PLACING THE FIRST LIFT, AS DIRECTED BY THE ENGINEER.

APPROACH SECTION
NOT TO SCALE



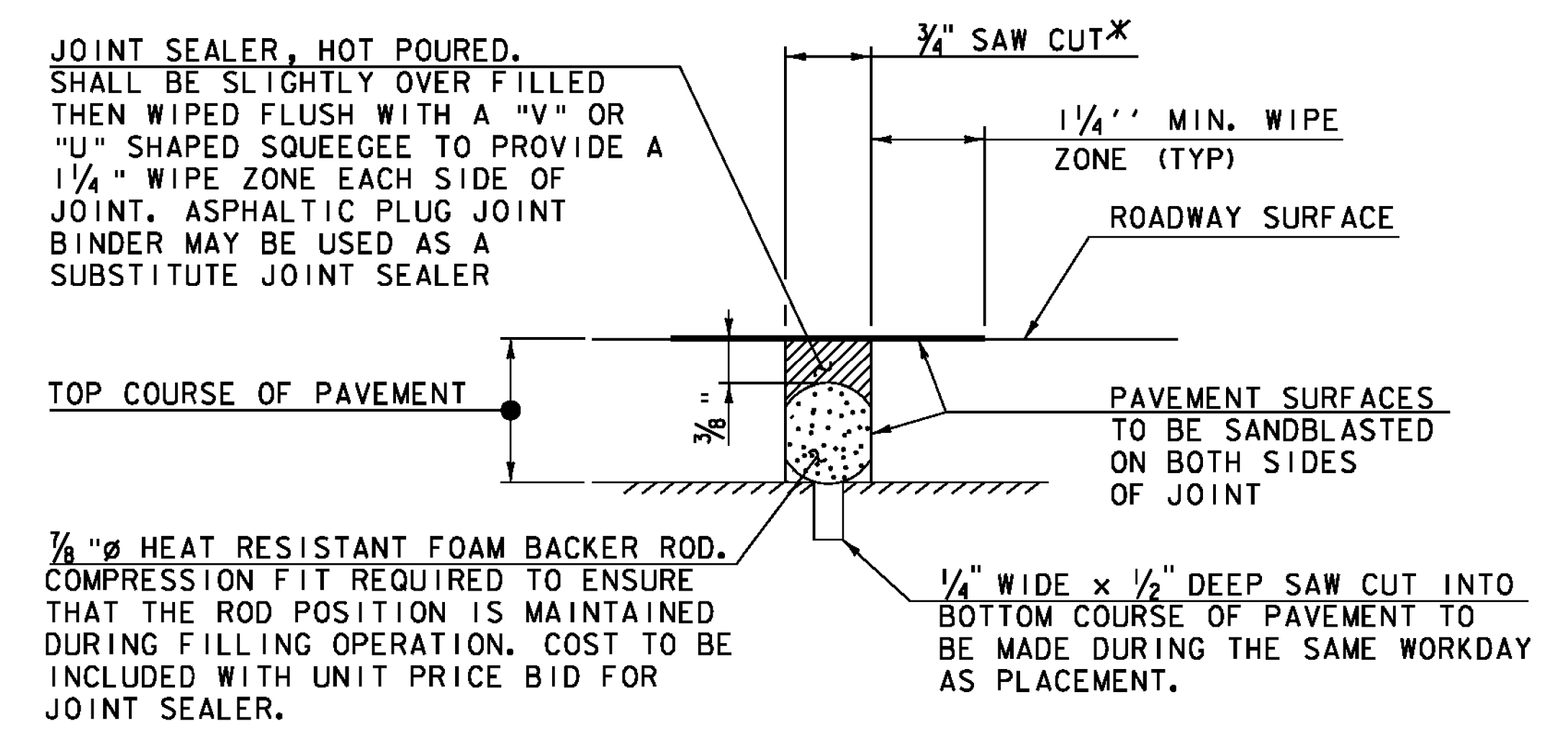
NOTE: PAVEMENT THICKNESS VARIES ON BRIDGE TO ACCOUNT FOR THE DIFFERENCE BETWEEN FINISH GRADE AND DESIGNED CAMBER OF THE BEAMS. SEE NEXT BEAM DETAILS (2 OF 2) FOR PAVEMENT THICKNESS AND PRECAST CONCRETE CURB HEIGHT DETAIL.

PAVEMENT TRANSITION DETAIL
NOT TO SCALE



NOTE: ACTUAL EXCAVATION LIMITS SHALL BE DETERMINED BY THE CONTRACTOR. HOWEVER, ONLY THE EXCAVATION BETWEEN THE LIMITS SHOWN WILL BE PAID FOR UNDER ITEM 204.25, "STRUCTURE EXCAVATION". EXCAVATION OUTSIDE OF THESE LIMITS WILL BE AT THE EXPENSE OF THE CONTRACTOR.

ABUTMENT EARTHWORK SECTION
NOT TO SCALE



JOINT SEALER, HOT POURED. SHALL BE SLIGHTLY OVER FILLED THEN WIPED FLUSH WITH A "V" OR "U" SHAPED SQUEEGEE TO PROVIDE A 1/4" WIPE ZONE EACH SIDE OF JOINT. ASPHALTIC PLUG JOINT BINDER MAY BE USED AS A SUBSTITUTE JOINT SEALER.

7/8" Ø HEAT RESISTANT FOAM BACKER ROD. COMPRESSION FIT REQUIRED TO ENSURE THAT THE ROD POSITION IS MAINTAINED DURING FILLING OPERATION. COST TO BE INCLUDED WITH UNIT PRICE BID FOR JOINT SEALER.

SAWED PAVEMENT JOINT DETAIL
(NOT TO SCALE)

*JOINT IS TO BE LOCATED ACCURATELY BY STRING LINING, OR OTHER MEANS, PRIOR TO PAVING, SO THAT THE SAW CUTS WILL BE MADE DIRECTLY OVER THE END OF CONCRETE DECK. JOINT SHALL BE CUT DRY IN A SINGLE PASS AND BE SEALED WITHIN 24 HOURS OR PRIOR TO EXPOSURE TO TRAFFIC. JOINT SHALL BE CLEANED PRIOR TO APPLYING THE JOINT SEALER.

PROJECT NAME: CASTLETON	FILE NAME: z12b138typ.dgn	PLOT DATE: 10/16/2014
PROJECT NUMBER: BRF 015-2(10)	PROJECT LEADER: S.E. BURBANK	DRAWN BY: E.A. FIALA
	DESIGNED BY: E.A.FIALA	CHECKED BY: S.E. BURBANK
	TYPICAL SECTIONS (2 OF 3)	SHEET 5 OF 82

