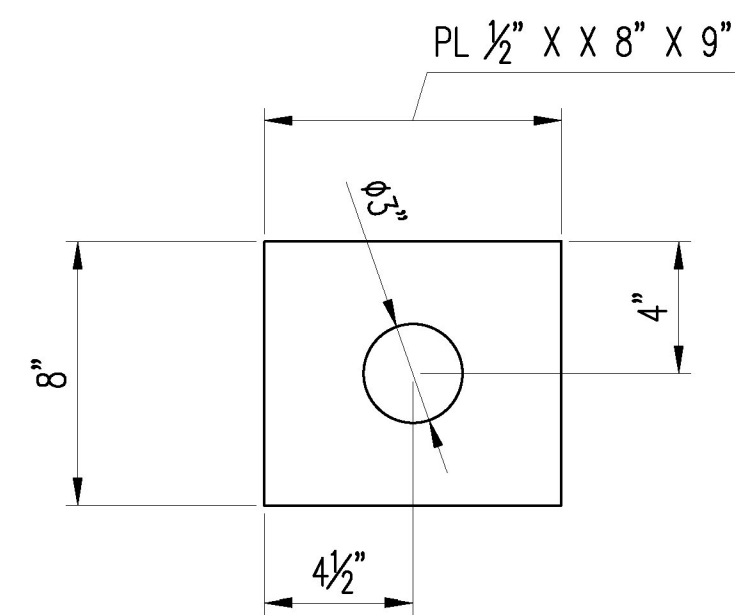


5 ~ ANCHOR PLATES ~ 102SA2 \triangle



5 ~ x11x

BILL OF MATERIAL

| BLOCK QTY. | BLOCK NO. | MARK | NO. PCS | SHAPE | LENGTH | | REMARKS |
|------------|-----------|--------|---------|--------------|--------|----|-------------|
| | | | | | FT | IN | |
| | 1 | 102SA2 | FIVE | ANCHOR PLATE | | | GALV |
| | 2 | x11x | 5 | PL 1/2 X 10 | 0 | 10 | GALV |
| | 3 | x10w | 20 | 3/4 DIA STUD | 0 | 10 | HEADED STUD |
| | 4 | | | | | | |
| | 5 | | | | | | |
| | 6 | | | | | | |
| | 7 | | | | | | |
| | 8 | | | | | | |
| | 9 | | | | | | |
| | 10 | | | | | | |
| | 11 | | | | | | |
| | 12 | | | | | | |
| | 13 | | | | | | |
| | 14 | | | | | | |
| | 15 | | | | | | |
| | 16 | | | | | | |
| | 17 | | | | | | |
| | 18 | | | | | | |
| | 19 | | | | | | |
| | 20 | | | | | | |
| | 21 | | | | | | |

Vermont Agency of Transportation
RECEIVED
 ON: April 26, 2016
 and Checked for
CONFORMANCE
 BY: Rob Young DATE: 05/13/2016

Approved
 Rejected
 Approved As Noted

This review is only for general conformance with the design concept and the information given in the Construction Documents. Corrections or comments made on the shop drawings during the review do not relieve the Contractor from compliance with the requirements of the Plans and Specifications. Review of a specific item shall not include review of an assembly of which an item is a component. The Contractor is responsible for dimensions to be confirmed and corrected at the job site; information that pertains solely to the fabrication process or to the means, methods, techniques, sequences and procedures of construction; coordination of the Work with that of other trades and performing all Work in a safe and satisfactory manner.

Date: 5/12/2016
 By: D. Kull

McFarland Johnson

| \triangle | 4/25 | REVISIONS PER APPROVAL | SLB | JEB | | |
|---|------|-------------------------|-----|----------|----------|-------------|
| REV. | DATE | REMARKS | DWN | CHK | APVL | SHOP |
| MATERIAL: | | SURFACE PREP. & PAINT: | | HOLES: | | SHOP BOLTS: |
| M270M-250(GR36) U.N.O. | | GALV. - PER STD. 726.08 | | AS NOTED | | AS NOTED |
| DESCRIPTION: EXPANION JOINT - ANCHOR PLATES | | | | | | |
| CASCO BAY STEEL STRUCTURES, INC. 1 WALLACE AVE. PHONE (207) 780-6722 SOUTH PORTLAND, ME 04106 FAX. (207) 780-6726 | | | | | | |
| STRUCTURE: BRIDGE NO. 177 VT 100 OVER MAD RIVER | | | | DRAWN: | DATE: | |
| STATE OF VERMONT AGENCY OF TRANS. | | | | SLB | 03/02/16 | |
| | | | | CHKD: | DATE: | |
| | | | | JEB | 03/02/16 | |
| LOCATION: WAITSFIELD, VT | | | | JOB NO. | DWG NO. | |
| PROJ NO. BRF 013-4(39) | | | | 651 | 103 | |
| CUSTOMER: A.L. ST. ONGE CONTRACTOR, INC. | | | | | REV. | A |