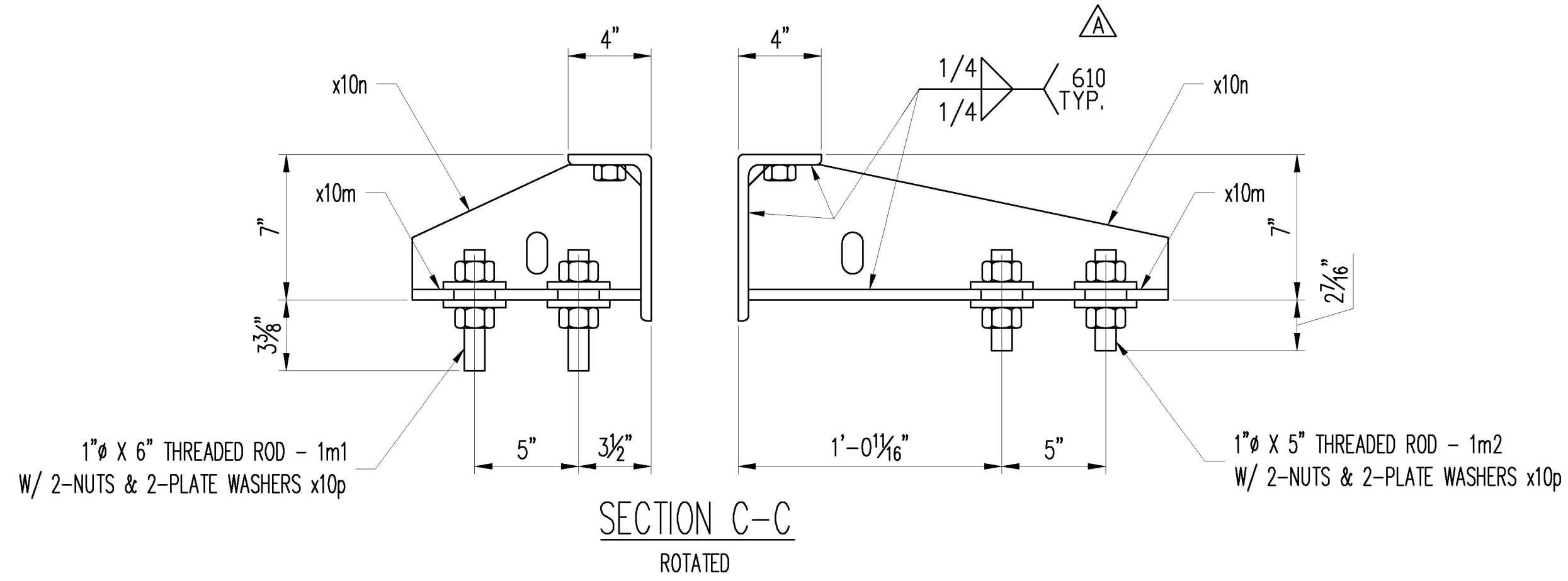


1 ~ LOWER JOINT SUB-ASSEMBLY ~ 102SA1



Vermont Agency of Transportation  
**RECEIVED**  
 ON: April 26, 2016  
 and Checked for  
**CONFORMANCE**  
 BY: Rob Young DATE: 05/13/2016

Approved	X Approved As Noted
Rejected	

This review is only for general conformance with the design concept and the information given in the Construction Documents. Corrections or comments made on the shop drawings during the review do not relieve the Contractor from compliance with the requirements of the Plans and Specifications. Review of a specific item shall not include review of an assembly of which an item is a component. The Contractor is responsible for dimensions to be confirmed and corrected at the job site; information that pertains solely to the fabrication process or to the means, methods, techniques, sequences and procedures of construction; coordination of the Work with that of other trades and performing all Work in a safe and satisfactory manner.

Date: 5/12/2016  
 By: D. Kull

**Mcfarland Johnson**

4/25	REVISIONS PER APPROVAL	SLB	JEB		
REV.	DATE	REMARKS	DWN	CHK	APVL
					SHOP
MATERIAL:		SURFACE PREP. & PAINT:		HOLES:	
M270M-250(GR36) U.N.O.		GALV. - PER STD. 726.08		AS NOTED	
				SHOP BOLTS:	
				AS NOTED	
DESCRIPTION: EXPANSION JOINT - ERECTION SHEET					
CASCO BAY STEEL STRUCTURES, INC.					
1 WALLACE AVE.		PHONE (207) 780-6722			
SOUTH PORTLAND, ME 04106		FAX. (207) 780-6726			
STRUCTURE: BRIDGE NO. 177			DRAWN: SLB		DATE: 03/02/16
VT 100 OVER MAD RIVER			CHKD: JEB		DATE: 03/02/16
STATE OF VERMONT AGENCY OF TRANS.					
LOCATION: WAITSFIELD, VT			JOB NO. 651		DWG NO. 102
PROJ NO. BRF 013-4(39)					REV. A
CUSTOMER: A.L. ST. ONGE CONTRACTOR, INC.					