

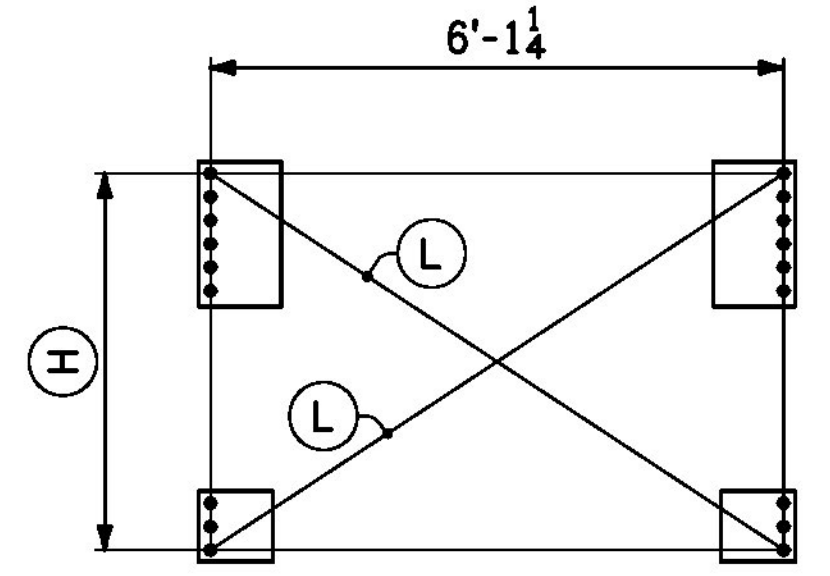
LINE	NO. OF PCS.	SHIP MARK	ASS'Y MARK	MATERIAL				REMARKS	LINE	NO. OF PCS.	SHIP MARK	ASS'Y MARK	MATERIAL				REMARKS				
				SHAPE	SECTION	LENGTH FT.	IN.						MATERIAL SPEC.	ITEM NO.	SHAPE	SECTION		LENGTH FT.	IN.	MATERIAL SPEC.	ITEM NO.
39	4	14CF6		CROSSFRAMES				341 lbs. ea.	1	8	14CF1		CROSSFRAMES				339 lbs. ea.				
40	8		a14	L	4 x 4 x 1/2	5	7 1/4	M270-50W	5-13	143 lbs.	2	16		a14	L	4 x 4 x 1/2	5	7 1/4	M270-50W	5-13	143 lbs.
41	8		k14	L	4 x 4 x 1/2	3	4 3/4	M270-50W	5-14	87 lbs.	3	16		b14	L	4 x 4 x 1/2	3	3 3/4	M270-50W	5-14	85 lbs.
42	8		t14	PL	1/2 x 10 1/2	1	6 1/2	M270-50W	5-15	55 lbs.	4	16		t14	PL	1/2 x 10 1/2	1	6 1/2	M270-50W	5-15	55 lbs.
43	8		v14	PL	1/2 x 9	0	9 1/2	M270-50W	5-16	24 lbs.	5	16		v14	PL	1/2 x 9	0	9 1/2	M270-50W	5-16	24 lbs.
44	4		w14	PL	1/2 x 12 1/2	1	6	M270-50W	5-17	32 lbs.	6	8		w14	PL	1/2 x 12 1/2	1	6	M270-50W	5-17	32 lbs.
45											7										
46	4	14CF7		CROSSFRAMES				341 lbs. ea.	8	4	14CF2		CROSSFRAMES								339 lbs. ea.
47	8		a14	L	4 x 4 x 1/2	5	7 1/4	M270-50W	5-13	143 lbs.	9	8		a14	L	4 x 4 x 1/2	5	7 1/4	M270-50W	5-13	143 lbs.
48	8		m14	L	4 x 4 x 1/2	3	5	M270-50W	5-14	87 lbs.	10	8		c14	L	4 x 4 x 1/2	3	4	M270-50W	5-14	85 lbs.
49	8		t14	PL	1/2 x 10 1/2	1	6 1/2	M270-50W	5-15	55 lbs.	11	8		t14	PL	1/2 x 10 1/2	1	6 1/2	M270-50W	5-15	55 lbs.
50	8		v14	PL	1/2 x 9	0	9 1/2	M270-50W	5-16	24 lbs.	12	8		v14	PL	1/2 x 9	0	9 1/2	M270-50W	5-16	24 lbs.
51	4		w14	PL	1/2 x 12 1/2	1	6	M270-50W	5-17	32 lbs.	13	4		w14	PL	1/2 x 12 1/2	1	6	M270-50W	5-17	32 lbs.
52											14										
53	4	14CF8		CROSSFRAMES				342 lbs. ea.	15	4	14CF3		CROSSFRAMES								340 lbs. ea.
54	8		a14	L	4 x 4 x 1/2	5	7 1/4	M270-50W	5-13	143 lbs.	16	8		a14	L	4 x 4 x 1/2	5	7 1/4	M270-50W	5-13	143 lbs.
55	8		n14	L	4 x 4 x 1/2	3	5 1/4	M270-50W	5-14	88 lbs.	17	8		d14	L	4 x 4 x 1/2	3	4 1/4	M270-50W	5-14	86 lbs.
56	8		t14	PL	1/2 x 10 1/2	1	6 1/2	M270-50W	5-15	55 lbs.	18	8		t14	PL	1/2 x 10 1/2	1	6 1/2	M270-50W	5-15	55 lbs.
57	8		v14	PL	1/2 x 9	0	9 1/2	M270-50W	5-16	24 lbs.	19	8		v14	PL	1/2 x 9	0	9 1/2	M270-50W	5-16	24 lbs.
58	4		w14	PL	1/2 x 12 1/2	1	6	M270-50W	5-17	32 lbs.	20	4		w14	PL	1/2 x 12 1/2	1	6	M270-50W	5-17	32 lbs.
59											21										
60	2	14CF9		CROSSFRAMES				342 lbs. ea.	22	4	14CF4		CROSSFRAMES								340 lbs. ea.
61	4		a14	L	4 x 4 x 1/2	5	7 1/4	M270-50W	5-13	143 lbs.	23	8		a14	L	4 x 4 x 1/2	5	7 1/4	M270-50W	5-13	143 lbs.
62	4		p14	L	4 x 4 x 1/2	3	5 3/8	M270-50W	5-14	88 lbs.	24	8		f14	L	4 x 4 x 1/2	3	4 3/8	M270-50W	5-14	86 lbs.
63	4		t14	PL	1/2 x 10 1/2	1	6 1/2	M270-50W	5-15	55 lbs.	25	8		t14	PL	1/2 x 10 1/2	1	6 1/2	M270-50W	5-15	55 lbs.
64	4		v14	PL	1/2 x 9	0	9 1/2	M270-50W	5-16	24 lbs.	26	8		v14	PL	1/2 x 9	0	9 1/2	M270-50W	5-16	24 lbs.
65	2		w14	PL	1/2 x 12 1/2	1	6	M270-50W	5-17	32 lbs.	27	4		w14	PL	1/2 x 12 1/2	1	6	M270-50W	5-17	32 lbs.
66											28										
67											29	2	14CF5		CROSSFRAMES						340 lbs. ea.
68											30	4		a14	L	4 x 4 x 1/2	5	7 1/4	M270-50W	5-13	143 lbs.
69											31	4		g14	L	4 x 4 x 1/2	3	4 1/2	M270-50W	5-14	86 lbs.
70											32	4		t14	PL	1/2 x 10 1/2	1	6 1/2	M270-50W	5-15	55 lbs.
71											33	4		v14	PL	1/2 x 9	0	9 1/2	M270-50W	5-16	24 lbs.
72											34	2		w14	PL	1/2 x 12 1/2	1	6	M270-50W	5-17	32 lbs.
73											35										
74											36										
75											37										
76											38										

INTERMEDIATE CROSSFRAMES

MARK	No. REQ'D.	(A)	(B)	(C)	(D)	(E)	(1)	
K1	14CF1	8	3'-2 3/8	2'-3 3/8	4'-5 1/8	3'-3 3/4	11 7/16	b14
K2	14CF2	4	3'-2 5/8	2'-3 3/8	4'-5 1/4	3'-4	11 3/8	c14
K3	14CF3	4	3'-2 7/8	2'-3 5/8	4'-5 7/8	3'-4 1/4	11 5/8	d14
K4	14CF4	4	3'-3 3/16	2'-3 15/16	4'-5 5/8	3'-4 3/8	11 3/8	f14
K5	14CF5	2	3'-3 7/16	2'-4 3/16	4'-5 13/16	3'-4 1/2	11 1/8	g14
K6	14CF6	4	3'-3 3/4	2'-4 1/2	4'-6 1/16	3'-4 3/4	11 1/16	k14
K7	14CF7	4	3'-4 1/8	2'-4 7/8	4'-6 5/16	3'-5	10 15/16	m14
K8	14CF8	4	3'-4 3/8	2'-5 1/8	4'-6 1/2	3'-5 1/4	10 7/8	n14
K9	14CF9	2	3'-4 9/16	2'-5 5/16	4'-6 5/8	3'-5 3/8	10 13/16	p14

NOTES:

1. FOR GENERAL NOTES, SEE SHT. GN1.



CROSSFRAME FIXTURE LAYOUT

NOTE: HOLES SHOWN ARE WIDEST DIMENSIONS

MARK	(H)	(L)
14CF1	4'-0 1/8	7'-3 5/8
14CF2	4'-0 3/8	7'-3 13/16
14CF3	4'-0 5/8	7'-3 15/16
14CF4	4'-0 15/16	7'-4 1/16
14CF5	4'-1 3/16	7'-4 1/4
14CF6	4'-1 1/2	7'-4 7/16
14CF7	4'-1 7/8	7'-4 5/8
14CF8	4'-2 1/8	7'-4 3/4
14CF9	4'-2 5/16	7'-4 7/8

Approved _____ X Approved As Noted _____
 Rejected _____

This review is only for general conformance with the design concept and the information given in the Construction Documents. Corrections or comments made on the shop drawings during the review do not relieve the Contractor from compliance with the requirements of the Plans and Specifications. Review of a specific item shall not include review of an assembly of which an item is a component. The Contractor is responsible for dimensions to be confirmed and corrected at the job site; information that pertains solely to the fabrication process or to the means, methods, techniques, sequences and procedures of construction; coordination of the Work with that of other trades and performing all Work in a safe and satisfactory manner.

Date: 4/7/2016
 By: D. Kull

McFarland Johnson

Vermont Agency of Transportation
RECEIVED
 CK'D BY _____ OK'D BY Rob Young
 April 4, 2016
 RESUBMIT NO Approved As Noted
 BY Rob Young DATE 04/08/2016

NO.	DATE	REMARKS	BY
REVISIONS			
CASCO BAY STEEL STRUCTURES		CASCO BAY STEEL STRUCTURES ONE WALLACE AVENUE SOUTH PORTLAND, ME 04106 PHONE: 207-780-8722 FAX: 207-780-8726	
STRUCTURE <u>VT 100 OVER MAD RIVER</u>			
LOCATION <u>TOWN OF WAITSFIELD, VERMONT</u>			
PROJECT NO. <u>PROJECT NO. BRP 013-4(39) BRIDGE NO. 177</u>			
ENGINEER <u>McFARLAND JOHNSON</u>			
CUSTOMER <u>AL. ST. ONGE CONTRACTOR, INC.</u>			
ITEM <u>INTERMEDIATE CROSSFRAMES</u>			
SURFACE PREP. <u>SSPC-SP10</u> OPEN HOLES <u>1 1/8"</u>			
PAINT <u>NONE</u>			
APPROVAL	DRAWN <u>EF</u> 1-29-16	SHEET NO. <u>14</u>	JOB NO. <u>651</u>
SHOP	CHECKED <u>FM</u> 3-10-16		