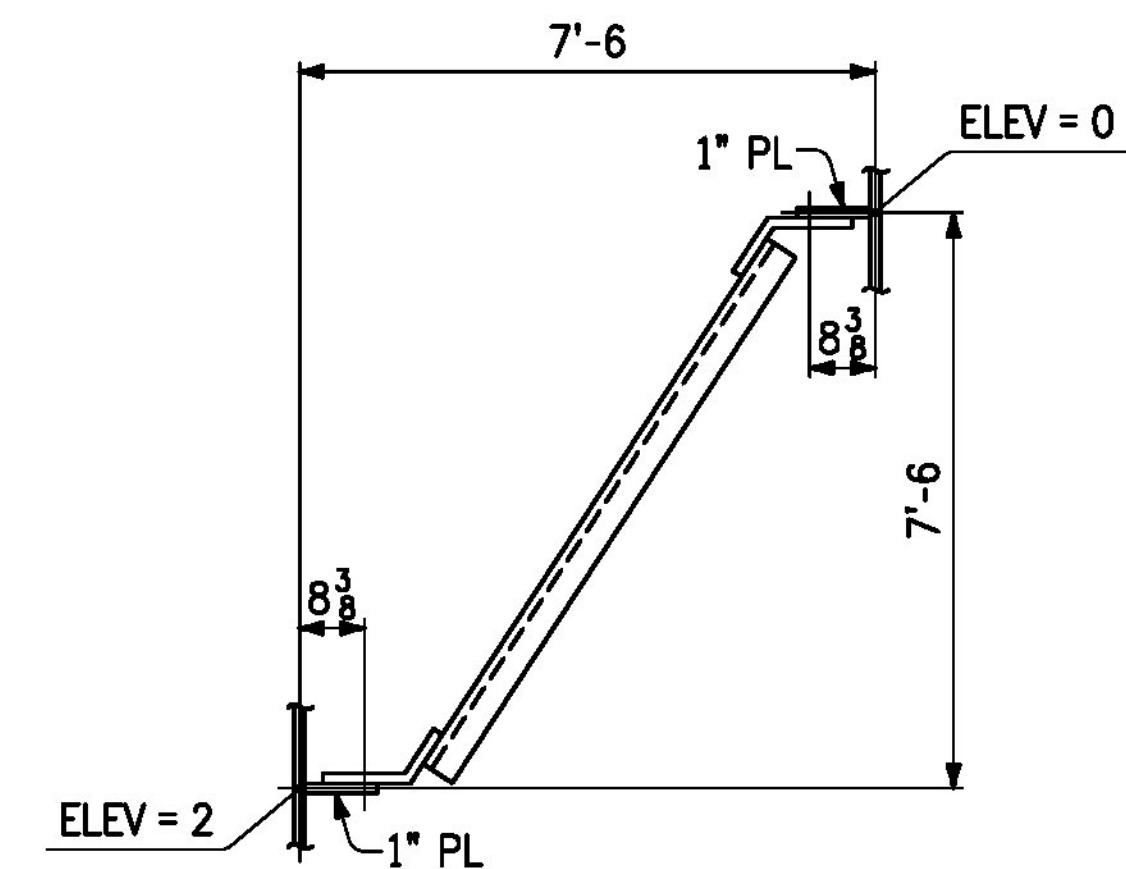


2 ~ END CROSSFRAMES ~ 12CF1
(ABUT. 2)

LINE	NO. OF PCS.	SHIP MARK	ASS'Y MARK	MATERIAL					REMARKS	
				SHAPE	SECTION	LENGTH FT.	IN.	MATERIAL SPEC.		ITEM NO.
1	2	12CF1		CROSSFRAMES	8 x 22.8	9	0 1/4	M270-50W	5 3	648 lbs. ea.
2	2		a12	MC						206 lbs.
3	2		b12	L	4 x 4 x 1/2	9	0 1/4	M270-50W	5 2	115 lbs.
4	2		c12	L	4 x 4 x 1/2	4	6 1/2	M270-50W	5 4	58 lbs.
5	2		d12	L	4 x 4 x 1/2	4	7 1/2	M270-50W	5 4	59 lbs.
6	4		f12	PL	3/4 x 12	0	11 5/8	M270-50W	5 6	BENT 59 lbs.
7	4		g12	PL	3/4 x 18	1	0 5/8	M270-50W	5 8	BENT 97 lbs.
8	2		k12	PL	1/2 x 14	2	3	M270-50W	5 9	54 lbs.
9										
10										
11										
12										
13										
14										
15										
16										
17										
18										
19										
20										
21										
22										
23										
24										
25										



CROSSFRAME ASSEMBLY SKETCH

NO.	DATE	REVISIONS	BY
REVISIONS			
CASCO BAY STEEL STRUCTURES		CASCO BAY STEEL STRUCTURES ONE WALLACE AVENUE SOUTH PORTLAND, ME 04106 PHONE: 207-780-8722 FAX: 207-780-8726	
STRUCTURE <u>VT 100 OVER MAD RIVER</u>			
LOCATION <u>TOWN OF WAITSFIELD, VERMONT</u>			
PROJECT NO. <u>PROJECT NO. BRP 013-4(39) BRIDGE NO. 177</u>			
ENGINEER <u>MCFARLAND JOHNSON</u>			
CUSTOMER <u>A.L. ST. ONGE CONTRACTOR, INC.</u>			
ITEM <u>END CROSSFRAMES AT ABUT. 2</u>			
SURFACE PREP. <u>SSPC-SP10</u> OPEN HOLES <u>1/8"</u>			
PAINT <u>NONE</u>			
APPROVAL	DRAWN <u>EF</u> 1-28-16	SHEET NO. <u>12</u>	JOB NO. <u>651</u>
SHOP	CHECKED <u>FM</u> 3-10-16		

1500-13

CF-ABUT2-1500A

Approved
 Rejected

Approved As Noted

This review is only for general conformance with the design concept and the information given in the Construction Documents. Corrections or comments made on the shop drawings during the review do not relieve the Contractor from compliance with the requirements of the Plans and Specifications. Review of a specific item shall not include review of an assembly of which an item is a component. The Contractor is responsible for dimensions to be confirmed and corrected at the job site; information that pertains solely to the fabrication process or to the means, methods, techniques, sequences and procedures of construction; coordination of the Work with that of other trades and performing all Work in a safe and satisfactory manner.

Date: 4/7/2016
 By: D. Kull

Vermont Agency of Transportation
RECEIVED
 CK'D BY _____ OK'D BY Rob Young
April 4, 2016
 RESUBMIT NO Approved As Noted
 BY Rob Young DATE 04/08/2016

NOTES:

- FOR GENERAL NOTES, SEE SHIT. GN1.