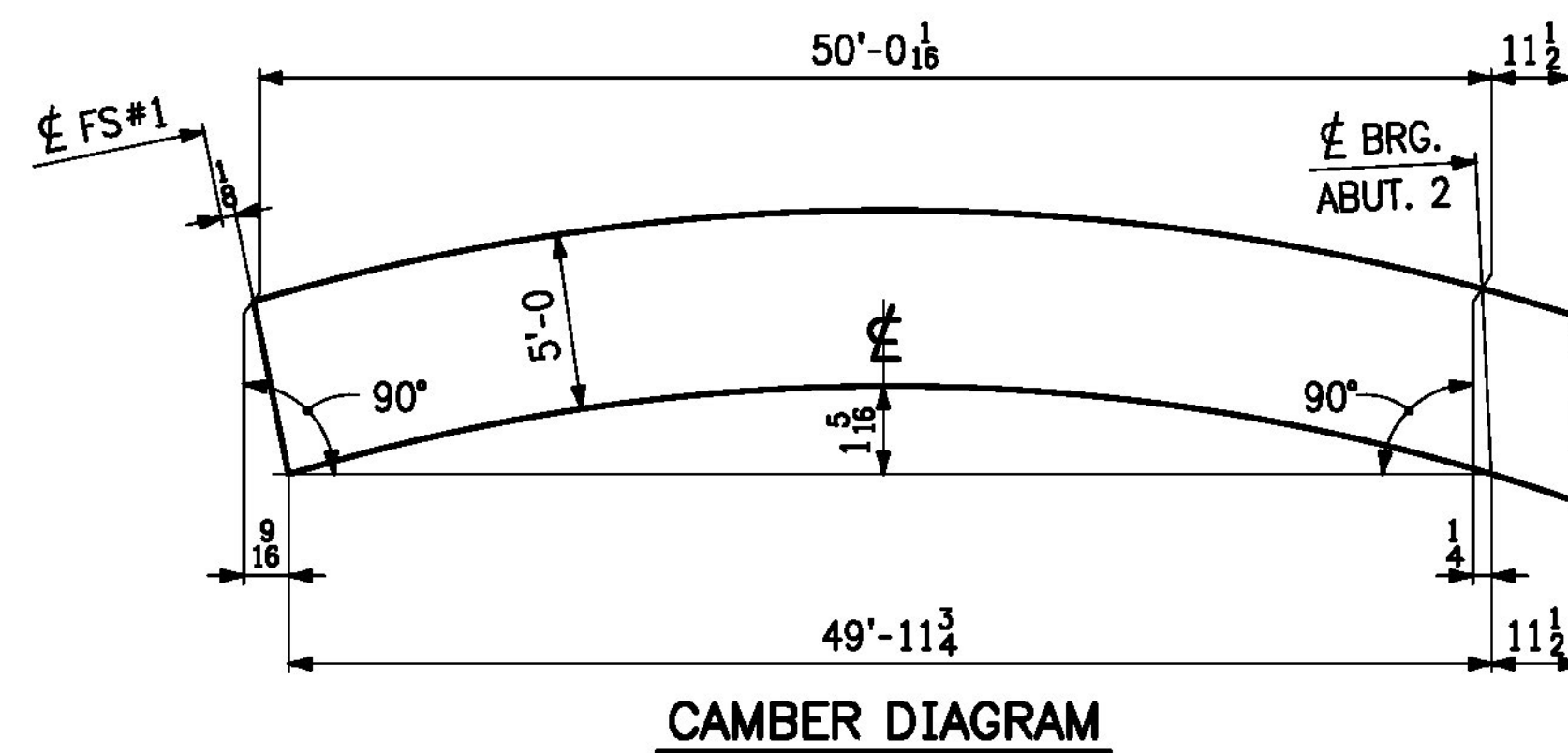
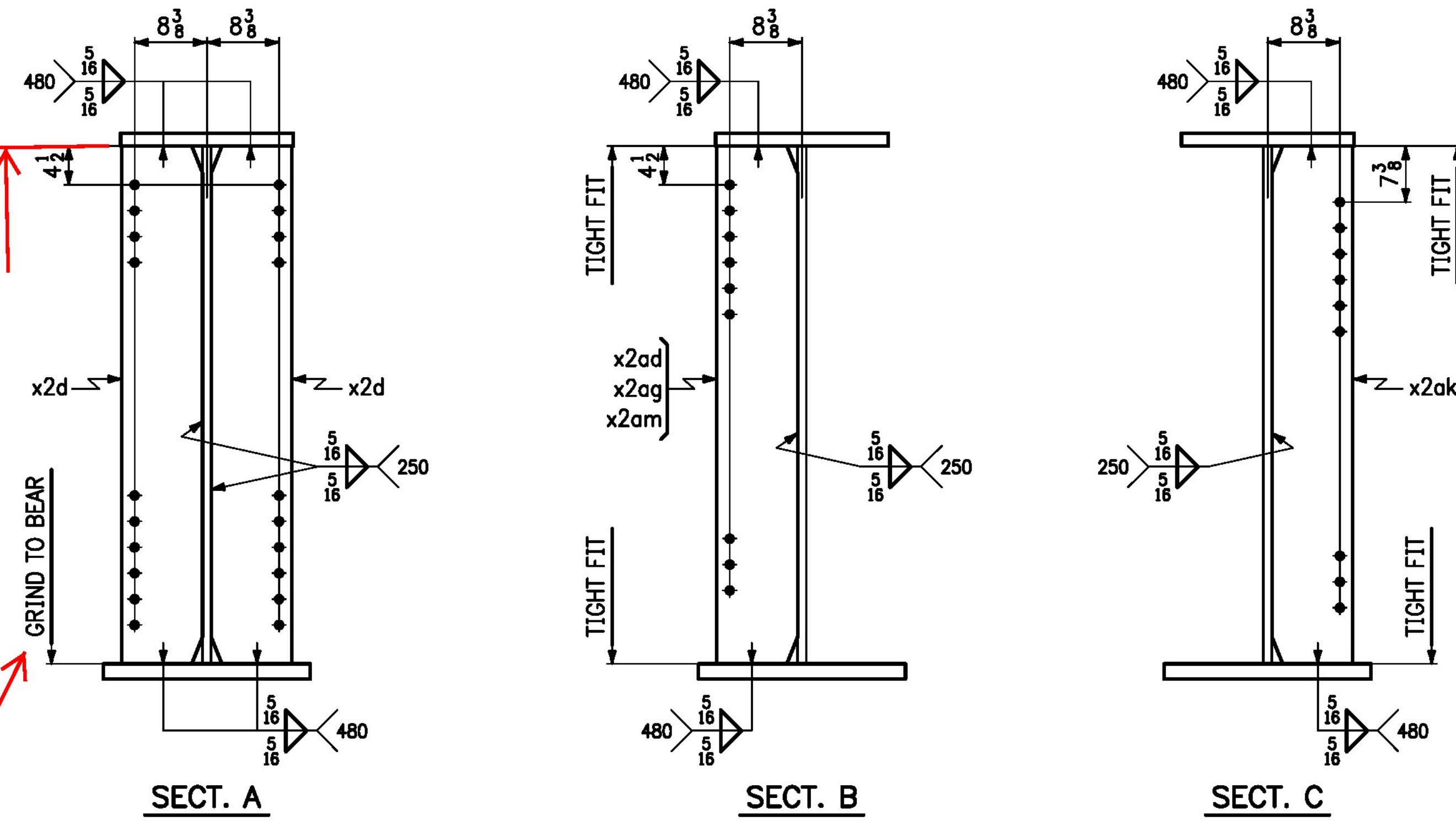


Tight fit (typ)

Typ bottom flange



LINE	NO. OF PCS.	SHIP MARK	ASS'Y MARK	MATERIAL					REMARKS	
				SHAPE	SECTION	LENGTH FT.	IN.	MATERIAL SPEC.		ITEM NO.
1	1	7G2B		GIRDER					18,360 lbs.	
2	1		wa	PL	3/4 x 60	50	11 1/8	M270-50W12	1/24	7807 lbs.
3	1		ta	PL	1 1/2 x 20	4	11 1/8	M270-50W	2/1	509 lbs.
4	1		tb	PL	1 1/2 x 20	45	11 1/8	M270-50W	2/3	3911 lbs.
5	1		ba	PL	1 1/2 x 24	4	11 1/8	M270-50W12	2/25	713 lbs.
6	1		bb	PL	1 1/2 x 24	45	11 1/8	M270-50W12	2/27	4691 lbs.
7										
8	2		x2d	PL	1 x 9 1/2	5	0	M270-50W	4/2	GIE 324 lbs.
9	1		x2ad	PL	1/2 x 9 1/2	5	0	M270-50W	4/3	81 lbs.
10	1		x2ag	PL	1/2 x 9 1/2	5	0	M270-50W	4/3	81 lbs.
11	2		x2ak	PL	1/2 x 9 1/2	5	0	M270-50W	4/3	162 lbs.
12	1		x2am	PL	1/2 x 9 1/2	5	0	M270-50W	4/3	81 lbs.
13										
14										
15										
16										
17										
18										
19										
20										
21										
22										
23										
24										
25										

Vermont Agency of Transportation
RECEIVED

CK'D BY _____ OK'D BY Rob Young

April 4, 2016

RESUBMIT NO _____ Approved As Noted
BY Rob Young DATE 04/08/2016

Approved
 Rejected

 Approved As Noted

This review is only for general conformance with the design concept and the information given in the Construction Documents. Corrections or comments made on the shop drawings during the review do not relieve the Contractor from compliance with the requirements of the Plans and Specifications. Review of a specific item shall not include review of an assembly of which an item is a component. The Contractor is responsible for dimensions to be confirmed and corrected at the job site; information that pertains solely to the fabrication process or to the means, methods, techniques, sequences and procedures of construction; coordination of the Work with that of other trades and performing all Work in a safe and satisfactory manner.

Date: 4/7/2016
 By: D. Kull

NO.	DATE	REVISIONS	BY
REVISIONS			
		CASCO BAY STEEL STRUCTURES ONE WALLACE AVENUE PHONE: 207-780-6722 SOUTH PORTLAND, ME 04106 FAX: 207-780-6726	
STRUCTURE <u>VT 100 OVER MAD RIVER</u>			
LOCATION <u>TOWN OF WAITSFIELD, VERMONT</u>			
PROJECT NO. <u>PROJECT NO. BRP 013-4(39) BRIDGE NO. 177</u>			
ENGINEER <u>MCFARLAND JOHNSON</u>			
CUSTOMER <u>AL. ST. ONGE CONTRACTOR, INC.</u>			
ITEM <u>GIRDER ~ 7G2B</u>			
SURFACE PREP. <u>SSPC-SP10</u> OPEN HOLES <u>1 1/2"</u>			
PAINT <u>NONE</u>			
APPROVAL	DRAWN <u>VHM</u>	1-28-16	SHEET NO. <u>7B</u>
SHOP	CHECKED <u>FM</u>	3-9-16	JOB NO. <u>651</u>