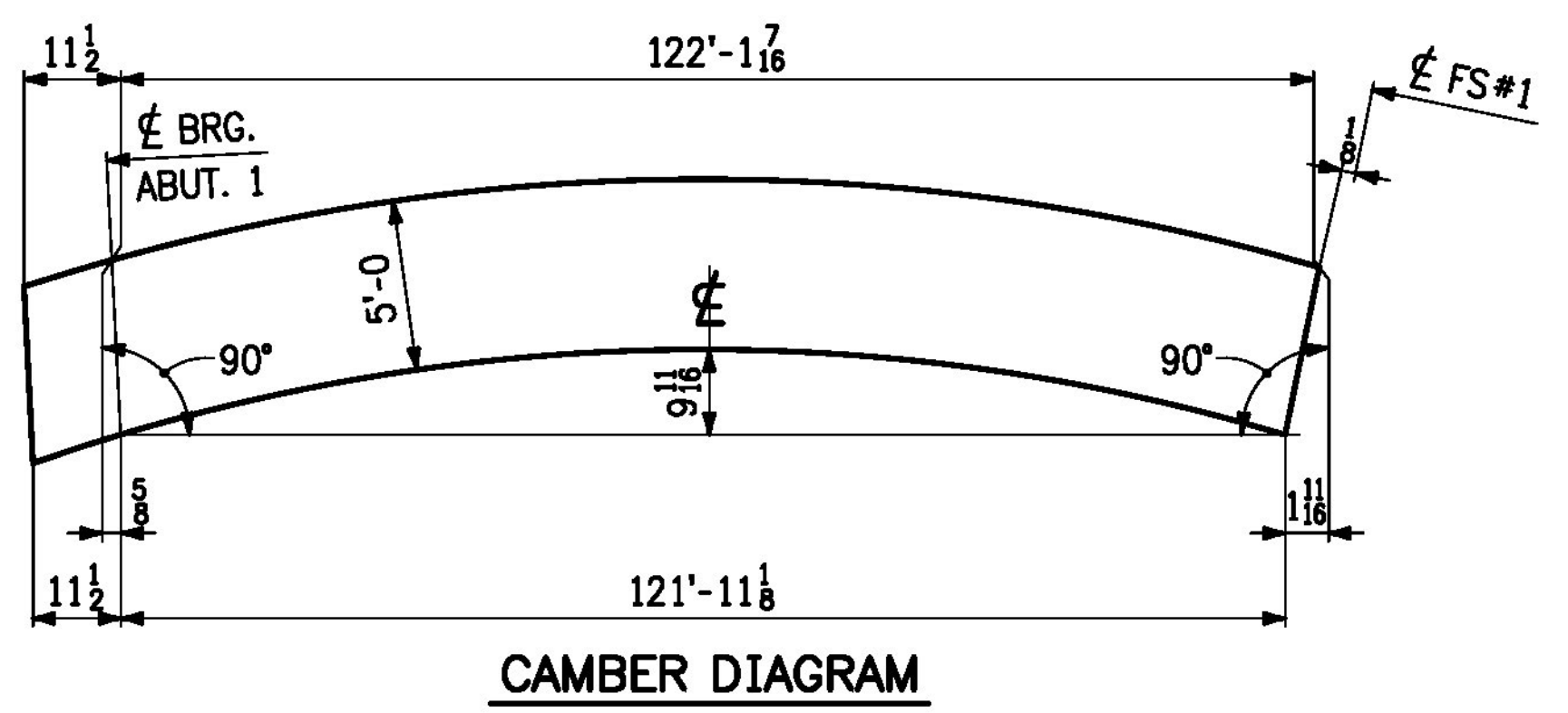
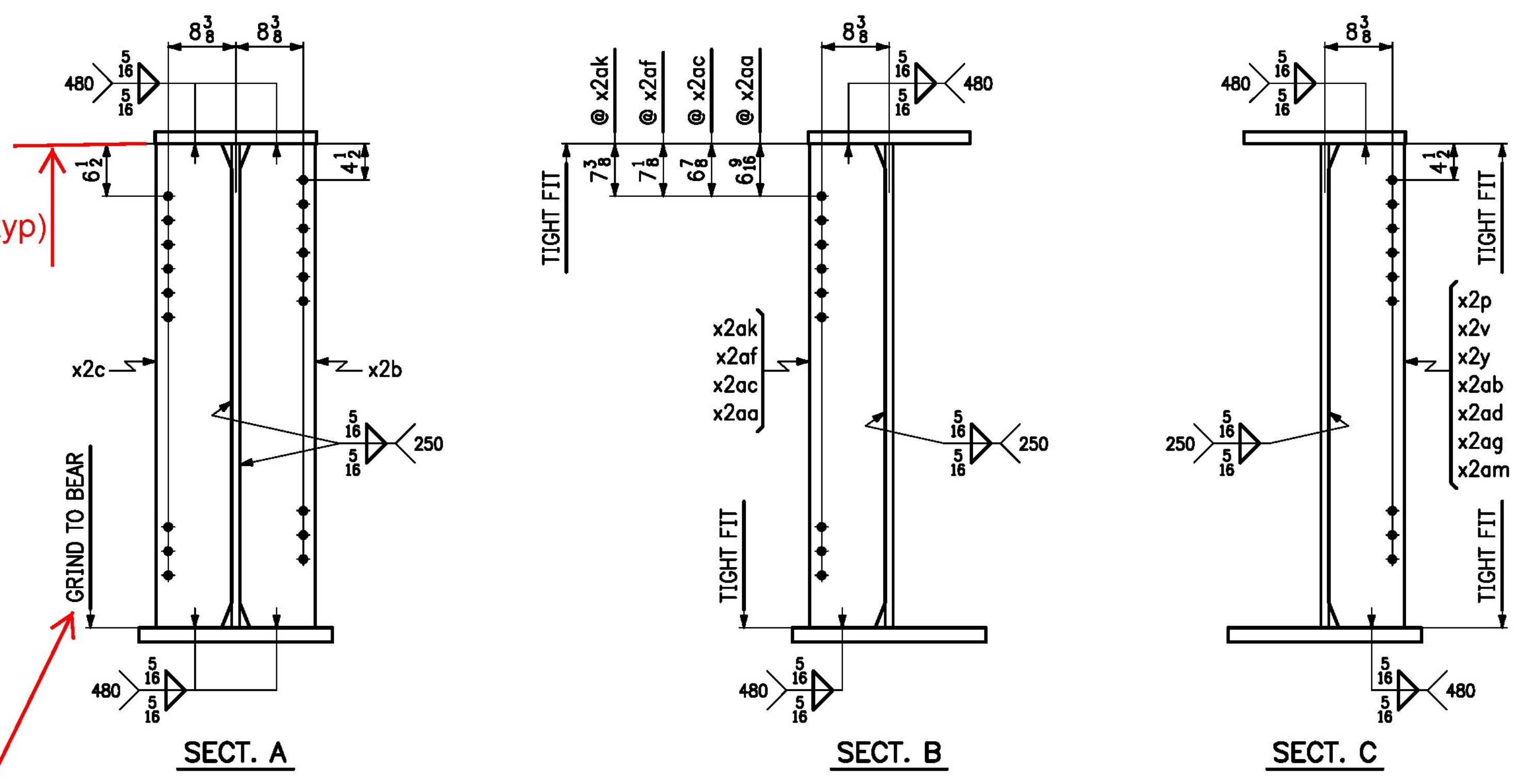


Tight fit (typ)

Typ bottom flange



LINE	NO. OF PCS.	SHIP MARK	ASS'Y MARK	MATERIAL						
				SHAPE	SECTION	LENGTH FT.	IN.	MATERIAL SPEC.	ITEM NO.	REMARKS
1	1	4G4A		GIRDER						48,635 lbs.
2	1		wa	PL	3/4 x 60	43	11 1/8	M270-50WT2	1-12	6737 lbs.
3	1		wb	PL	3/4 x 60	79	1 1/2	M270-50WT2	1-11	12,116 lbs.
4	1		ta	PL	1 1/4 x 20	46	1 1/8	M270-50W	1-23	3921 lbs.
5	1		tb	PL	1 1/2 x 20	76	1 1/8	M270-50W	1-21	7859 lbs.
6	1		ba	PL	1 1/2 x 24	45	10 3/8	M270-50WT2	1-19	5622 lbs.
7	1		bb	PL	1 1/4 x 24	76	11 7/8	M270-50WT2	1-17	11,003 lbs.
8										
9	1		x2b	PL	1 x 9 1/2	5	0	M270-50W	4-2	G1E 162 lbs.
10	1		x2c	PL	1 x 9 1/2	5	0	M270-50W	4-2	G1E 162 lbs.
11	1		x2p	PL	1/2 x 9 1/2	5	0	M270-50W	4-3	81 lbs.
12	1		x2v	PL	1/2 x 9 1/2	5	0	M270-50W	4-3	81 lbs.
13	1		x2y	PL	1/2 x 9 1/2	5	0	M270-50W	4-3	81 lbs.
14	1		x2aa	PL	1/2 x 9 1/2	5	0	M270-50W	4-3	81 lbs.
15	1		x2ab	PL	1/2 x 9 1/2	5	0	M270-50W	4-3	81 lbs.
16	1		x2ac	PL	1/2 x 9 1/2	5	0	M270-50W	4-3	81 lbs.
17	1		x2ad	PL	1/2 x 9 1/2	5	0	M270-50W	4-3	81 lbs.
18	1		x2af	PL	1/2 x 9 1/2	5	0	M270-50W	4-3	81 lbs.
19	1		x2ag	PL	1/2 x 9 1/2	5	0	M270-50W	4-3	81 lbs.
20	3		x2ak	PL	1/2 x 9 1/2	5	0	M270-50W	4-3	243 lbs.
21	1		x2am	PL	1/2 x 9 1/2	5	0	M270-50W	4-3	81 lbs.
22										
23										
24										
25										

NO.	DATE	REVISIONS	BY
REVISIONS			
		<b>CASCO BAY STEEL STRUCTURES</b> ONE WALLACE AVENUE SOUTH PORTLAND, ME 04106 PHONE: 207-780-6722 FAX: 207-780-6726	
STRUCTURE <u>VT 100 OVER MAD RIVER</u>			
LOCATION <u>TOWN OF WAITSFIELD, VERMONT</u>			
PROJECT NO. <u>PROJECT NO. BRP 013-4(39)</u> BRIDGE NO. <u>177</u>			
ENGINEER <u>MCFARLAND JOHNSON</u>			
CUSTOMER <u>AL. ST. ONGE CONTRACTOR, INC.</u>			
ITEM <u>GIRDER ~ 4G4A</u>			
SURFACE PREP. <u>SSPC-SP10</u> OPEN HOLES <u>1 1/8</u>			
PAINT <u>NONE</u>			
APPROVAL	DRAWN <u>VHM</u>	1-27-16	SHEET NO. <u>4B</u>
SHOP	CHECKED <u>FM</u>	3-9-16	JOB NO. <u>651</u>

Approved       Approved As Noted  
 Rejected

This review is only for general conformance with the design concept and the information given in the Construction Documents. Corrections or comments made on the shop drawings during the review do not relieve the Contractor from compliance with the requirements of the Plans and Specifications. Review of a specific item shall not include review of an assembly of which an item is a component. The Contractor is responsible for dimensions to be confirmed and corrected at the job site; information that pertains solely to the fabrication process or to the means, methods, techniques, sequences and procedures of construction; coordination of the Work with that of other trades and performing all Work in a safe and satisfactory manner.

Date 4/7/2016  
 By D. Kull

**Vermont Agency of Transportation**  
**RECEIVED**  
 CK'D BY \_\_\_\_\_ OK'D BY Rob Young  
 April 4, 2016  
 RESUBMIT NO \_\_\_\_\_ Approved AsNoted  
 BY Rob Young DATE 04/08/2016