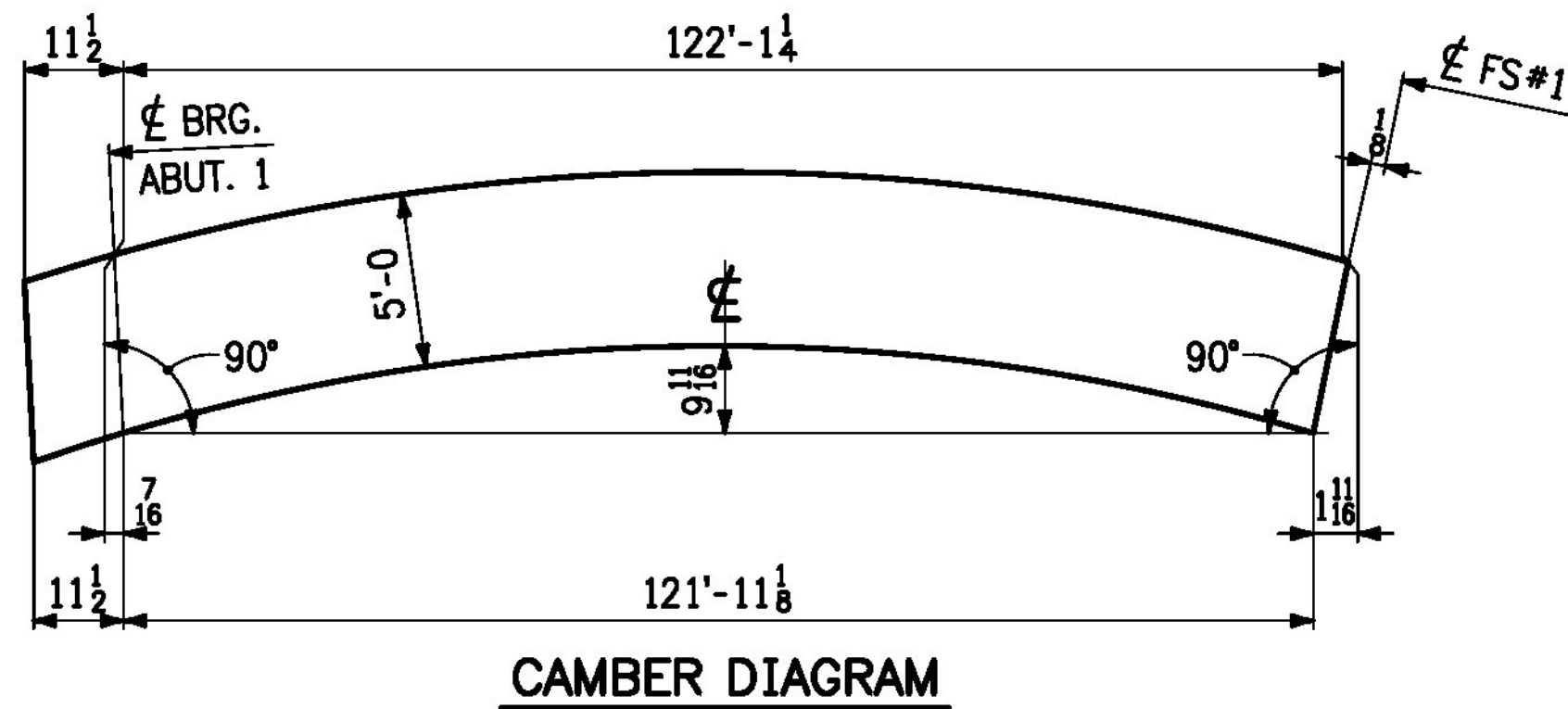
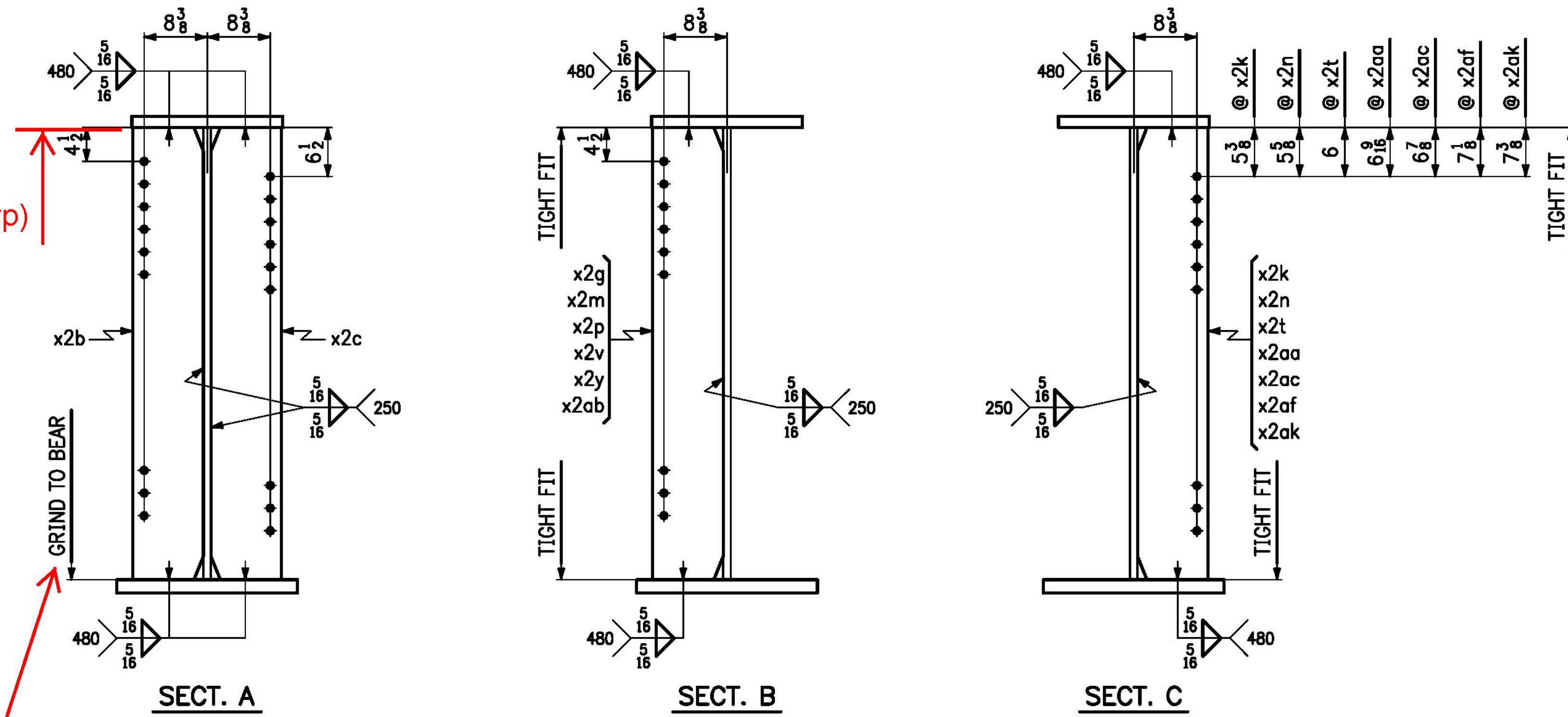


Tight fit (typ)

Typ bottom flange



Vermont Agency of Transportation  
**RECEIVED**

CK'D BY \_\_\_\_\_ OK'D BY Rob Young

April 4, 2016

RESUBMIT NO Approved AsNoted  
BY Rob Young DATE 04/08/2016

Approved \_\_\_\_\_ X Approved As Noted  
Rejected \_\_\_\_\_

This review is only for general conformance with the design concept and the information given in the Construction Documents. Corrections or comments made on the shop drawings during the review do not relieve the Contractor from compliance with the requirements of the Plans and Specifications. Review of a specific item shall not include review of an assembly of which an item is a component. The Contractor is responsible for dimensions to be confirmed and corrected at the job site; information that pertains solely to the fabrication process or to the means, methods, techniques, sequences and procedures of construction; coordination of the Work with that of other trades and performing all Work in a safe and satisfactory manner.

McFarland Johnson

Date 4/7/2016

By D. Kull

LINE	NO. OF PCS.	SHIP MARK	ASS'Y MARK	MATERIAL					REMARKS	
				SHAPE	SECTION	LENGTH FT.	IN.	MATERIAL SPEC.		ITEM NO.
1	1	2G2A		GIRDER					48,633 lbs.	
2	1		wa	PL	3/4 x 60	43	11 11/16	M270-50WT2	1 12	6737 lbs.
3	1		wb	PL	3/4 x 60	79	1 1/2	M270-50WT2	1 11	12,116 lbs.
4	1		ta	PL	1 1/2 x 20	46	0 7/8	M270-50W	1 23	3919 lbs.
5	1		tb	PL	1 1/2 x 20	76	11 1/8	M270-50W	1 21	7859 lbs.
6	1		ba	PL	1 1/2 x 24	45	10 3/8	M270-50WT2	1 19	5622 lbs.
7	1		bb	PL	1 1/2 x 24	76	11 1/8	M270-50WT2	1 17	11,003 lbs.
8										
9	1		x2b	PL	1 x 9 1/2	5	0	M270-50W	4 2	G1E 162 lbs.
10	1		x2c	PL	1 x 9 1/2	5	0	M270-50W	4 2	G1E 162 lbs.
11	1		x2g	PL	1/2 x 9 1/2	5	0	M270-50W	4 3	81 lbs.
12	1		x2k	PL	1/2 x 9 1/2	5	0	M270-50W	4 3	81 lbs.
13	1		x2m	PL	1/2 x 9 1/2	5	0	M270-50W	4 3	81 lbs.
14	1		x2n	PL	1/2 x 9 1/2	5	0	M270-50W	4 3	81 lbs.
15	1		x2p	PL	1/2 x 9 1/2	5	0	M270-50W	4 3	81 lbs.
16	1		x2t	PL	1/2 x 9 1/2	5	0	M270-50W	4 3	81 lbs.
17	1		x2v	PL	1/2 x 9 1/2	5	0	M270-50W	4 3	81 lbs.
18	1		x2y	PL	1/2 x 9 1/2	5	0	M270-50W	4 3	81 lbs.
19	1		x2aa	PL	1/2 x 9 1/2	5	0	M270-50W	4 3	81 lbs.
20	1		x2ab	PL	1/2 x 9 1/2	5	0	M270-50W	4 3	81 lbs.
21	1		x2ac	PL	1/2 x 9 1/2	5	0	M270-50W	4 3	81 lbs.
22	1		x2af	PL	1/2 x 9 1/2	5	0	M270-50W	4 3	81 lbs.
23	1		x2ak	PL	1/2 x 9 1/2	5	0	M270-50W	4 3	81 lbs.
24										
25										

NO.	DATE	REMARKS	BY
REVISIONS			
		<b>CASCO BAY STEEL STRUCTURES</b> ONE WALLACE AVENUE PHONE: 207-780-6722 SOUTH PORTLAND, ME 04106 FAX: 207-780-6726	
STRUCTURE <u>VT 100 OVER MAD RIVER</u>			
LOCATION <u>TOWN OF WAITSFIELD, VERMONT</u>			
PROJECT NO. <u>PROJECT NO. BRP 013-4(39) BRIDGE NO. 177</u>			
ENGINEER <u>MCFARLAND JOHNSON</u>			
CUSTOMER <u>AL. ST. ONGE CONTRACTOR, INC.</u>			
ITEM <u>GIRDER ~ 2G2A</u>			
SURFACE PREP. <u>SSPC-SP10</u>		OPEN HOLES <u>1 1/8</u>	
PAINT <u>NONE</u>			
APPROVAL	DRAWN <u>VHM</u>	1-27-16	SHEET NO. <u>2B</u>
SHOP	CHECKED <u>FM</u>	3-9-16	JOB NO. <u>651</u>