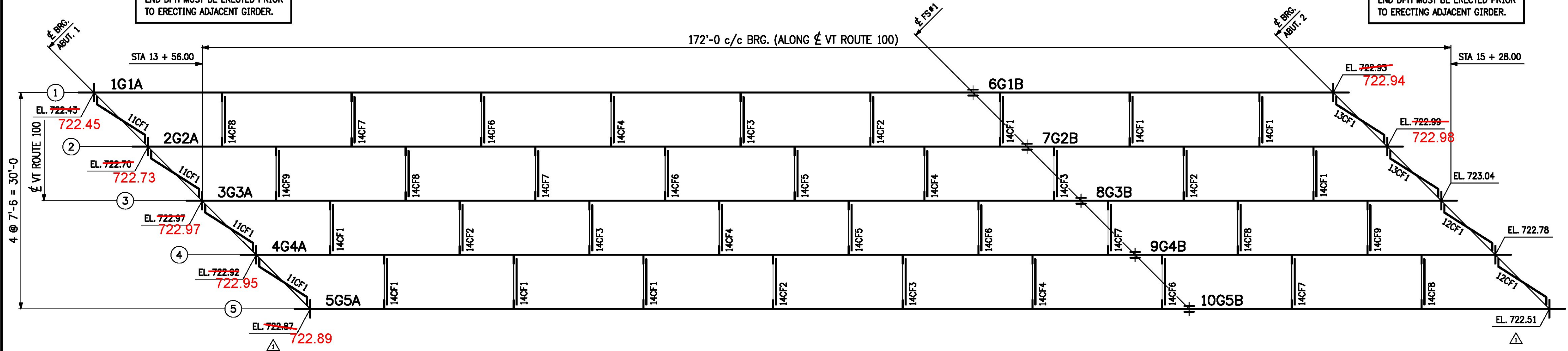


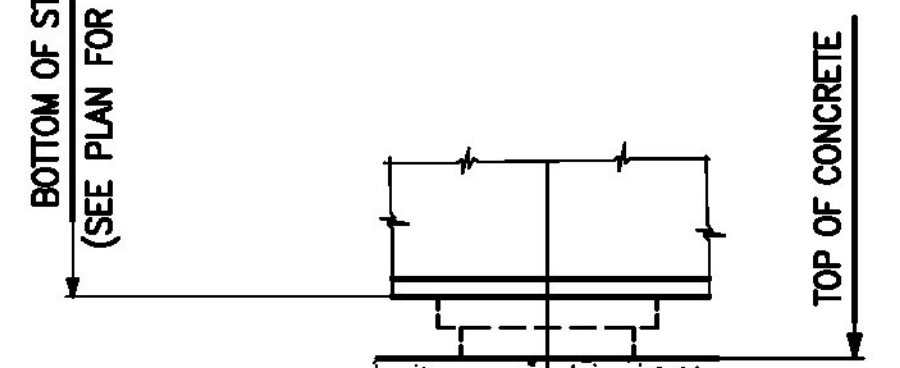
**ERECTOR NOTE:**  
END DPH MUST BE ERECTED PRIOR TO ERECTING ADJACENT GIRDER.

**ERECTOR NOTE:**  
END DPH MUST BE ERECTED PRIOR TO ERECTING ADJACENT GIRDER.



**ERECTION PLAN**

**CONTRACTOR NOTE:**  
ELEVATIONS ARE GIVEN TO BOTTOM OF STEEL - DO NOT POUR TO FINAL ELEVATIONS WITHOUT VERIFICATION OF BEARING HEIGHTS AND BRIDGE SEATS.



**TYP. BRG. ELEVATION**  
(@ ABUTS. 1 & 2)

**NOTES:**

1. FOR GENERAL NOTES, SEE DWG. GN1.
2. ALL DIMENSIONS ARE GIVEN IN A HORIZONTAL PLANE.

Approved \_\_\_\_\_ X Approved As Noted \_\_\_\_\_  
Rejected \_\_\_\_\_

This review is only for general conformance with the design concept and the information given in the Construction Documents. Corrections or comments made on the shop drawings during the review do not relieve the Contractor from compliance with the requirements of the Plans and Specifications. Review of a specific item shall not include review of an assembly of which an item is a component. The Contractor is responsible for dimensions to be confirmed and corrected at the job site; information that pertains solely to the fabrication process or to the means, methods, techniques, sequences and procedures of construction; coordination of the Work with that of other trades and performing all Work in a safe and satisfactory manner.

**Mcfarland Johnson**  
Date: 4/7/2016  
By: D. Kull

**Vermont Agency of Transportation**  
**RECEIVED**  
CK'D BY \_\_\_\_\_ OK'D BY Rob Young  
April 4, 2016  
RESUBMIT NO Approved As Noted  
BY Rob Young DATE 04/08/2016

FIELD BOLT LIST										A325 TYPE 3 BOLTS			
LINE	NO. REQ'D.	BOLT DIAM.	BOLT LEN.	BOLTS/CONN.	# OF CONN.	GRIP	THICKNESS OF PCS. CONNECTED			WASH CODE	PIECES CONNECTED AND REMARKS		
1											FIELD SPLICES		
2	600	7/8	3	120	5	1 1/4	1/2	3/4	1/2	1	WEB SPLICE		
3	320	7/8	4 1/2	64	5	3	3/4	1 1/2	3/4	1	TOP FLANGE SPLICE		
4	480	7/8	5	96	5	3 1/2	1"	1 3/4	1"	1	BOTTOM FLANGE SPLICE		
5													
6											CROSSFRAMES		
7	648	7/8	2 1/2	18	36	1"	1/2	1/2		1	INT. CF'S TO CONN. PL'S		
8	72	7/8	2 3/4	18	4	1 1/2	1/2	1"		1	ABUT. 1 CF'S TO BRG. STIFF.		
9	80	7/8	3	20	4	1 3/4	3/4	1"		1	ABUT. 2 CF'S TO BRG. STIFF.		
10													
11													

FIELD BOLT SUMMARY						2% + 3 ADDED, MIN. 3 EXTRA	
LINE	NO. OF BOLTS	BOLT DIAM.	TYPE	BOLT LEN.	ACTUAL COUNT	REMARKS	
1	664	7/8	A325 Type 3	2 1/4	648		
2	76	7/8	A325 Type 3	2 3/4	72		
3	697	7/8	A325 Type 3	3	680		
4	329	7/8	A325 Type 3	4 1/2	320		
5	493	7/8	A325 Type 3	5	480		
6							
7	2259	Hard Flat Washers for 7/8" BOLT		2200	F436-3		
8							

NO.	DATE	REVISIONS	BY
1	3-31-16	REVISED ELEVATIONS PER VE PLANS	DMM

<b>CASCO BAY STEEL STRUCTURES</b>		<b>CASCO BAY STEEL STRUCTURES</b>	
ONE WALLACE AVENUE		PHONE: 207-780-8722	
SOUTH PORTLAND, ME 04106		FAX: 207-780-8726	

STRUCTURE	VT 100 OVER MAD RIVER		
LOCATION	TOWN OF WAITSFIELD, VERMONT		
PROJECT NO.	PROJECT NO. BRP 013-4(39)	BRIDGE NO.	177
ENGINEER	MCFARLAND JOHNSON		
CUSTOMER	A.L. ST. ONGE CONTRACTOR, INC.		
ITEM	ERECTION PLAN		
SURFACE PREP.	OPEN HOLES		
PAIN			
APPROVAL	DRAWN DMM 1-25-16	SHEET NO.	JOB NO.
SHOP	CHECKED FM 3-10-16	E1	651

1: 1 Hardened flat washer and 1 direct tension indicator (DTI).