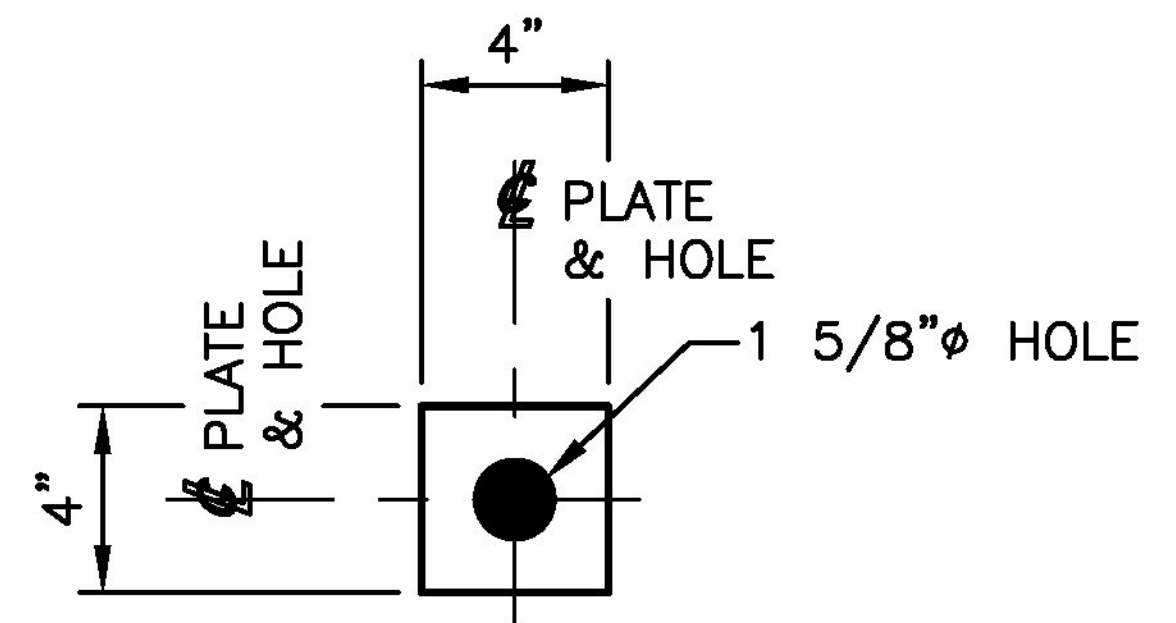
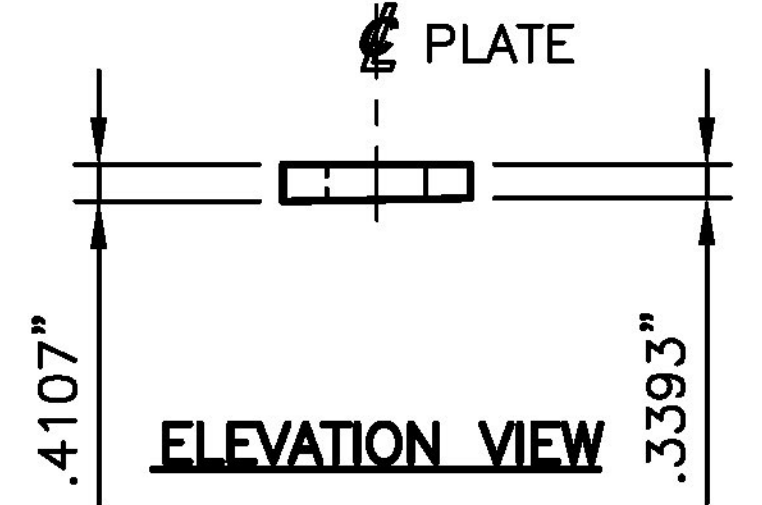


SWEDGE ANCHOR BOLT ASSEMBLY
MARK: AB1
 ROD: 1 1/2" DIA. x 25" LONG
 ASTM F1554 GR. 36 (GALV.)
 (2) LOCATED AT EACH BEARING
 (20) REQUIRED



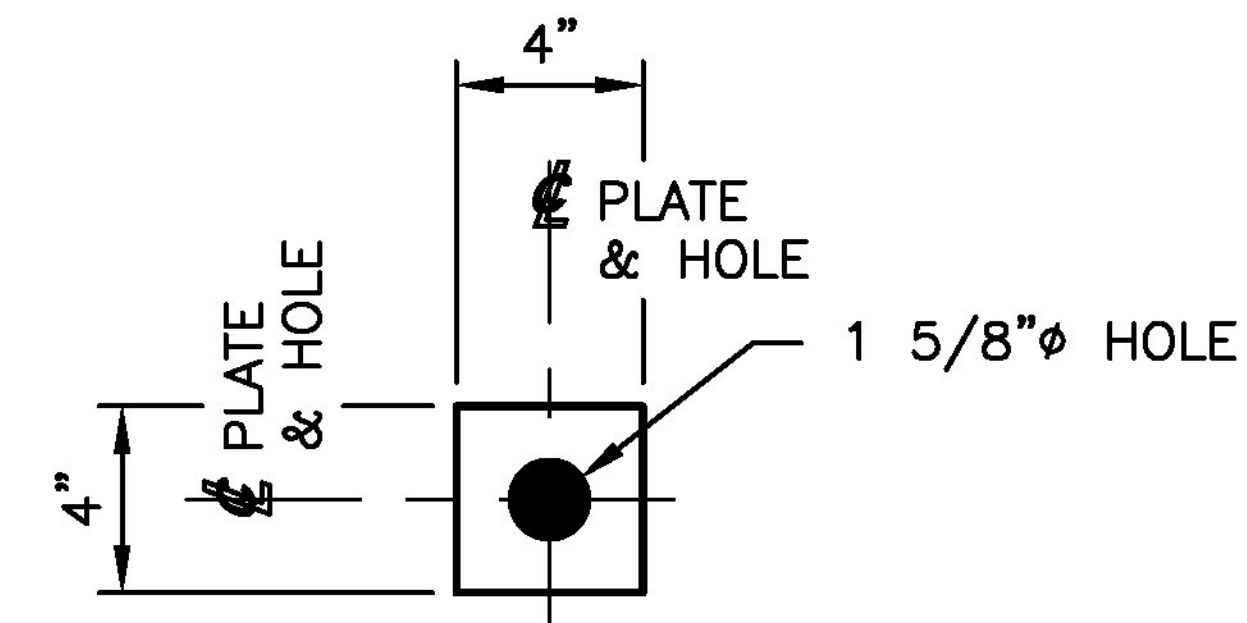
PLAN VIEW



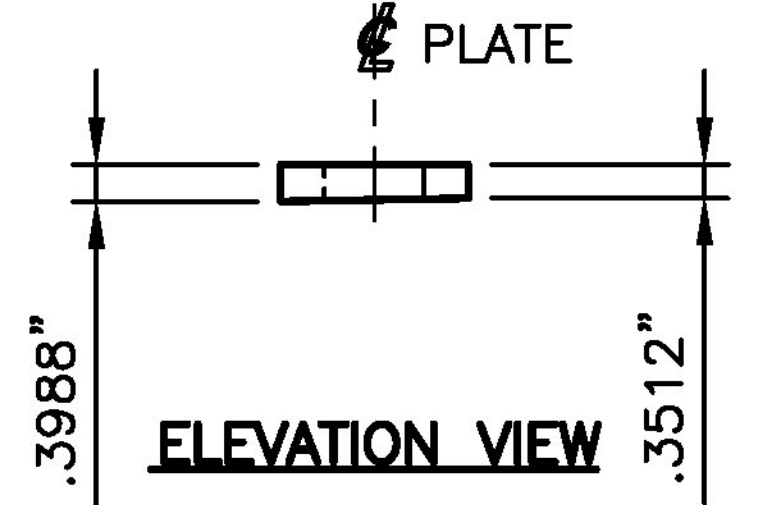
ELEVATION VIEW

BEVELED PLATE WASHER
MARK: PW1

PL 3/8" @ C.L. x 4" x 4"
 AASHTO M270 (ASTM A709) GR. 36 (GALV.)
 (2) EACH AT FBA1 & FBA2
 (4) REQUIRED



PLAN VIEW



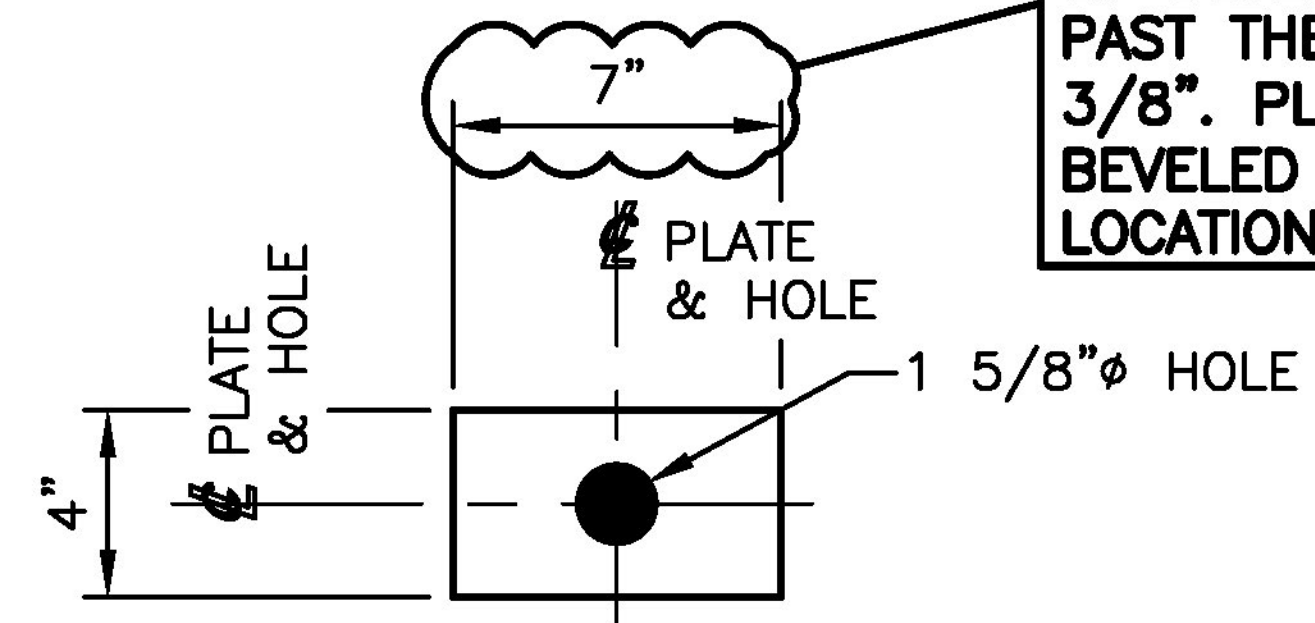
ELEVATION VIEW

BEVELED PLATE WASHER
MARK: PW2

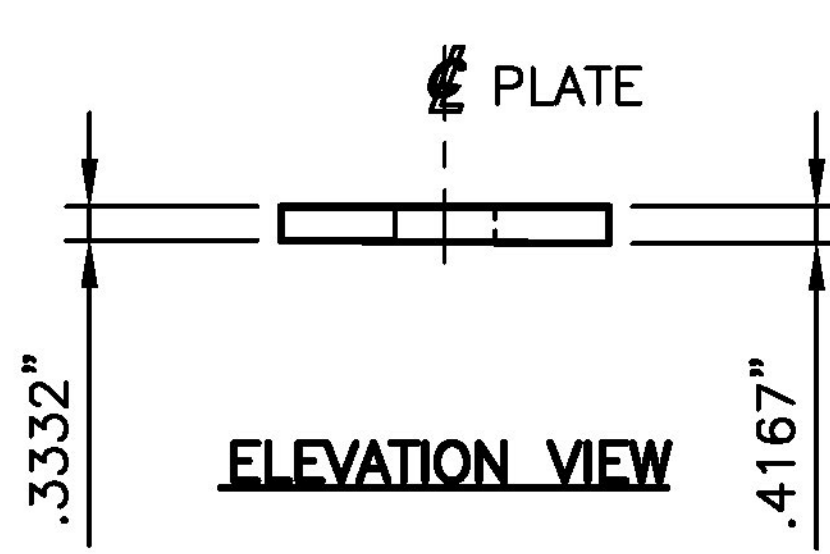
PL 3/8" @ C.L. x 4" x 4"
 AASHTO M270 (ASTM A709) GR. 36 (GALV.)
 (2) EACH AT FBA3, FBA4 & FBA5
 (6) REQUIRED

Beveled plate washer approved as detailed

APPROVER/CONTRACTOR:
 PL. WASHER AT CLIPPED CORNER OF BEVELED SOLE PL. WILL EXTEND PAST THE CLIPPED SOLE PL. BY 3/8". PLEASE VERIFY IF THE BEVELED PL. WASHER AT THESE LOCATIONS NEED TO BE CLIPPED.



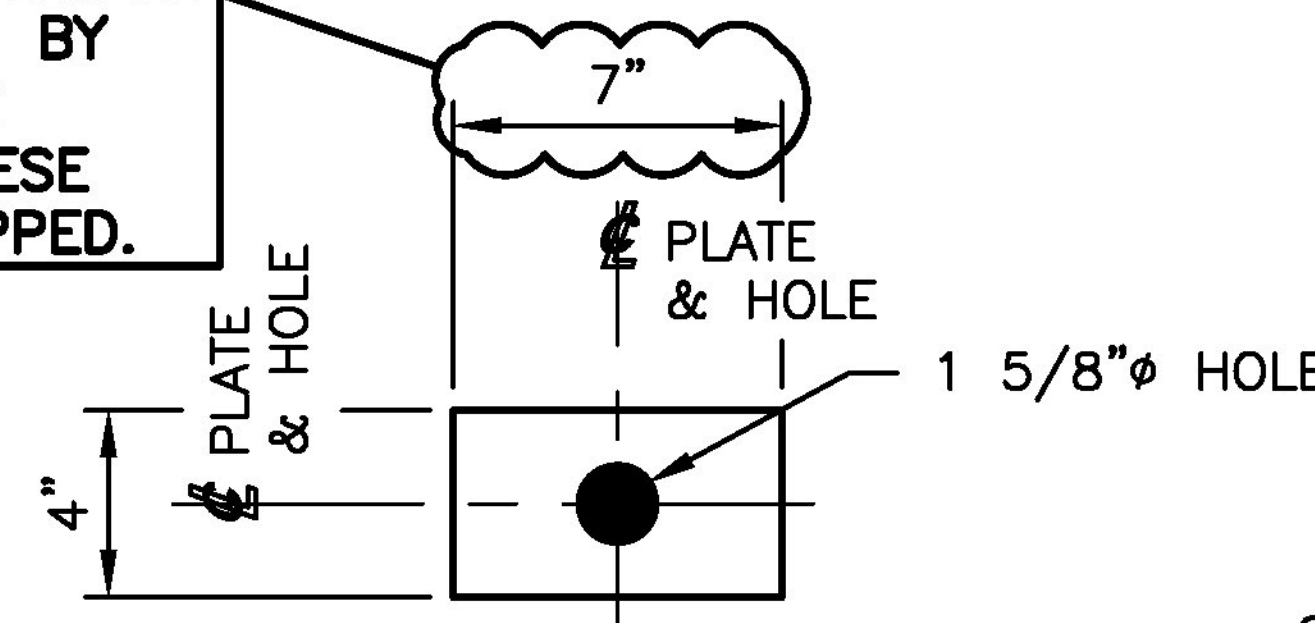
PLAN VIEW



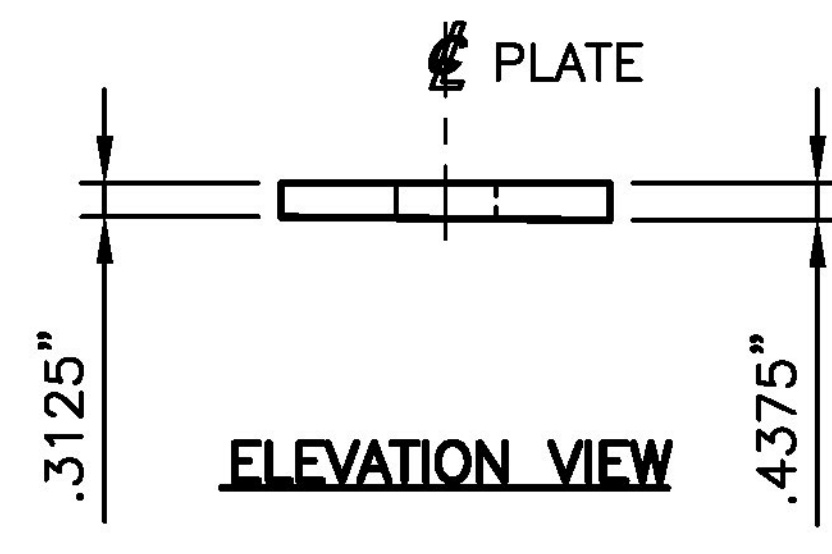
ELEVATION VIEW

BEVELED PLATE WASHER
MARK: PW3

PL 3/8" @ C.L. x 4" x 7"
 AASHTO M270 (ASTM A709) GR. 36 (GALV.)
 (2) EACH AT EBA1 & EBA2
 (4) REQUIRED



PLAN VIEW



ELEVATION VIEW

BEVELED PLATE WASHER
MARK: PW4

PL 3/8" @ C.L. x 4" x 7"
 AASHTO M270 (ASTM A709) GR. 36 (GALV.)
 (2) EACH AT EBA3, EBA4 & EBA5
 (6) REQUIRED

Approved Rejected Approved As Noted

This review is only for general conformance with the design concept and the information given in the Construction Documents. Corrections or comments made on the shop drawings during the review do not relieve the Contractor from compliance with the requirements of the Plans and Specifications. Review of a specific item shall not include review of an assembly of which an item is a component. The Contractor is responsible for dimensions to be confirmed and corrected at the job site; information that pertains solely to the fabrication process or to the means, methods, techniques, sequences and procedures of construction; coordination of the Work with that of other trades and performing all Work in a safe and satisfactory manner.

Date: 2/17/2016
 By: D. Kull

McFarland Johnson

Vermont Agency of Transportation
RECEIVED
 ON: January 22, 2016
 and Checked for
CONFORMANCE
 BY: Rob Young DATE: 02/18/2016

SEE SHEET GN1 FOR GENERAL NOTES.

STATE OF VERMONT
 AGENCY OF TRANSPORTATION
 ROUTE NO: VT 100
 (MINOR ARTERIAL)
 BRIDGE NO: 177
 TOWN OF WAITSFIELD

STATE	COUNTY	CONTROL NO.
VT	WASHINGTON	N/A

PROJ. NO.: BF 013-4(39)

DYNAMIC RUBBER:
LAMINATED BEARING ASSEMBLIES

Cosmea 1501 ROCKY RIDGE ROAD
 P.O. BOX 2159
 ATHENS, TEXAS 75751

SCALE: NONE	DRAWN BY: RJH	CHECKED BY: ELS
	DATE: 1/11/18	DATE: 1/19/18

SHEET 3 OF 3 JOB NO.: 13319

REV.	DESCRIPTION	BY	DATE	CK'D	DATE	CUSTOMER: A.L. ST. ONGE CONTRACTOR INC.	DRAWING NUMBER: 13319-D3	REV. 0
------	-------------	----	------	------	------	---	--------------------------	--------