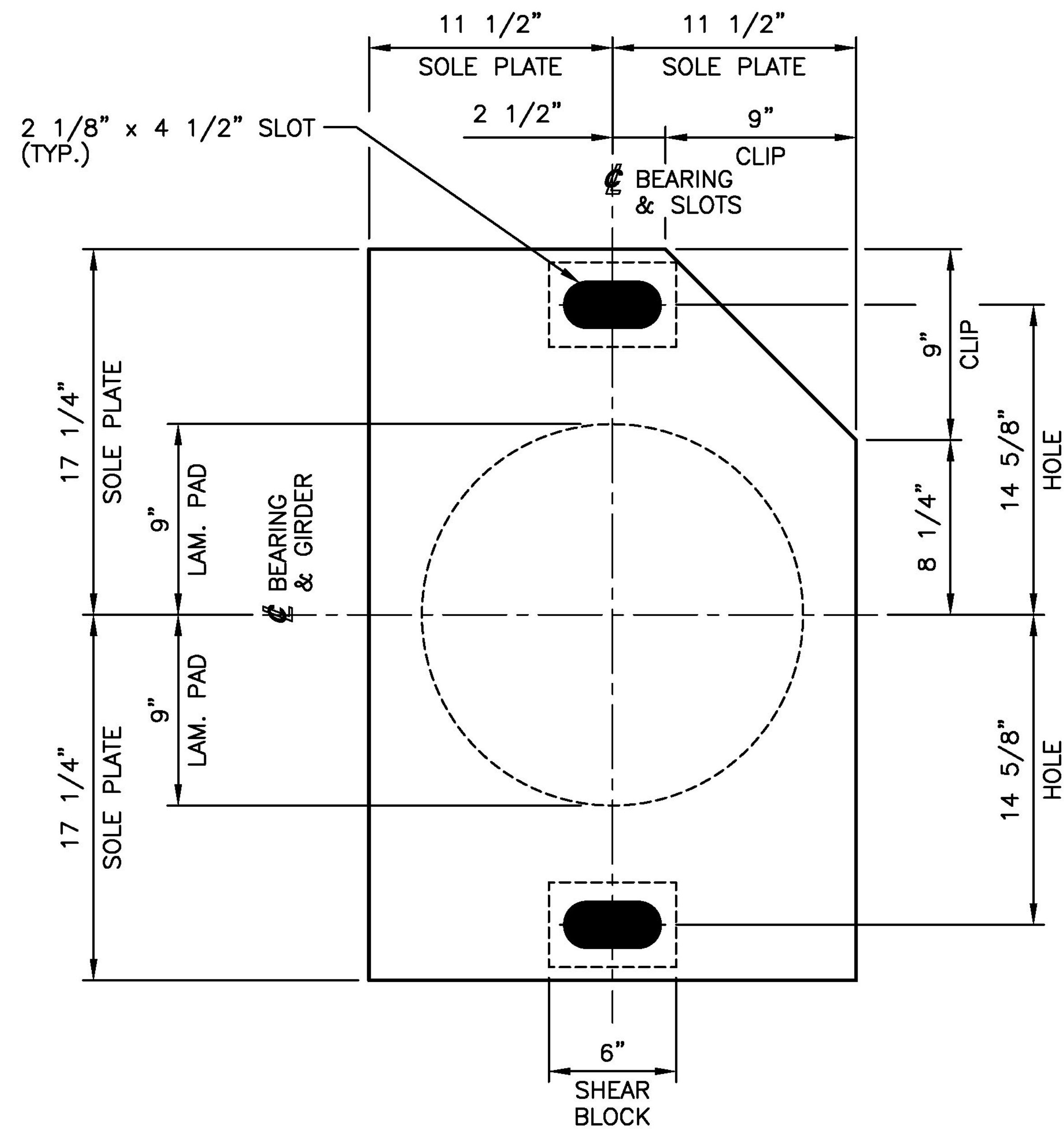
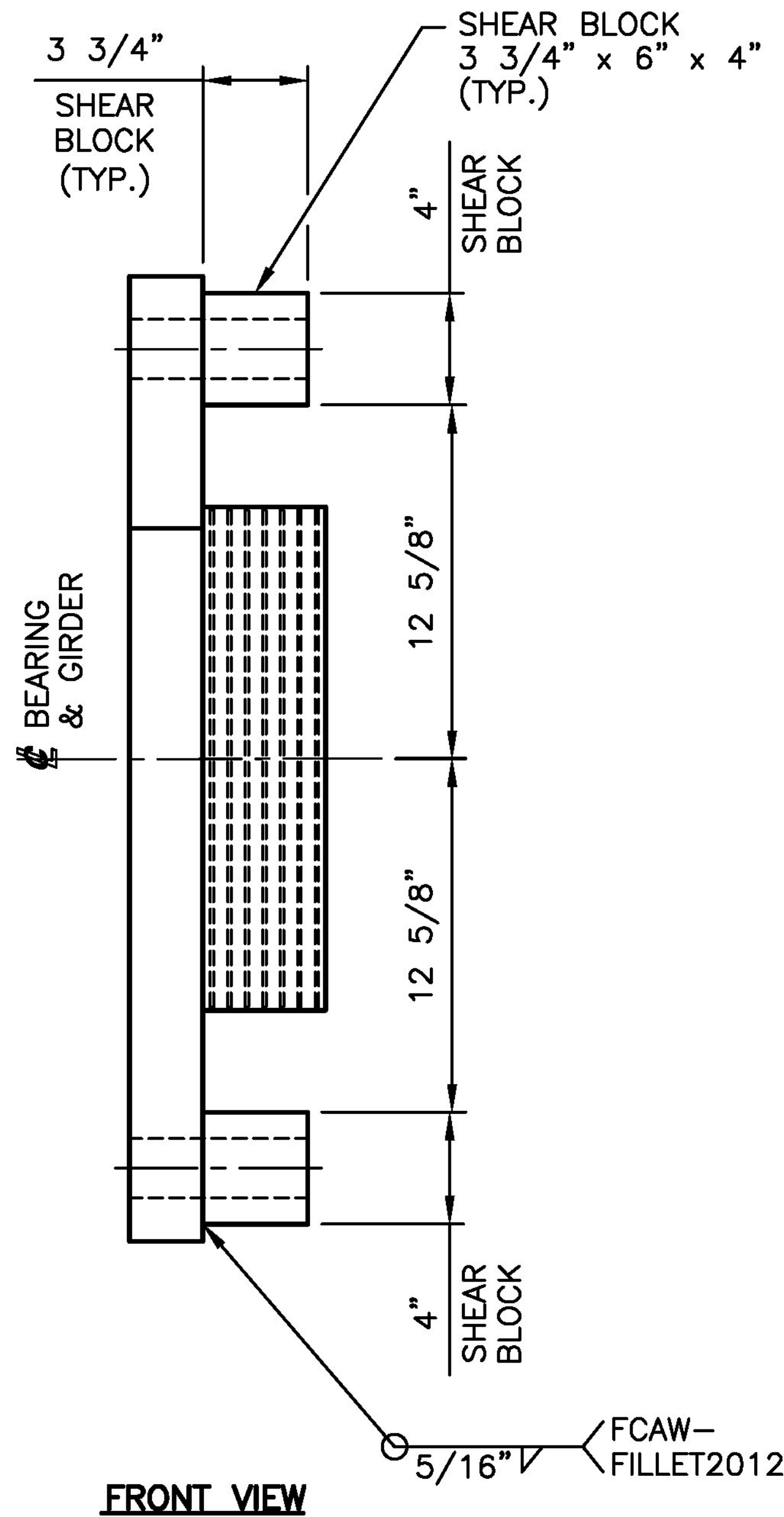


Vermont Agency of Transportation
RECEIVED
 ON: January 22, 2016
 and Checked for
CONFORMANCE
 BY: Rob Young DATE: 02/18/2016

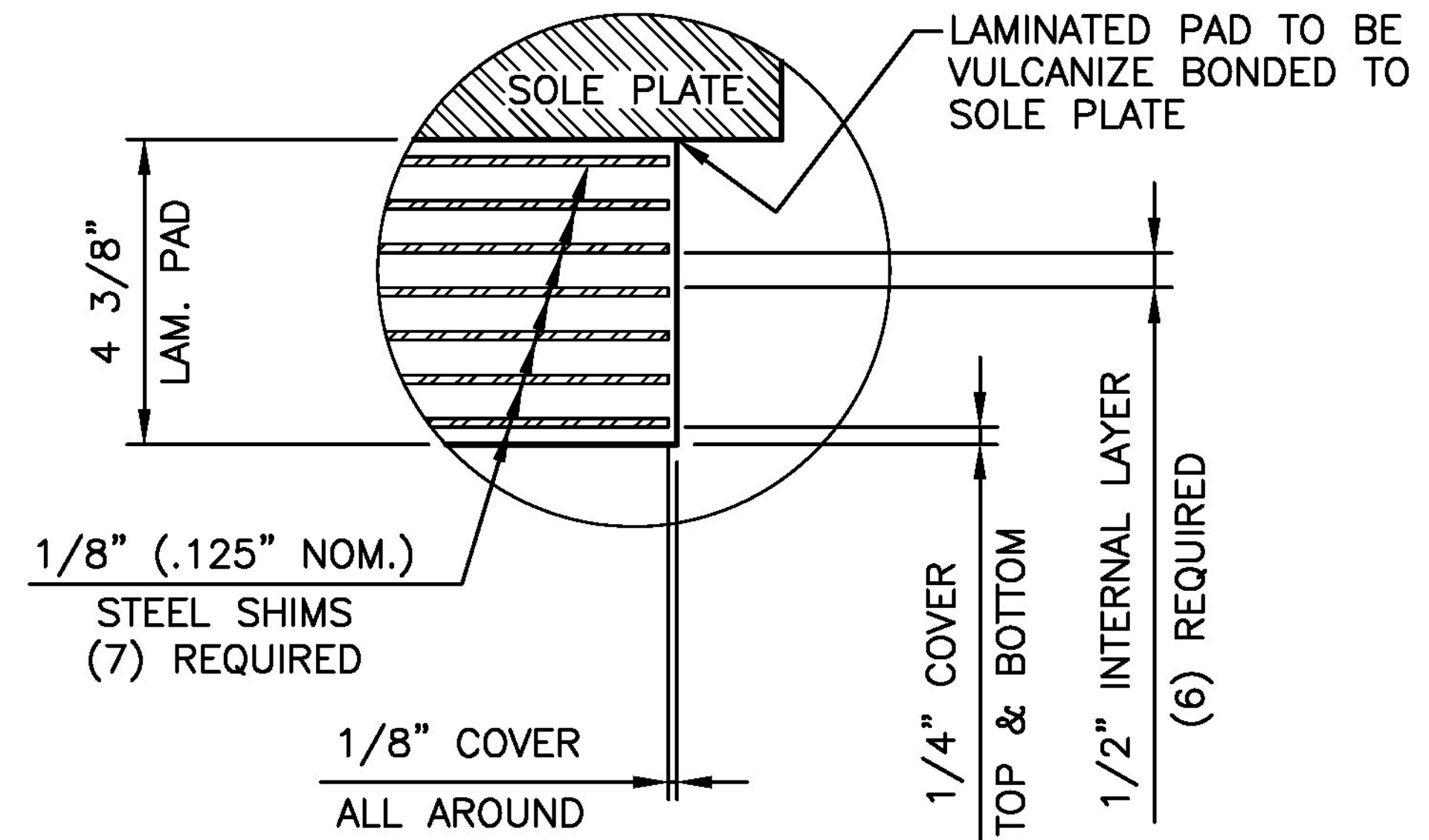
Approved _____ Rejected _____ X Approved As Noted _____
 This review is only for general conformance with the design concept and the information given in the Construction Documents. Corrections or comments made on the shop drawings during the review do not relieve the Contractor from compliance with the requirements of the Plans and Specifications. Review of a specific item shall not include review of an assembly of which an item is a component. The Contractor is responsible for dimensions to be confirmed and corrected at the job site; information that pertains solely to the fabrication process or to the means, methods, techniques, sequences and procedures of construction; coordination of the Work with that of other trades and performing all Work in a safe and satisfactory manner.
 Date: 2/17/2016
 By: D. Kull
 McFarland Johnson



PLAN VIEW



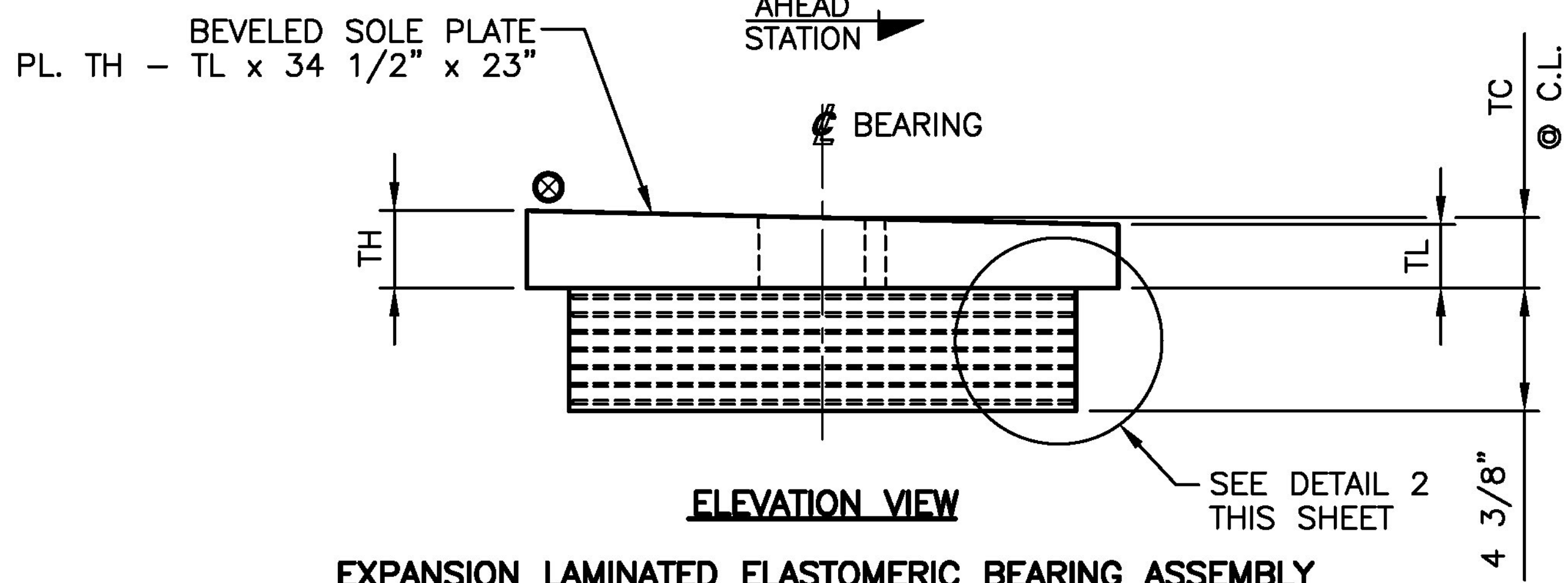
FRONT VIEW



DETAIL 2

4 3/8" x 18" DIA LAMINATED PAD
 60 DUROMETER GRADE 4 NATURAL RUBBER
 WITH A SHEAR MODULUS OF 130 PSI TO 200 PSI
 VULCANIZE BONDED TO SOLE PLATE
 (5) REQUIRED

MAX. DESIGN LOAD (UNFACTORED)
 DEAD LOAD = 148 kips
 LIVE LOAD = 140 kips



ELEVATION VIEW

EXPANSION LAMINATED ELASTOMERIC BEARING ASSEMBLY

(SHEAR BLOCK NOT SHOWN FOR CLARITY)
 FOR DIMENSIONS, LOCATIONS & MARKS
 SEE SOLE PLATE TABLE ON THIS SHEET

SOLE PLATE TABLE						
ASSY. MARK NO.	LOCATION		QTY	TL (in.) THK. LOW SIDE	TH (in.) THK. HIGH SIDE	TC (in.) THK. AT C.L.
	ABUT/PIER NO(s)	GIRDER NO(s)				
EBA1	ABUTMENT 2	G1	1	1 3/4	2	1 7/8
EBA2	ABUTMENT 2	G2	1	2 1/4	2 1/2	2 3/8
EBA3	ABUTMENT 2.	G3	1	1 15/16	2 5/16	2 1/8
EBA4	ABUTMENT 2	G4	1	1 13/16	2 3/16	2
EBA5	ABUTMENT 2	G5	1	1 11/16	2 1/16	1 7/8

SEE SHEET GN1 FOR GENERAL NOTES.

STATE OF VERMONT
 AGENCY OF TRANSPORTATION
 ROUTE NO: VT 100
 (MINOR ARTERIAL)
 BRIDGE NO: 177
 TOWN OF WAITSFIELD

STATE	COUNTY	CONTROL NO.
VT	WASHINGTON	N/A

PROJ. NO.: BF 013-4(39)

**DYNAMIC RUBBER:
 LAMINATED BEARING ASSEMBLIES**

Cosmea 1501 ROCKY RIDGE ROAD
 P.O. BOX 2159
 ATHENS, TEXAS 75751

SCALE: NONE	DRAWN BY: RJH	CHECKED BY: ELS
	DATE: 1/11/16	DATE: 1/19/16

SHEET 2 OF 3 **JOB NO.: 13319**

REV.	DESCRIPTION	BY	DATE	CK'D	DATE	CUSTOMER: A.L. ST. ONGE CONTRACTOR INC.	DRAWING NUMBER: 13319-D2	REV. 0
------	-------------	----	------	------	------	---	--------------------------	--------

