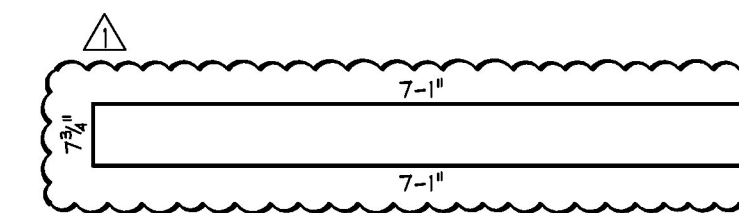
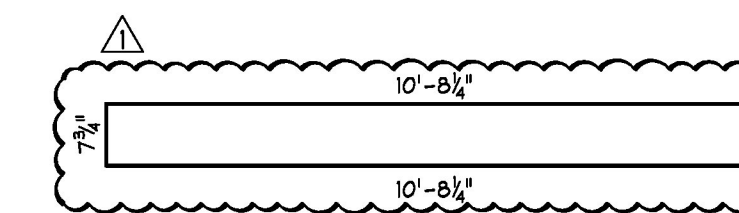


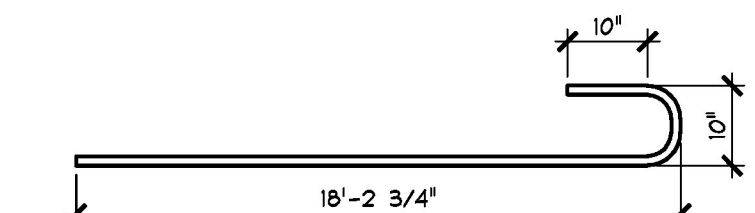
MISCELLANEOUS MATERIALS				
ITEM	MARK	QTY.	DESCRIPTION	REMARKS
1		48	4"φ I.D. x 1'-4" PVC SLEEVE	
2		32	8T x 6 3/4" SWIFT LIFT LIFTER (GALV.)	DOMESTIC ORIGIN (BUY AMERICAN)
3				
4		64	#6 x 24'-6" (STAINLESS STEEL)	
5				
6		2	#8 x 3'-0" (STAINLESS STEEL)	FOR TESTING
7				
8				
9				
10				



**MD-517S**  
#5 BENT BAR  
STAINLESS STEEL  
USE 3/8" PIN  
(192) REQ'D.



**MD-518S**  
#5 BENT BAR  
STAINLESS STEEL  
USE 3/8" PIN  
(96) REQ'D.



**MD-801S**  
#8 BENT BAR  
STAINLESS STEEL  
USE 6/8" PIN  
(104) REQ'D.

Vermont Agency of Transportation  
**RECEIVED**  
ON: **May 10, 2016**  
and Checked for  
**CONFORMANCE**  
BY: Rob Young DATE: 05/16/2016

Approved	<input checked="" type="checkbox"/> Approved As Noted
Rejected	

This review is only for general conformance with the design concept and the information given in the Construction Documents. Corrections or comments made on the shop drawings during the review do not relieve the Contractor from compliance with the requirements of the Plans and Specifications. Review of a specific item shall not include review of an assembly of which an item is a component. The Contractor is responsible for dimensions to be confirmed and corrected at the job site; information that pertains solely to the fabrication process or to the means, methods, techniques, sequences and procedures of construction; coordination of the Work with that of other trades and performing all Work in a safe and satisfactory manner.

Date: 5/13/2016  
By: D. Kull

**McFarland Johnson**

5-10-16 REVISED AS NOTED

APPROVAL STAMP:	<b>J.P. CARRARA &amp; SONS INC.</b> Precast & Prestress Manufacturer 2464 CASE STR., MIDDLEBURY, VERMONT 05753 Phone: (802)388-6361 Fax: (802)388-9010		<b>A.L. ST. ONGE CONTRACTOR, INC.</b> CONTRACTOR MONTGOMERY, VERMONT	
	<b>STATE OF VERMONT AGENCY OF TRANSPORTATION</b> COUNTY OF WINDSOR		DATE: JAN. 12, 2016	SCALE: NOTED
	<b>TOWN OF WAITSFIELD</b> VT ROUTE 100 (MINOR ARTERIAL) BRIDGE NO.: 177 PROJECT NO.: BRP 013-4(39)		CHKD: -	DFTM: B.L.
	<b>PRECAST APPROACH SLABS</b> MATERIALS LIST		JOB NO: 23480-016	DWG. NO: <b>M2</b>