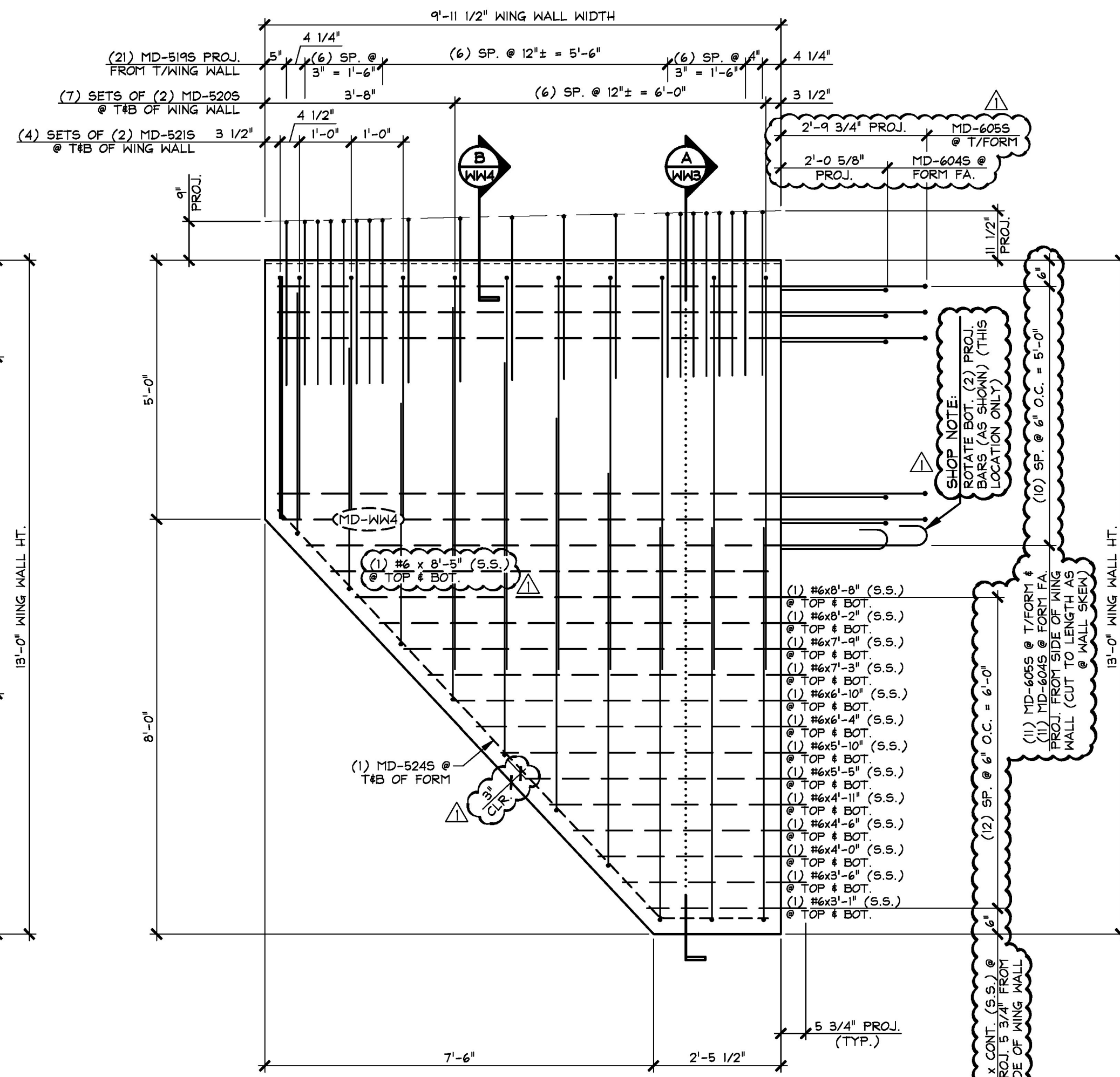
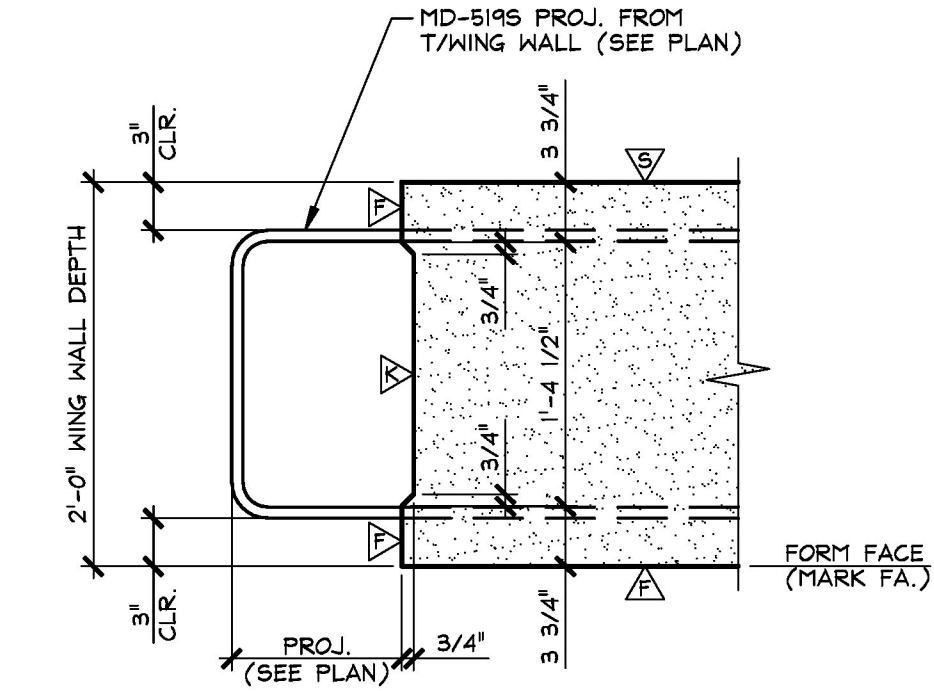


1 DIMENSIONAL PLAN VIEW IN FORM
WW4
1/2" = 1'-0"



2 REINFORCING PLAN VIEW IN FORM
WW4
1/2" = 1'-0"

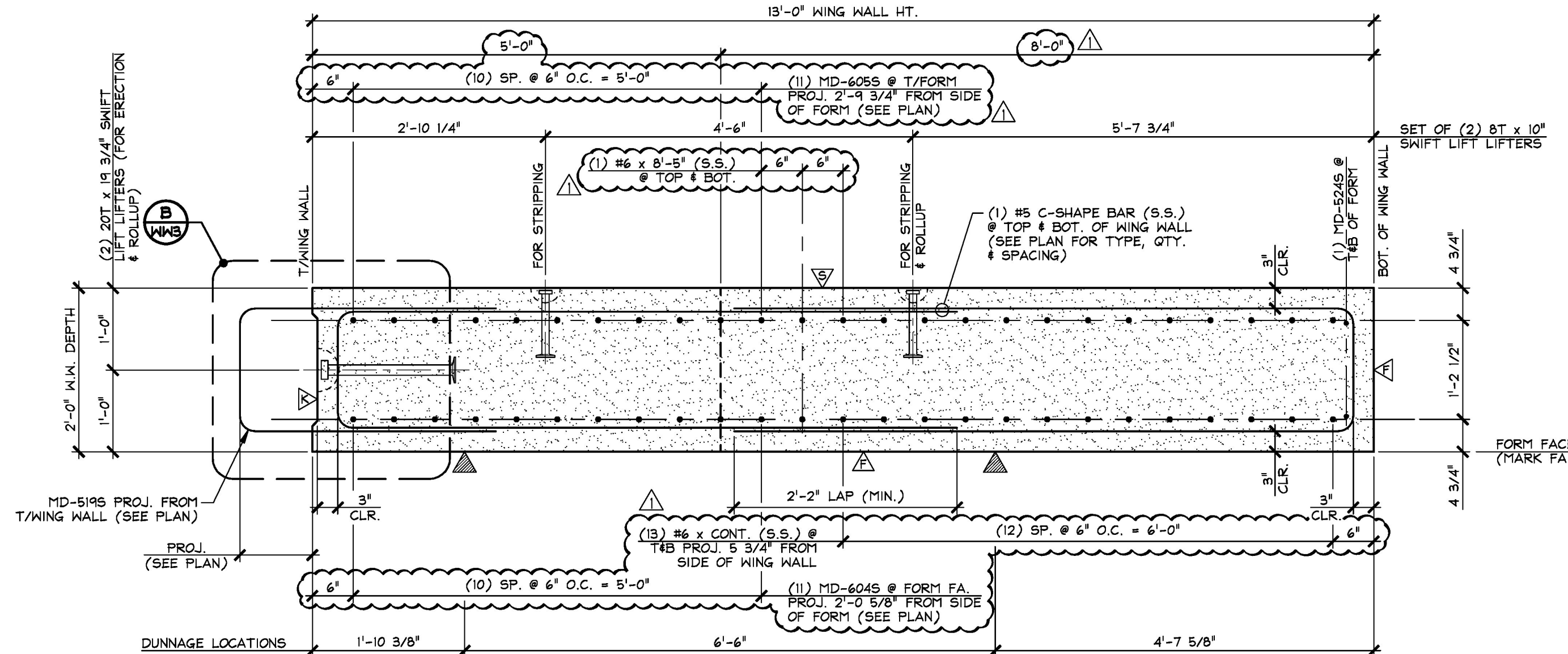


B TOP OF WINGWALL SECTION
WW3
1" = 1'-0"

- ▲ DENOTES FORM FINISH
- △ DENOTES SMOOTH SCREENED FINISH
- △ DENOTES ROUGHENED SURFACE TO PROVIDE AN 1/8" AMPLITUDE EXPOSED AGGREGATE PROFILE. UTILIZE A SURFACE RETARDER WITH WATER BLAST, SAND BLAST OR A COMBINATION OF BOTH TO ACHIEVE THE DESIRED SHEAR KEY SURFACE FINISH.

SHOP NOTE:
28-DAY STRENGTH = 5,000 PSI
HANDLING STRENGTH = 3,500 PSI
MIX #445M5CC

MARK: MD-WW4 QTY.: 1 WT.: 14.92 T VOL.: 7.37 cy			
MATERIAL LIST / WING WALL			
ITEM	MARK	DESCRIPTION	QTY.
1	MD-5195	#5 BENT BAR (STAINLESS STEEL)	21
2	MD-5205	#5 BENT BAR (STAINLESS STEEL)	14
3	MD-5215	#5 BENT BAR (STAINLESS STEEL)	4
4	MD-5245	#5 BENT BAR (STAINLESS STEEL)	4
5			
6	MD-6045	#6 BENT BAR (STAINLESS STEEL)	-
7	MD-6055	#6 BENT BAR (STAINLESS STEEL)	-
8			
9			
10			
11			
12		#6 x 8'-8" (STAINLESS STEEL)	2
13		#6 x 8'-2" (STAINLESS STEEL)	2
14		#6 x 7'-9" (STAINLESS STEEL)	2
15		#6 x 7'-3" (STAINLESS STEEL)	2
16		#6 x 6'-10" (STAINLESS STEEL)	2
17		#6 x 6'-4" (STAINLESS STEEL)	2
18		#6 x 5'-10" (STAINLESS STEEL)	2
19		#6 x 5'-5" (STAINLESS STEEL)	2
20		#6 x 4'-11" (STAINLESS STEEL)	2
21		#6 x 4'-6" (STAINLESS STEEL)	2
22		#6 x 4'-0" (STAINLESS STEEL)	2
23		#6 x 3'-6" (STAINLESS STEEL)	2
24		#6 x 3'-1" (STAINLESS STEEL)	2
25		#6 x 8'-5" (STAINLESS STEEL)	2
26			
27		8T x 10' SWIFT LIFT LIFTER (GALV.)	4
28		20T x 19 3/4' SWIFT LIFT LIFTER (GALV.)	2
29			
30			



A WING WALL SECTION
WW4
3/4" = 1'-0"

Approved _____ Rejected _____ X Approved As Noted _____

This review is only for general conformance with the design concept and the information given in the Construction Documents. Corrections or comments made on the shop drawings during the review do not relieve the Contractor from compliance with the requirements of the Plans and Specifications. Review of a specific item shall not include review of an assembly of which an item is a component. The Contractor is responsible for dimensions to be confirmed and corrected at the job site; information that pertains solely to the fabrication process or to the means, methods, techniques, sequences and procedures of construction; coordination of the Work with that of other trades and performing all Work in a safe and satisfactory manner.

Vermont Agency of Transportation
RECEIVED
 ON: May 10, 2016
 and Checked for CONFORMANCE
 BY: Rob Young DATE: 05/16/2016

Date: 5/13/2016
 By: D. Kull

McFarland Johnson

APPROVAL STAMP:	J.P. CARRARA & SONS INC. Precast & Prestress Manufacturer 2464 CASE STR., MIDDLEBURY, VERMONT 05753 Phone: (802)388-6361 Fax: (802)388-9010		A.L. ST. ONGE CONTRACTOR, INC. CONTRACTOR MONTGOMERY, VERMONT	
	STATE OF VERMONT AGENCY OF TRANSPORTATION COUNTY OF WINDSOR		DATE: JAN. 12, 2016 SCALE: NOTED	
	TOWN OF WAITSFIELD VT ROUTE 100 (MINOR ARTERIAL) BRIDGE NO.: 177 PROJECT NO.: BRP 013-4(39)		CHKD: - DFTM: B.L. JOB NO: 23480-016	
	PRECAST WING WALL DETAILS		DWG. NO: WW4	