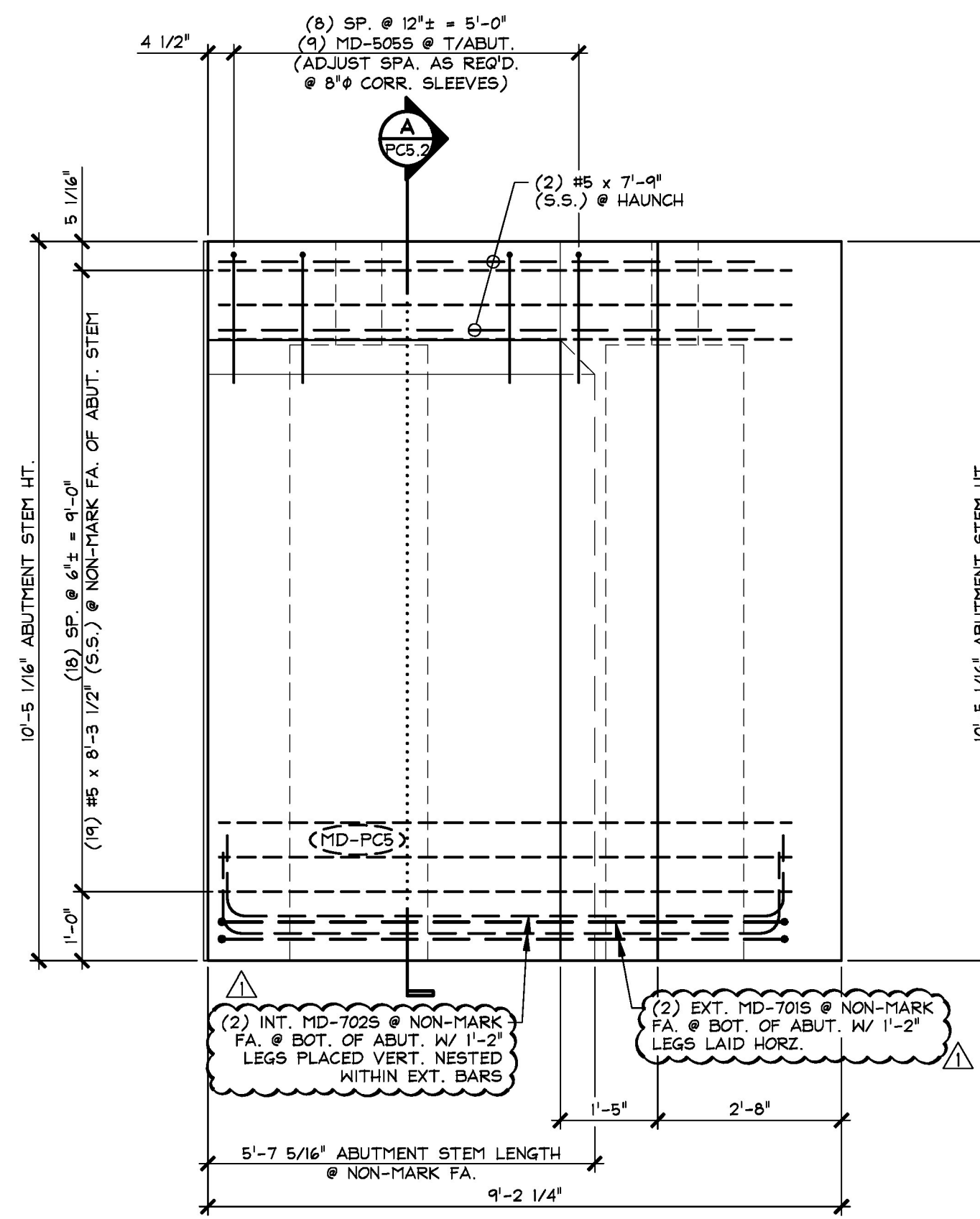
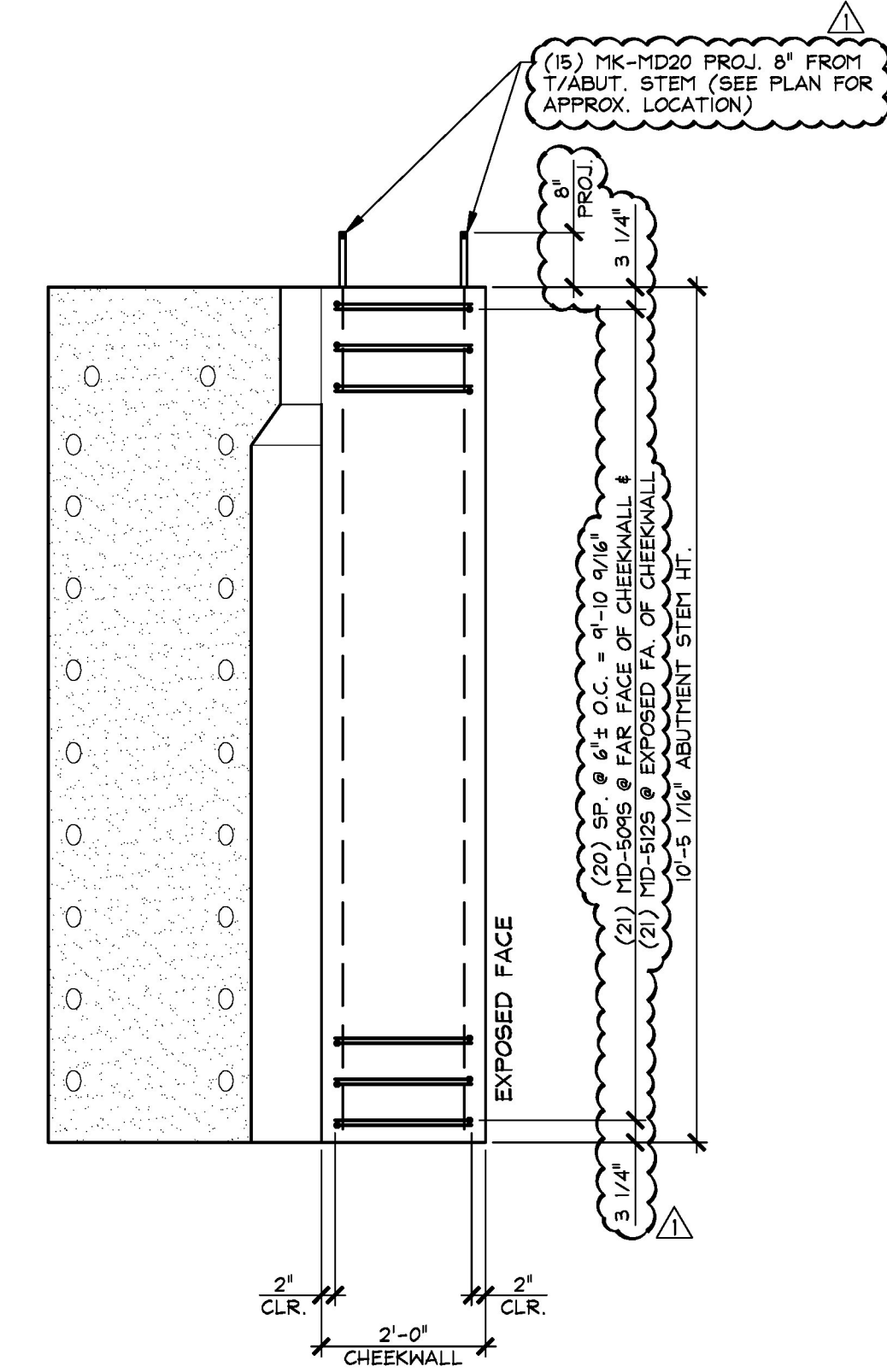


3 REINFORCING ELEVATION
PC5.3 MARK FACE 1/2" = 1'-0"



4 REINFORCING ELEVATION
PC5.3 NON-MARK FACE 1/2" = 1'-0"



5 CHEEKWALL REINFORCING
PC5.3 ELEVATION 1/2" = 1'-0"

SHOP NOTE:
ADJUST REINFORCING AS REQUIRED TO CLEAR SLEEVES, ANCHOR BOLTS, PROJECTING BARS, INSERTS, ETC.

5-10-16 REVISED AS NOTED AND OMIT PRECAST CHEEKWALL

Approved
 Approved As Noted
 Rejected

This review is only for general conformance with the design concept and the information given in the Construction Documents. Corrections or comments made on the shop drawings during the review do not relieve the Contractor from compliance with the requirements of the Plans and Specifications. Review of a specific item shall not include review of an assembly of which an item is a component. The Contractor is responsible for dimensions to be confirmed and corrected at the job site; information that pertains solely to the fabrication process or to the means, methods, techniques, sequences and procedures of construction; coordination of the Work with that of other trades and performing all Work in a safe and satisfactory manner.

Vermont Agency of Transportation
RECEIVED
 ON: May 10, 2016
 and Checked for
CONFORMANCE
 BY: Rob Young DATE: 05/16/2016

Date: 5/13/2016
 By: D. Kull
McFarland Johnson

APPROVAL STAMP:	J.P. CARRARA & SONS INC. Precast & Prestress Manufacturer 2464 CASE STR., MIDDLEBURY, VERMONT 05753 Phone: (802)388-6361 Fax: (802)388-9010		A.L. ST. ONGE CONTRACTOR, INC. CONTRACTOR MONTGOMERY, VERMONT	
	STATE OF VERMONT AGENCY OF TRANSPORTATION COUNTY OF WINDSOR		DATE: JAN. 12, 2016	SCALE: NOTED
	TOWN OF WAITSFIELD VT ROUTE 100 (MINOR ARTERIAL) BRIDGE NO.: 177 PROJECT NO.: BRP 013-4(39)		CHKD: -	DFTM: B.L.
	PRECAST ABUTMENT STEM REINFORCING ELEVATIONS		JOB NO: 23480-016	DWG. NO: PC5.3