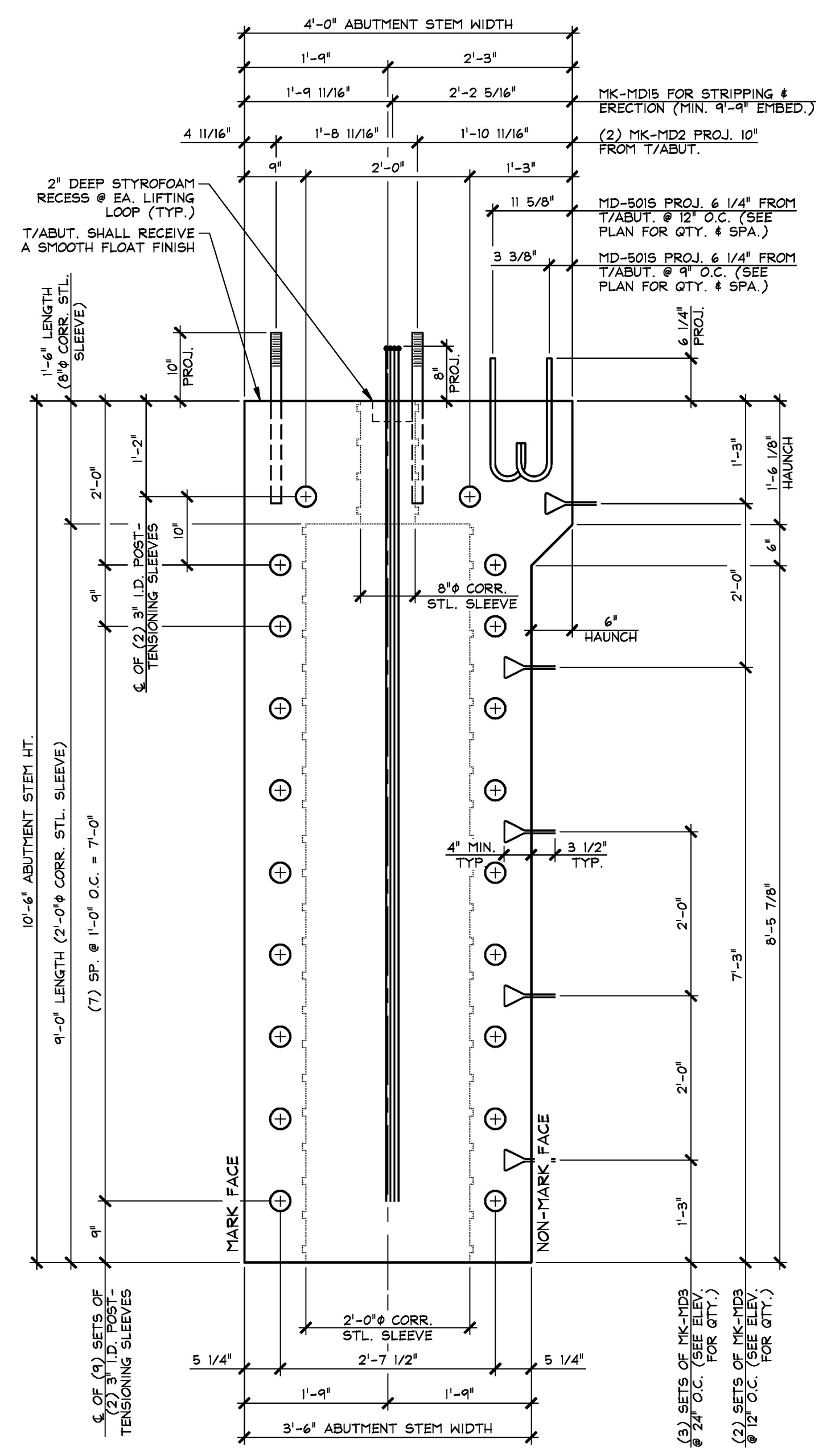
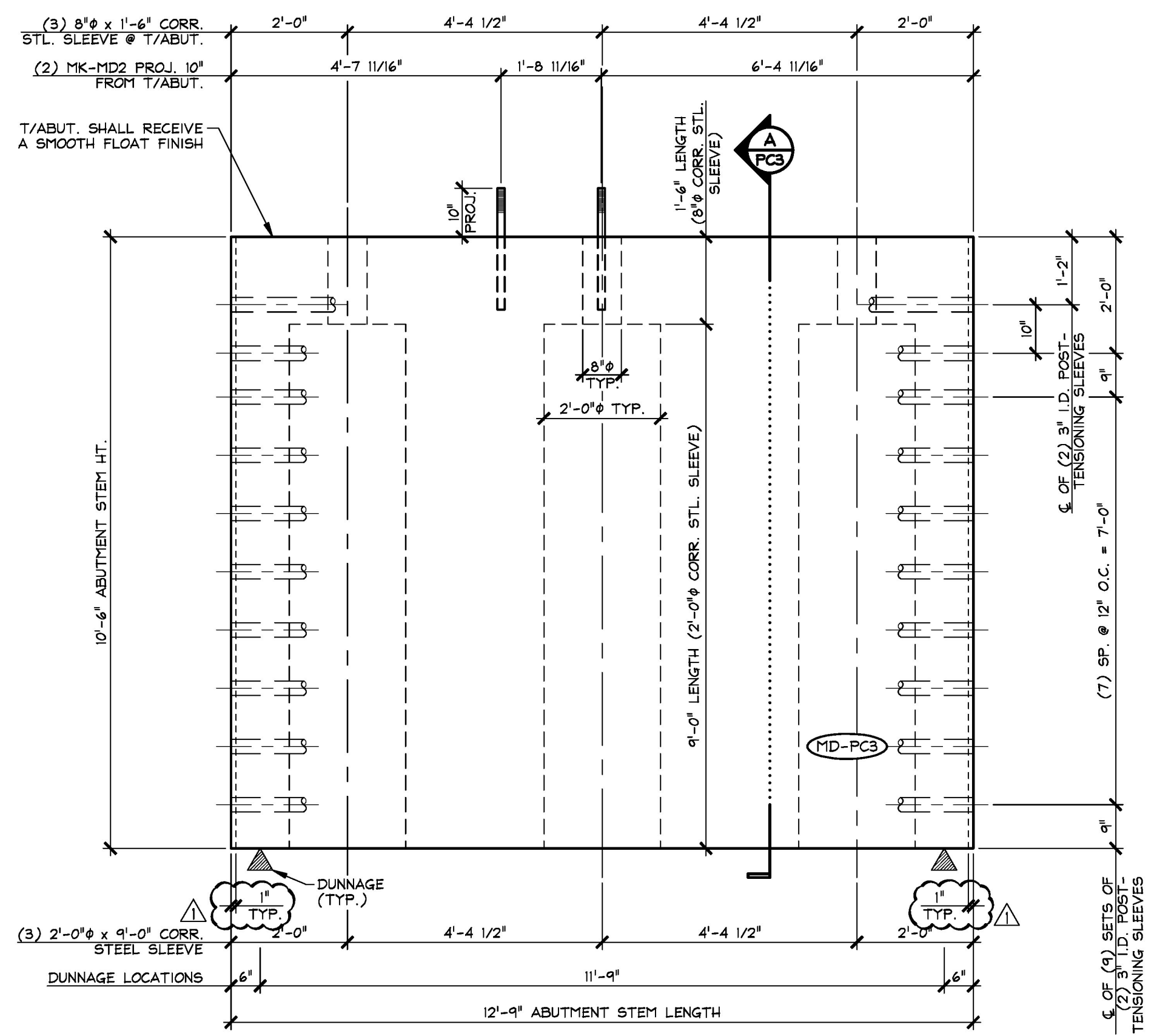


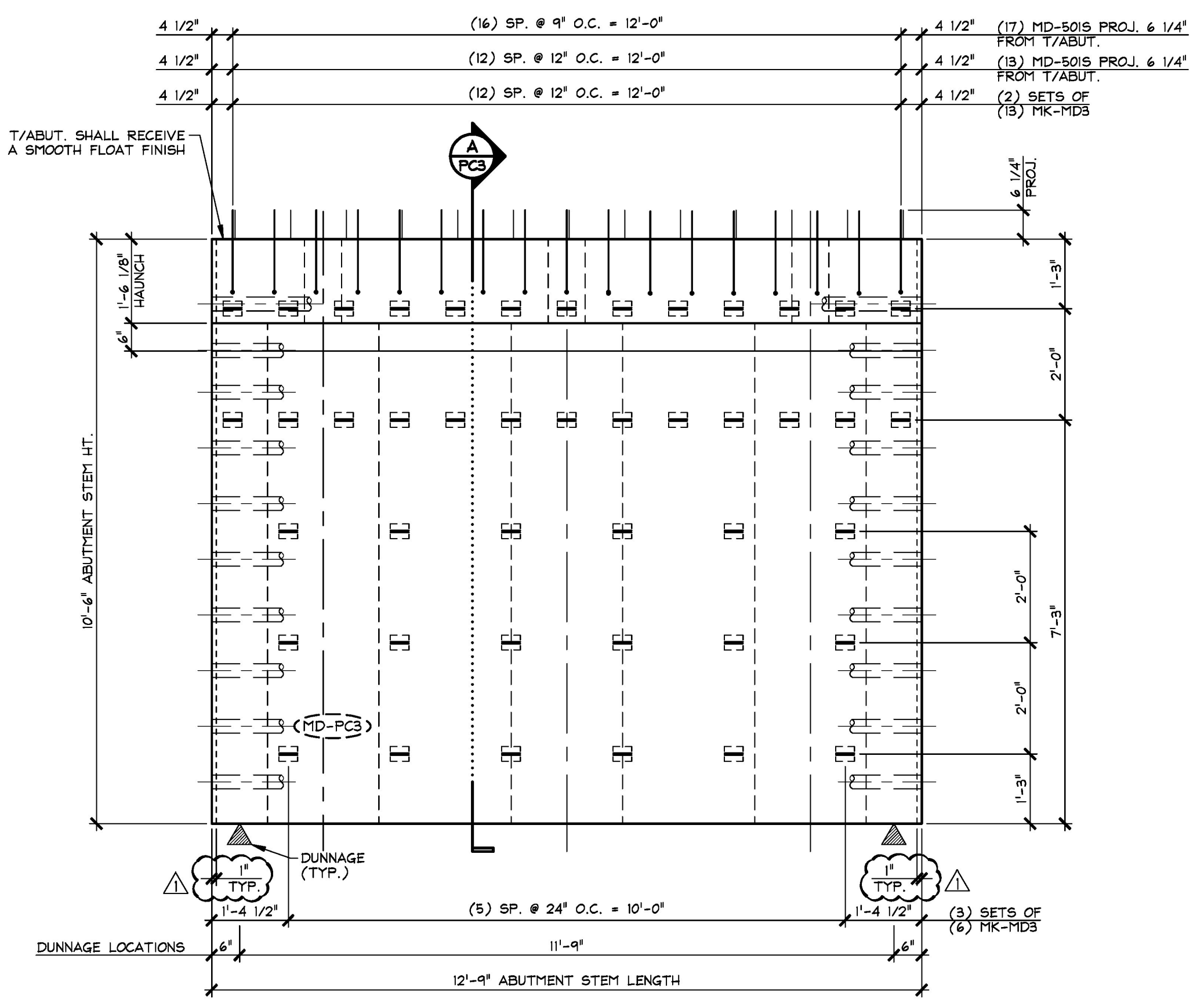
F:\VT-Bridges\23480-15 Waitfield\23480-PC3.dwg, 5/10/2016 10:42:58 AM



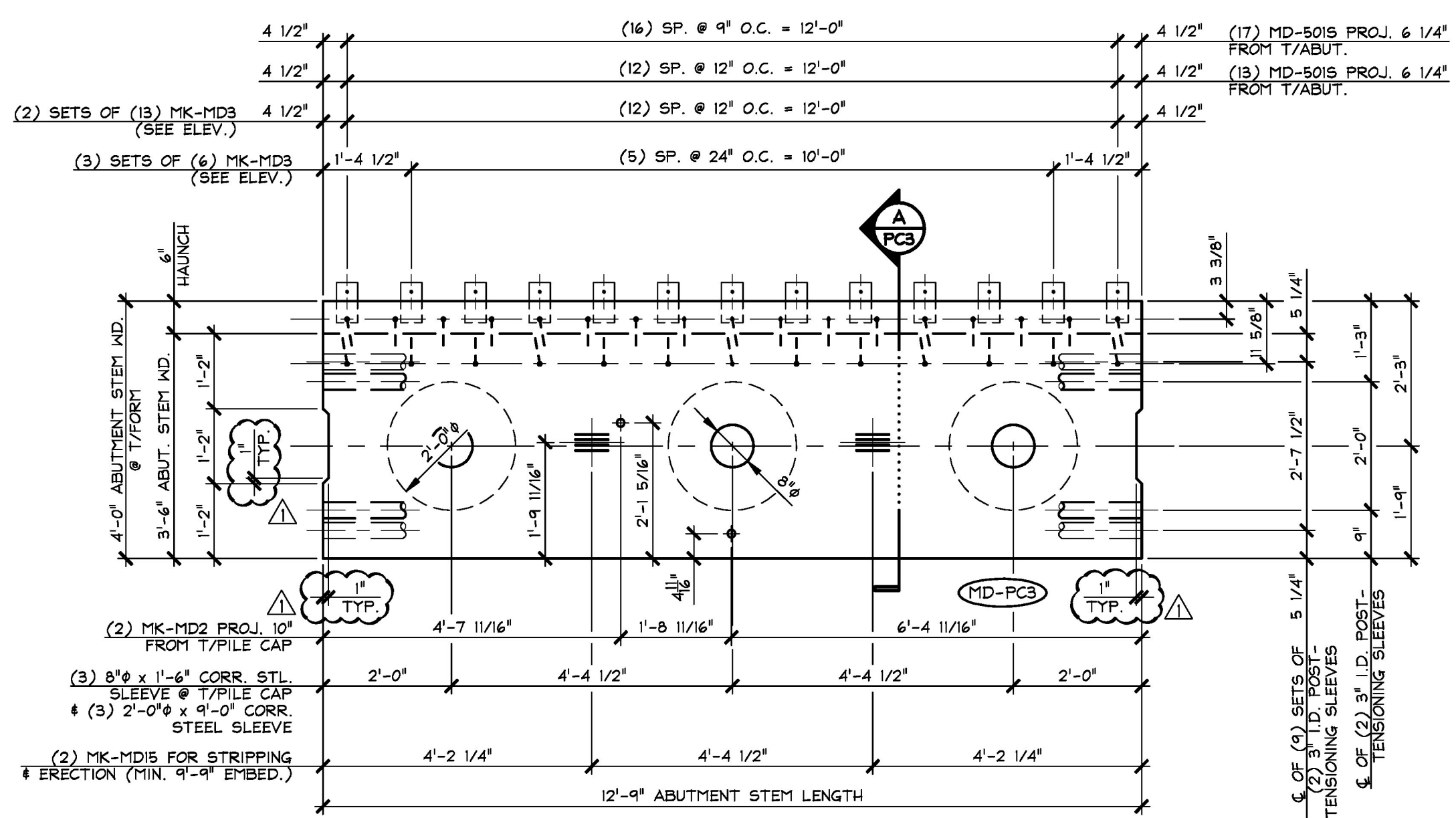
**A DIMENSIONAL SECTION**  
PC3  
3/4" = 1'-0"



**1 DIMENSIONAL ELEVATION**  
PC3 MARK FACE  
1/2" = 1'-0"



**2 DIMENSIONAL ELEVATION**  
PC3 NON-MARK FACE  
1/2" = 1'-0"



**3 DIMENSIONAL PLAN VIEW IN FORM**  
PC3  
1/2" = 1'-0"

Approved \_\_\_\_\_ X Approved As Noted \_\_\_\_\_  
Rejected \_\_\_\_\_

This review is only for general conformance with the design concept and the information given in the Construction Documents. Corrections or comments made on the shop drawings during the review do not relieve the Contractor from compliance with the requirements of the Plans and Specifications. Review of a specific item shall not include review of an assembly of which an item is a component. The Contractor is responsible for dimensions to be confirmed and corrected at the job site; information that pertains solely to the fabrication process or to the means, methods, techniques, sequences and procedures of construction; coordination of the Work with that of other trades and performing all Work in a safe and satisfactory manner.

Date: 5/13/2016  
By: D. Kull

**SHOP NOTE:**  
SEE DRAWING NO. "PC3.1" FOR ABUTMENT REINFORCING

**SHOP NOTE:**  
28-DAY STRENGTH = 5,000 PSI  
HANDLING STRENGTH = 3,500 PSI  
MIX #445M9CC

MATERIAL LIST / ABUTMENT			
ITEM	MARK	DESCRIPTION	QTY.
1	MD-5015	#5 BENT BAR (STAINLESS STEEL)	30
2			
3			
4			
5			
6			
7		8" x 1'-6" CORRUGATED STEEL SLEEVE (GALV.)	3
8		2'-0" x 9'-0" CORRUGATED STEEL SLEEVE (GALV.)	3
9	MK-MD2	1 1/2" x 2'-1" SHEDGE HANCHOR BOLT W/ 5" THREADS (GALV.)	2
10	MK-MD3	SOIL REINFORCING CONNECTION CLIP (HIGH ADHERENCE RIBBED STEEL REINFORCING STRIP) (GALV.)	44
11	MK-MD5	SET OF (4) 0.60" Ø STRAND LIFTING LOOPS	2
12			
13			
14			
15			

APPROVAL STAMP:

**J.P. CARRARA & SONS INC.**  
Precast & Prestress Manufacturer  
2864 CASE STR., MIDDLEBURY, VERMONT 05753 Phone: (802)388-6361 Fax: (802)388-9010

**A.L. ST. ONGE CONTRACTOR, INC.**  
CONTRACTOR  
MONTGOMERY, VERMONT

STATE OF VERMONT AGENCY OF TRANSPORTATION  
COUNTY OF WINDSOR

TOWN OF WAITSFIELD  
VT ROUTE 100 (MINOR ARTERIAL)  
BRIDGE NO.: 177 PROJECT NO.: BRP 013-4(39)

DATE: JAN. 12, 2016  
SCALE: NOTED  
CHKD: - DFTM: B.L.  
JOB NO: 23480-016  
DWG. NO: **PC3**

Vermont Agency of Transportation  
**RECEIVED**  
ON: **May 10, 2016**  
and Checked for  
**CONFORMANCE**  
BY: Rob Young DATE: 05/16/2016