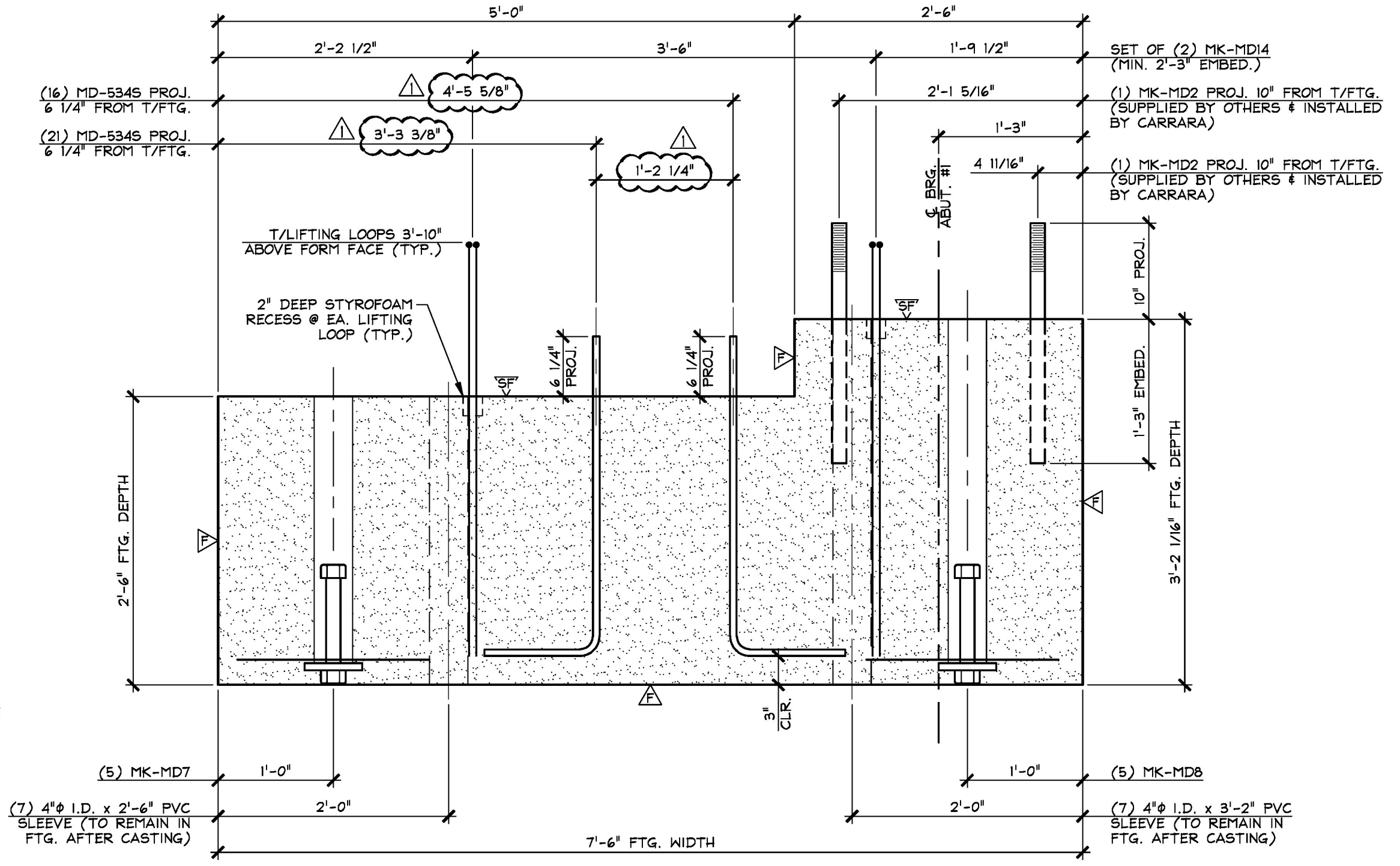
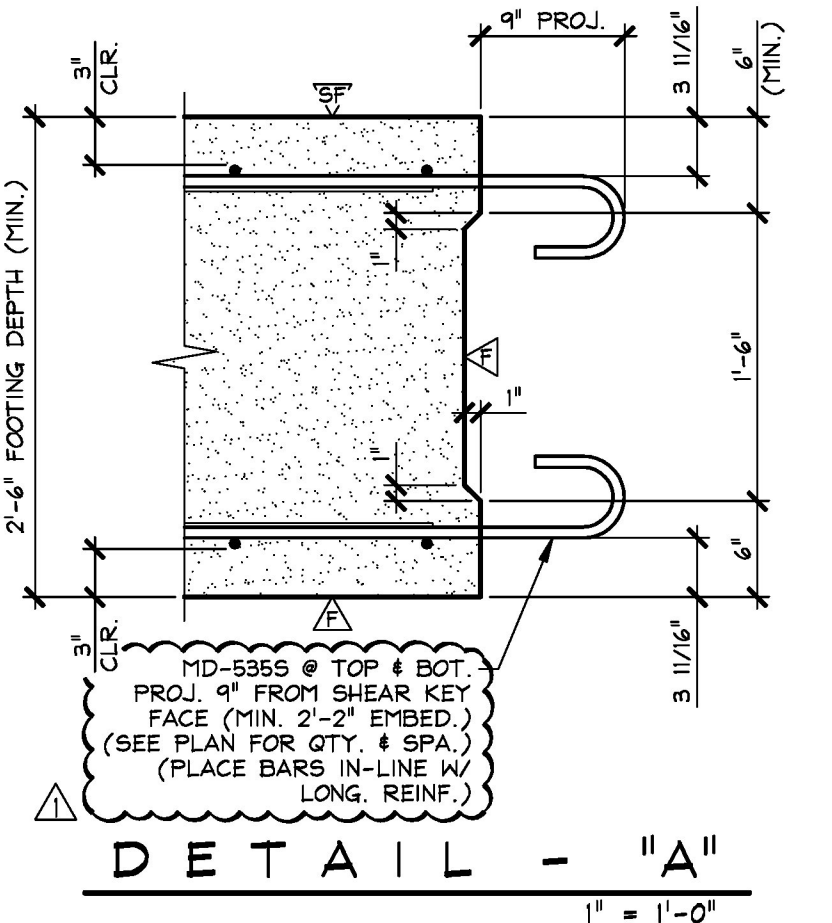


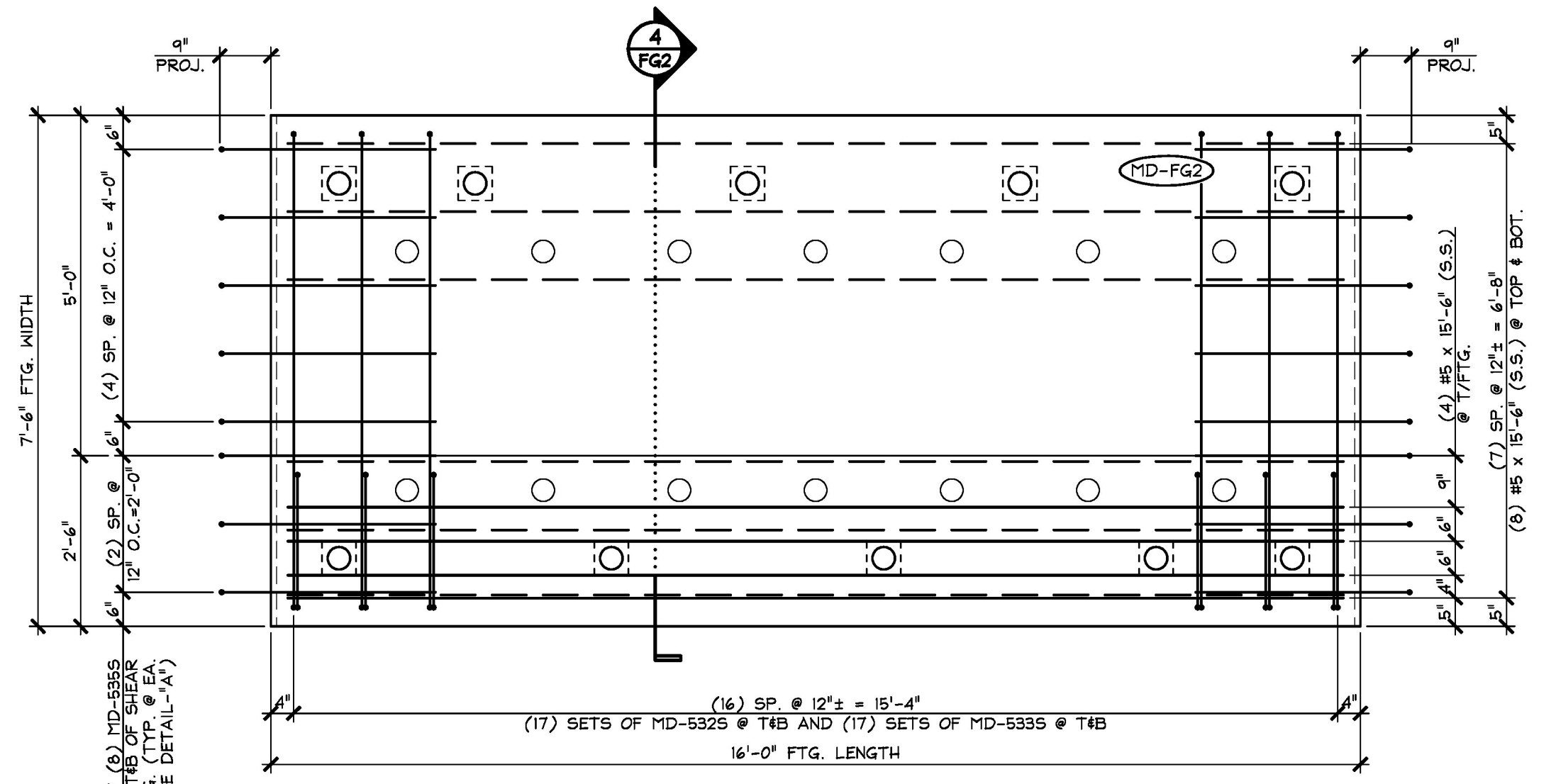
1 DIMENSIONAL PLAN VIEW IN FORM  
FG2 1/2" = 1'-0"



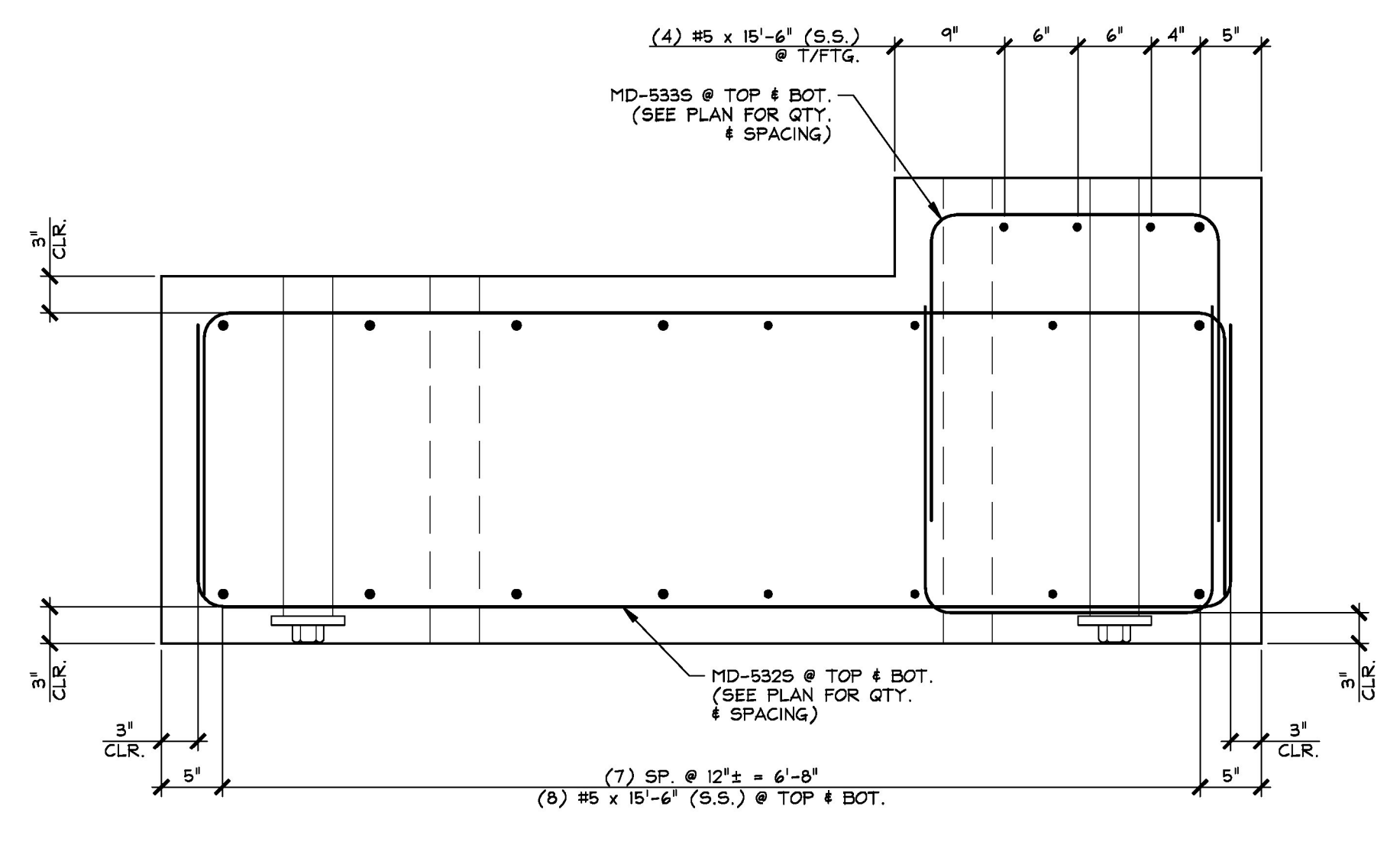
2 DIMENSIONAL SECTION  
FG2 1" = 1'-0"



DETAIL - "A" 1" = 1'-0"



3 REINFORCING PLAN VIEW IN FORM  
FG2 1/2" = 1'-0"



4 REINFORCING SECTION  
FG2 1" = 1'-0"

△ DENOTES FORM FINISH  
○ DENOTES SMOOTH FLOAT FINISH

**SHOP NOTE:**  
28-DAY STRENGTH = 7,000 PSI  
HANDLING STRENGTH = 5,500 PSI  
MIX #426M

MARK:	MD-FG2	QTY.:	1	WT.:	24.01 T	VOL.:	11.86 cy
MATERIAL LIST / FOOTING							
ITEM	MARK	DESCRIPTION				QTY.	
1	MD-5325	#5 BENT BAR (STAINLESS STEEL)				34	
2	MD-5335	#5 BENT BAR (STAINLESS STEEL)				34	
3	MD-5345	#5 BENT BAR (STAINLESS STEEL)				37	
4	MD-5355	#5 BENT BAR (STAINLESS STEEL)				32	
5		#5 x 15'-6" (STAINLESS STEEL)				20	
6							
7	MK-MD2	1 1/2" x 2'-1" SHEDGE ANCHOR BOLT W/ 5' THREADS (GALV.)				2	
8	MK-MD7	LEVELING JACK ASSEMBLY				5	
9	MK-MD8	LEVELING JACK ASSEMBLY				5	
10	MK-MD14	SET OF (2) 1/2" STRAND LIFTING LOOPS				4	
11		4" I.C. x 2'-6" PVC SLEEVE				7	
12		4" I.C. x 3'-2" PVC SLEEVE				7	
13							
14							
15							

Approved \_\_\_\_\_ X Approved As Noted \_\_\_\_\_  
Rejected \_\_\_\_\_

This review is only for general conformance with the design concept and the information given in the Construction Documents. Corrections or comments made on the shop drawings during the review do not relieve the Contractor from compliance with the requirements of the Plans and Specifications. Review of a specific item shall not include review of an assembly of which an item is a component. The Contractor is responsible for dimensions to be confirmed and corrected at the job site; information that pertains solely to the fabrication process or to the means, methods, techniques, sequences and procedures of construction; coordination of the Work with that of other trades and performing all Work in a safe and satisfactory manner.

Vermont Agency of Transportation  
**RECEIVED**  
ON: **May 10, 2016**  
and Checked for  
**CONFORMANCE**  
BY: Rob Young DATE: 05/18/2016

Date: 5/13/2016  
By: D. Kull  
McFarland Johnson

△ 5-10-16 REVISED AS NOTED

APPROVAL STAMP:

**J.P. CARRARA & SONS INC.**  
Precast & Prestress Manufacturer  
284 CASE ST., MIDDLEBURY, VERMONT 05753 Phone: (802)388-6361 Fax: (802)388-9010

**A.L. ST. ONGE CONTRACTOR, INC.**  
CONTRACTOR  
MONTGOMERY, VERMONT

STATE OF VERMONT AGENCY OF TRANSPORTATION  
COUNTY OF WINDSOR

TOWN OF WAITSFIELD  
VT ROUTE 100 (MINOR ARTERIAL)  
BRIDGE NO.: 177 PROJECT NO.: BRP 013-4(39)

DATE: JAN. 12, 2016  
SCALE: NOTED  
CHKD: - DFTM: B.L.  
JOB NO: 23480-016  
DWG. NO: **FG2**