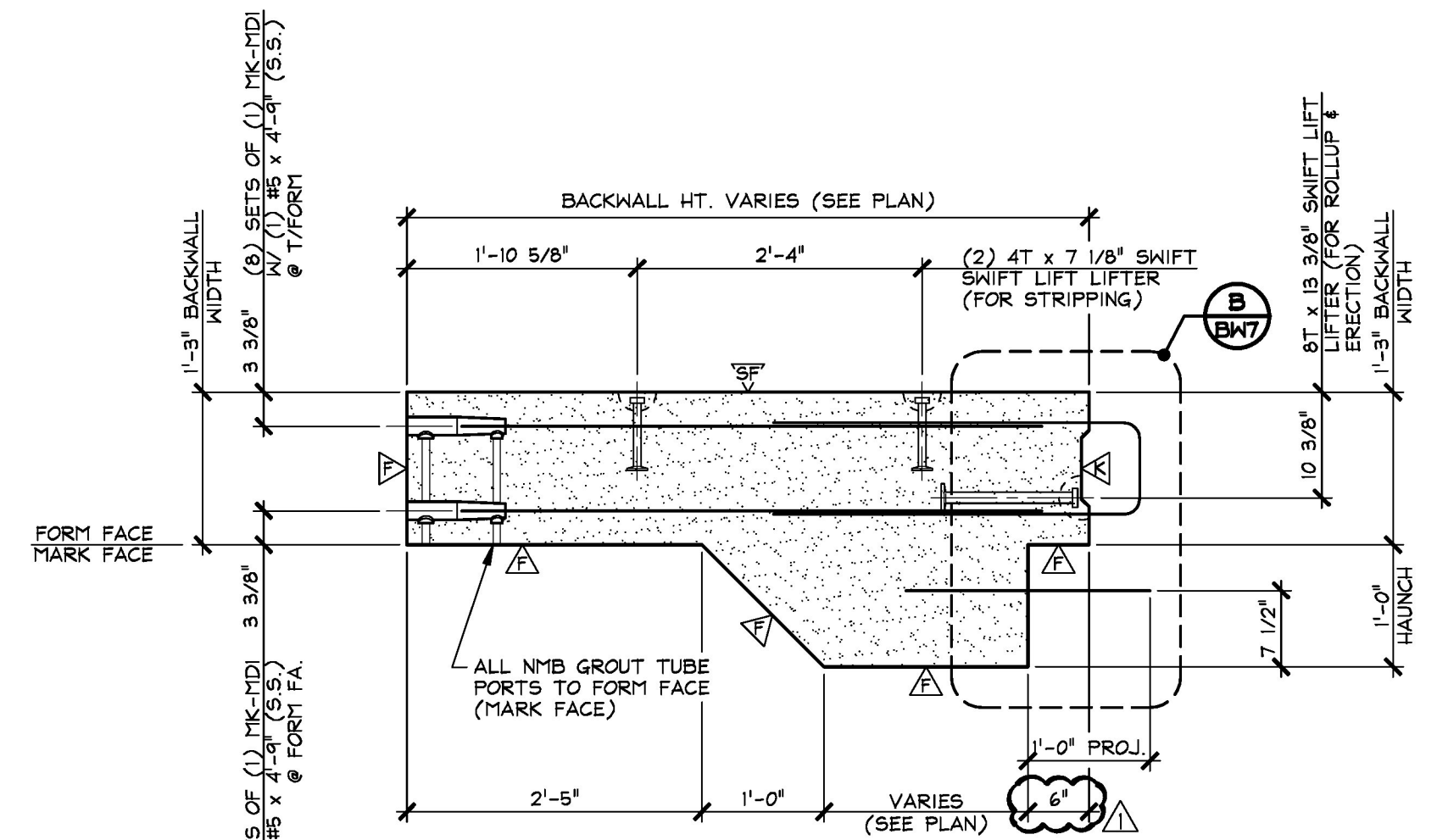
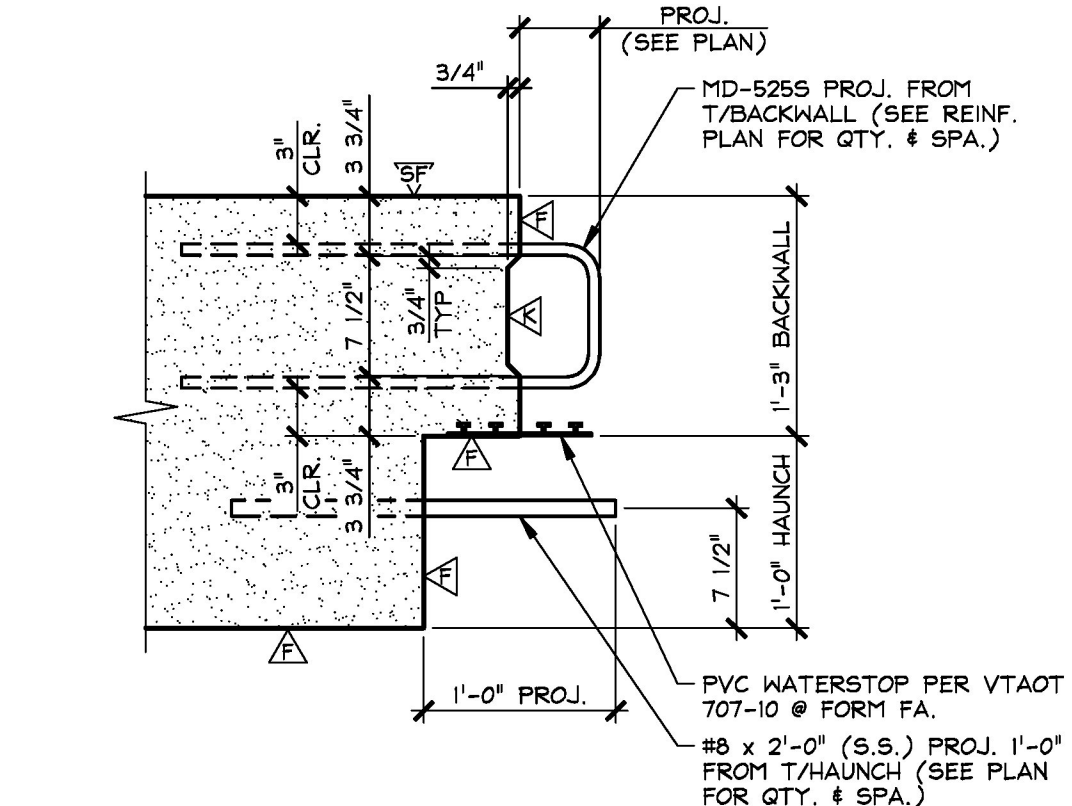


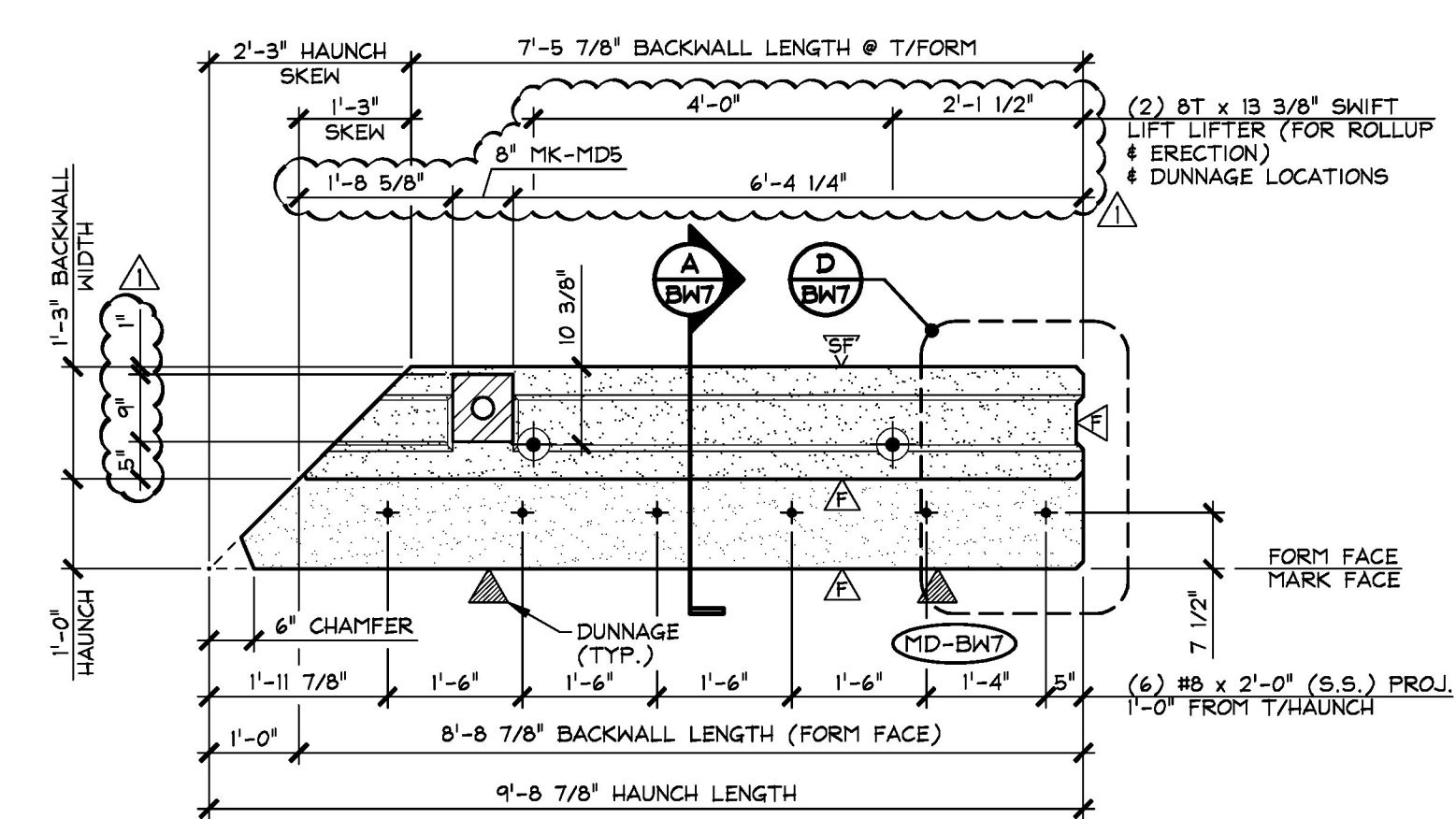
1 DIMENSIONAL PLAN VIEW IN FORM
BW7
1/2" = 1'-0"



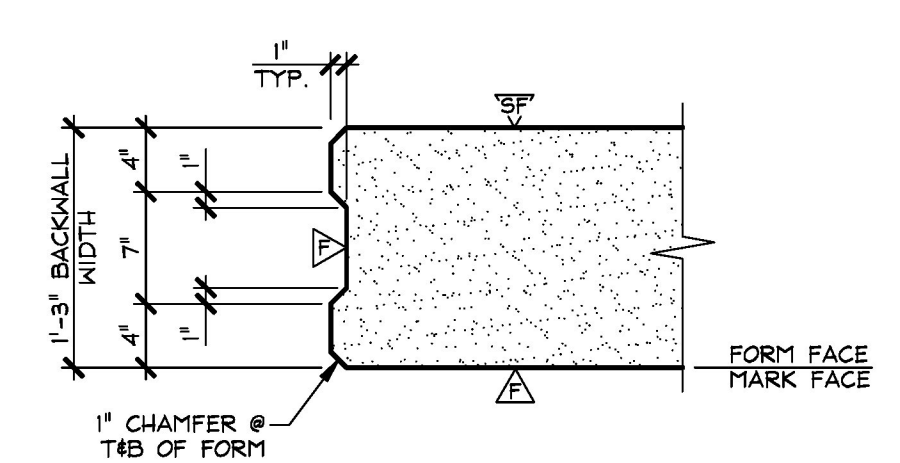
A DIMENSIONAL SECTION
BW7
3/4" = 1'-0"



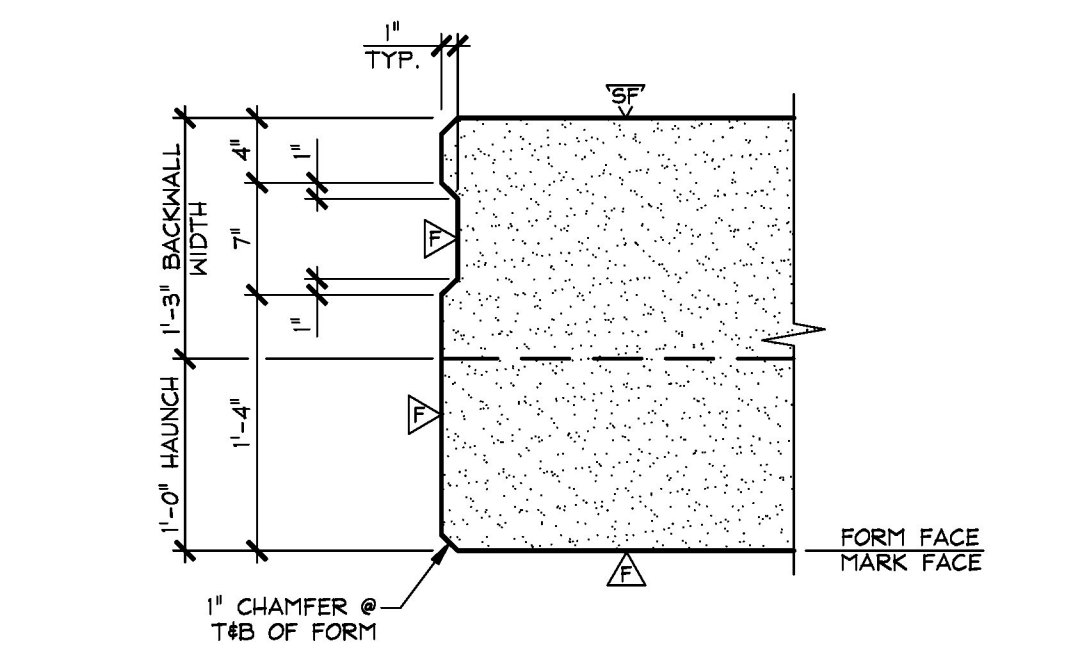
B TOP OF BACKWALL DETAIL
BW7
1" = 1'-0"



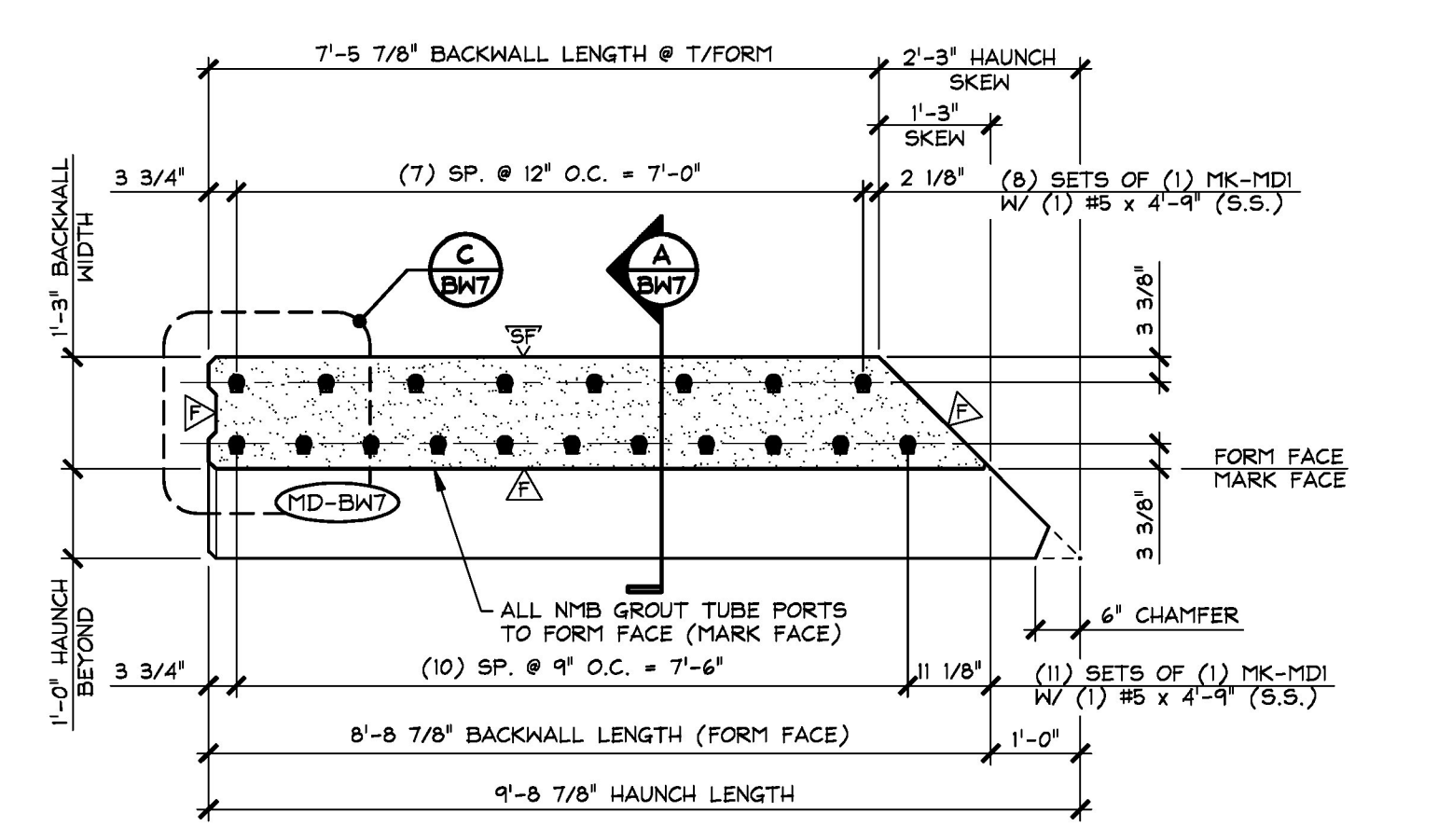
2 TOP OF BACKWALL ELEVATION
BW7
1/2" = 1'-0"



C VERTICAL SHEAR KEY DETAIL
BW7
1" = 1'-0"



D VERTICAL SHEAR KEY DETAIL AT HAUNCH
BW7
1" = 1'-0"



3 BOTTOM OF BACKWALL ELEVATION
BW7
1/2" = 1'-0"

△ DENOTES FORM FINISH
△ DENOTES SMOOTH FLOAT FINISH
△ DENOTES ROUGHENED SURFACE TO PROVIDE AN 1/8" AMPLITUDE EXPOSED AGGREGATE PROFILE. UTILIZE A SURFACE RETARDER WITH WATER BLAST, SAND BLAST, OR A COMBINATION OF BOTH TO ACHIEVE THE DESIRED SHEAR KEY SURFACE FINISH.

SHOP NOTE:
SEE DRAWING NO. "BW7.1" BACKWALL REINFORCING

SHOP NOTE:
28-DAY STRENGTH = 5,000 PSI
HANDLING STRENGTH = 3,500 PSI
MIX #445MSCC

MARK:	MD-BW7	QTY.:	1	WT.:	5.40 T	VOL.:	2.67 cy
MATERIAL LIST / BACKWALL							
ITEM	MARK	DESCRIPTION	QTY.				
1		#5 x 4'-9" (STAINLESS STEEL)	19				
2							
3		#8 x 2'-0" (STAINLESS STEEL)	6				
4							
5							
6							
7	MK-MDI	NMB SPLICE SLEEVE 5U-X(PG) (EPOXY COATED)	19				
8	MK-MDS	E 1/2" x 8" x 4" W/ ANCHORS (GALV.) (SUPPLIED BY OTHERS)	1				
9	MK-MDI7	DAYTON 7/8" F-42 LOOP FERRULE INSERT (GALV.)	1				
10							
11		P.V.C. WATERSTOP PER VTAOT 707-10 (SUPPLIED BY OTHERS)	8.75 LF				
12							
13		4T x 7 1/8" SWIFT LIFT LIFTER (GALV.)	4				
14		BT x 13 3/8" SWIFT LIFT LIFTER (GALV.)	2				
15							

Vermont Agency of Transportation
RECEIVED
ON: May 10, 2016
and Checked for
CONFORMANCE
BY: Rob Young DATE: 05/16/2016

Approved _____
Rejected _____

X Approved As Noted

This review is only for general conformance with the design concept and the information given in the Construction Documents. Corrections or comments made on the shop drawings during the review do not relieve the Contractor from compliance with the requirements of the Plans and Specifications. Review of a specific item shall not include review of an assembly of which an item is a component. The Contractor is responsible for dimensions to be confirmed and corrected at the job site; information that pertains solely to the fabrication process or to the means, methods, techniques, sequences and procedures of construction; coordination of the Work with that of other trades and performing all Work in a safe and satisfactory manner.

Date: 5/13/2016
By: D. Kull
McFarland Johnson

5-10-16 REVISED AS NOTED

APPROVAL STAMP:

J.P. CARRARA & SONS INC.
Precast & Prestress Manufacturer
2464 CASE STR., MIDDLEBURY, VERMONT 05753 Phone: (802)388-6361 Fax: (802)388-9010

A.L. ST. ONGE CONTRACTOR, INC.
CONTRACTOR
MONTGOMERY, VERMONT

STATE OF VERMONT AGENCY OF TRANSPORTATION
COUNTY OF WINDSOR

TOWN OF WAITSFIELD
VT ROUTE 100 (MINOR ARTERIAL)
BRIDGE NO.: 177 PROJECT NO.: BRP 013-4(39)

PRECAST BACKWALL DIMENSIONAL DETAILS

DATE: JAN. 12, 2016
SCALE: NOTED
CHKD: - DFTM: B.L.
JOB NO: 23480-016
DWG. NO: BW7