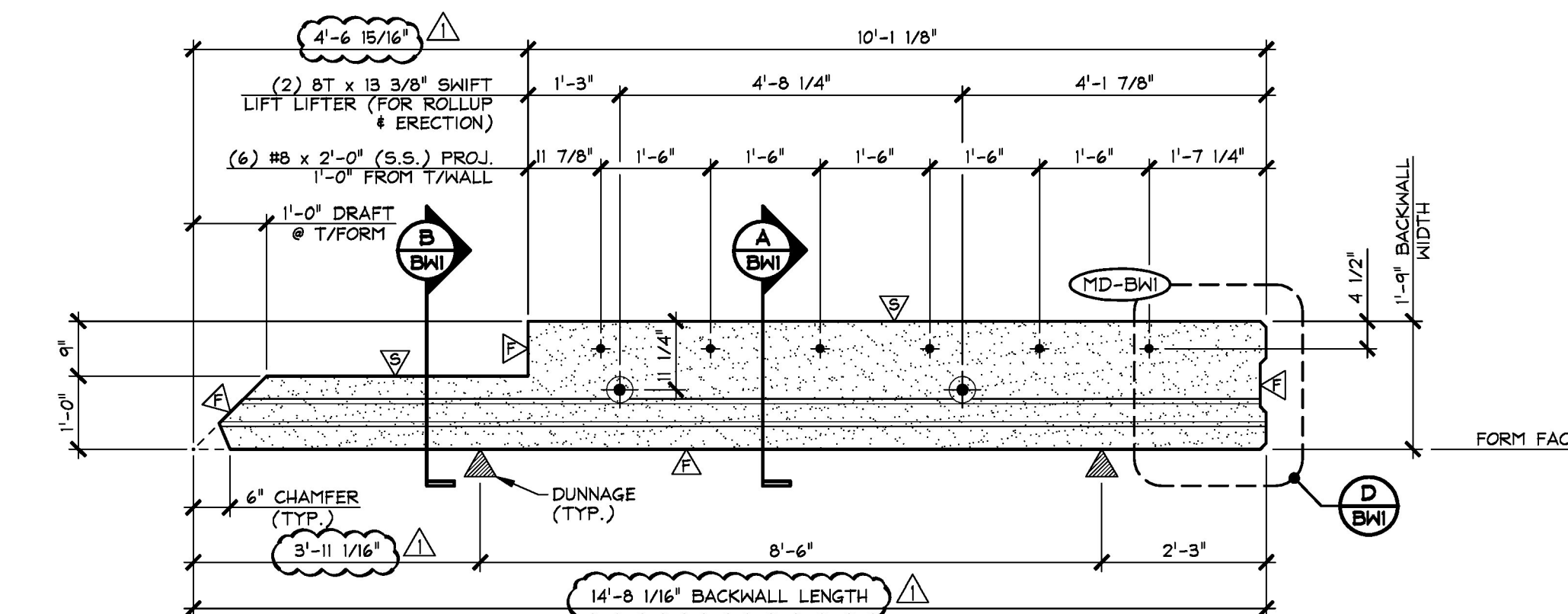
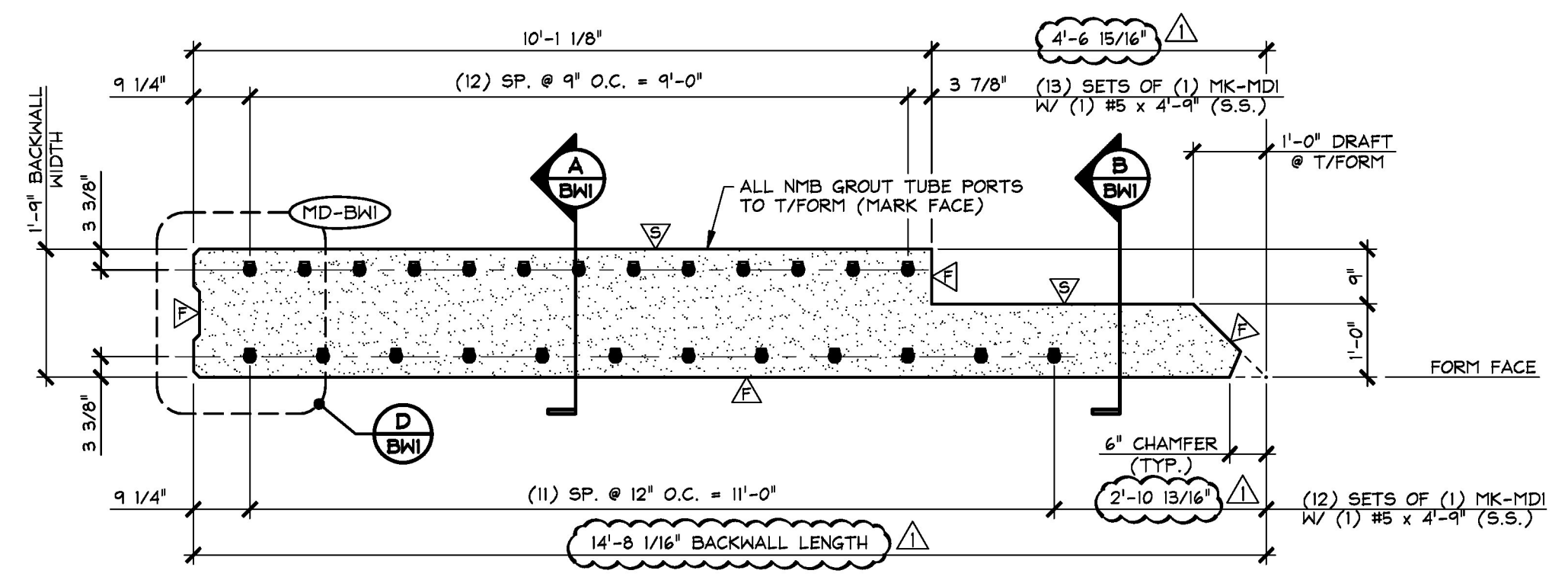


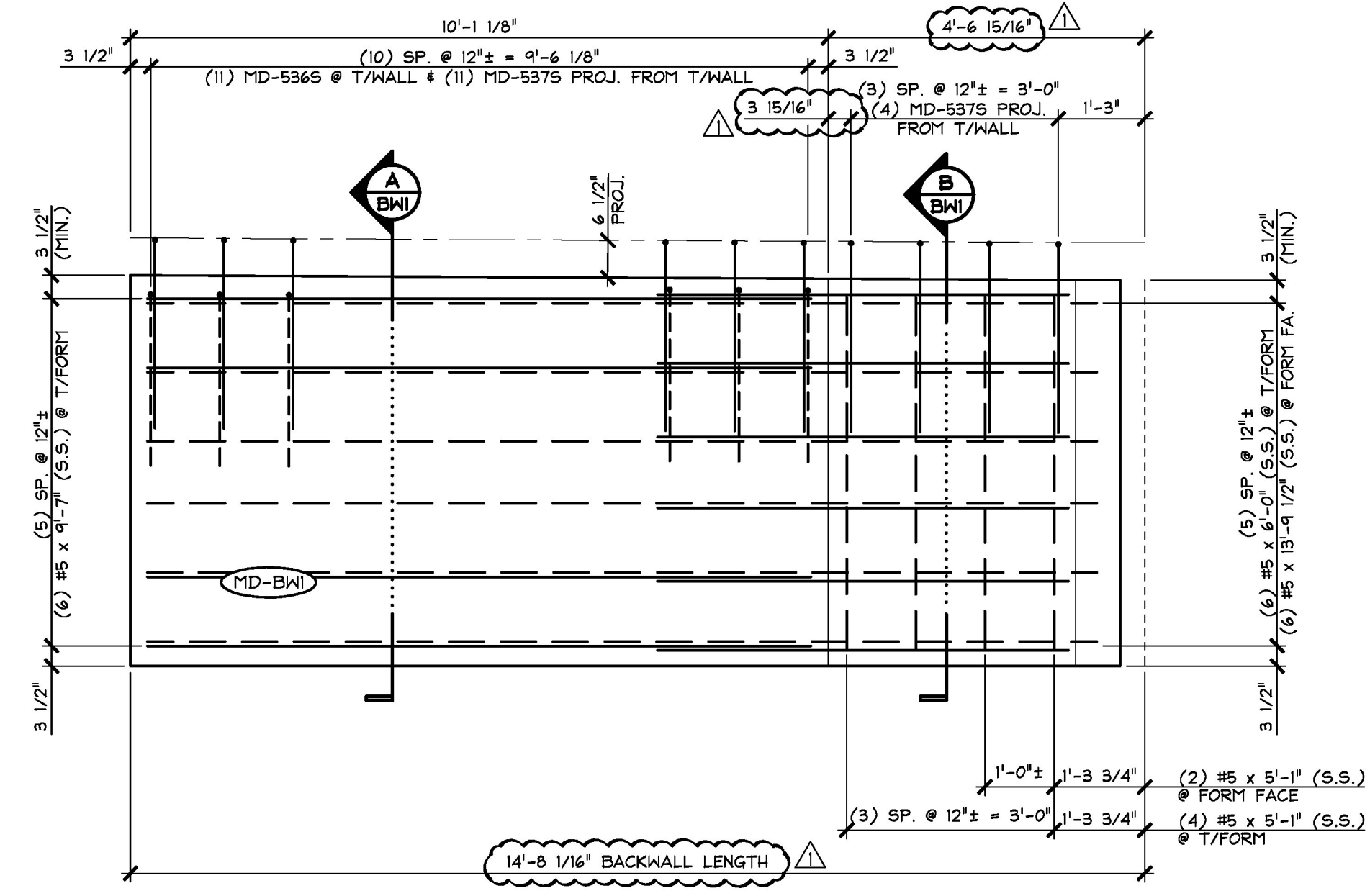
1 DIMENSIONAL PLAN VIEW IN FORM
 BWI 1/2" = 1'-0"



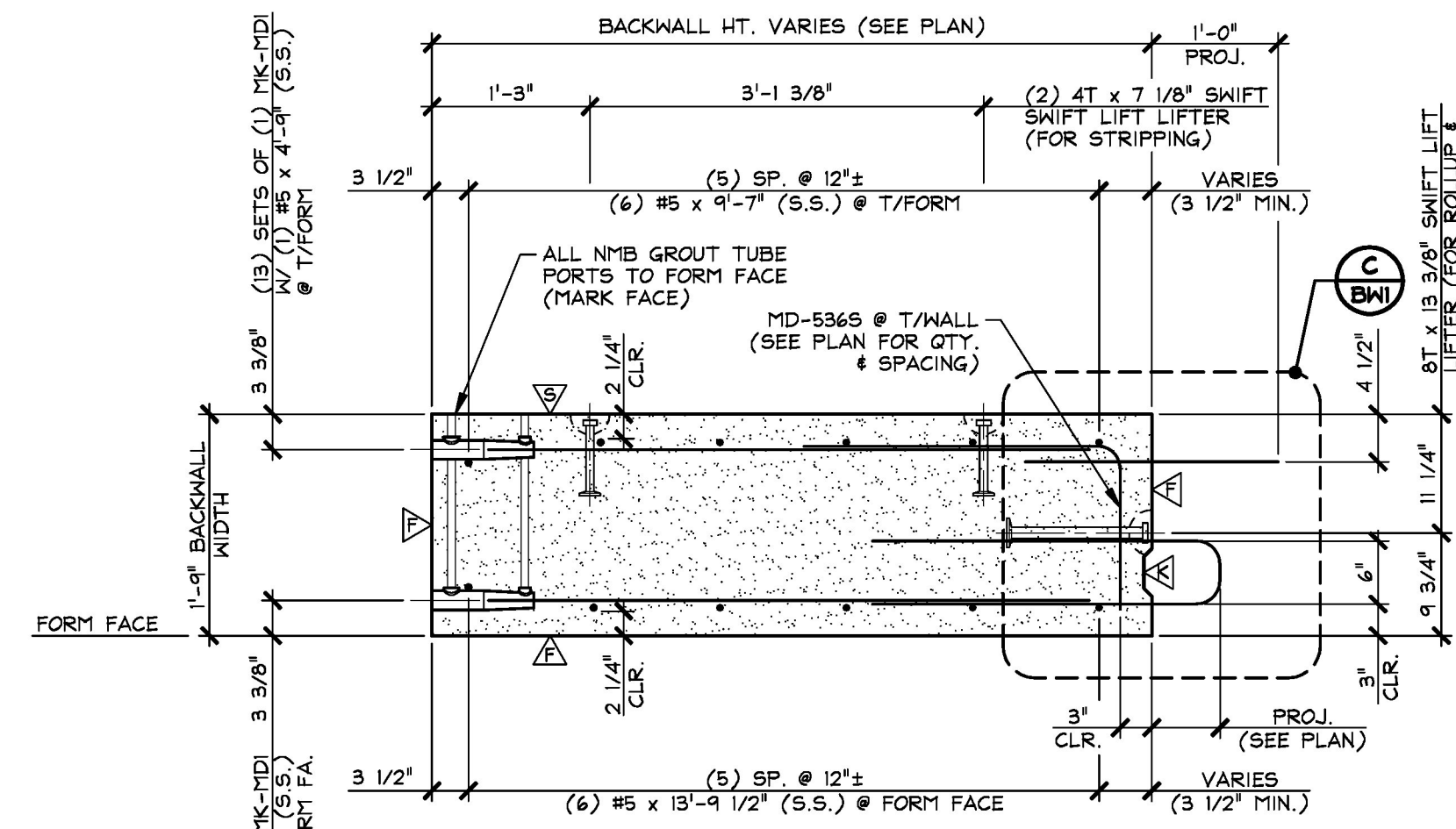
2 TOP OF BACKWALL ELEVATION
 BWI 1/2" = 1'-0"



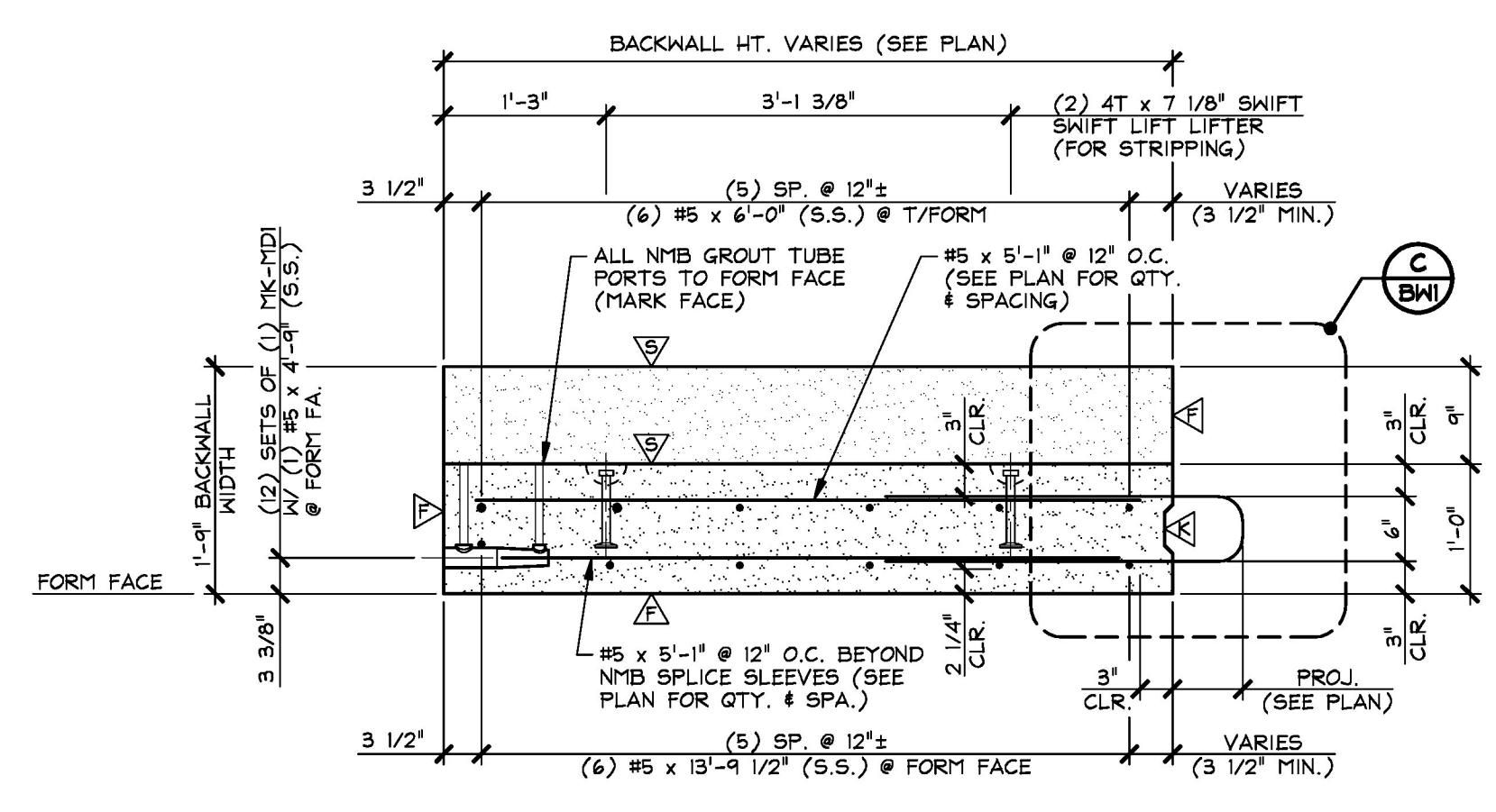
3 BOTTOM OF BACKWALL ELEVATION
 BWI 1/2" = 1'-0"



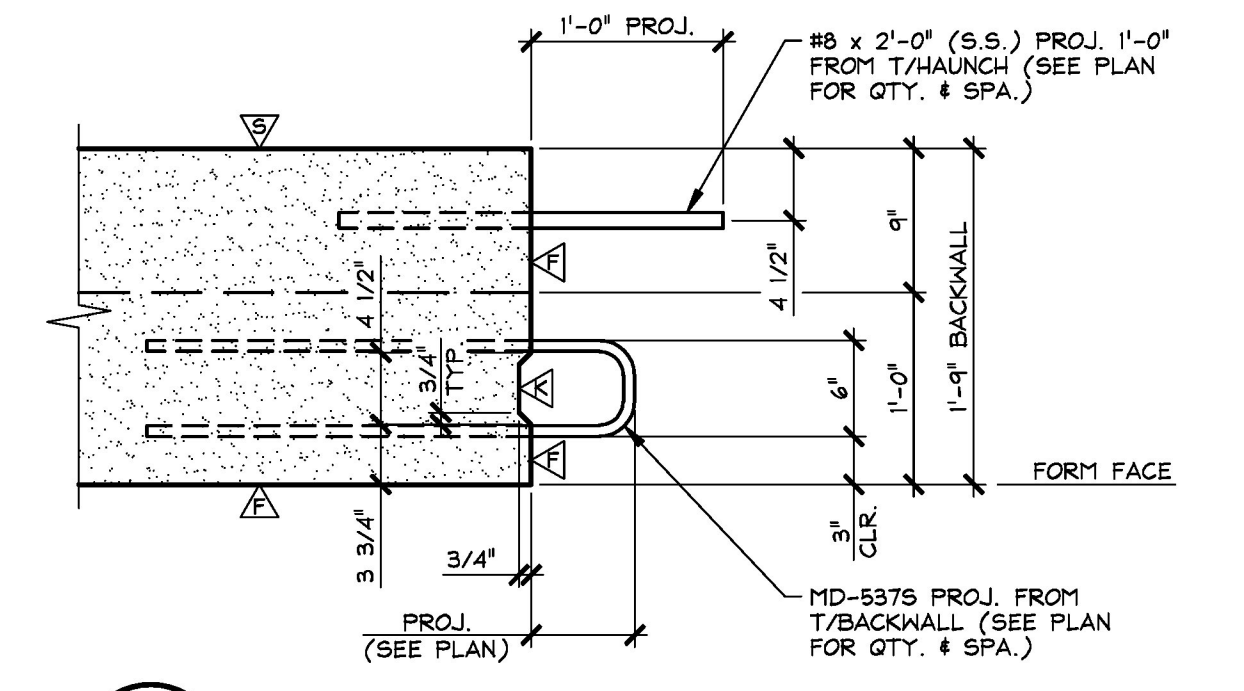
4 REINFORCING PLAN VIEW IN FORM
 BWI 1/2" = 1'-0"



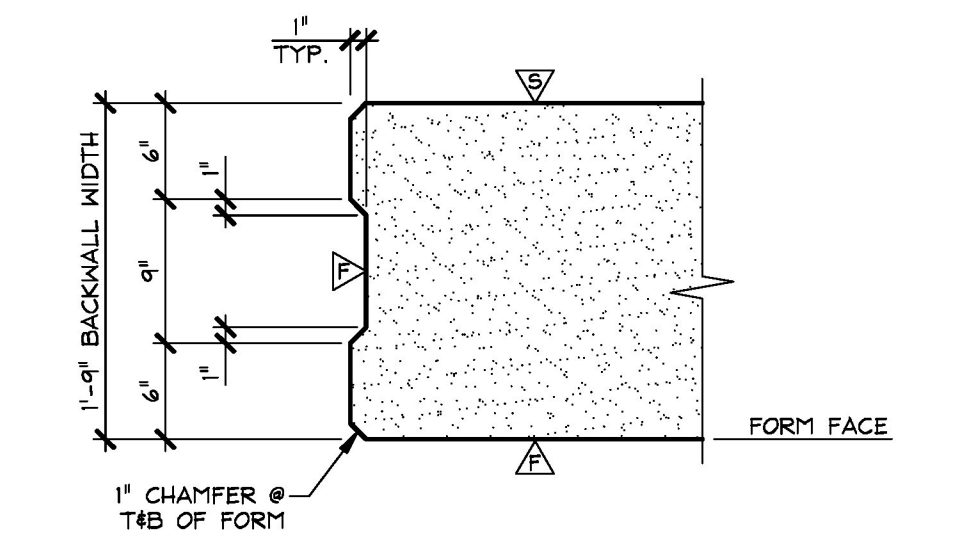
A BACKWALL SECTION
 BWI 3/4" = 1'-0"



B BACKWALL SECTION
 BWI 3/4" = 1'-0"



C TOP OF BACKWALL DETAIL
 BWI 1" = 1'-0"



D VERTICAL SHEAR KEY DETAIL
 BWI 1" = 1'-0"

△ DENOTES FORM FINISH
 △ DENOTES SMOOTH SCREED FINISH
 △ DENOTES ROUGHENED SURFACE TO PROVIDE AN 1/8" AMPLITUDE EXPOSED AGGREGATE PROFILE. UTILIZE A SURFACE RETARDER WITH WATER BLAST, SAND BLAST, OR A COMBINATION OF BOTH TO ACHIEVE THE DESIRED SHEAR KEY SURFACE FINISH.

SHOP NOTE:
 28-DAY STRENGTH = 5,000 PSI
 HANDLING STRENGTH = 3,500 PSI
 MIX #445M5CC

MARK:	MD-BWI	QTY.:	1	WT.:	9.13 T	VOL.:	4.51 cy
MATERIAL LIST / BACKWALL							
ITEM	MARK	DESCRIPTION	QTY.				
1	MD-5365	#5 BENT BAR (STAINLESS STEEL)	11				
2	MD-5375	#5 BENT BAR (STAINLESS STEEL)	15				
3		#5 x 4'-9" (STAINLESS STEEL)	25				
4		#5 x 5'-1" (STAINLESS STEEL)	6				
5		#5 x 6'-0" (STAINLESS STEEL)	6				
6		#5 x 9'-7" (STAINLESS STEEL)	6				
7		#5 x 13'-9 1/2" (STAINLESS STEEL)	6				
8							
9		#8 x 2'-0" (STAINLESS STEEL)	6				
10							
11							
12	MK-MDI	NMB SPLICE SLEEVE 5U-X(PG) (EPOXY COATED)	25				
13							
14							
15							
16							
17		4T x 7 1/8" SWIFT LIFT LIFTER (GALV.)	4				
18		8T x 13 3/8" SWIFT LIFT LIFTER (GALV.)	2				
19							
20							

Vermont Agency of Transportation
RECEIVED
 ON: May 10, 2016
 and Checked for
CONFORMANCE
 BY: Rob Young DATE: 05/16/2016

Approved _____
 Rejected _____

Approved As Noted _____

This review is only for general conformance with the design concept and the information given in the Construction Documents. Corrections or comments made on the shop drawings during the review do not relieve the Contractor from compliance with the requirements of the Plans and Specifications. Review of a specific item shall not include review of an assembly of which an item is a component. The Contractor is responsible for dimensions to be confirmed and corrected at the job site; information that pertains solely to the fabrication process or to the means, methods, techniques, sequences and procedures of construction; coordination of the Work with that of other trades and performing all Work in a safe and satisfactory manner.

Date: 5/13/2016
 By: D. Kull

△ 5-10-16 REVISED AS NOTED

APPROVAL STAMP:

J.P. CARRARA & SONS INC. Precast & Prestress Manufacturer 2464 CASE STR., MIDDLEBURY, VERMONT 05753 Phone: (802)388-6361 Fax: (802)388-9010	A.L. ST. ONGE CONTRACTOR, INC. CONTRACTOR MONTGOMERY, VERMONT
	STATE OF VERMONT AGENCY OF TRANSPORTATION COUNTY OF WINDSOR
TOWN OF WAITSFIELD VT ROUTE 100 (MINOR ARTERIAL) BRIDGE NO.: 177 PROJECT NO.: BRP 013-4(39)	CHKD: - DFTM: B.L. JOB NO: 23480-016
PRECAST BACKWALL DETAILS	DWG. NO: BWI