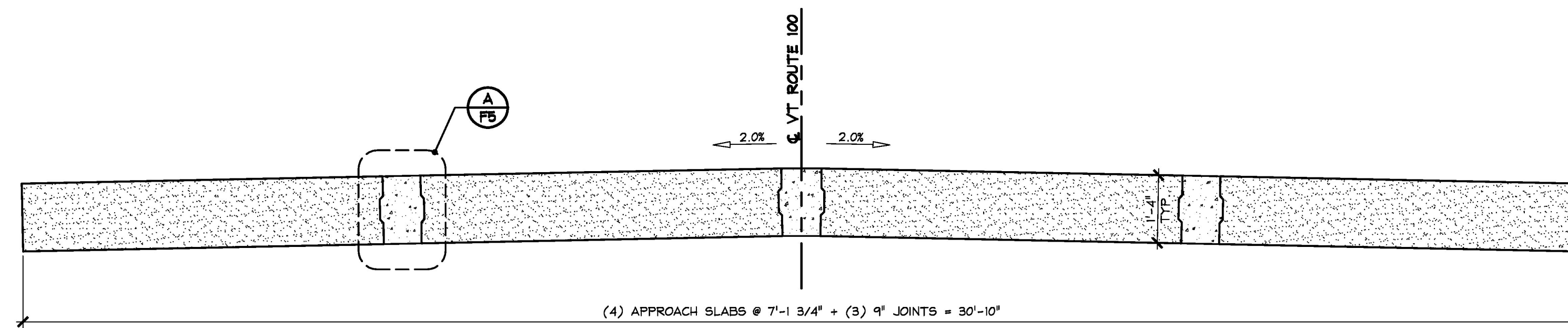
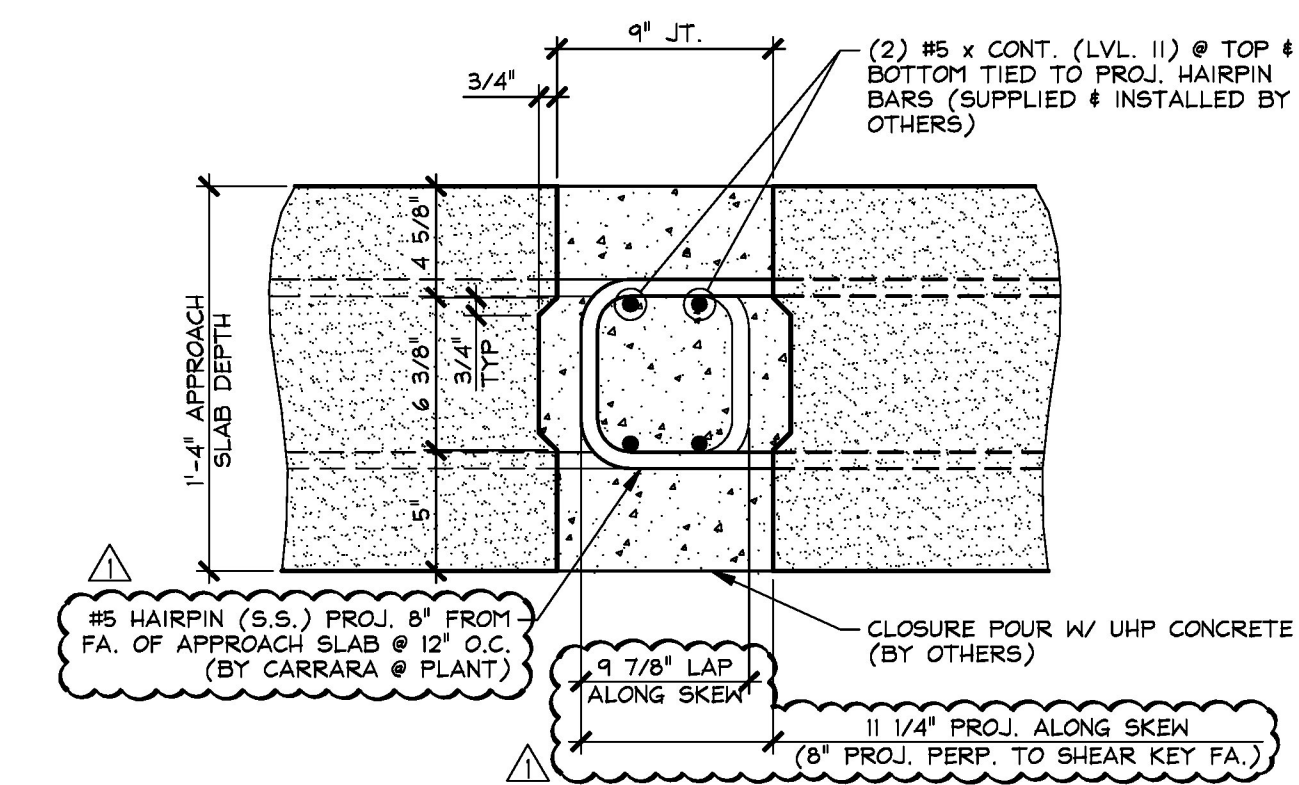


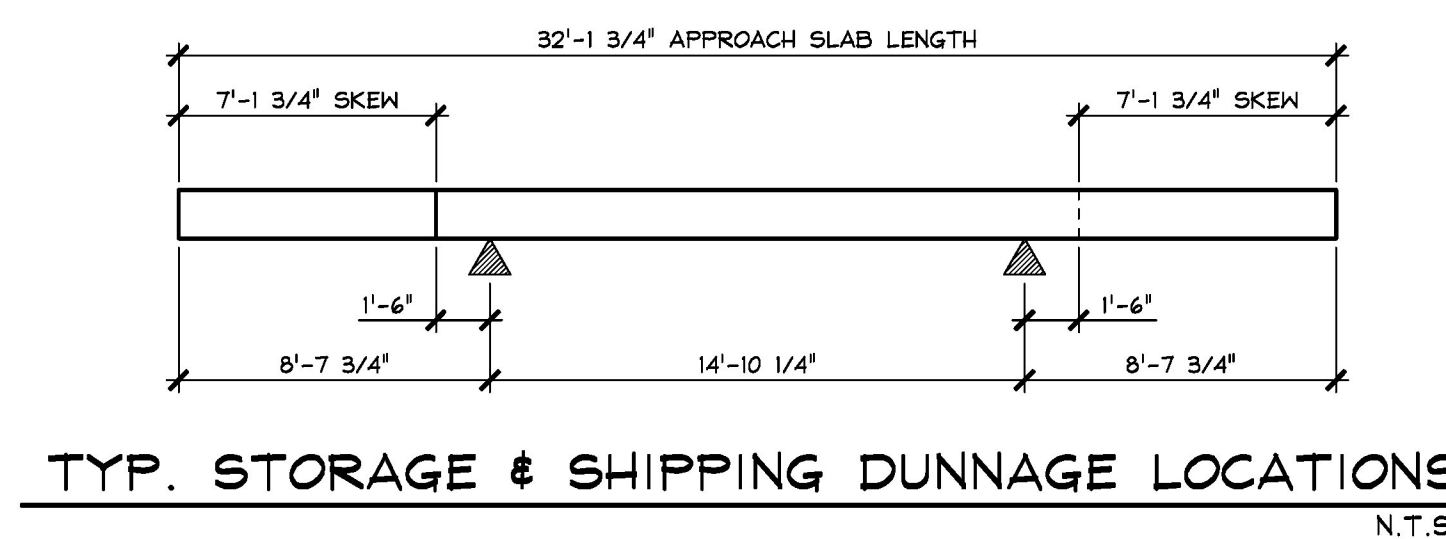
1 PRECAST APPROACH SLAB LAYOUT  
1/8" = 1'-0"



2 APPROACH SLAB TRANSVERSE SECTION  
1/2" = 1'-0"



A SHEAR KEY SECTION @  
F5 APPROACH SLABS  
1 1/2" = 1'-0"



**APPROACH SLAB GENERAL NOTES**

- MIN. CONCRETE STRENGTH AT 28 DAYS SHALL BE 5,000 PSI.
- MIN. CONCRETE STRENGTH FOR HANDLING SHALL BE 3,500 PSI (UNLESS NOTED OTHERWISE).
- REINFORCING STEEL SHALL BE GR-520, ASTM A995 M, STAINLESS STEEL (2304 DUPLEX UNS-S32304) (AS NOTED ON SHOP DRAWINGS).
- THE TOP OF APPROACH SLABS SHALL RECEIVE A SMOOTH SCREED FINISH (UNLESS NOTED OTHERWISE).
- APPROACH SLABS SHALL BE HANDLED AND ERECTED USING THE LIFTING INSERTS ONLY. THE MINIMUM SLING ANGLE FROM THE HORIZONTAL SHALL BE 60°. APPROACH SLABS SHALL BE STORED & TRANSPORTED WITH TIMBER SUPPORTS AT 5th POINTS, UNLESS APPROVED BY J.P. CARRARA & SONS, INC.
- MATERIAL SPECIFICATION AND MIX DESIGN SHALL CONFORM TO VERMONT SPEC. P540.02 AND P540.05 RESPECTIVELY.  
DESIGN MIX: J.P.C. BRIDGE MIX #445MSCC
- QUALITY CONTROL PROCEDURES ARE IN ACCORDANCE WITH PCI & VAOT REQUIREMENTS. J.P. CARRARA & SONS, INC. IS A PCI CERTIFIED PLANT.
- CURING METHOD: AS SOON AS THE TOP OF APPROACH SLAB IS FINISHED, A COVER OF POLY WILL BE PLACED OVER THE APPROACH SLAB. NATURAL CURE WITH NO EXTERNAL HEAT APPLIED. UNITS SHALL NOT BE EXPOSED TO TEMPERATURE DIFFERENTIAL GREATER THAN 40°F. UNITS SHALL NOT BE EXPOSED TO A TEMPERATURE LESS THAN 36°F UNTIL DESIGN STRENGTH IS ACHIEVED.
- SHEAR KEY SURFACES SHALL BE ROUGHENED TO PROVIDE AN 1/8" AMPLITUDE EXPOSED AGGREGATE PROFILE. FABRICATOR MAY UTILIZE A SURFACE RETARDER WITH WATER BLAST, SAND BLAST, OR A COMBINATION OF BOTH TO ACHIEVE THE DESIRED SHEAR KEY SURFACE FINISH.
- DUNNAGE IS LOCATED AS NOTED ON DRAWINGS (THIS SHEET).

Approved  
 Rejected  
 Approved As Noted

This review is only for general conformance with the design concept and the information given in the Construction Documents. Corrections or comments made on the shop drawings during the review do not relieve the Contractor from compliance with the requirements of the Plans and Specifications. Review of a specific item shall not include review of an assembly of which an item is a component. The Contractor is responsible for dimensions to be confirmed and corrected at the job site; information that pertains solely to the fabrication process or to the means, methods, techniques, sequences and procedures of construction; coordination of the Work with that of other trades and performing all Work in a safe and satisfactory manner.

Vermont Agency of Transportation  
**RECEIVED**  
 ON: May 10, 2016  
 and Checked for  
**CONFORMANCE**  
 BY: Rob Young DATE: 05/18/2016

Date: 5/13/2016  
 By: D. Kull  
**McFarland Johnson**

5-10-16 REVISED AS NOTED

APPROVAL STAMP:	<b>J.P. CARRARA &amp; SONS INC.</b> Precast & Prestress Manufacturer 2464 CASE ST., MIDDLEBURY, VERMONT 05753 Phone: (802)388-6361 Fax: (802)388-9010	<b>A.L. ST. ONGE CONTRACTOR, INC.</b> CONTRACTOR MONTGOMERY, VERMONT
	STATE OF VERMONT AGENCY OF TRANSPORTATION COUNTY OF WINDSOR	
	TOWN OF WAITSFIELD VT ROUTE 100 (MINOR ARTERIAL) BRIDGE NO.: 177 PROJECT NO.: BRP 013-4(39)	
	<b>PRECAST APPROACH SLAB LAYOUT &amp; DETAILS</b>	
	DATE: JAN. 12, 2016	SCALE: NOTED
	CHKD: -	DFTM: B.L.
	JOB NO: 23480-016	DWG. NO: <b>F5</b>