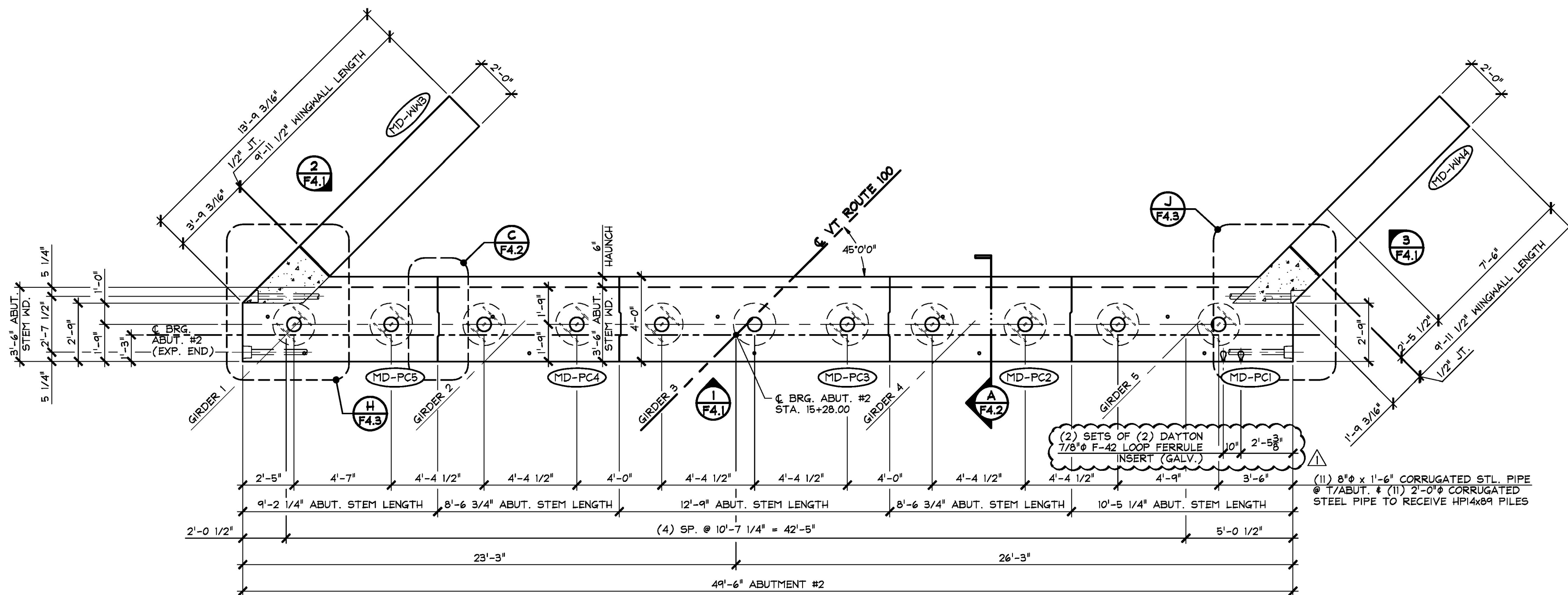
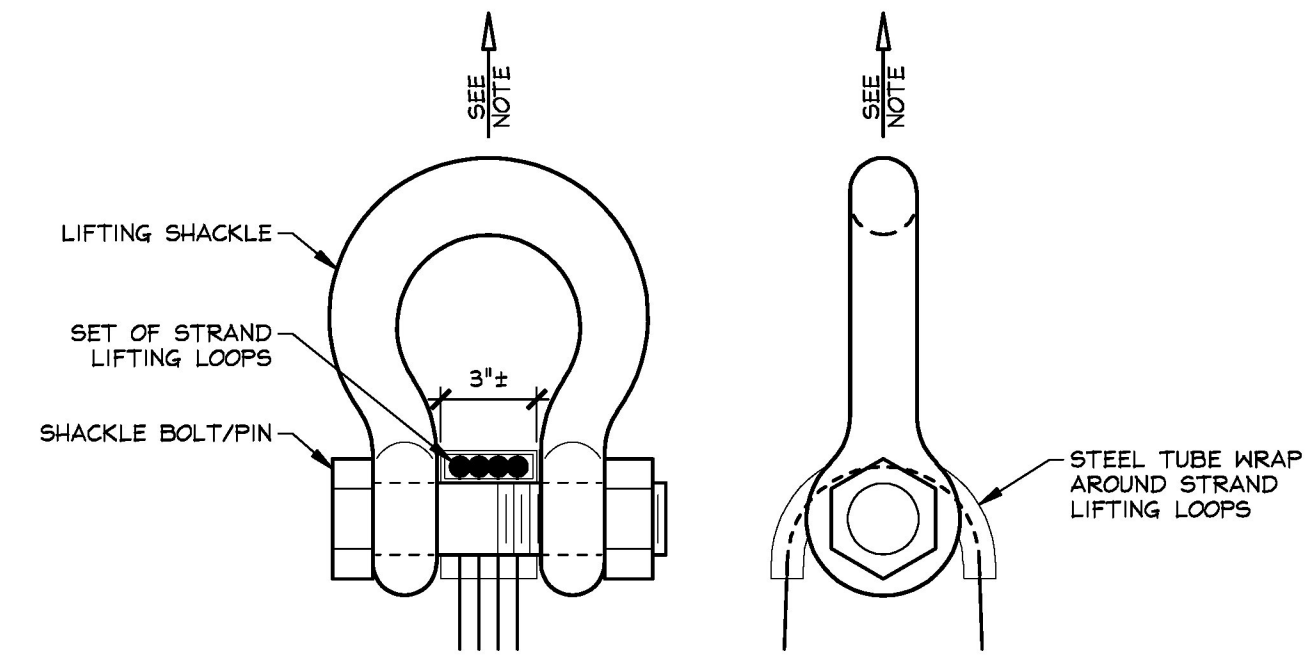


1 ABUTMENT #2 - BACKWALL & WINGWALL LAYOUT
 1/4" = 1'-0"



2 ABUTMENT #2 - ABUTMENT & WINGWALL LAYOUT
 1/4" = 1'-0"



LIFTING SHACKLE DETAILS
 PRECAST ABUTMENT STEMS N.T.S.

NOTE: PRECAST ABUTMENT STEMS SHALL BE HANDLED AND ERECTED USING THE LIFTING LOOPS ONLY. RIGGING SHALL BE CONFIGURED SUCH THAT EQUAL FORCES ARE APPLIED TO EACH SET OF LIFTING LOOPS AT EACH END OF PRECAST ABUTMENT STEM. SHACKLE BOLT/PIN SHALL BE PLACED UNDER LIFT LOOPS AS SHOWN. DESIGN AND CONFIGURATION OF RIGGING BY PURCHASER.

ABUTMENT STEM GENERAL NOTES

- MIN. CONCRETE STRENGTH AT 28 DAYS SHALL BE 5,000 PSI.
- MIN. CONCRETE STRENGTH FOR HANDLING SHALL BE 3,500 PSI (UNLESS NOTED OTHERWISE).
- REINFORCING STEEL SHALL BE GR-520, ASTM A955 M, STAINLESS STEEL (2304 DUPLEX UNS-S32304) (AS NOTED ON SHOP DRAWINGS).
- THE TOP OF ABUTMENTS SHALL RECEIVE A RAKE FINISH ROUGHENED TO 1/4" AMPLITUDE (UNLESS NOTED OTHERWISE).
- ABUTMENTS SHALL BE HANDLED AND ERECTED USING THE LIFTING LOOPS & INSERTS ONLY. RIGGING SHALL BE CONFIGURED SUCH THAT EQUAL AND VERTICAL FORCES ARE APPLIED TO EACH OF THE LIFTING LOOPS AT EACH END OF THE ABUTMENT. THE PINS OF THE SHACKLES SHALL BE PLACED THROUGH THE LIFTING LOOPS. SEE DETAIL, THIS SHEET. ABUTMENTS SHALL BE STORED AND TRANSPORTED WITH TIMBER SUPPORTS WITHIN 2'-0" OF THE ABUTMENT ENDS, UNLESS APPROVED BY J.P. CARRARA & SONS, INC.
- MATERIAL SPECIFICATION AND MIX DESIGN SHALL CONFORM TO VERMONT SPEC. P540.02 AND P540.05 RESPECTIVELY.
 DESIGN MIX: J.P.C. BRIDGE MIX #446M5CC
- QUALITY CONTROL PROCEDURES ARE IN ACCORDANCE WITH PCI & VAOT REQUIREMENTS. J.P. CARRARA & SONS, INC. IS A PCI CERTIFIED PLANT.
- CURING METHOD: AS SOON AS THE TOP OF ABUTMENT IS FINISHED, A COVER OF POLY WILL BE PLACED OVER THE ABUTMENT. NATURAL CURE WITH NO EXTERNAL HEAT APPLIED. AMBIENT ENCLOSURE TEMPERATURE SHALL BE MONITORED. UNITS SHALL NOT BE EXPOSED TO TEMPERATURE DIFFERENTIAL GREATER THAN 40°F. UNITS SHALL NOT BE EXPOSED TO A TEMPERATURES LESS THAN 36°F UNTIL DESIGN STRENGTH IS ACHIEVED.
- ABUTMENT POST-TENSIONING SEQUENCE:
 - ERECT PRECAST CONCRETE ABUTMENTS, AND POST-TENSION CENTER TENDON TO APPROXIMATELY 5,000 LBS.
 - GROUT SHEAR KEY.
 - ONCE SHEAR KEY GROUT HAS ATTAINED A MINIMUM COMPRESSIVE STRENGTH OF 3,000 PSI; POST-TENSION TENDONS TO 32,000 LBS.
- DUNNAGE IS LOCATED AS NOTED ON DRAWINGS.

WING WALL GENERAL NOTES

- MIN. CONCRETE STRENGTH AT 28 DAYS SHALL BE 5,000 PSI.
- MIN. CONCRETE STRENGTH FOR HANDLING SHALL BE 3,500 PSI (UNLESS NOTED OTHERWISE).
- REINFORCING STEEL SHALL BE GR-520, ASTM A955 M, STAINLESS STEEL (2304 DUPLEX UNS-S32304) (AS NOTED ON SHOP DRAWINGS).
- THE TOP OF WING WALLS SHALL RECEIVE A SMOOTH SCREED FINISH (UNLESS NOTED OTHERWISE).
- WING WALLS SHALL BE HANDLED AND ERECTED USING THE LIFTING INSERTS ONLY. THE MINIMUM SLING ANGLE FROM THE HORIZONTAL SHALL BE 60°. WING WALLS SHALL BE STORED & TRANSPORTED WITH TIMBER SUPPORTS AT 5th POINTS, UNLESS APPROVED BY J.P. CARRARA & SONS, INC.
- MATERIAL SPECIFICATION AND MIX DESIGN SHALL CONFORM TO VERMONT SPEC. P540.02 AND P540.05 RESPECTIVELY.
 DESIGN MIX: J.P.C. BRIDGE MIX #446M5CC
- QUALITY CONTROL PROCEDURES ARE IN ACCORDANCE WITH PCI & VAOT REQUIREMENTS. J.P. CARRARA & SONS, INC. IS A PCI CERTIFIED PLANT.
- CURING METHOD: AS SOON AS THE TOP OF WING WALL IS FINISHED, A COVER OF POLY WILL BE PLACED OVER THE WING WALL. NATURAL CURE WITH NO EXTERNAL HEAT APPLIED. UNITS SHALL NOT BE EXPOSED TO TEMPERATURE DIFFERENTIAL GREATER THAN 40°F. UNITS SHALL NOT BE EXPOSED TO A TEMPERATURES LESS THAN 36°F UNTIL DESIGN STRENGTH IS ACHIEVED.
- DUNNAGE IS LOCATED AS NOTED ON DRAWINGS.

BACKWALL GENERAL NOTES

- MIN. CONCRETE STRENGTH AT 28 DAYS SHALL BE 5,000 PSI.
- MIN. CONCRETE STRENGTH FOR HANDLING SHALL BE 3,500 PSI (UNLESS NOTED OTHERWISE).
- REINFORCING STEEL SHALL BE GR-520, ASTM A955 M, STAINLESS STEEL (2304 DUPLEX UNS-S32304) (AS NOTED ON SHOP DRAWINGS).
- THE TOP OF BACKWALL SHALL RECEIVE A SMOOTH FLOAT FINISH (UNLESS NOTED OTHERWISE).
- BACKWALLS SHALL BE HANDLED AND ERECTED USING THE LIFTING INSERTS ONLY. THE MINIMUM SLING ANGLE FROM THE HORIZONTAL SHALL BE 60°. BACKWALLS SHALL BE STORED & TRANSPORTED WITH TIMBER SUPPORTS AT 5th POINTS, UNLESS APPROVED BY J.P. CARRARA & SONS, INC.
- MATERIAL SPECIFICATION AND MIX DESIGN SHALL CONFORM TO VERMONT SPEC. P540.02 AND P540.05 RESPECTIVELY.
 DESIGN MIX: J.P.C. BRIDGE MIX #446M5CC
- QUALITY CONTROL PROCEDURES ARE IN ACCORDANCE WITH PCI & VAOT REQUIREMENTS. J.P. CARRARA & SONS, INC. IS A PCI CERTIFIED PLANT.
- CURING METHOD: AS SOON AS THE TOP OF BACKWALL IS FINISHED, A COVER OF POLY WILL BE PLACED OVER THE BACKWALL. NATURAL CURE WITH NO EXTERNAL HEAT APPLIED. UNITS SHALL NOT BE EXPOSED TO TEMPERATURE DIFFERENTIAL GREATER THAN 40°F. UNITS SHALL NOT BE EXPOSED TO A TEMPERATURES LESS THAN 36°F UNTIL DESIGN STRENGTH IS ACHIEVED.
- DUNNAGE IS LOCATED AS NOTED ON DRAWINGS.

Vermont Agency of Transportation
RECEIVED
 ON: May 10, 2016
 and Checked for
CONFORMANCE
 BY: Rob Young DATE: 05/16/2016

Approved	<input checked="" type="checkbox"/> Approved As Noted
Rejected	<input type="checkbox"/>

This review is only for general conformance with the design concept and the information given in the Construction Documents. Corrections or comments made on the shop drawings during the review do not relieve the Contractor from compliance with the requirements of the Plans and Specifications. Review of a specific item shall not include review of an assembly of which an item is a component. The Contractor is responsible for dimensions to be confirmed and corrected at the job site; information that pertains solely to the fabrication process or to the means, methods, techniques, sequences and procedures of construction; coordination of the Work with that of other trades and performing all Work in a safe and satisfactory manner.

Date: 5/13/2016
 By: D. Kull

5-10-16 REVISED AS NOTED

APPROVAL STAMP:	J.P. CARRARA & SONS INC. Precast & Prestress Manufacturer 2864 OASE STR., MIDDLEBURY, VERMONT 05753 Phone: (802)388-6361 Fax: (802)388-9010	A.L. ST. ONGE CONTRACTOR, INC. CONTRACTOR MONTGOMERY, VERMONT
	STATE OF VERMONT AGENCY OF TRANSPORTATION COUNTY OF WINDSOR	
	TOWN OF WAITSFIELD VT ROUTE 100 (MINOR ARTERIAL) BRIDGE NO.: 177 PROJECT NO.: BRP 013-4(39)	
	DATE: JAN. 12, 2016 SCALE: NOTED CHKD: - DFTM: B.L. JOB NO: 23480-016 DWG. NO: F4	
ABUTMENT #2 LAYOUTS ABUTMENT STEMS, BACKWALLS, & WINGWALLS		