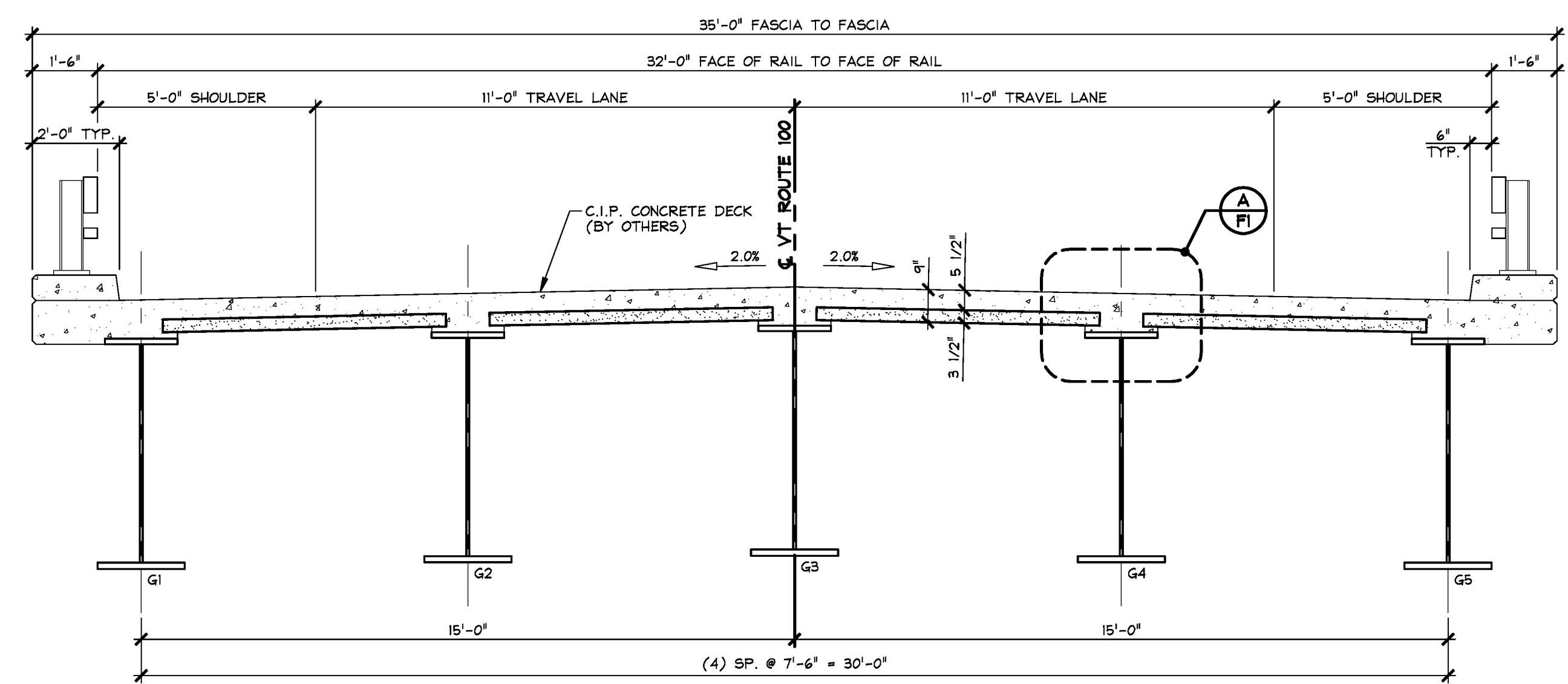
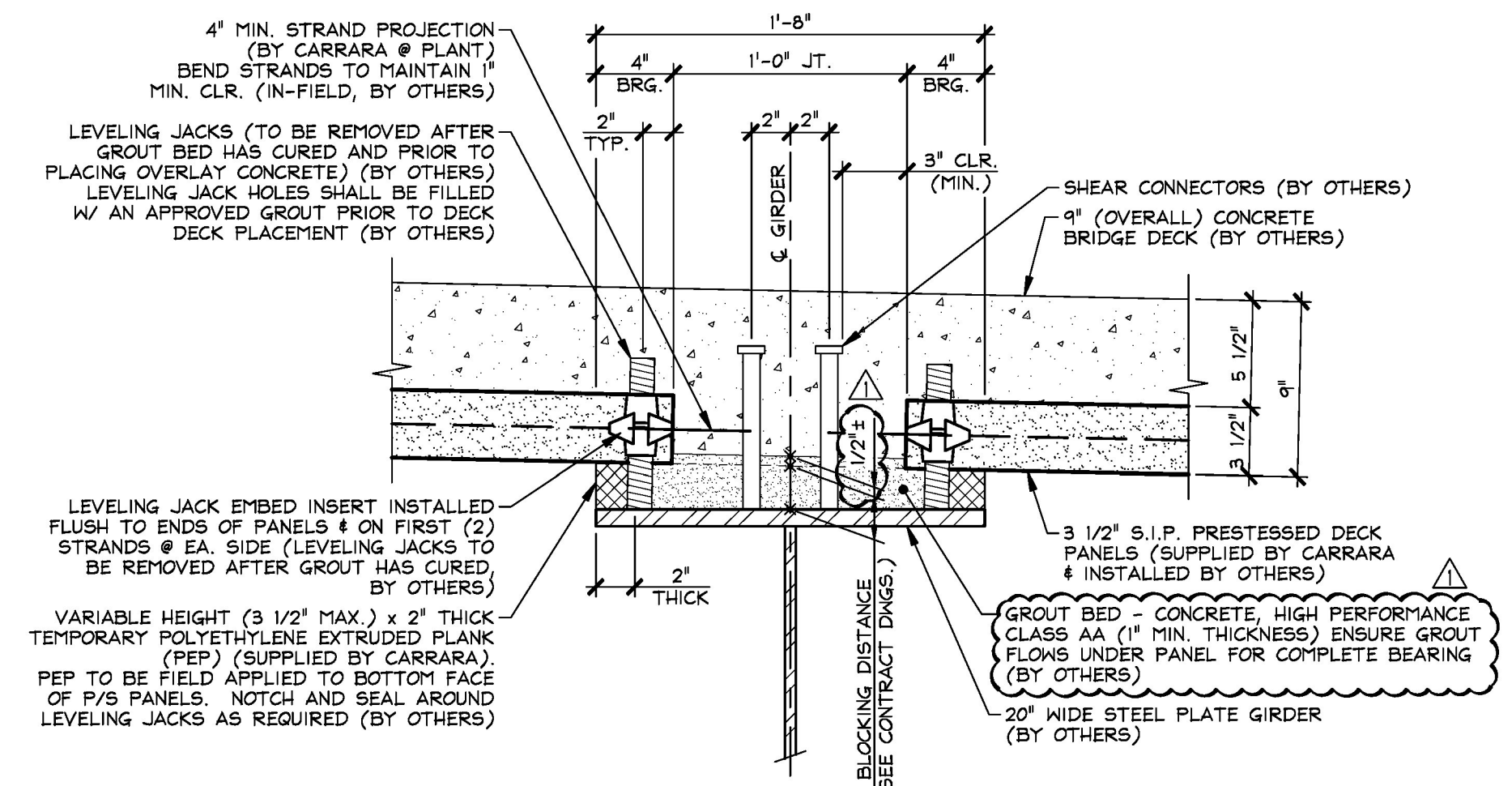


1 PRESTRESSED STAY-IN-PLACE FORM PANEL LAYOUT
1/8" = 1'-0"



2 TRANSVERSE SECTION
3/8" = 1'-0"



A SECTION
1 1/2" = 1'-0"

- GENERAL NOTES**
- MIN. CONCRETE STRENGTH AT 28 DAYS SHALL BE 5,000 PSI.
 - MIN. CONCRETE STRENGTH AT STRESS TRANSFER SHALL BE 4,000 PSI.
 - REINFORCING STEEL SHALL BE GR-60, ASTM A-615 (AASHTO M31), AND SHALL BE LEVEL II (DUAL COATED) AS NOTED ON SHOP TICKET.
 - PRESTRESSING STRANDS SHALL CONFORM TO ASTM A-416 (AASHTO M208M), AND SHALL CONSIST OF 3/8" x 270 KSI 7 WIRE LOW RELAXATION STRANDS.
 - PRESTRESSING STRANDS SHALL EACH BE PULLED TO HAVE A NET TENSION OF 17.2 K (U.N.O.) AFTER ACCOUNTING FOR CHUCK SLIPPAGE TENSION SHALL BE VERIFIED BY MEASURING STRAND ELONGATION. (SEE EXAMPLE ELONGATION CALCULATION AND TENSIONING PROCEDURE, SHEET 'P1').
 - ENDS OF PRESTRESSING STRANDS SHALL PROJECT 4" MIN. FROM EACH END OF PANEL.
 - THE TOPS OF THE PANELS SHALL RECEIVE A RAKE FINISH ROUGHENED TO 1/4" AMPLITUDE (U.N.O.) (DIRECTION PARALLEL TO STRANDS).
 - PANELS SHALL BE HANDLED AND ERECTED USING THE LIFTING INSERTS ONLY. THE MINIMUM SLING ANGLE FROM THE HORIZONTAL SHALL BE 60°. PANELS SHALL BE STORED AND TRANSPORTED WITH TIMBER SUPPORTS BENEATH LIFTERS, UNLESS APPROVED BY J.P. CARRARA & SONS, INC.
 - MATERIAL SPECIFICATION AND MIX DESIGN SHALL CONFORM TO VERMONT SPEC. PS10.02 AND PS10.05 RESPECTIVELY.
DESIGN MIX: J.P.C. BRIDGE MIX #425H (NO DCI)
 - QUALITY CONTROL PROCEDURES ARE IN ACCORDANCE WITH PCI REQUIREMENTS, CONTRACT DOCUMENTS & SPECIFICATIONS. J.P. CARRARA & SONS, INC. IS A PCI CERTIFIED PLANT.
 - CURING METHOD: MOISTURE & HEAT RETENTION. AS SOON AS THE TOP OF THE PANELS ARE FINISHED, A COVER OF POLY AND A LAYER OF RIGID INSULATION WILL BE PLACED OVER THE PANELS IN A MANNER THAT WILL NOT DISTURB THE RAKE FINISH. THE AMBIENT TEMPERATURE WITHIN THE ENCLOSURE SHALL NOT DROP BELOW 70°F. THE TEMPERATURE SHALL BE RECORDED BY AUTOMATIC SENSOR INSTRUMENT ON GRAPH CHART AND WILL CONTINUE UNTIL RELEASE STRENGTH IS ACHIEVED. THE CHART SHALL BE MARKED AND PROVIDED TO THE QA INSPECTOR. THE UNITS SHALL NOT BE EXPOSED TO A TEMPERATURE DIFFERENTIAL BETWEEN THE SURFACE OF THE HARDENED CONCRETE AND THE AMBIENT STORAGE ENVIRONMENT OF GREATER THAN 40°F AT ANY TIME. UNITS SHALL NOT BE EXPOSED TO AMBIENT TEMPERATURES LESS THAN 36°F UNTIL THE DESIGN STRENGTH IS ACHIEVED.
 - THE DRILLING OF HOLES OR USE OF POWER ACTUATED TOOLS ON PANELS SHALL NOT BE PERMITTED.
 - THE PANELS SHALL BE ORIENTED AND ERECTED WITH THE MARK-END AS SHOWN ON PLANS.
 - THE GENERAL CONTRACTOR IS RESPONSIBLE FOR FORMING THE END OF THE DECK SLAB PRIOR TO CASTING DECK.

Reviewed for Conformance
 Rejected

This review is only for general conformance with the design concept and the information given in the Construction Documents. Corrections or comments made on the working drawings during the review do not relieve the Contractor from compliance with the requirements of the Plans and Specifications. Review of a specific item shall not include review of an assembly of which an item is a component. The Contractor is responsible for dimensions to be confirmed and corrected at the job site; information that pertains solely to the fabrication process or to the means, methods, techniques, sequences and procedures of construction; coordination of the Work with that of other trades and performing all Work in a safe and satisfactory manner.

McFarland Johnson, Inc. Date: 3/8/16
53 Regional Drive
Concord, NH 03301
(603) 225-2978
By: D. Kull

Vermont Agency of Transportation
RECEIVED
ON: February 25, 2016
and Checked for
CONFORMANCE
BY: Rob Young DATE: 03/08/2016

T.Y. LIN INTERNATIONAL
THE STAMPED DOCUMENTS ARE HEREBY:

APPROVED
 APPROVED AS NOTED
 REVISE AND RESUBMIT

SEE TRANSMITTAL FOR ADDITIONAL INFORMATION AS APPLICABLE.

THIS REVIEW IS FOR GENERAL CONFORMANCE WITH DESIGN CONCEPT ONLY. ANY DEVIATION FROM THE PLANS OR SPECIFICATIONS NOT CLEARLY NOTED BY THE CONTRACTOR HAS NOT BEEN REVIEWED. REVIEW BY THE ENGINEER SHALL NOT RELIEVE THE CONTRACTOR OF THE CONTRACTUAL RESPONSIBILITY FOR ANY ERRORS OR DEVIATION FROM THE CONTRACT REQUIREMENTS.

JOSH OLUND 02/29/2016
REVIEWER DATE

2-25-16 REVISED PER T.Y. LIN COMMENTS

| | | |
|--|---|---|
| APPROVAL STAMP: | J.P. CARRARA & SONS INC. Precast & Prestress Manufacturer 284 CASE STR., MIDDLEBURY, VERMONT 05753 Phone: (802)388-6361 Fax: (802)388-9810 | A.L. ST. ONGE CONTRACTOR, INC. CONTRACTOR MORRISVILLE, VERMONT |
| STATE OF VERMONT AGENCY OF TRANSPORTATION COUNTY OF WINDSOR | | DATE: JAN. 12, 2016 |
| TOWN OF WAITSFIELD VT ROUTE 100 (MINOR ARTERIAL) BRIDGE NO.: 177 PROJECT NO.: BF 013-4(39) | | SCALE: NOTED |
| PRESTRESSED STAY-IN-PLACE FORM PANEL LAYOUT & DETAILS | | CHKD: A.S. DFTM: B.L. JOB NO: 23480-016 |
| | | DWG. NO: F1 |