

REINFORCED eARTH®

SUSTAINABLE TECHNOLOGY

12001 Sunrise Valley Drive, Suite 400, Reston, VA 20191 (703) 547-8797

GENERAL NOTES

MATERIALS NOTES

1. REINFORCING STRIPS SHALL BE RIBBED 50mm WIDE AND 4mm THICK, AND SHALL CONFORM TO THE PHYSICAL AND MECHANICAL PROPERTIES OF ASTM A-572 GRADE 65. GALVANIZATION SHALL BE IN ACCORDANCE WITH ASTM A-123, A-153, OR AASHTO M111 (2oz/ft²).
2. BOLT SETS SHALL BE ASTM A449, GALVANIZED AS PER ASTM A-153.
3. TIE STRIPS SHALL BE ASTM A1011 (FORMERLY A-570) GRADE 50, GALVANIZED AS PER ASTM A-123 OR A-153.

REINFORCING STRIP INSTALLATION

4. BACKFILL MATERIAL SHALL BE COMPACTED IN ACCORDANCE WITH THE SPECIFICATIONS TO A LEVEL OF 2" (±) ABOVE THE TIE STRIPS EMBEDDED IN THE ABUTMENT. INSTALLATION OF REINFORCING STRIPS SHALL BE PERMITTED ONLY AFTER PLACEMENT AND COMPACTION OF THE BACKFILL MATERIAL HAS REACHED THE REQUIRED LEVEL.
5. COMPACTION AND OPERATION EQUIPMENT SHALL BE KEPT A MINIMUM DISTANCE OF 3'-0" FROM THE BACK FACE OF THE ABUTMENT COMPACTION WITHIN 3'-0" OF THE ABUTMENT SHALL BE ACHIEVED WITH AT LEAST THREE (3) PASSES OF A LIGHTWEIGHT MECHANICAL TAMPER, ROLLER OR VIBRATORY SYSTEM.
6. ALL DETAILING AND CHECKING OF REINFORCING STEEL FOR ANY PRECAST OR C.I.P. CONCRETE IS THE RESPONSIBILITY OF THE CONTRACTOR.
7. FOR OTHER INFORMATION PERTAINING TO ABUTMENT CONSTRUCTION PLEASE REFER TO THE CONTRACT DRAWINGS.
8. THE CONTRACTOR IS RESPONSIBLE FOR GRADUALLY DEFLECTING REINFORCING STRIPS DOWNWARD AND/OR SKEWING STRIPS TO AVOID CONFLICTS WITH WING WALL 3.
9. THE CONTRACTOR IS RESPONSIBLE FOR CONTROLLING STORM WATER DRAINAGE IN THE VICINITY OF THE ABUTMENT DURING CONSTRUCTION. STORM WATER RUNOFF IS TO BE COLLECTED AND DISCHARGED AWAY FROM THE ABUTMENT AND REINFORCED BACKFILL.

10. NOMINAL STRIP LENGTHS

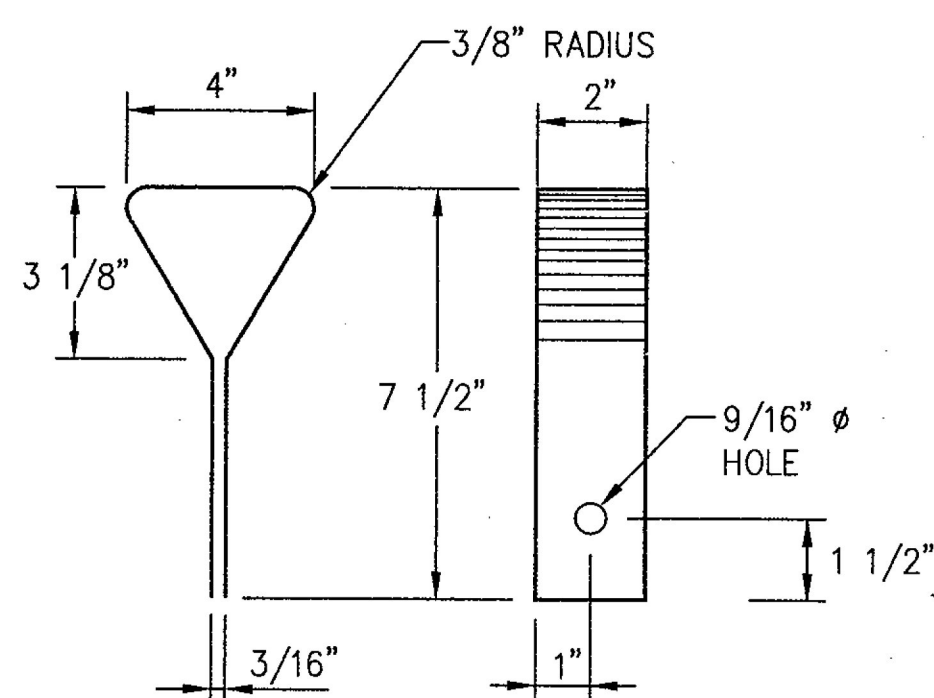
THE REINFORCING STRIP LENGTHS SHOWN ON THE PLANS, MEASURED FROM BACK FACE OF ABUTMENT, ARE THE NOMINAL LENGTHS REQUIRED BY THE CONTRACT PLANS. THE ACTUAL FABRICATED STRIP LENGTHS ARE OFTEN LONGER (UP TO 6") DUE TO MANUFACTURING TOLERANCES.

11. NOTE TO CONTRACTOR

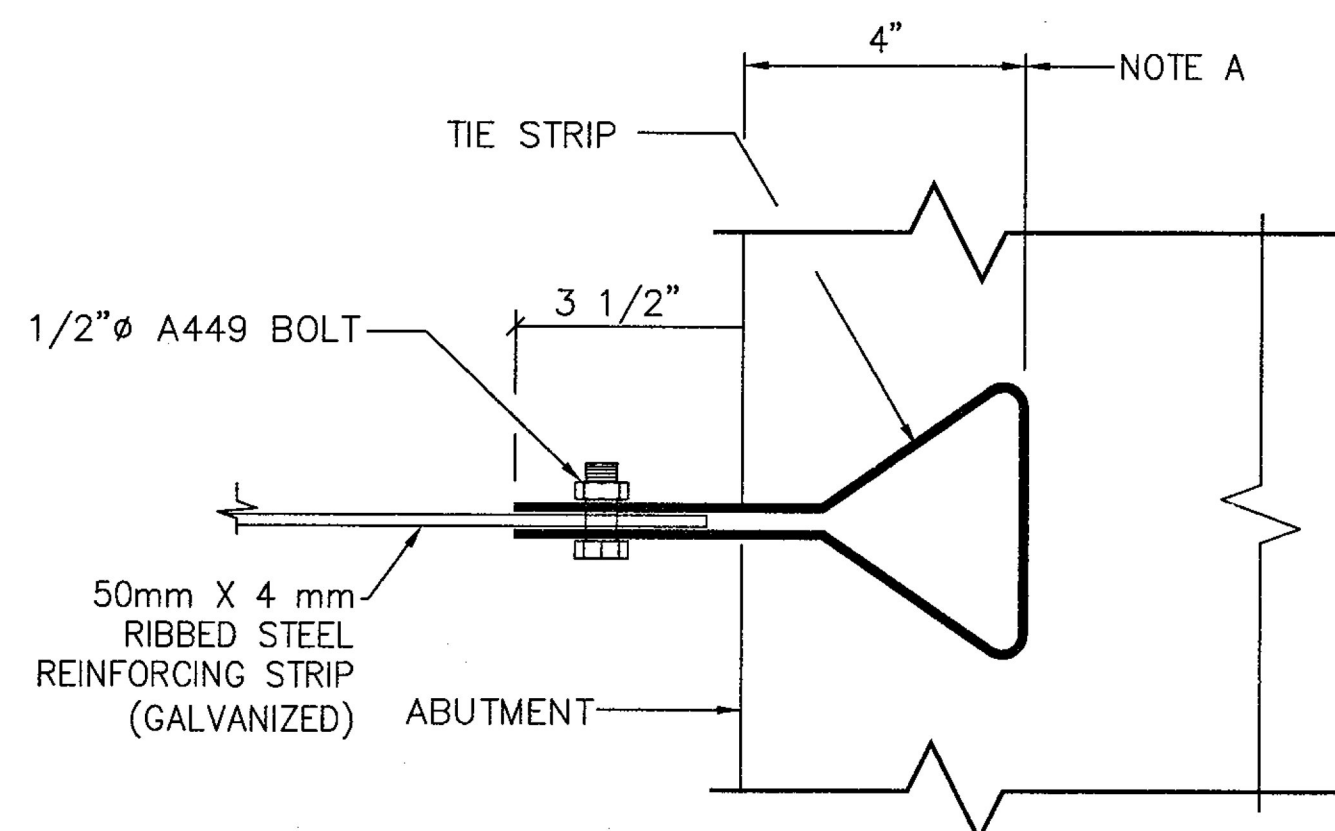
ONLY THE FOLLOWING MATERIALS ARE SUPPLIED BY THE REINFORCED EARTH COMPANY:

- REINFORCING STRIPS
- BOLT SETS (FOR ATTACHING REINFORCING STRIPS TO TIE STRIPS)
- TIE STRIPS

ANY OTHER MATERIALS CALLED FOR IN THE CONTRACT PLANS OR SPECIFICATIONS ARE TO BE SUPPLIED BY THE CONTRACTOR.



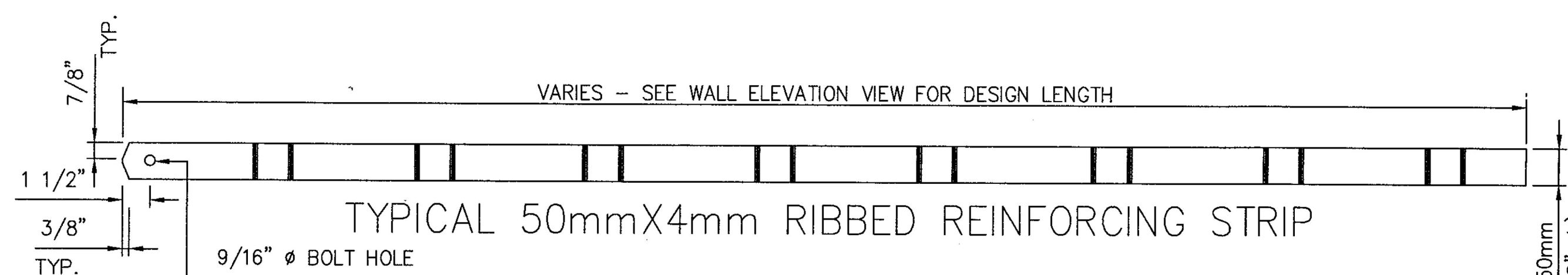
TIE STRIP DETAIL



CONNECTION DETAIL

NO SCALE

NOTE A: TIE STRIPS SHALL BE EMBEDDED 4" IN PRECAST ABUTMENT BACKWALL. TOLERANCE ON EMBEDMENT IS ±1/4"



INDEX	
DRAWING	TITLE
1	GENERAL NOTES
2	ABUTMENT ELEVATION AND DETAILS

Vermont Agency of Transportation

RECEIVED

ON: **January 19, 2016**

and Checked for
CONFORMANCE

BY: Rob Young DATE: 02/18/2016

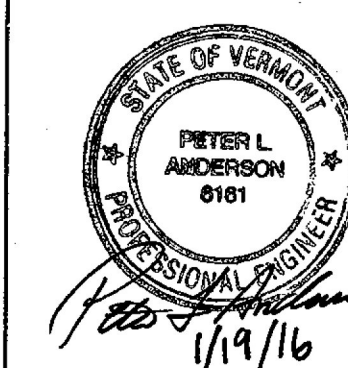
Approved	<input checked="" type="checkbox"/> Approved As Noted
Rejected	<input type="checkbox"/>

This review is only for general conformance with the design concept and the information given in the Construction Documents. Corrections or comments made on the shop drawings during the review do not relieve the Contractor from compliance with the requirements of the Plans and Specifications. Review of a specific item shall not include review of an assembly of which an item is a component. The Contractor is responsible for dimensions to be confirmed and corrected at the job site; information that pertains solely to the fabrication process or to the means, methods, techniques, sequences and procedures of construction; coordination of the Work with that of other trades and performing all Work in a safe and satisfactory manner.

Date: 2/17/2016
By: D. Kull

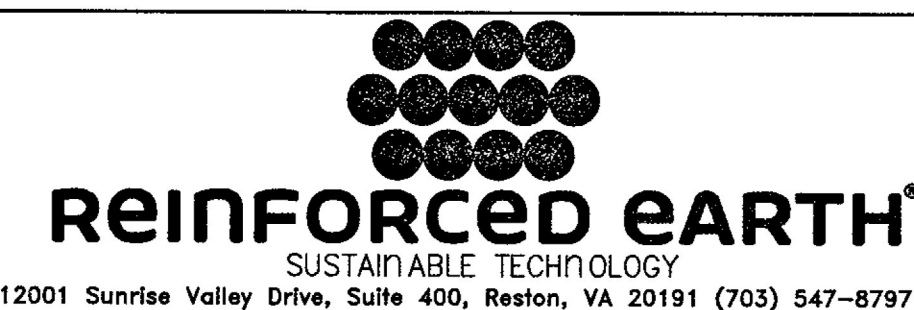
McFarland Johnson

CERTIFIED WITH RESPECT TO PROPERTIES AND DIMENSIONS OF SUPPLIED MATERIALS ONLY



This drawing contains information proprietary to The Reinforced Earth Company, and is being furnished for the use of VTAOT only in connection with this project, and the information contained herein is not to be transmitted to any other organization unless specifically authorized in writing by The Reinforced Earth Company. The Reinforced Earth Company is exclusive licensee in the United States under patents issued to Henri Vidal, and the furnishing of this drawing does not constitute an expressed or implied license under the Vidal patents.

The design contained on these drawings is based on information provided in the contract drawings by the owner. Internal stability and external stability, including foundation (bearing capacity and settlement) and slope (global) stability, is the responsibility of the owner.



"REINFORCED EARTH®" IS THE REGISTERED TRADE NAME OF THE REINFORCED EARTH COMPANY.

DESIGNED BY: CAA	PROJECT NAME WAITSFIELD BRIDGE IMPROVEMENT RT 100 BRIDGE 177	DATE 1/19/16
PROJECT ENGR: CAA	LOCATION TOWN OF WAITSFIELD COUNTY OF WASHINGTON	CONTRACT NO. RE-17708
CHECKED BY: PLA	OWNER VTAOT	DRAWING NO. 1 OF 2
REV. DATE DESCRIPTION	DRAWING COVERS GENERAL NOTES	SCALE AS SHOWN

R-17708