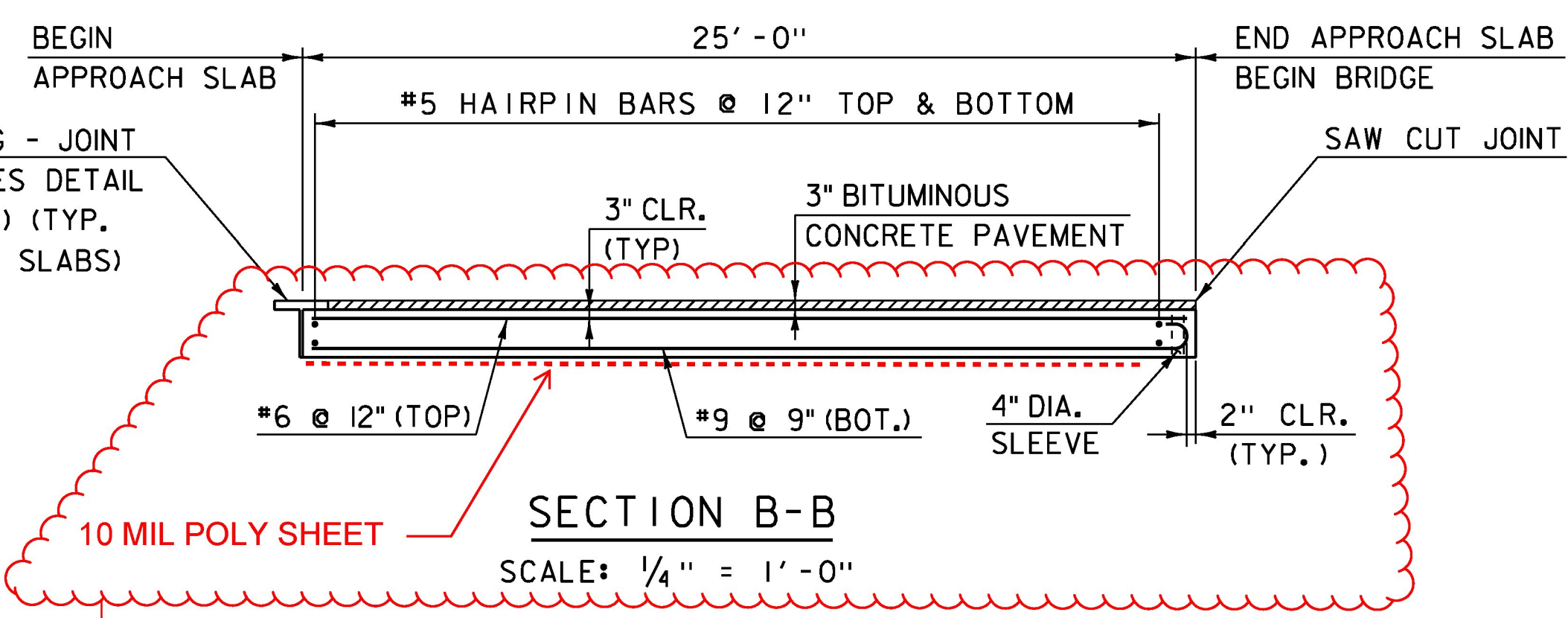
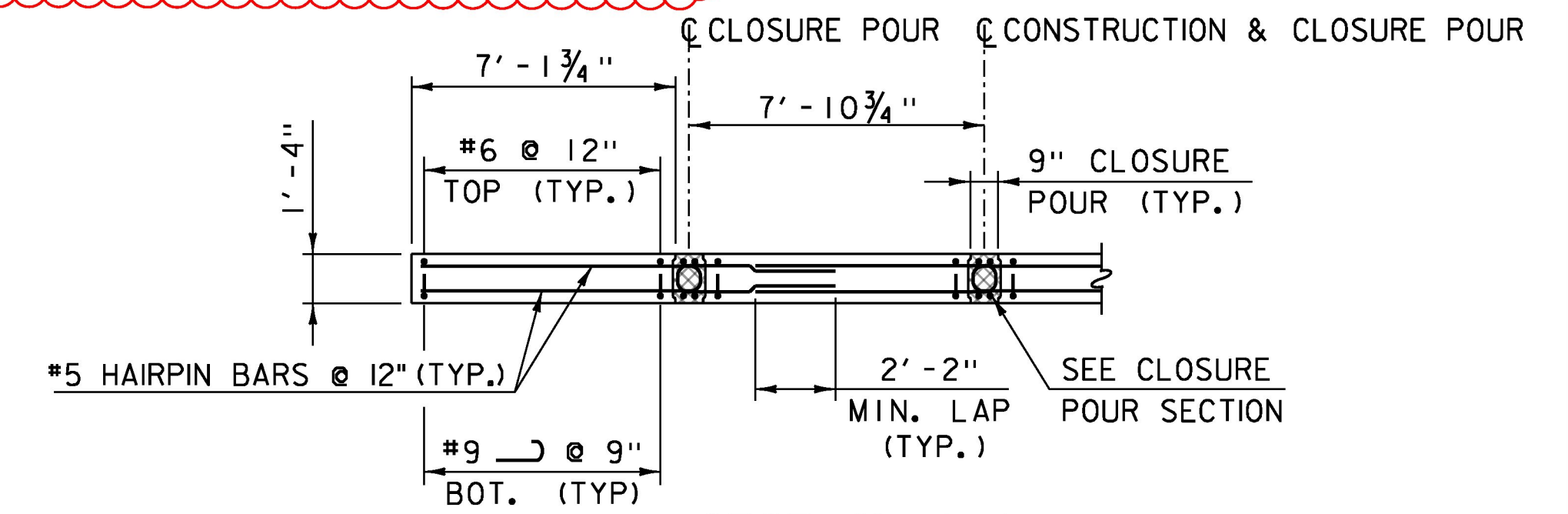


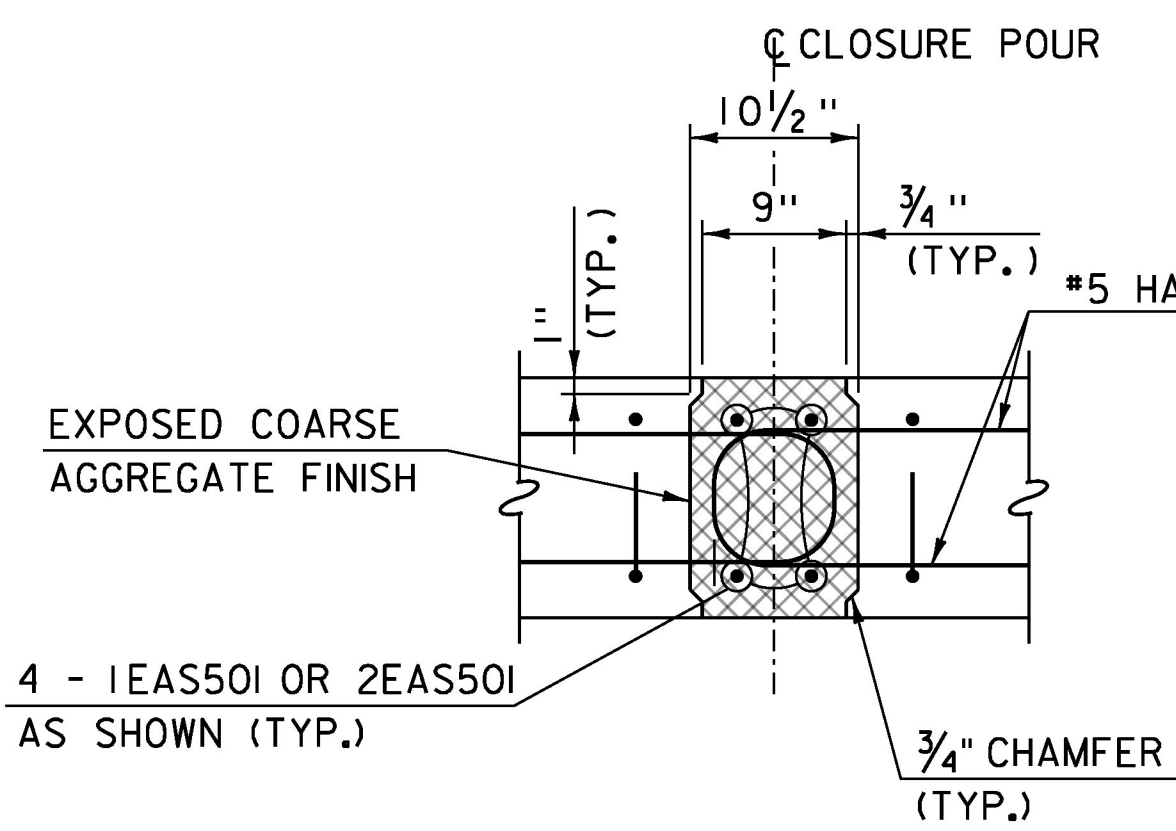
APPROACH SLAB NO. 1 PLAN
 (APPROACH SLAB NO 1 SHOWN, APPROACH SLAB NO 2 SIMILAR)
 SCALE: 1/4" = 1'-0"



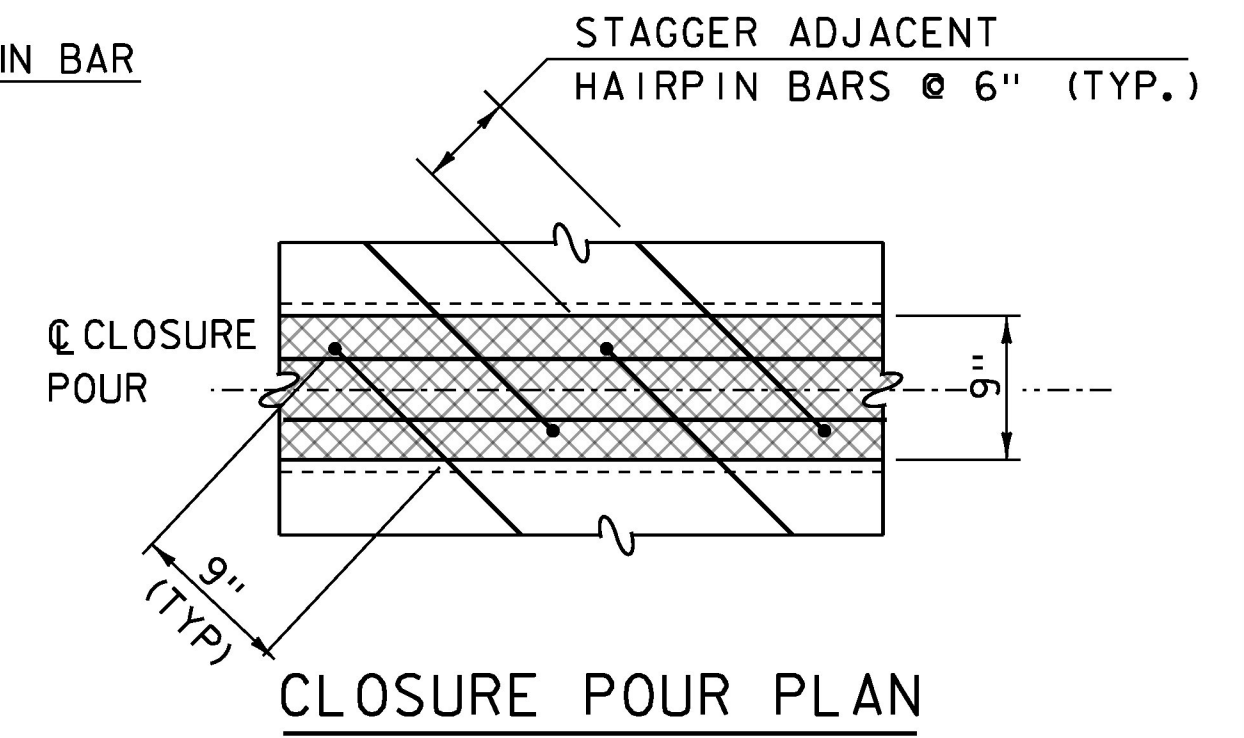
SECTION B-B
 SCALE: 1/4" = 1'-0"



SECTION A-A
 SCALE: 1/4" = 1'-0"



CLOSURE POUR SECTION
 SCALE: 1" = 1'-0"



CLOSURE POUR PLAN
 SCALE: 1" = 1'-0"

LEGEND

SPECIAL PROVISION
 HIGH PERFORMANCE CONCRETE,
 RAPID SET (FPQ)
 (ULTRA HIGH PERFORMANCE CONCRETE) (FPQ)

REV	DATE	DESCRIPTION
VE	02/03/16	MODIFIED CLOSURE POUR CONCRETE TYPE

STATE OF VERMONT
 JOSHUA K. O'LEARY
 NO. 72818
 Structural Part II
 LICENSED PROFESSIONAL ENGINEER
 12-03-16

STAMP INDICATES RESPONSIBILITY FOR REVISIONS TO THIS SHEET MARKED REVISION "VE".

5. CHIMNEYS CONSISTING OF 5 GALLON PLASTIC PAILS SHALL BE PLACED AND SPACED ALONG THE JOINTS TO ADD HYDRAULIC PRESSURE TO PURGE ANY AIR POCKETS THAT MAY FORM WHILE CASTING THE UHPC. THIS SHALL BE IN ACCORDANCE WITH THE MANUFACTURERS RECOMMENDATIONS.

NOTE:

▲ = CUT TO FIT IN FIELD
 3" CLEAR, UNLESS OTHERWISE SPECIFIED ON THE PLANS.
 2'-2" BAR LAP UNLESS OTHERWISE SPECIFIED ON THE PLANS.

McFarland Johnson

- NOTES**
- LIFTING POINTS ARE SHOWN FOR ILLUSTRATIVE PURPOSES ONLY. ACTUAL LIFTING LOCATIONS SHALL BE DETERMINED BY THE FABRICATOR AND INDICATED ON THE FABRICATION DRAWINGS WITH CALCULATIONS.
 - THE TOP SURFACE OF THE PRECAST APPROACH SLAB PANELS SHALL HAVE A BROOM FINISH PARALLEL TO THE CENTERLINE OF CONSTRUCTION.
 - THE CONTRACTOR SHALL BE RESPONSIBLE FOR ESTABLISHING UNIFORM CONTACT BETWEEN THE APPROACH SLAB AND THE SUBBASE MATERIAL TO THE SATISFACTION OF THE ENGINEER. THE FABRICATION DRAWINGS SHALL INDICATE THE MEANS AND METHODS NECESSARY TO INSTALL THE APPROACH SLABS TO THE ELEVATIONS SPECIFIED.
 - SLEEVE LOCATIONS TO BE COORDINATED WITH CONSTRUCTION JOINTS AND DOWELS IN PRECAST BACKWALL.

PROJECT NAME: WAITSFIELD	PLOT DATE: 8/24/2015
PROJECT NUMBER: BRP 013-4(39)	DRAWN BY: S.MERKWAN
FILE NAME: z12b136sub_appr.dgn	CHECKED BY: T.KENDRICK
PROJECT LEADER: R.YOUNG	SHEET 35 OF 69
DESIGNED BY: D.KULL	
APPROACH SLAB DETAILS	

WORKING POINT	APPROACH SLAB NO. 1			APPROACH SLAB NO. 2		
	STATION	OFFSET	ELEVATION	STATION	OFFSET	ELEVATION
A	13+12.05	15.42' LT.	727.83	15+16.47	15.42' LT.	728.84
B	13+19.57	7.90' LT.	728.15	15+23.99	7.90' LT.	728.90
C	13+27.46	CL	728.46	15+31.89	CL	728.94
D	13+35.36	7.90' RT.	728.45	15+39.78	7.90' RT.	728.66
E	13+42.88	15.42' RT.	728.43	15+47.31	15.42' RT.	728.39
F	13+37.05	15.42' LT.	728.33	15+41.47	15.42' LT.	728.48
G	13+44.57	7.90' LT.	728.61	15+48.99	7.90' LT.	728.51
H	13.52.46	CL	728.90	15+56.89	CL	728.52
J	13+60.36	7.90' RT.	728.85	15+64.78	7.90' RT.	728.21
K	13+67.88	15.42' RT.	728.80	15+72.31	15.42' RT.	727.90

ALL ELEVATIONS ARE AT TOP OF APPROACH SLAB