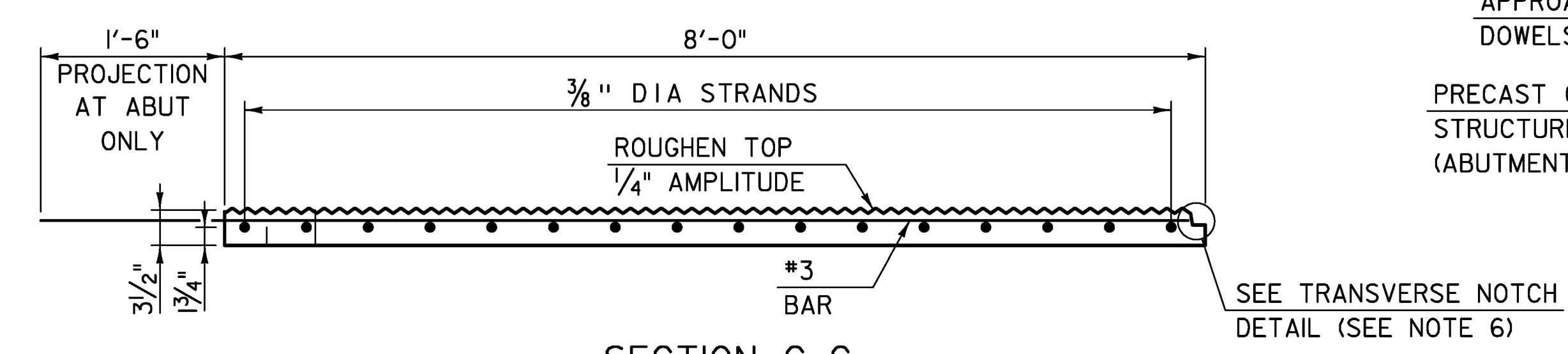
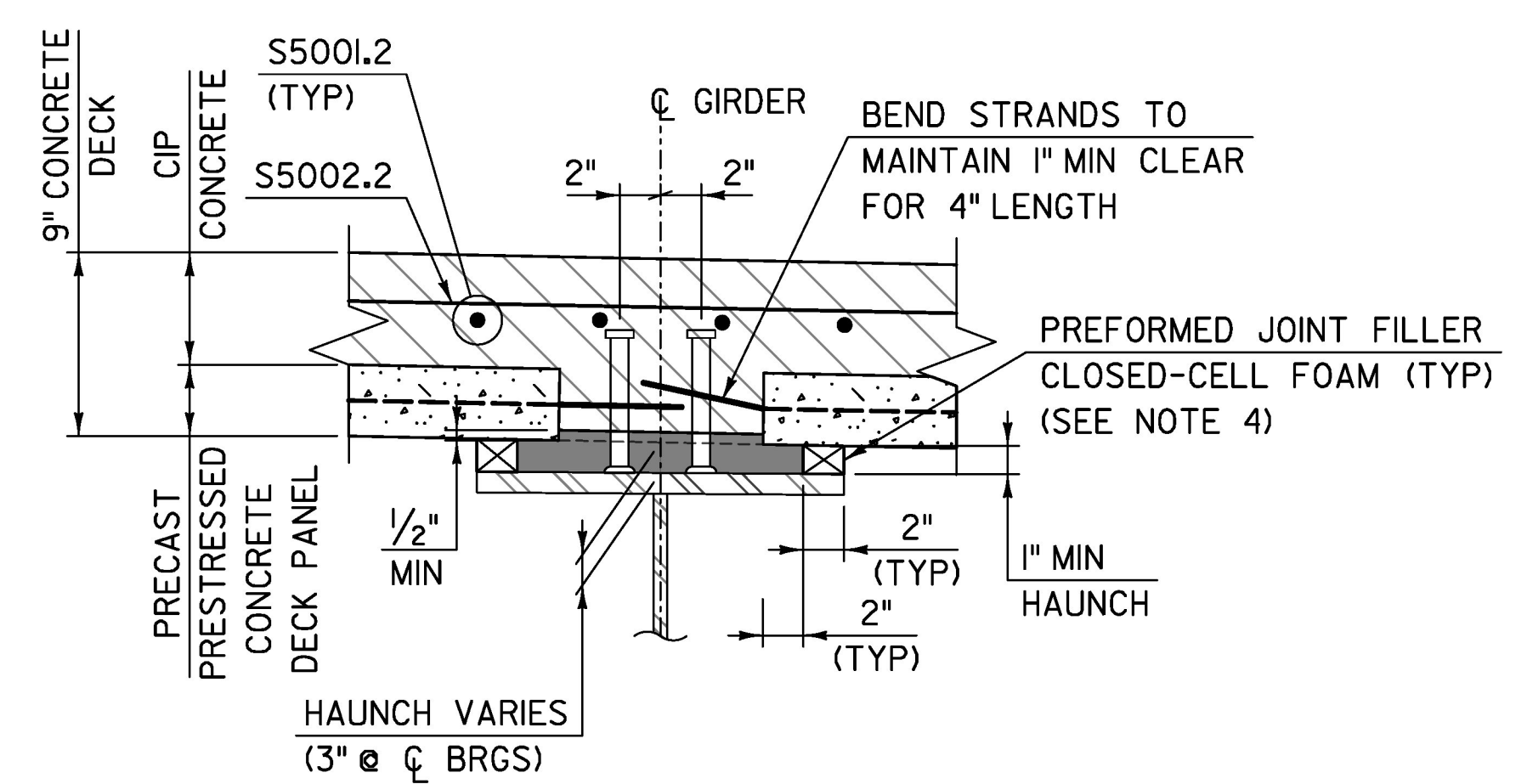


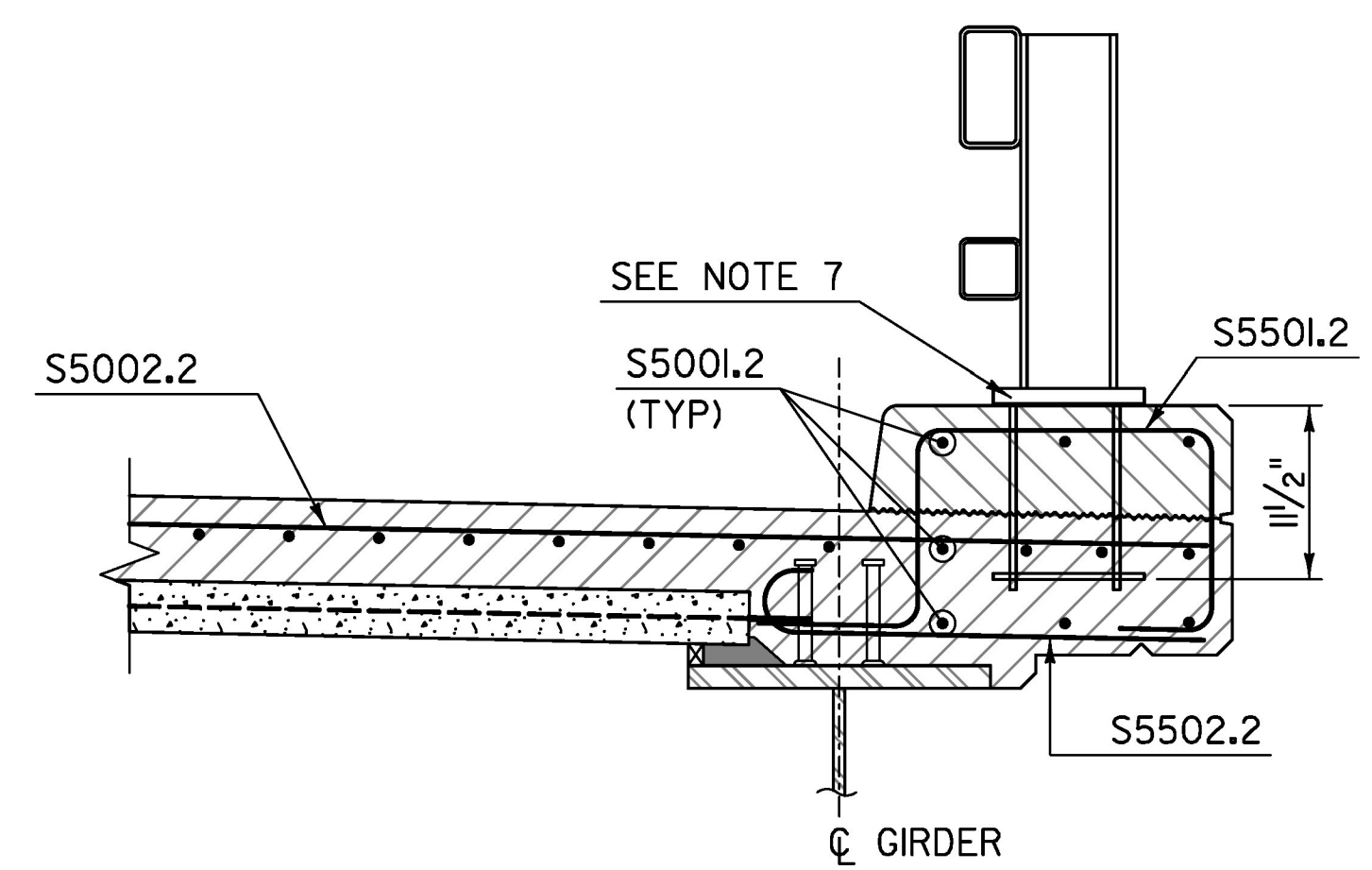
**PRECAST PRESTRESSED CONCRETE DECK PANEL PLAN**  
SCALE: 1" = 1'-0"



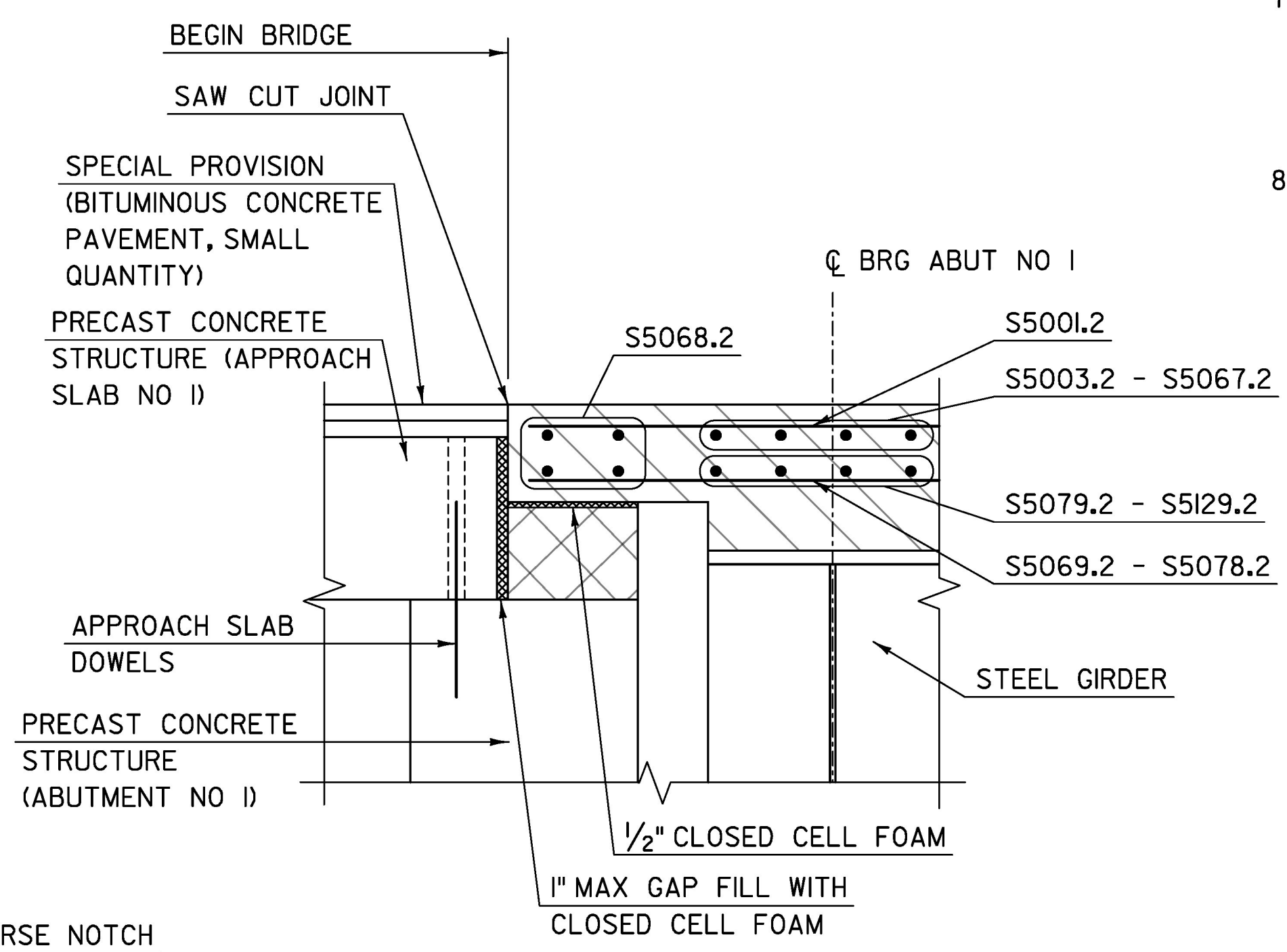
**SECTION C-C**  
SCALE: 1" = 1'-0"



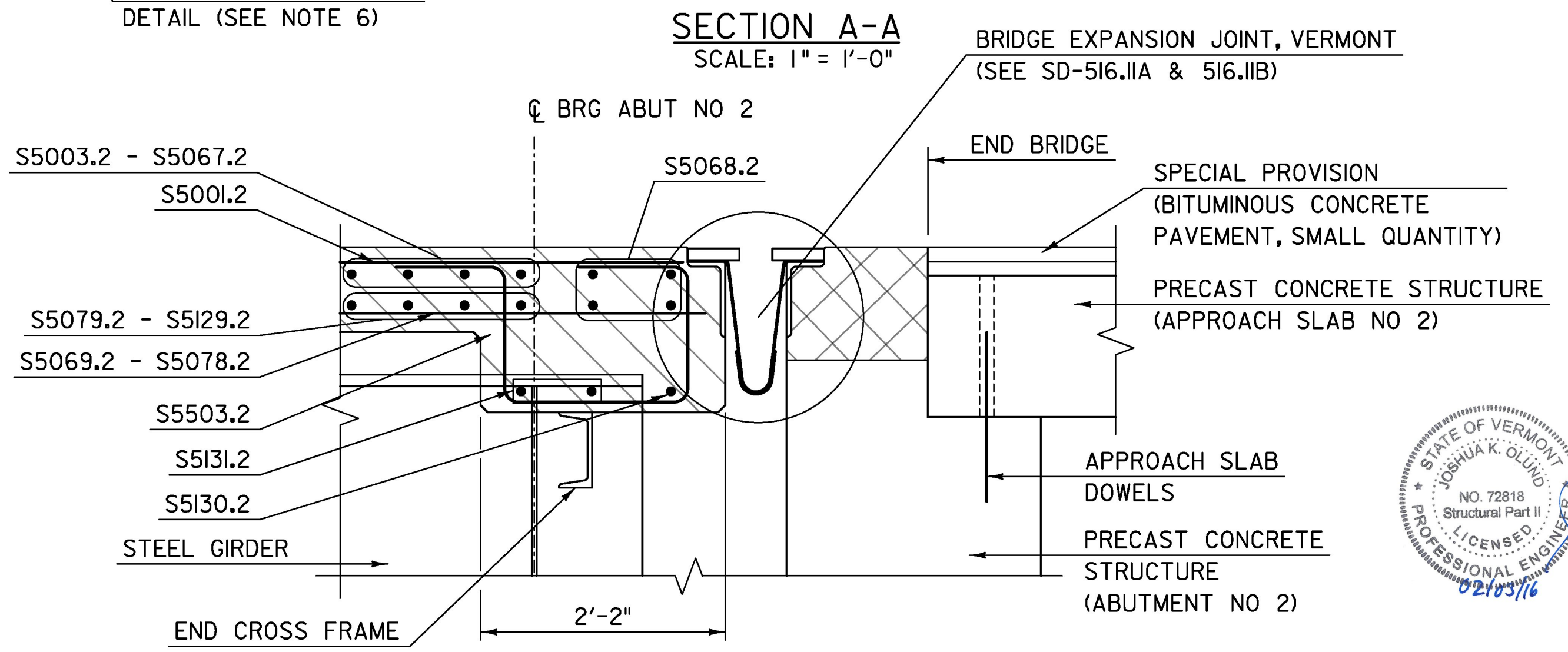
**BLOCKING DETAIL**  
SCALE: 1/2" = 1'-0"



**TYPICAL OVERHANG SECTION**  
SCALE: 1" = 1'-0"



**SECTION A-A**  
SCALE: 1" = 1'-0"



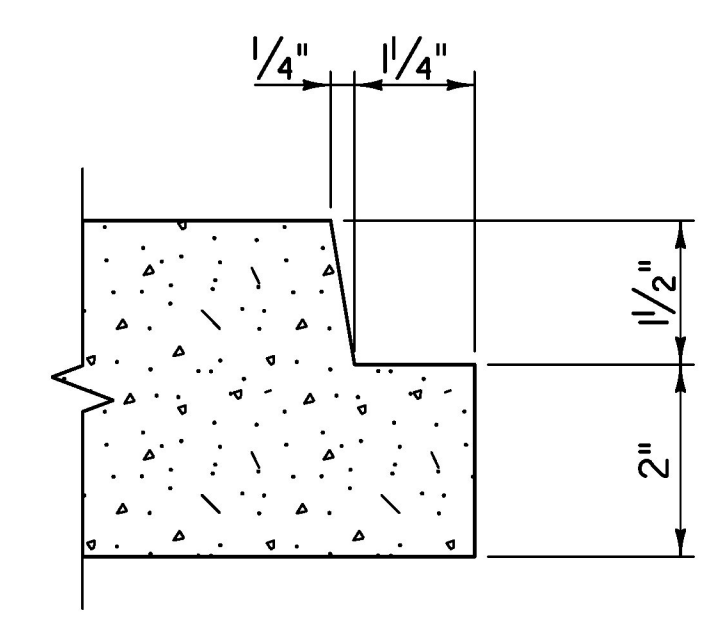
**SECTION B-B**  
SCALE: 1" = 1'-0"  
(VT JOINT HARDWARE NOT SHOWN FOR CLARITY)

**NOTES:**

1. PRECAST PRESTRESSED CONCRETE DECK PANELS SHALL BE FABRICATED IN ACCORDANCE WITH SECTION 510 OF THE STANDARD SPECIFICATIONS.
2. PRESTRESSING STRANDS SHALL BE GRADE 270 SEVEN - WIRE LOW RELAXATION STRANDS CONFORMING TO THE REQUIREMENTS OF AASHTO M203 (ASTM A416). INITIAL TENSION SHALL BE 17.2 KIPS PER STRAND.
3. DURING ERECTION, PRECAST PRESTRESSED CONCRETE DECK PANELS SHALL ALIGN VERTICALLY TO WITHIN 1/4" INCH.
4. PREFORMED JOINT FILLER, CLOSED-CELL FOAM SHALL BE CUT IN THE FIELD TO THE REQUIRED THICKNESS.
5. LIFTING DEVICE SELECTION AND DESIGN SHALL BE THE RESPONSIBILITY OF THE FABRICATOR.
6. OMIT TRANSVERSE NOTCH ON END PANELS AT ABUTMENTS.
7. THE RAIL POST ANCHORAGE DETAIL SHOWN ON STANDARD DRAWING S-360A SHALL BE MODIFIED BY LENGTHENING THE ANCHOR RODS 4 INCHES AND LOWERING THE EMBEDMENT LOCATION OF THE ANCHOR PLATE AS SHOWN IN THE TYPICAL OVERHANG SECTION, THIS SHEET.
8. ALL COSTS ASSOCIATED WITH PROVIDING AND PLACING CLOSED-CELL FOAM BEDDING STRIPS AND HPC CLASS AA FOR GROUT BEDS WILL BE CONSIDERED INCIDENTAL TO ITEM 900.670, "SPECIAL PROVISION (PRECAST PRESTRESSED CONCRETE DECK PANEL)(3/2)".

**LEGEND:**

- CONCRETE, HIGH PERFORMANCE CLASS A
- PRECAST PRESTRESSED CONCRETE DECK PANEL
- CONCRETE, HIGH PERFORMANCE CLASS AA
- SPECIAL PROVISION CONCRETE, HIGH PERFORMANCE RAPID SET



**TRANSVERSE NOTCH DETAIL**  
NOT TO SCALE



<b>TYLIN INTERNATIONAL</b>	PROJECT NAME: WAITSFIELD	PLOT DATE: 2/2/2016
	PROJECT NUMBER: BRF 013-4(39)	DRAWN BY: S. MORGAN
	FILE NAME: z12b136sup2.dgn	CHECKED BY: J. OLUND
	DESIGNED BY: T. POULIN	SHEET 26A OF 69
	SUPERSTRUCTURE DETAILS	