

GPS CONTROL POINTS

HVCTRL #1

IRASVILLE
 NORTH = 608604.820
 EAST = 1553434.080
 ELEV. = 741.000

HVCTRL #2

IRASVILLE AZ MK
 NORTH = 610915.770
 EAST = 1552896.780
 ELEV. = 725.000

TRAVERSE TIES

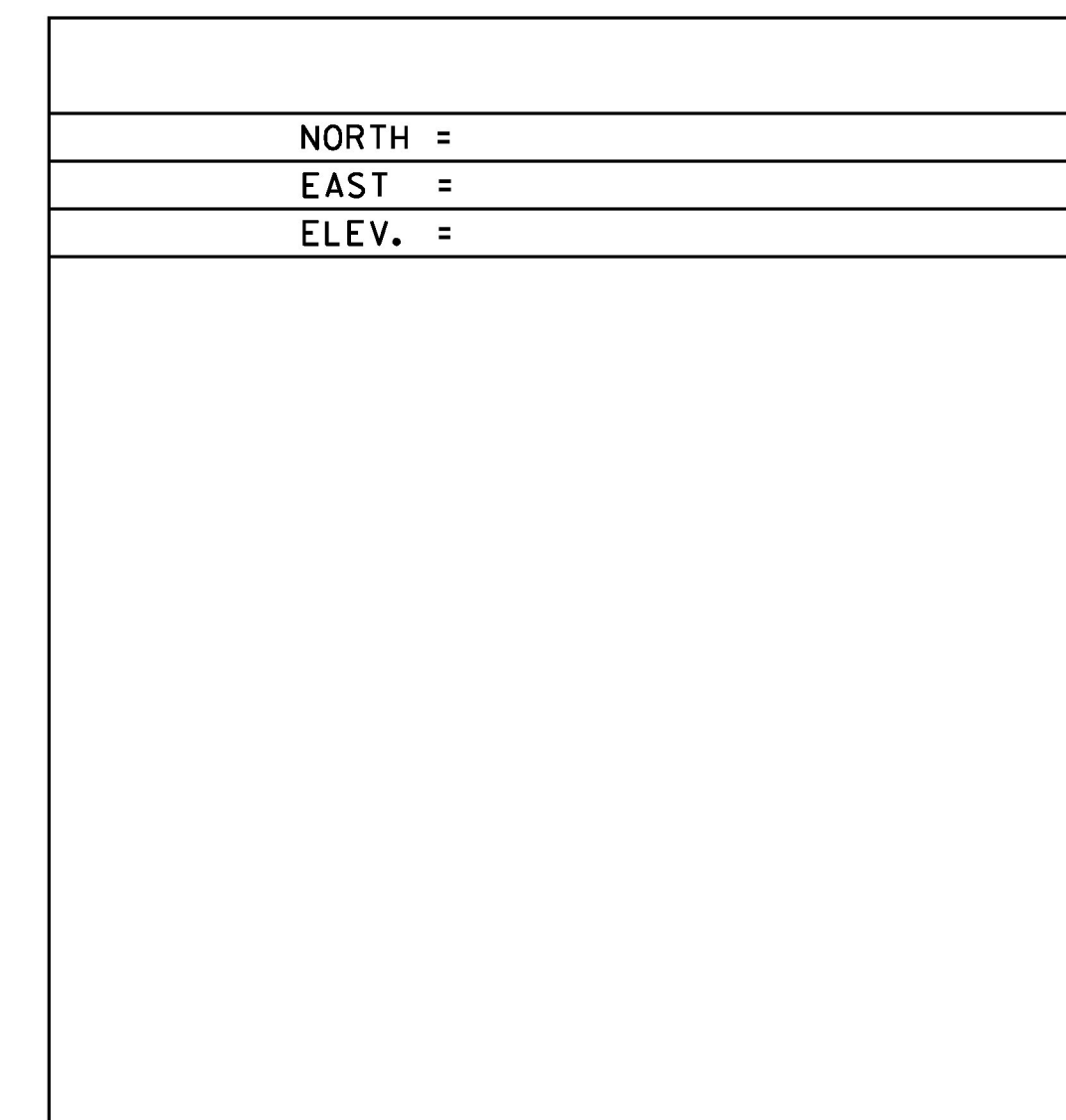
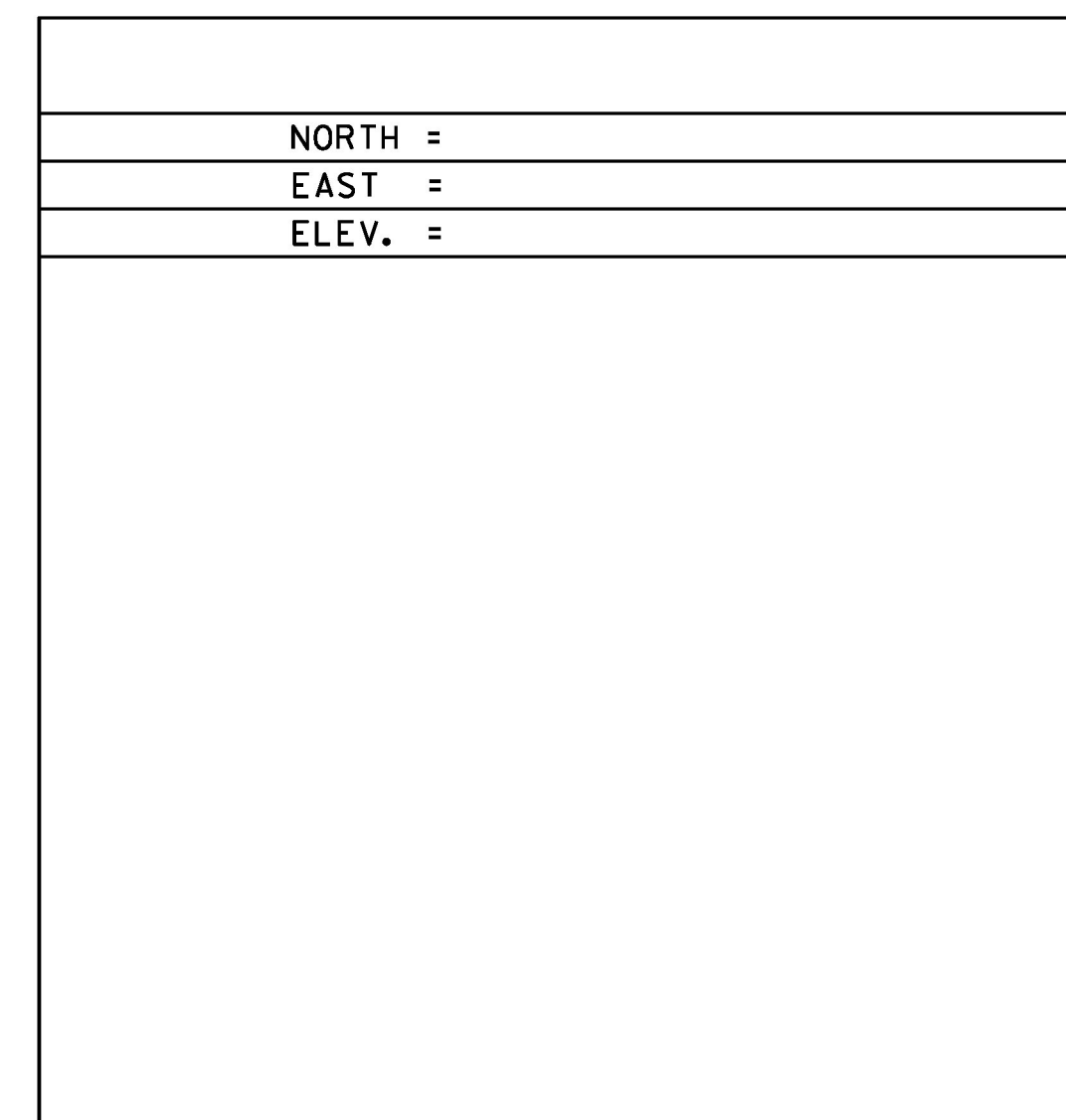
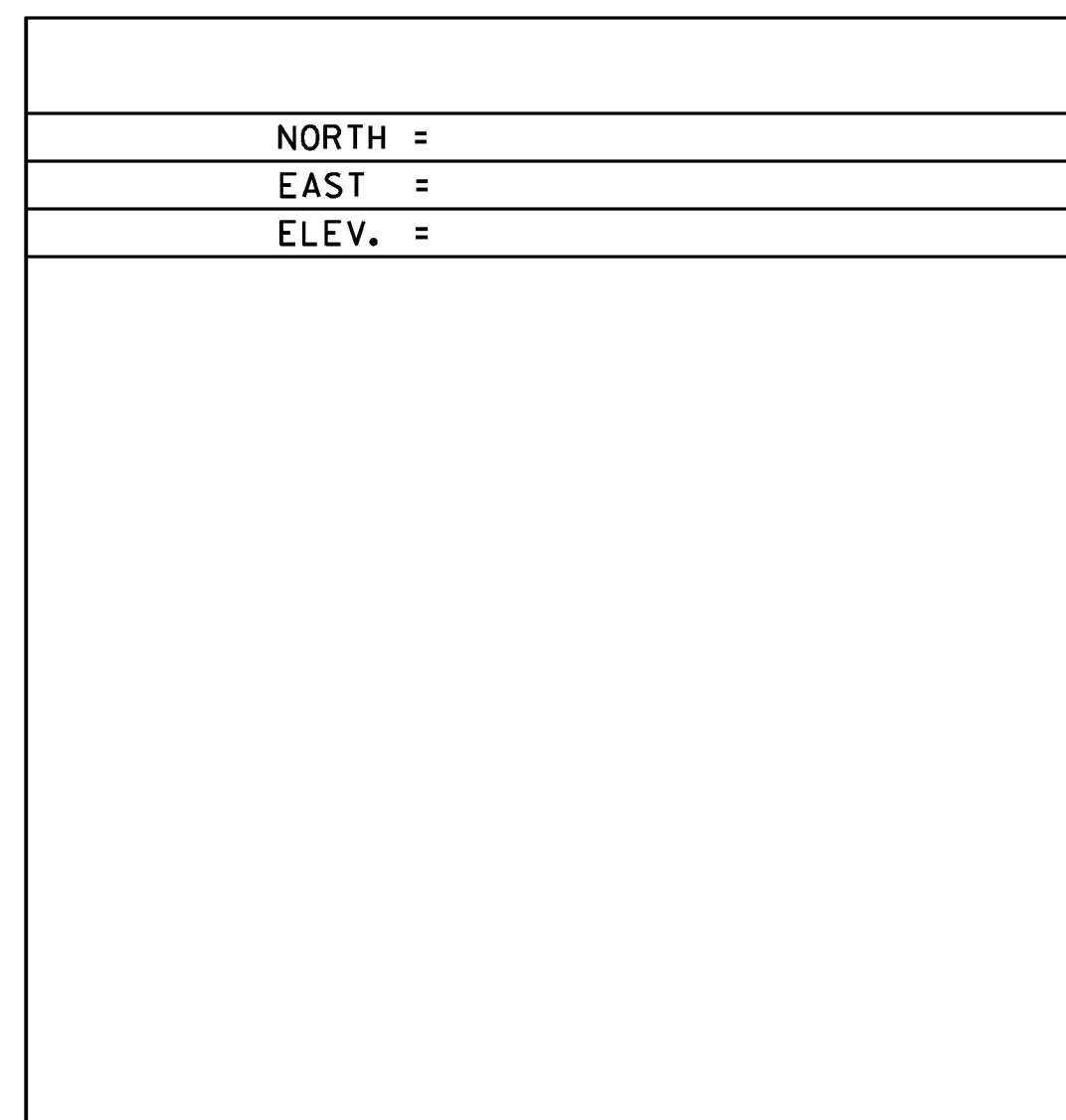
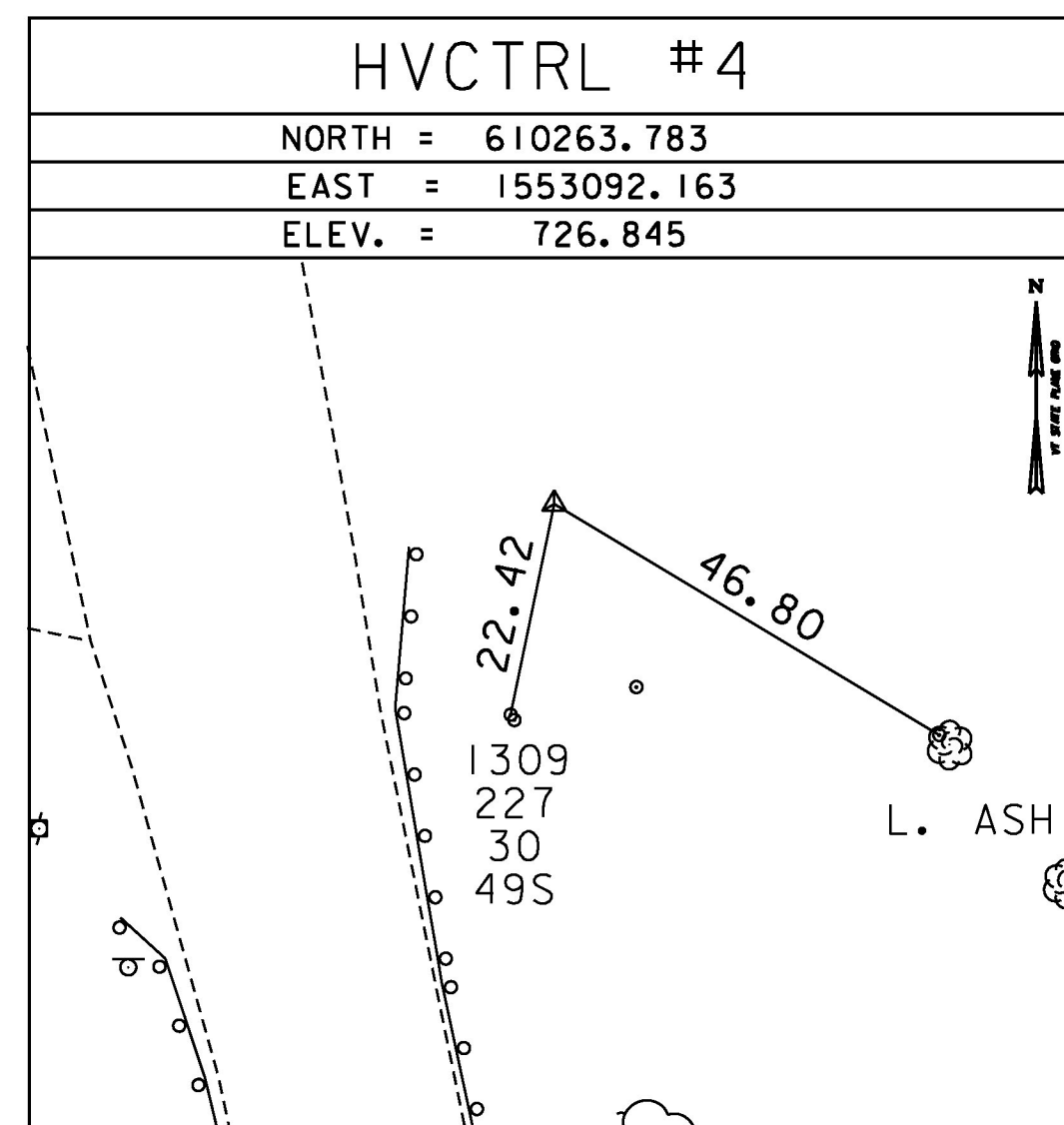
HVCTRL #3

NORTH = 609991.753
 EAST = 1553027.095
 ELEV. = 716.502



HVCTRL #4

NORTH = 610263.783
 EAST = 1553092.163
 ELEV. = 726.845



* MAIN TRAVERSE COMPLETED 5/23/2012 BY G. HITCHCOCK P.C. & H. MCGOWAN

ALIGNMENT COORDINATES

VT ROUTE 100			
	STATION	NORTHING	EASTING
POB	10+00.00	609547.8383	1553216.4086
POE	19+14.37	610439.9009	1553015.6516
MAD RIVER			
POB	50+00.00	609860.0926	1553037.4176
POE	53+00.00	610113.6236	1553197.7985

DATUM
 VERTICAL NAVD 88
 HORIZONTAL NAD 83 (07)
 ADJUSTMENT COMPASS

PROJECT NAME: WAITSFIELD
 PROJECT NUMBER: BRF 013-4(39)
 FILE NAME: z12b136+1e.dgn PLOT DATE: 8/24/2015
 PROJECT LEADER: R. YOUNG DRAWN BY: R. BULLOCK
 DESIGNED BY: VTRANS CHECKED BY: T. KENDRICK
 TIE SHEET SHEET 12 OF 69