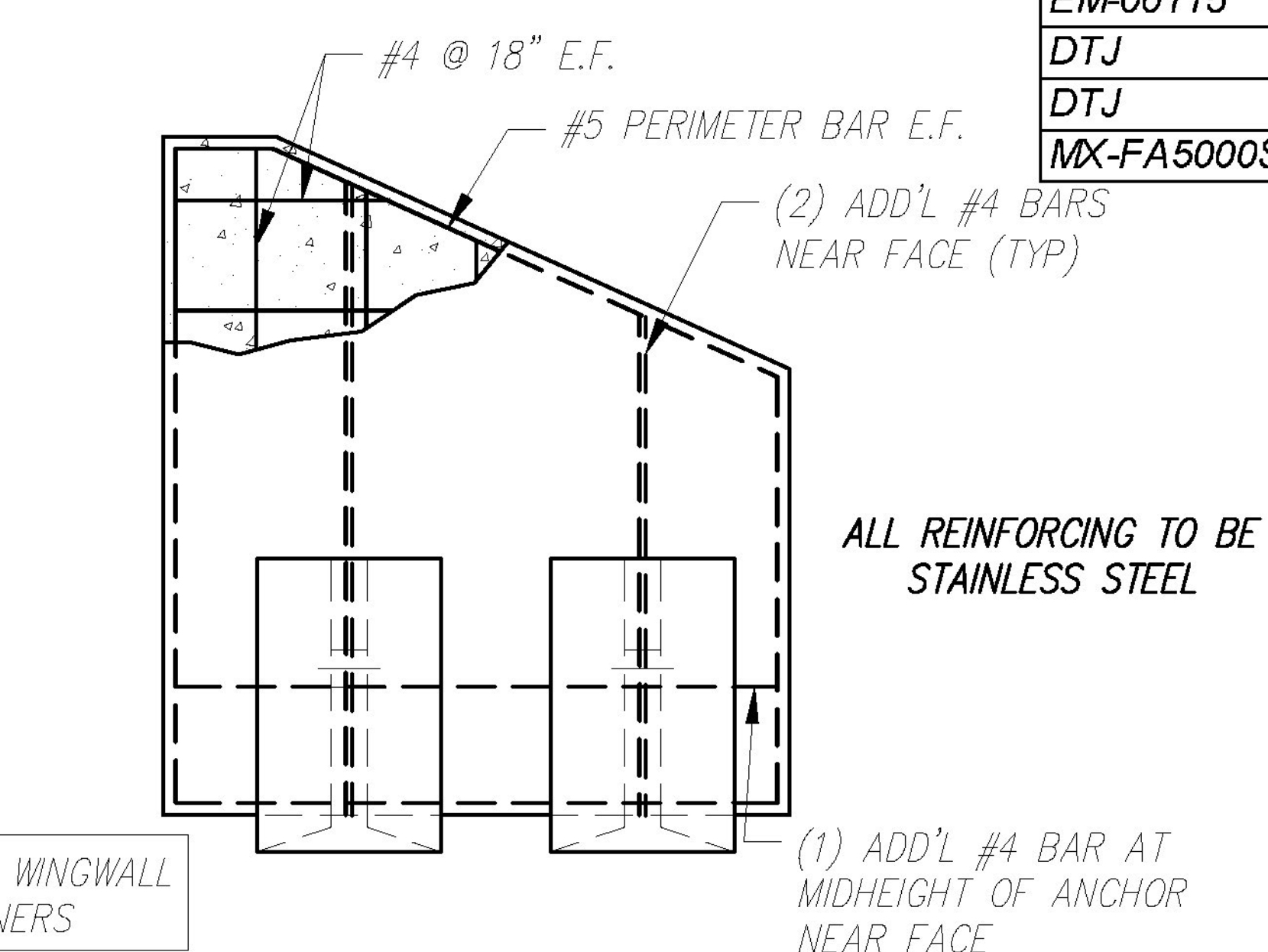


**PLAN VIEW**  
Scale: 1/4" = 1'-0"

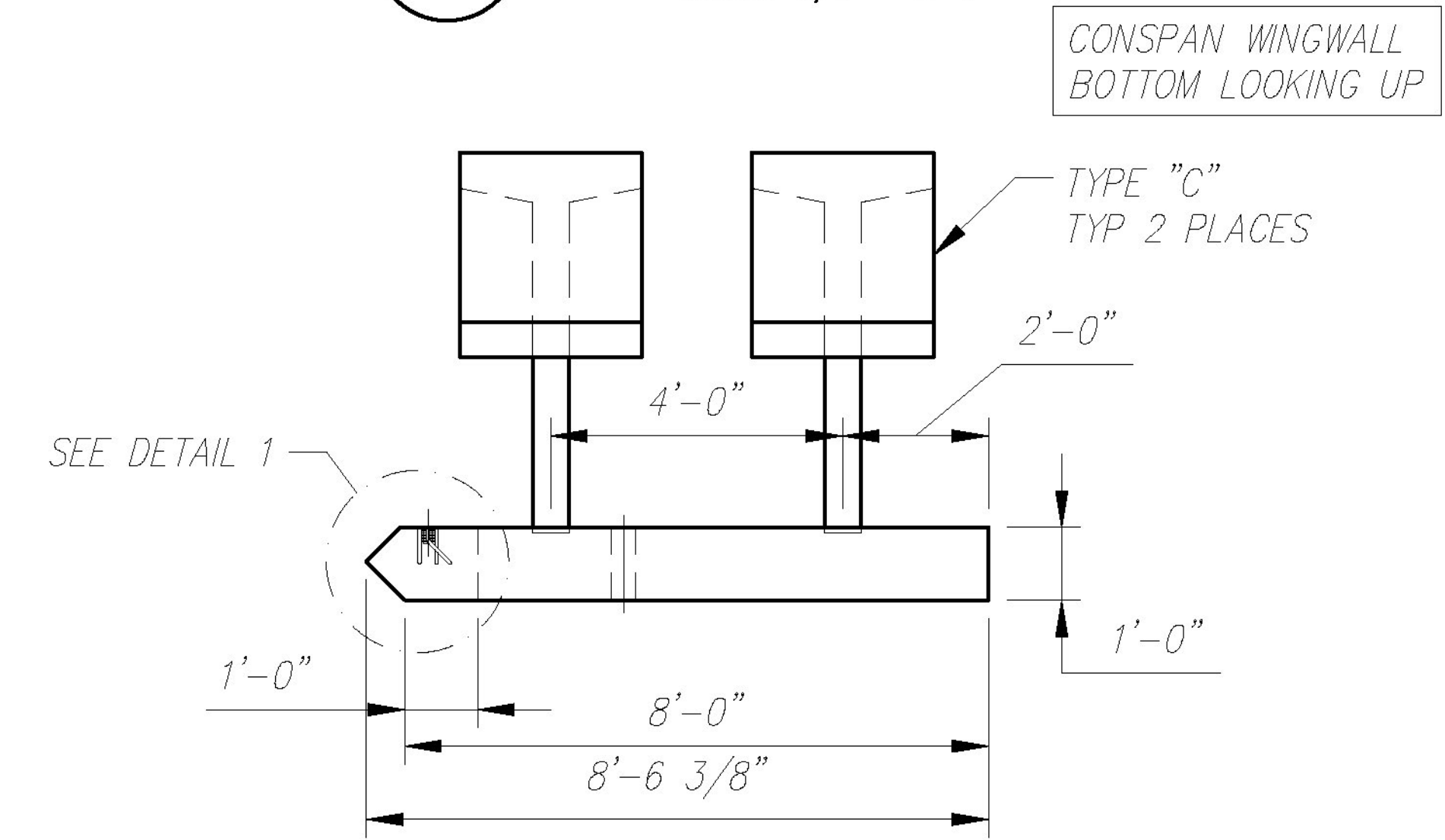


**REINFORCING DETAIL**  
Scale: 1/4" = 1'-0"

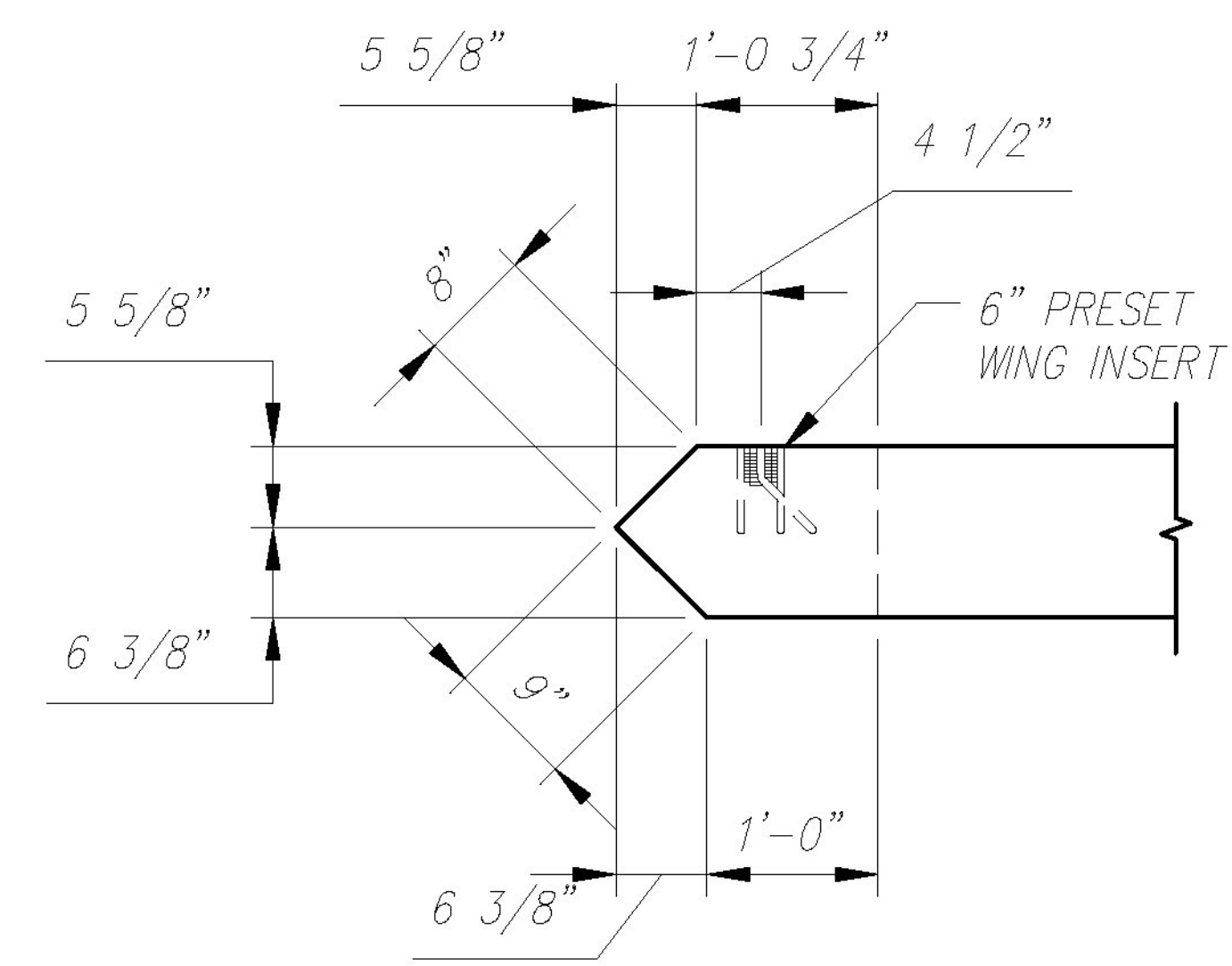
WW1 - BILL OF MATERIALS / EMBEDS				
CSI ID#	DESCRIPTION	QTY	UM	COMMENTS
DTJ	CERTI-VEX PENSEAL 244 40% AIM	0.37	GA	
CSANC-C	CONSPAN WINGWALL ANCHOR C	2	EA	
EM-0005A	1" X 6" PRESET WING INSERTS, GALVANIZED	2	EA	
EM-00034	4" FOAM CORE PVC	1	FT	
EM-00115	UTILITY ANCHOR 8" - GALVANIZED	3	EA	
DTJ	REBAR #4 STAINLESS STEEL	156	LB	
DTJ	REBAR #5 STAINLESS STEEL	72	LB	
MX-FA5000SC30	MIX DSGN - FLY ASH - 5000 - SELF COMPACT	2.43	CY	

WATER REPELLENT ON FRONT FACE, TOP AND SIDES OF WINGWALL, AND 1'-0" DOWN FROM TOP ON BACK FACE.

ALL REINFORCING TO BE STAINLESS STEEL



**ELEVATION**  
Scale: 1/4" = 1'-0"



**1 WW CONNECTION DETAIL**  
Scale: 1/2" = 1'-0"

Vermont Agency of Transportation  
**RECEIVED**  
CK'D BY CLB OK'D BY CWC  
February 16, 2018  
RESUBMIT NO Approved  
BY C. CARLSON DATE 02/16/18

Rev.	Date	DESCRIPTION	By
4	12/13/17	NO CHANGES TO THIS SHEET	BSS
3	12/01/17	NO CHANGES TO THIS SHEET	BSS
2	11/02/17	NO CHANGES TO THIS SHEET	BSS
1	08/17/17	REV PER CUSTOMER REVIEW	BSS
REVISIONS			

6								
5								
CONCRETE SYSTEMS INC. 9 Commercial Street Hudson, New Hampshire 03051 (800) 342-3374 (603) 889-4163 FAX (603) 889-0039 www.csigroup.com				Drawn By B. SKELTON Date 07/10/2017	Reviewed By B.K./M.S. Date 07/17/2017	Approved By B. SKELTON Date 01/03/2018	B FABRICATION DRAWING WW1 Drawing No. C23199-WW1	REV 4
Quantity: 1		Weight (Tons): 6.70		SHEET 13				