

WINGWALLS NOT SHOWN FOR CLARITY

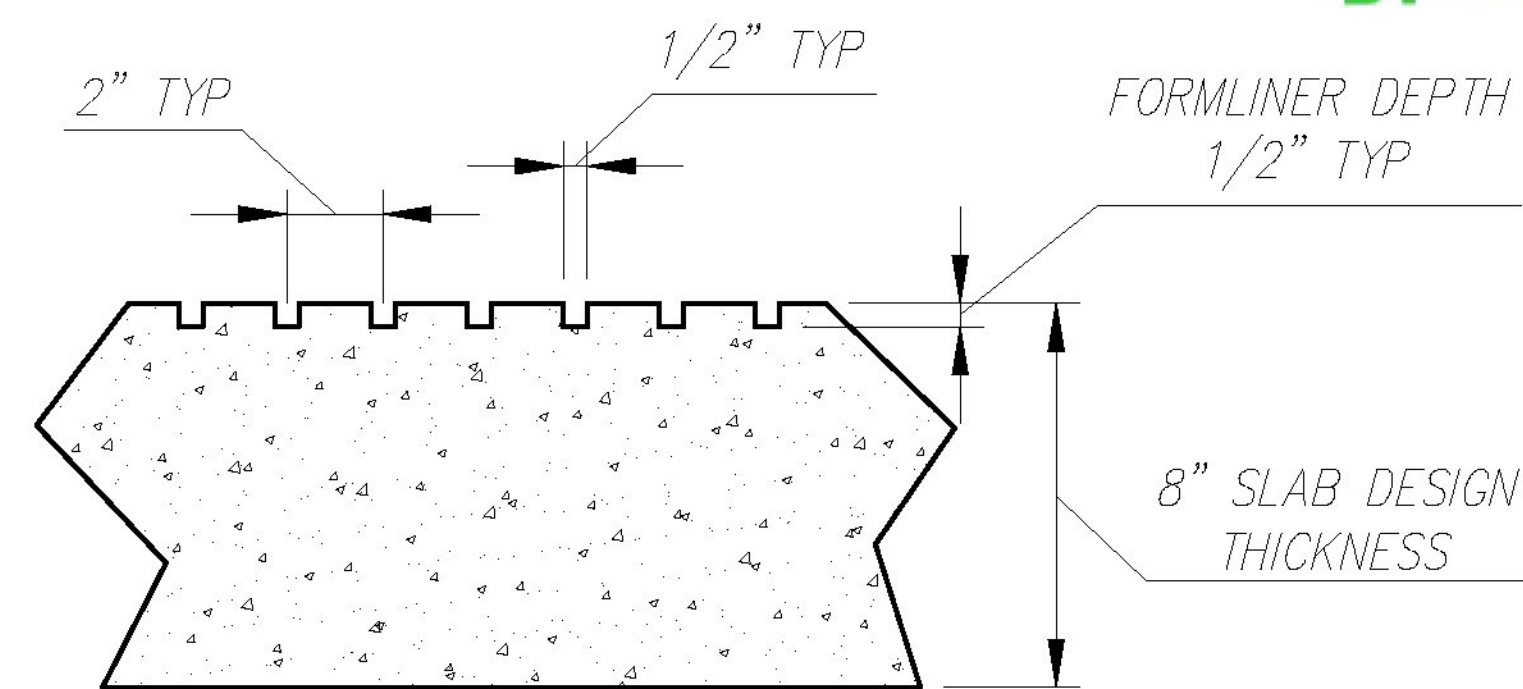
Vermont Agency of Transportation

RECEIVED

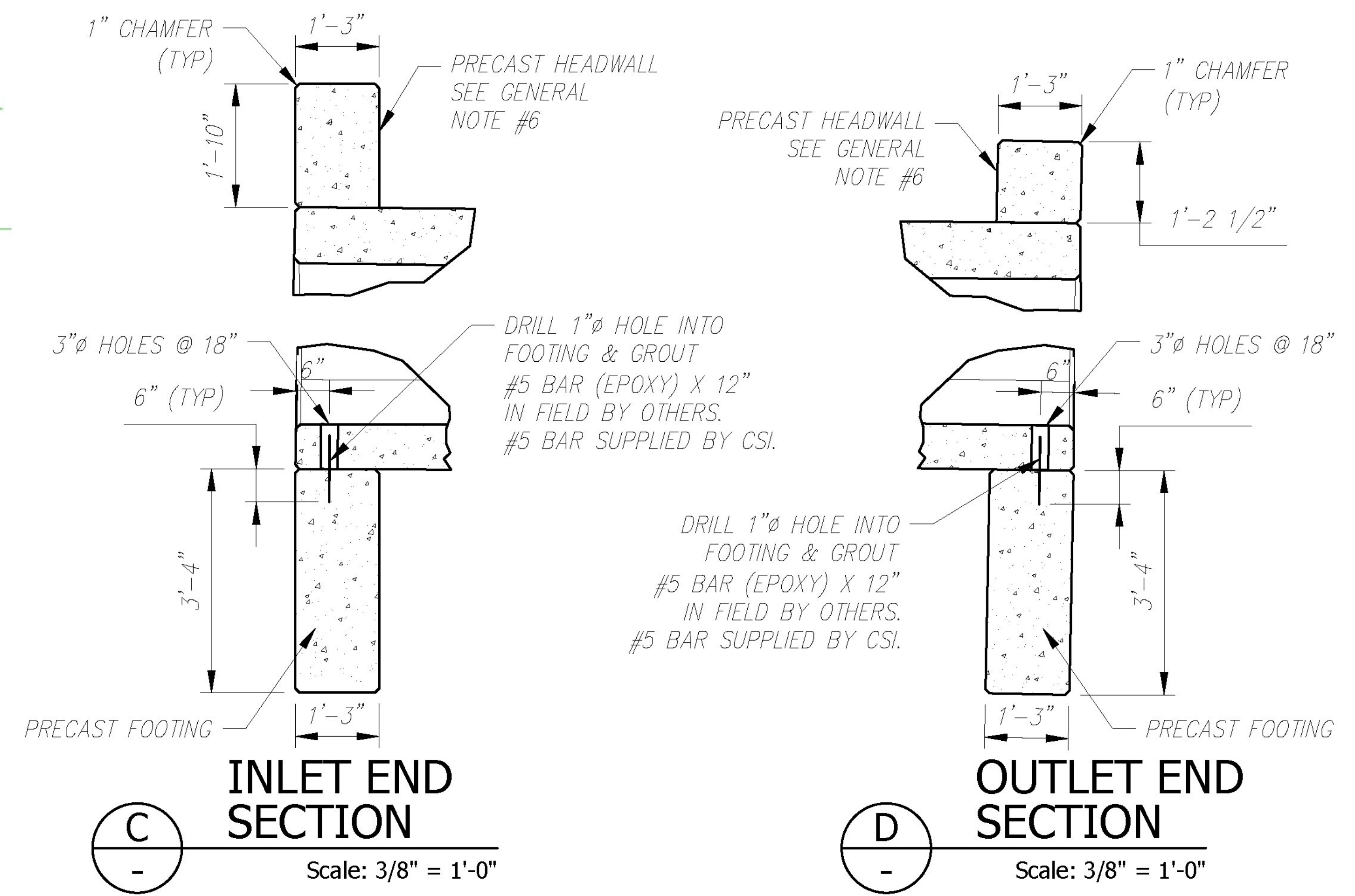
CK'D BY CLB OK'D BY CWC

February 16, 2018

RESUBMIT NO Approved
BY C. CARLSON DATE 02/16/18



1 CULVERT FLOOR DETAIL
Scale: 1 1/2" = 1'-0"



C INLET END SECTION
Scale: 3/8" = 1'-0"

D OUTLET END SECTION
Scale: 3/8" = 1'-0"

Rev.	Date	DESCRIPTION	By
5			
4	12/13/17	REV CLOSURE HARDWARE	BSS
3	12/01/17	NO CHANGES TO THIS SHEET	BSS
2	11/02/17	ADD EMBEDMENT DEPTH TO SECTIONS C & D.	BSS
1	08/17/17	REV PER CUSTOMER REVIEW	BSS
		REVISIONS	

CONCRETE SYSTEMS INC.
9 Commercial Street
Hudson, New Hampshire 03051
(800) 342-3374 (603) 889-4163
FAX (603) 889-0039 www.csigroup.com

Drawn By B. SKELTON Date 07/10/2017
Reviewed By B.K./M.S. Date 07/17/2017
Approved By B. SKELTON Date 01/03/2018

B BOX CULVERT SIDE ELEVATION & DETAILS REV 4
Drawing No. C23199-L01B
Proj. No: STP HES 030-2(28) SHEET 4