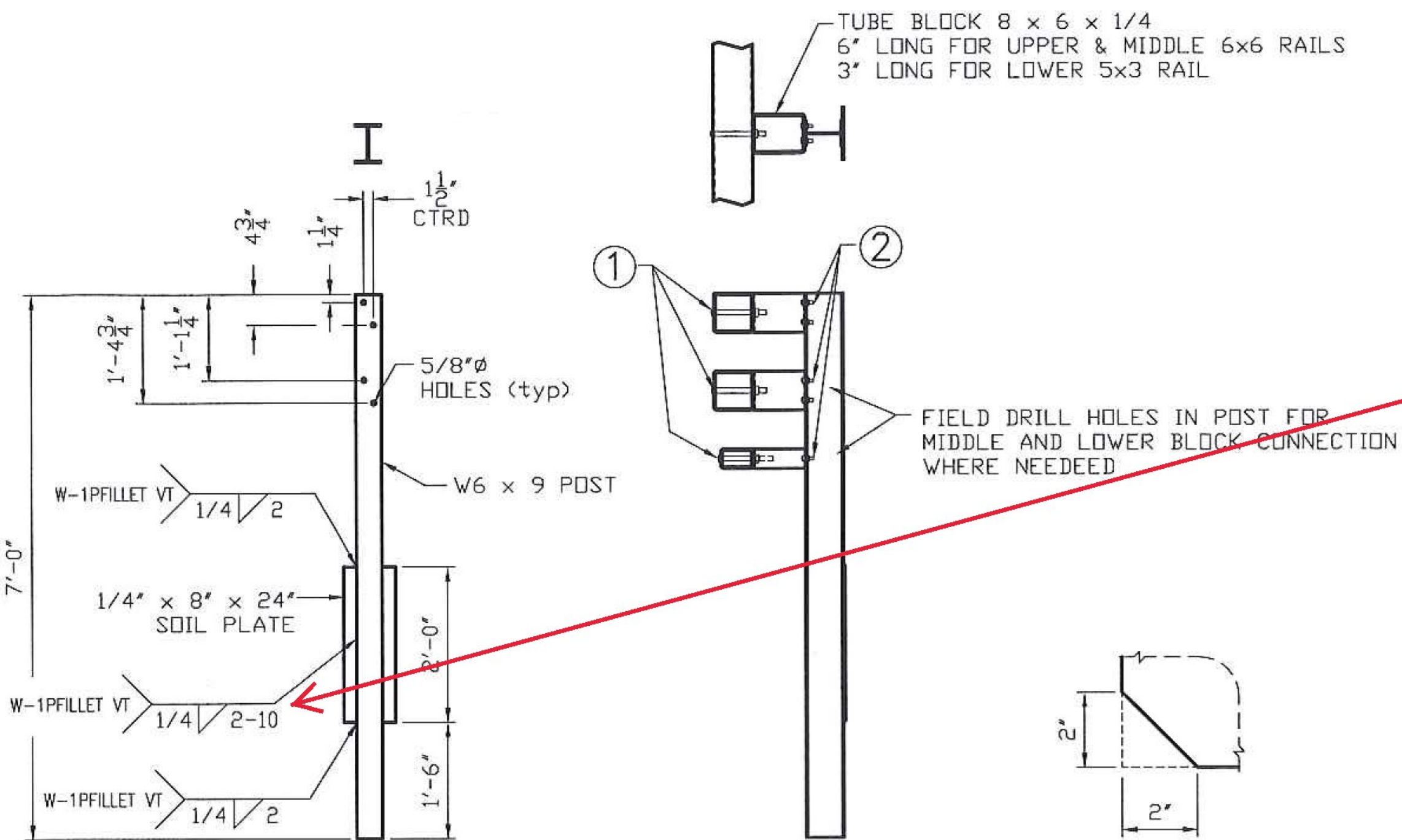
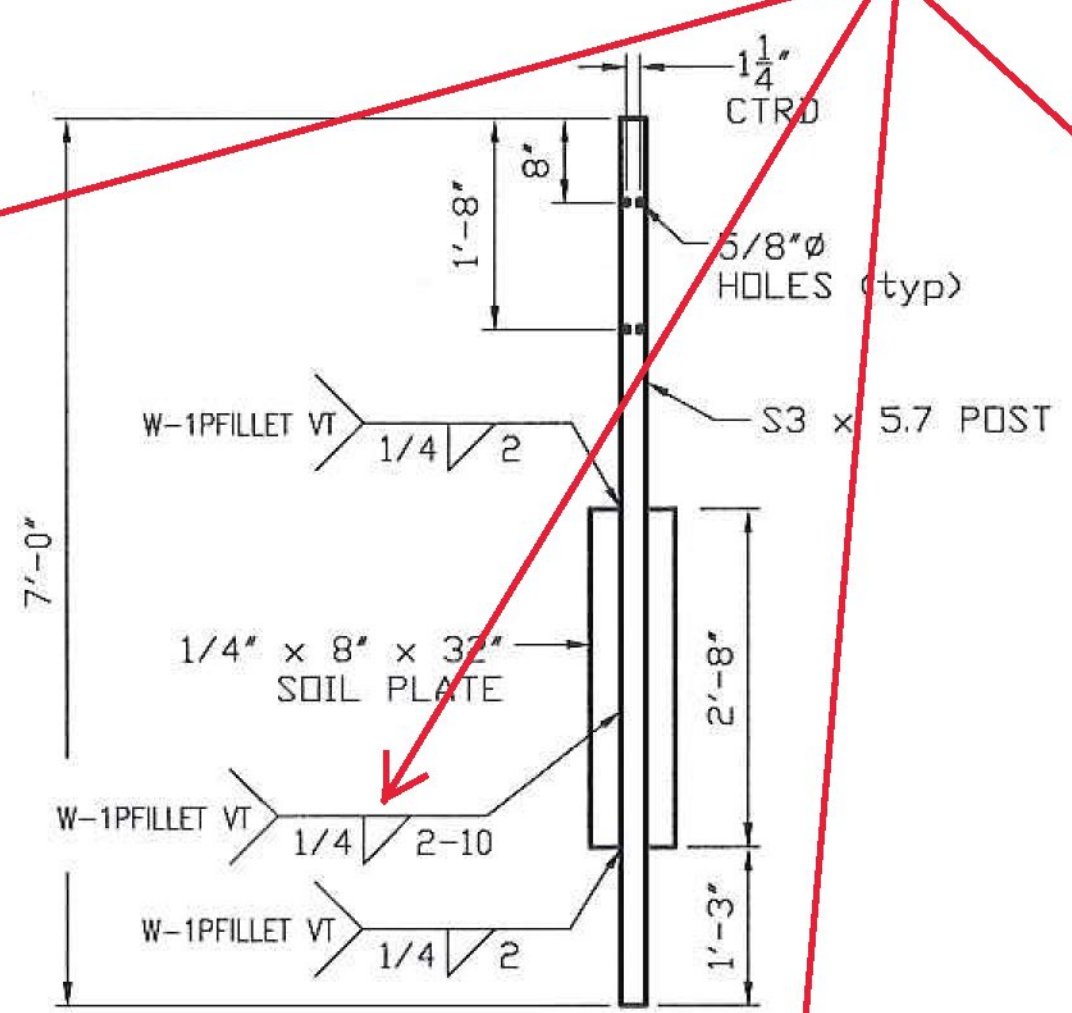


REFER TO VADT STD G-16 FOR TYPICAL BOX BEAM COMPONENT AND CONNECTION DETAILS NOT SHOWN HERE

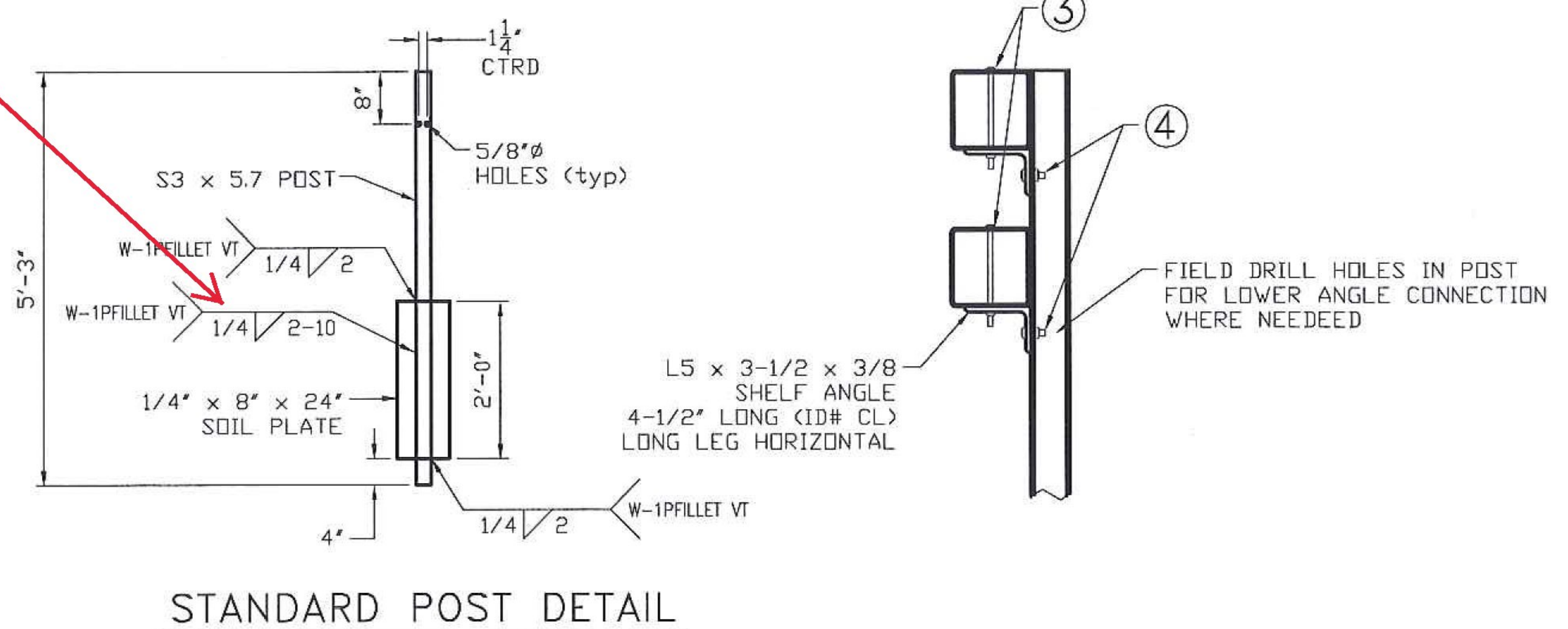
Should be both sides of joint



HEAVY POST DETAIL
(ID# 43)



TRANSITION POST DETAIL
(ID# 29)



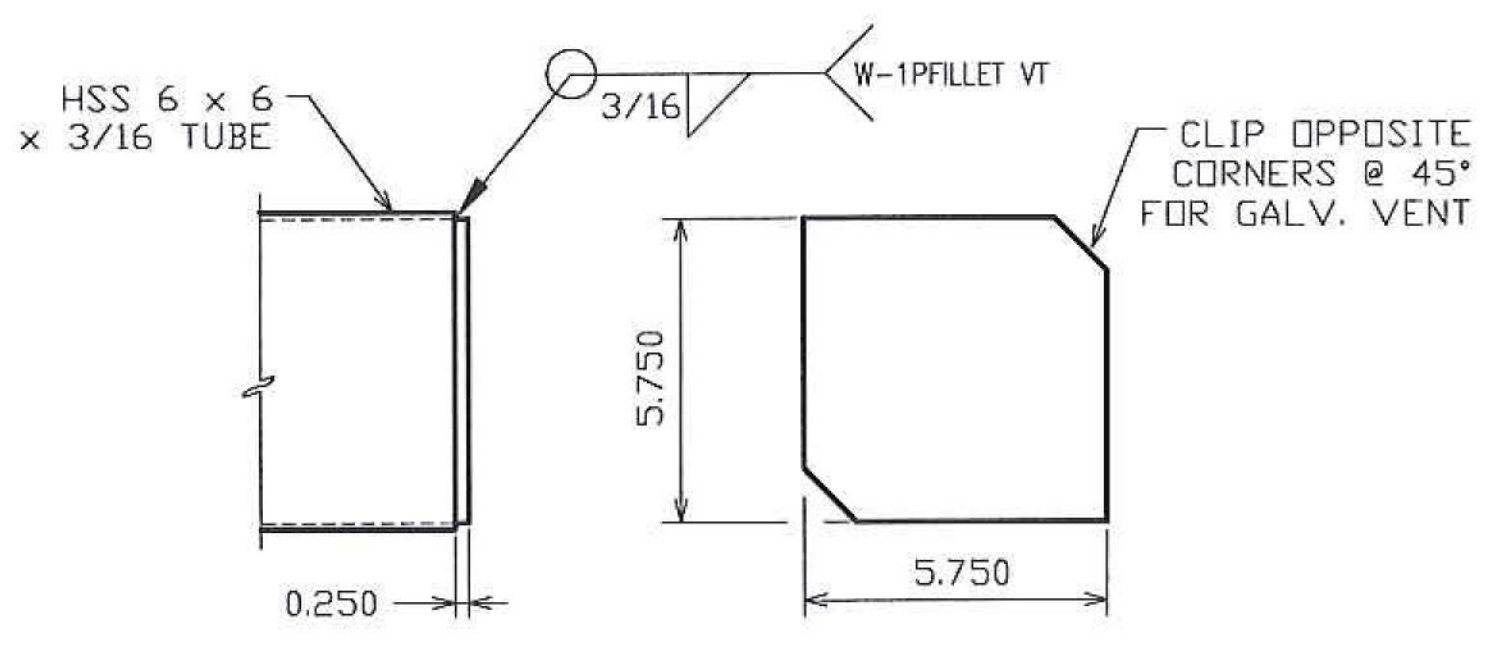
STANDARD POST DETAIL
(ID# 09)

BOTTOM CORNERS OF SOIL PLATES MAY BE CLIPPED 2" x 2" IN FIELD TO FACILITATE DRIVING

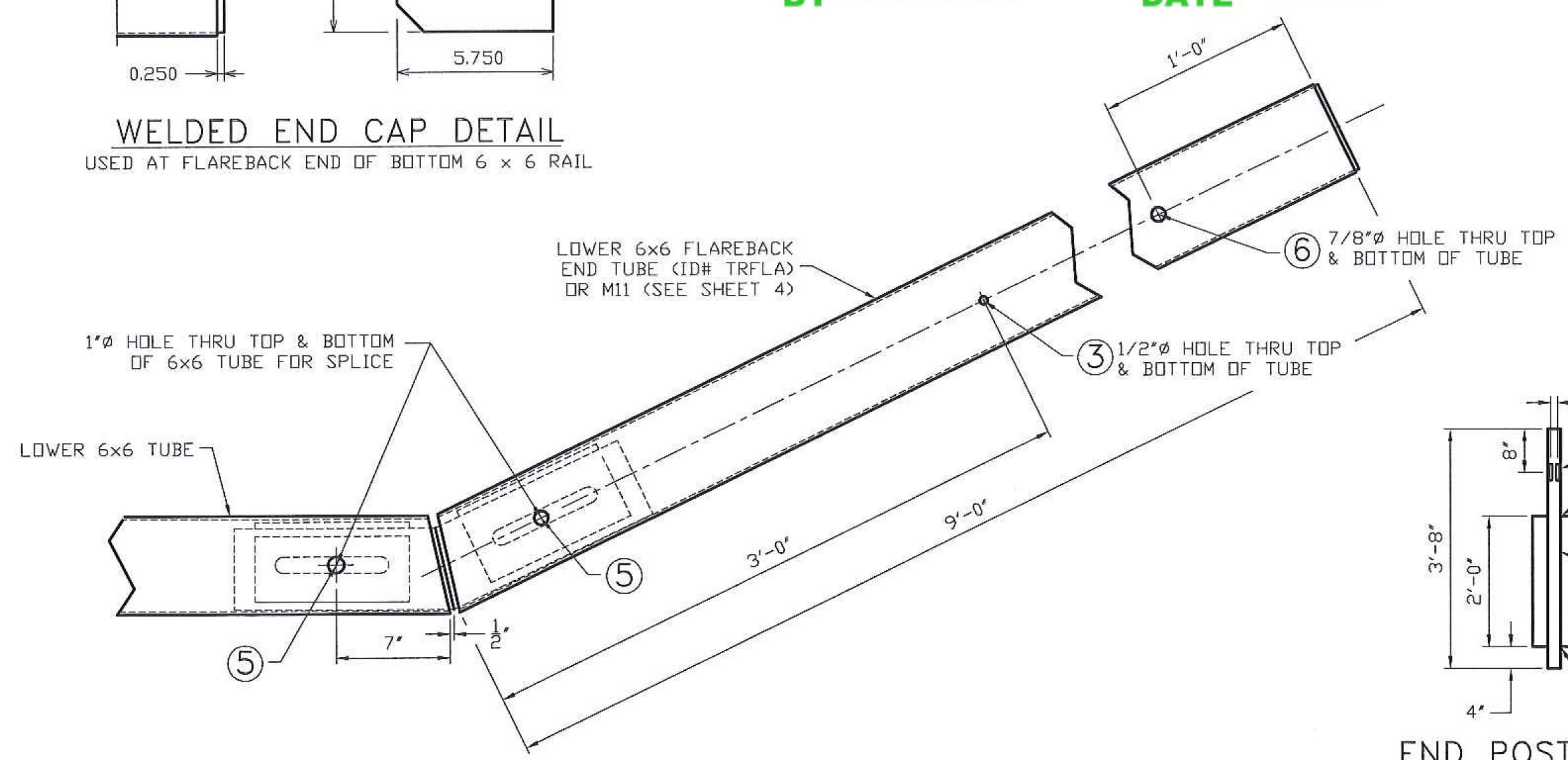
Vermont Agency of Transportation

RECEIVED

CK'D BY **CLB** OK'D BY **CWC**
 April 13, 2018
 RESUBMIT **NO** Approved **AsNoted**
 BY **C. CARLSON** DATE **04/27/18**

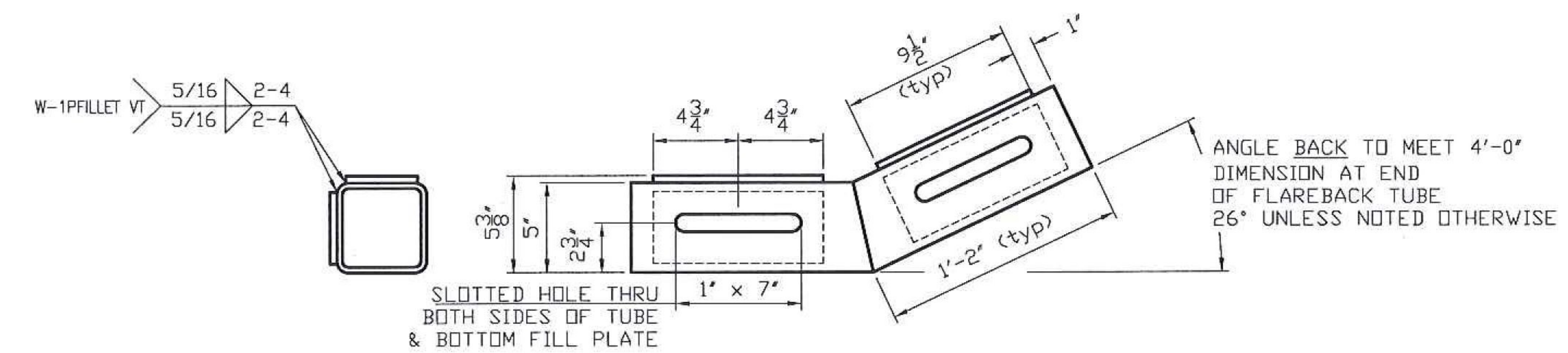


WELDED END CAP DETAIL
USED AT FLAREBACK END OF BOTTOM 6 x 6 RAIL

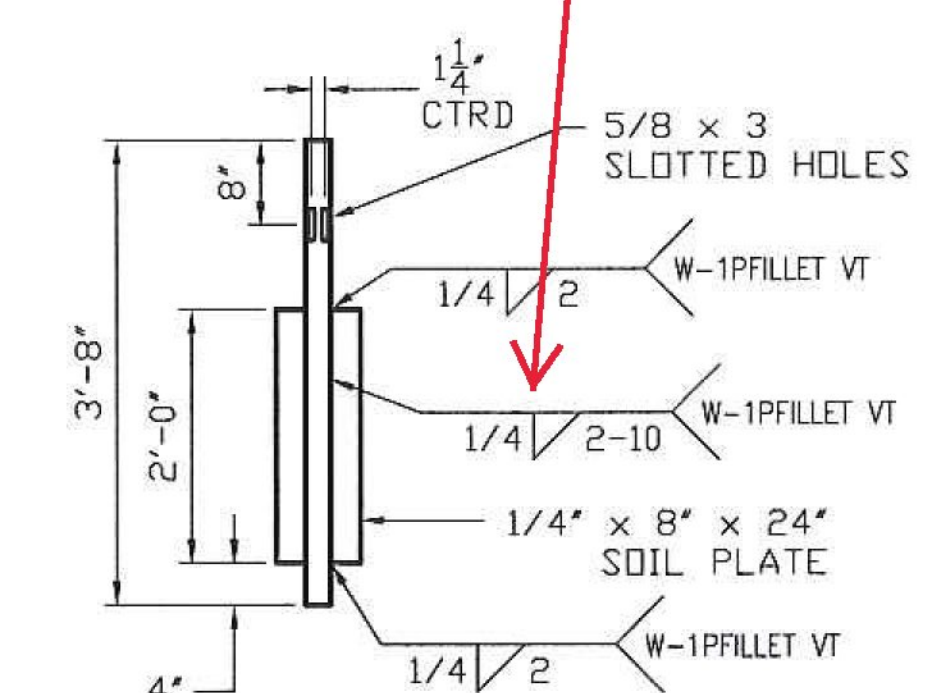


TURN BACK TUBE & SPLICE ASSEMBLY

TYPICAL KICK BACK DIMENSIONS, AS SHOWN, WILL ACCOMMODATE 600'-700' BOX BEAM RADIUS WITHOUT ADDITIONAL BENDING



DOUBLE MITER TURN-BACK SPLICE TUBE
(ID# SPL)



END POST DETAIL
(ID# 17)

HIGHWAY SAFETY CORP		CERTIFIED FABRICATOR
GLASTONBURY, CT 860-633-9445		
ITEM 525.335 BRIDGE RAIL, GALVANIZED, 3 RAIL BOX BEAM ITEM 621.725 GUARDRAIL APPROACH, GALVANIZED, 3 RAIL BOX BEAM VT RT 15A BRIDGE No. 1 TOWN OF MORRISTOWN - LAMOILLE COUNTY, VT BRS 0240(3) S		HSC JOB NO. 2236
GENERAL CONTRACTOR		SHEET NO. 8 of 8
SUB CONTRACTOR LAFAYETTE		
DRAWN PAR	CHECKED	DATE 04-09-18
	SCALE NONE	SIZE D