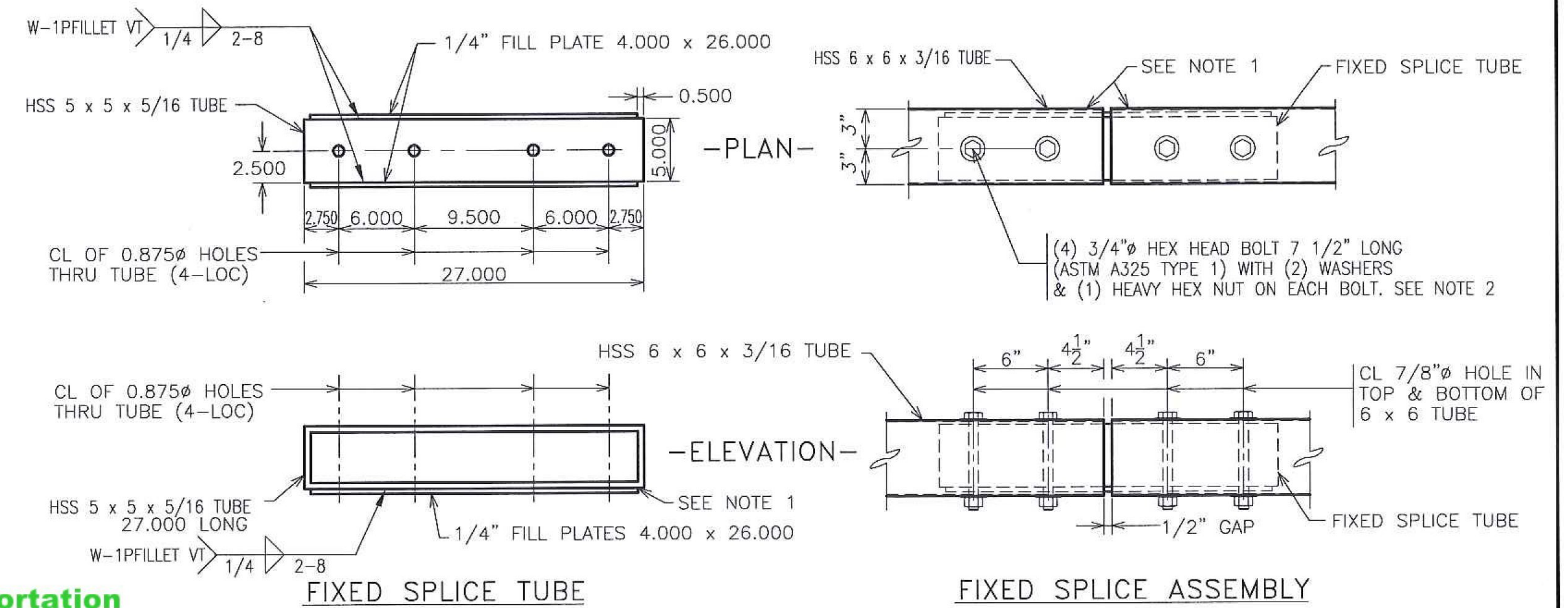
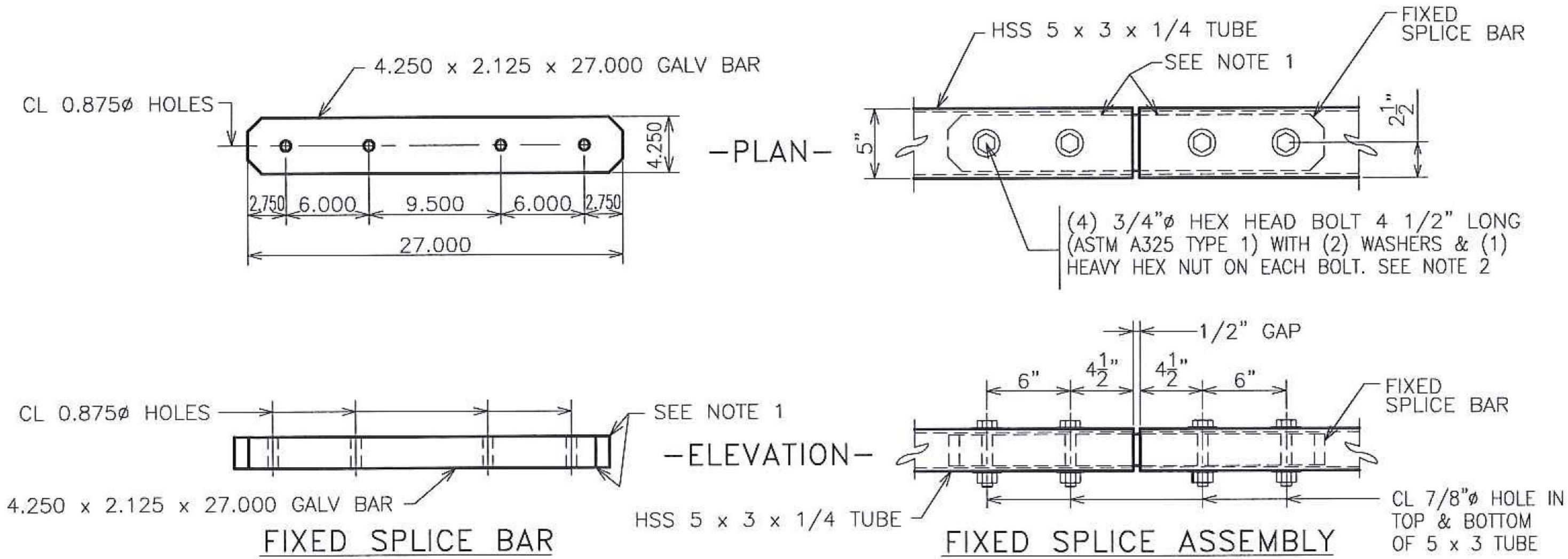


↑ ↓ SPLICE DETAILS FOR 5" x 3" TUBES

↑ ↓ SPLICE DETAILS FOR 6" x 6" TUBES



Vermont Agency of Transportation

RECEIVED

Memo: BRS 0240(3) Bridge Rail Shop Drawings_Resubmit 4-27-18.pdf

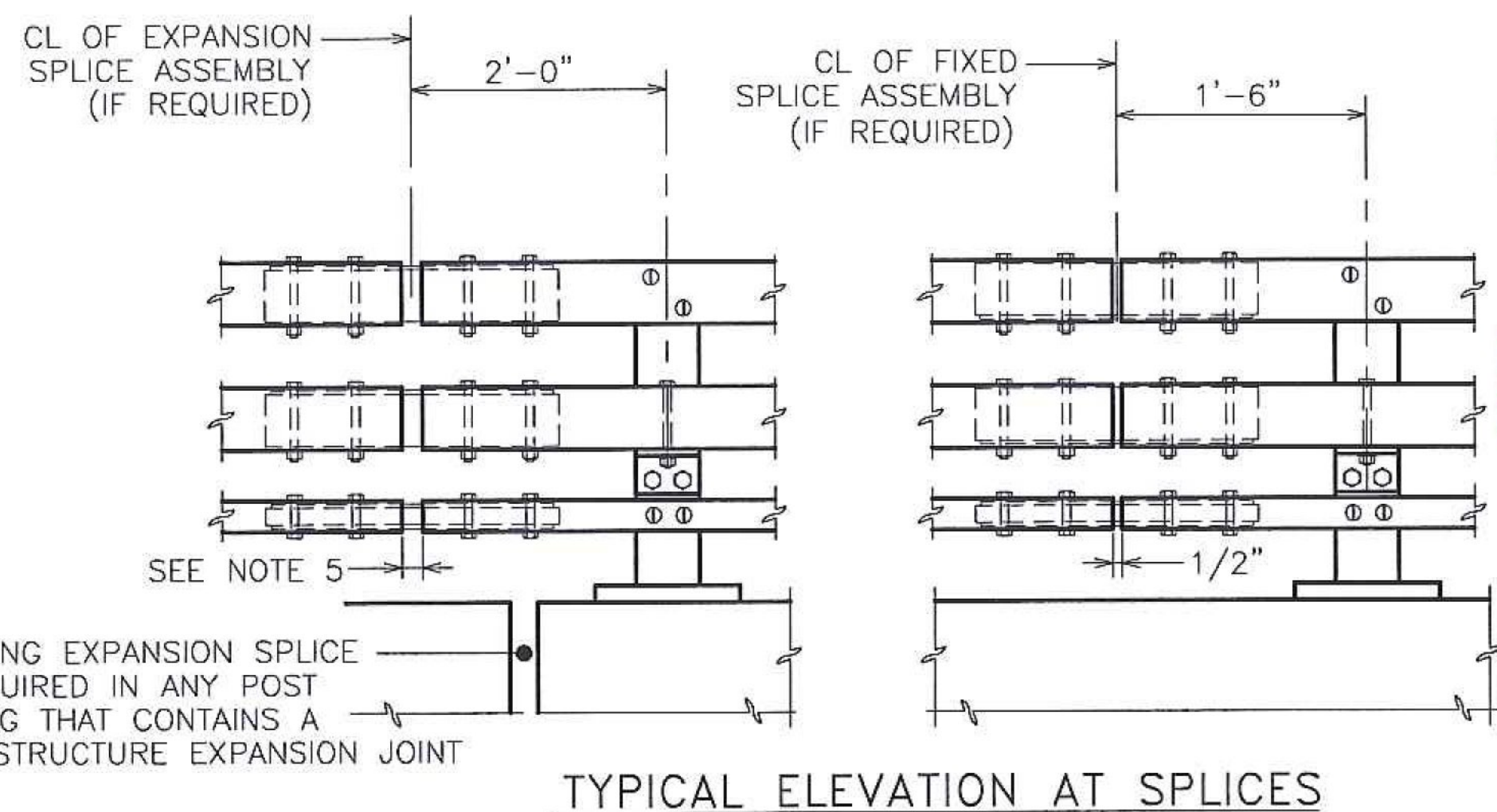
CK'D BY CLB OK'D BY CWC

April 13, 2018

RESUBMIT NO Approved AsNoted
BY C. CARLSON DATE 04/27/18

NOTES:

1. PROTRUSIONS CAUSED BY WELDING OR GALVANIZING ARE NOT PERMITTED ON THE ADJOINING SURFACES OF THE BOX BEAM RAILS, SPLICE TUBES OR FILL PLATES.
2. NUT TO BE FINGER TIGHT AND FIRST THREAD BELOW NUT SHALL BE BURRED TO PREVENT DISLODGING. FOUR (4) BOLTS AT EACH SPLICE.



TYPICAL ELEVATION AT SPLICES

A RAILING EXPANSION SPLICE IS REQUIRED IN ANY POST SPACING THAT CONTAINS A SUPERSTRUCTURE EXPANSION JOINT

HIGHWAY SAFETY CORP

GLASTONBURY, CT
860-633-9445

ITEM 525.335 BRIDGE RAIL, GALVANIZED, 3 RAIL BOX BEAM
ITEM 621.725 GUARDRAIL APPROACH, GALVANIZED, 3 RAIL BOX BEAM
VT RT 15A BRIDGE No. 1
TOWN OF MORRISTOWN - LAMOILLE COUNTY, VT
BRS 0240(3) S

CERTIFIED FABRICATOR

GENERAL CONTRACTOR
SUB CONTRACTOR LAFAYETTE
HSC JOB NO. 2236
SHEET NO. 6 of 8

DRAWN PAR CHECKED DATE 04-09-18 SCALE NONE SIZE D