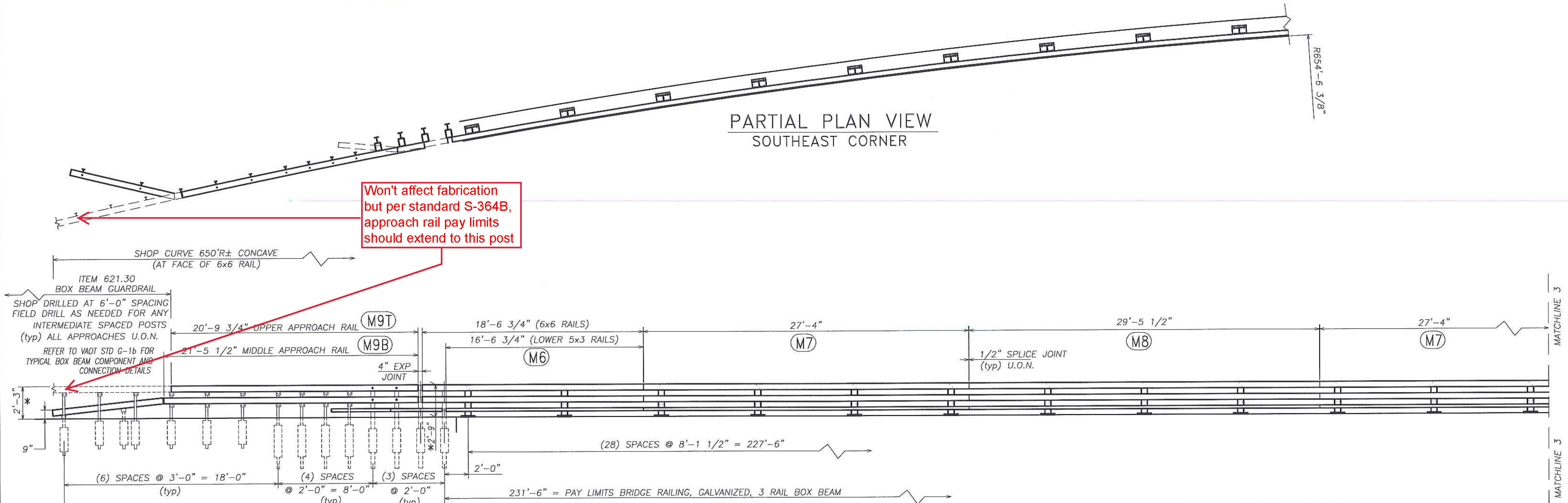


PARTIAL PLAN VIEW
SOUTHEAST CORNER



Won't affect fabrication but per standard S-364B, approach rail pay limits should extend to this post

SOUTH SIDE RAILING ELEVATION
LOOKING AT TRAFFIC FACE OF RAILING
FACING SOUTH FROM CENTERLINE OF ROAD

32'-0" = LIMITS OF ITEM 621.725
GUARDRAIL APPROACH SECTION, GALVANIZED, 3 RAIL BOX BEAM
SEE SHEET 7 & 8 FOR ADDITIONAL APPROACH COMPONENT DETAILS
(typ) ALL CORNERS

* NOTE: APPROACH RAIL HEIGHT TAPERS FROM 2'-9" HIGH AT BRIDGE TO 2'-3" HIGH AT STANDARD BOX BEAM G/R HEIGHT. (typ) ALL CORNERS. RAILING IS DEPICTED STRAIGHT (LEVEL) IN THIS VIEW FOR SIMPLIFICATION. REFER TO SHEET 7 & 8 FOR SPECIFIC APPROACH RAIL DETAILS

Vermont Agency of Transportation
RECEIVED

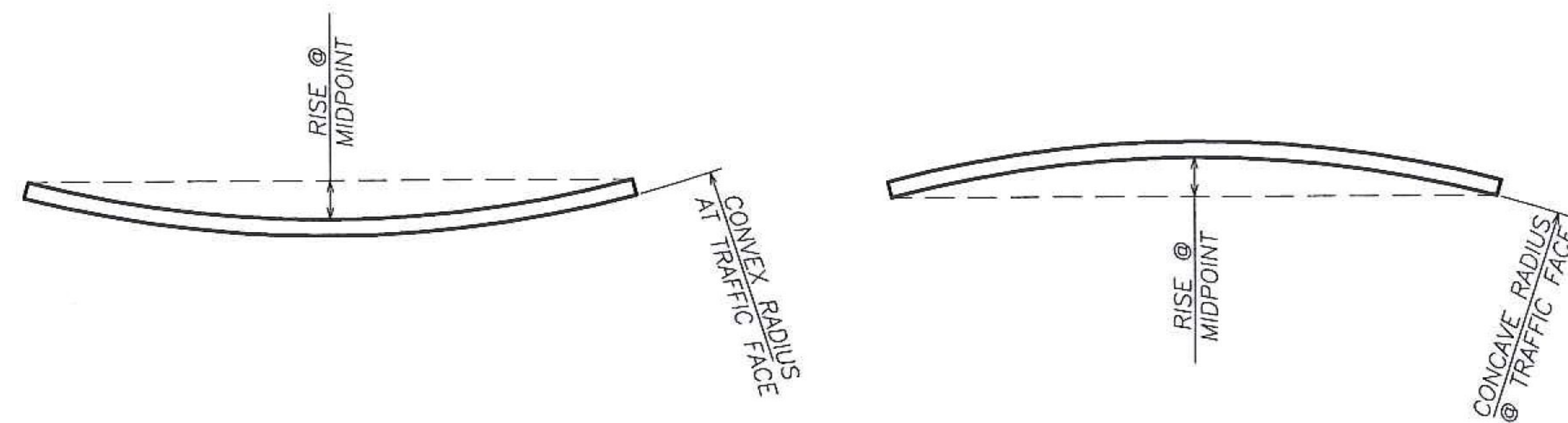
CK'D BY CLB OK'D BY CWC

April 13, 2018

RESUBMIT NO Approved AsNoted
BY C. CARLSON DATE 04/27/18

CURVE DIMENSIONS

ID	radius	OAL	m.o. rise
		dec-ft	inches
M1	6X6 625 convex	29.50	2.125
M2	6X6 625 convex	29.13	2.000
M3	6X6 625 convex	27.08	1.750
M4	6X6 625 convex	26.42	1.625
M6	6X6 650 concave	18.56	0.750
M7	6X6 650 concave	27.33	1.750
M8	6X6 650 concave	29.46	2.000
M1	5X3 625 convex	27.50	1.875
M2	5X3 625 convex	29.13	2.000
M3	5X3 625 convex	27.08	1.750
M4	5X3 625 convex	24.42	1.375
M6	5X3 650 concave	16.56	0.625
M7	5X3 650 concave	27.33	1.750
M8	5X3 650 concave	29.46	2.000
M5T	6X6 625 convex	20.81	1.000
M5B	6X6 625 convex	21.42	1.125
M9T	6X6 650 concave	20.81	1.000
M9B	6X6 650 concave	21.42	1.000
M10T	6X6 special partial curve/partial miter & weld		
M10B	6X6 see details on sheet 4		



SHOP CURVED RAIL DETAILS

SEE NOTES ON SHEET 1 BILL OF MATERIAL REGARDING RADIUS PRECISION

HIGHWAY SAFETY CORP
GLASTONBURY, CT
860-633-9445

ITEM 525.335 BRIDGE RAIL, GALVANIZED, 3 RAIL BOX BEAM
ITEM 621.725 GUARDRAIL APPROACH, GALVANIZED, 3 RAIL BOX BEAM
VT RT 15A BRIDGE No. 1
TOWN OF MORRISTOWN - LAMOILLE COUNTY, VT
BRS 0240(3) S

CERTIFIED FABRICATOR

GENERAL CONTRACTOR
SUB CONTRACTOR LAFAYETTE

HSC JOB NO. **2236**
SHEET NO. **3 of 8**

DATE 04-09-18 SCALE NONE SIZE D