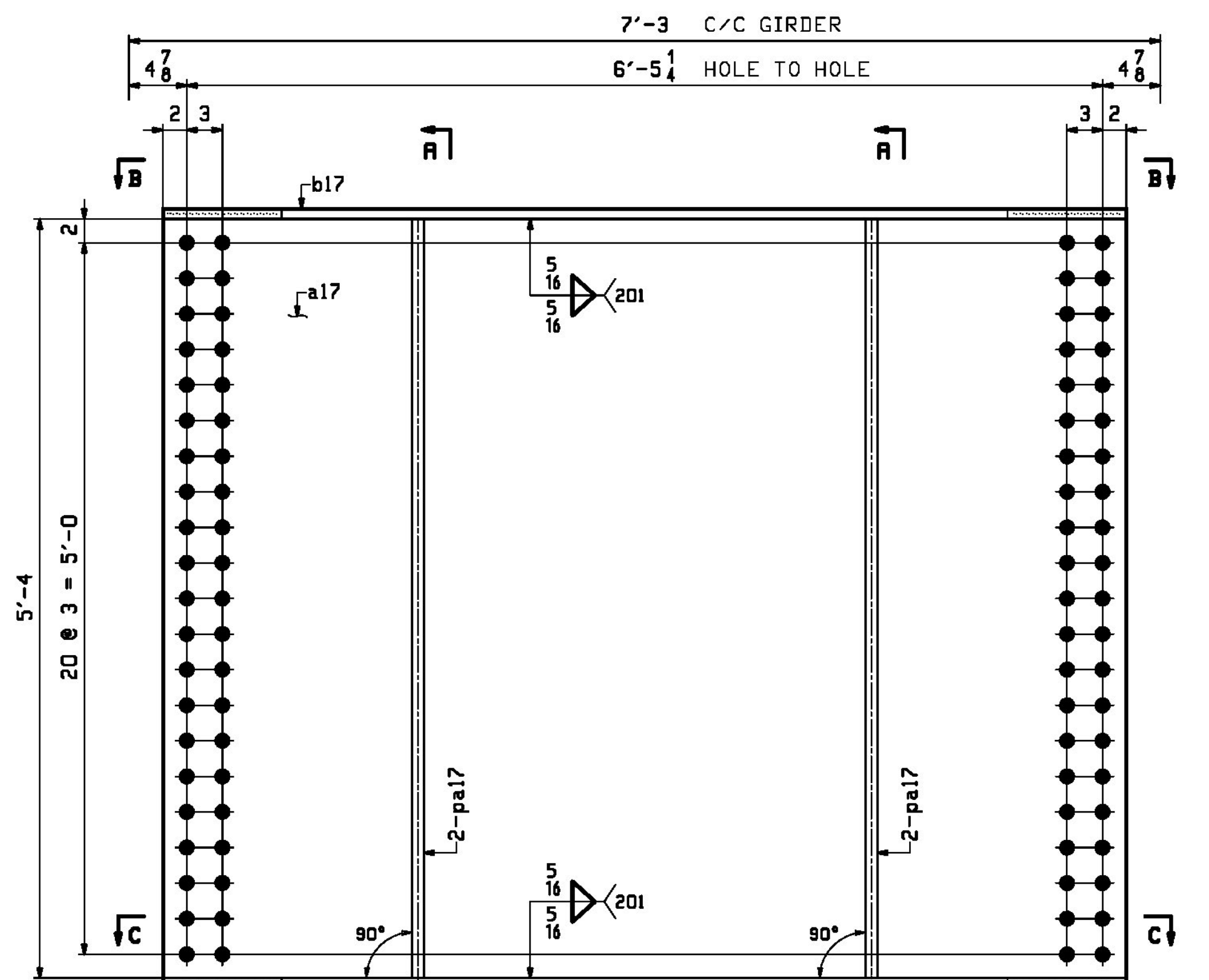
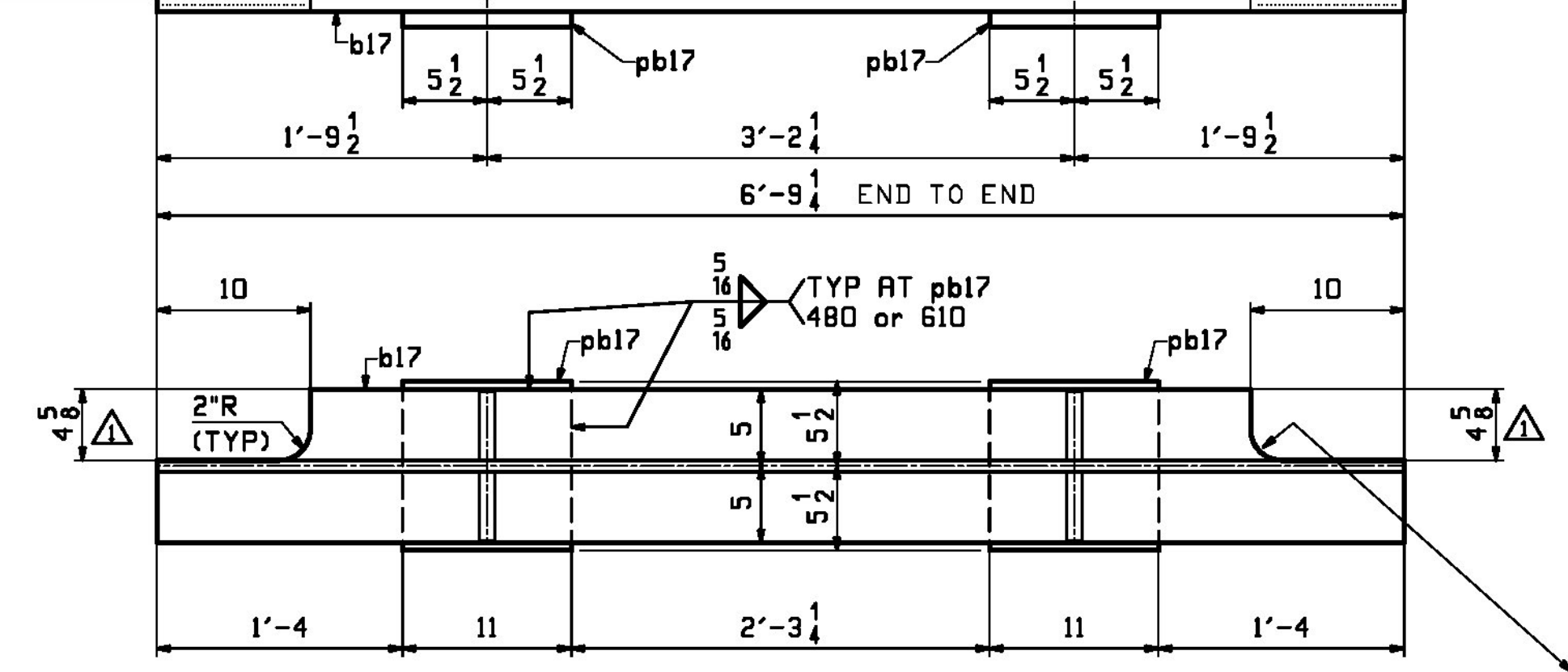


VIEW B-B

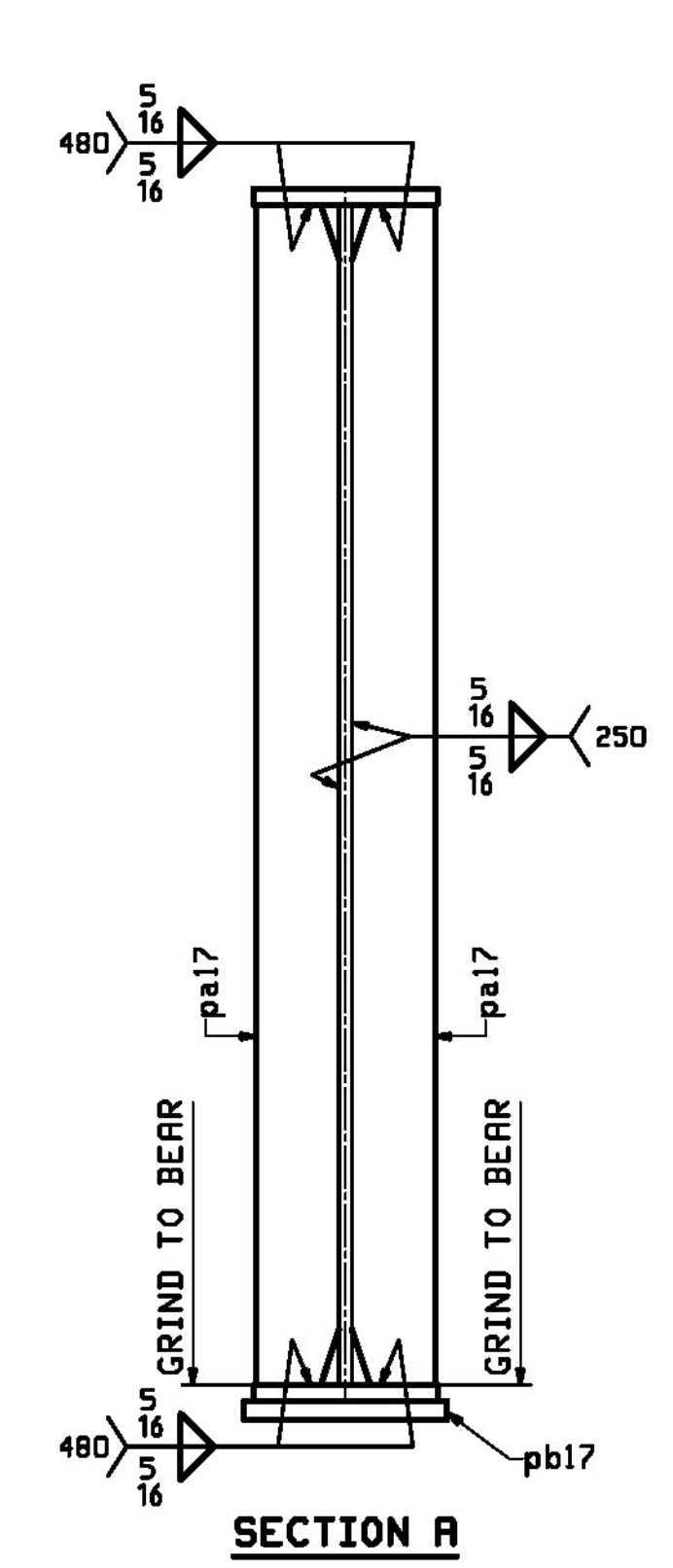


SECTION C-C

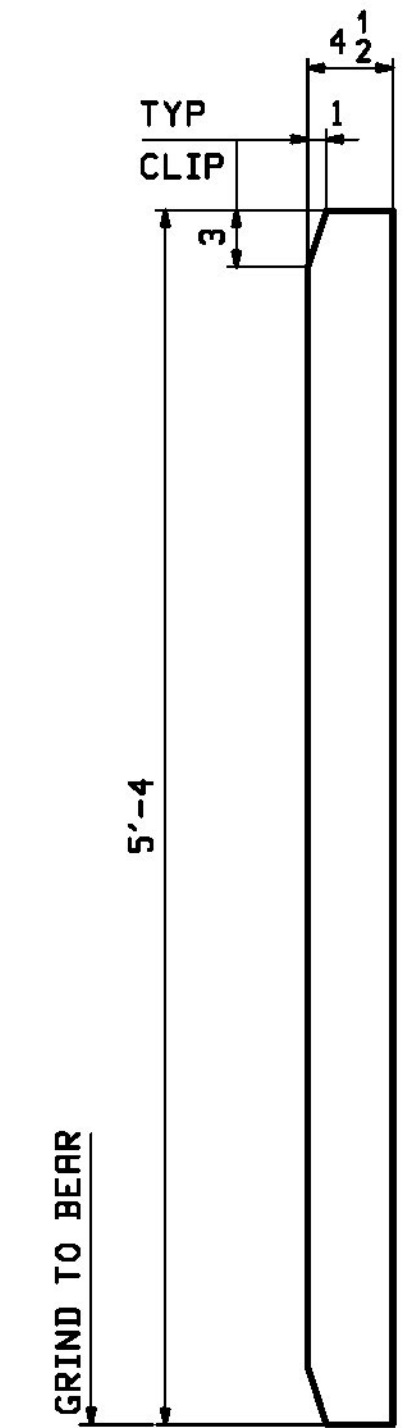


SECTION C-C

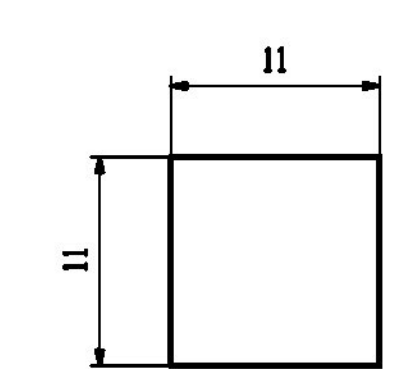
B ~ PIER DIAPHRAGMS - 17D1
(LOOKING BACK-STATION)



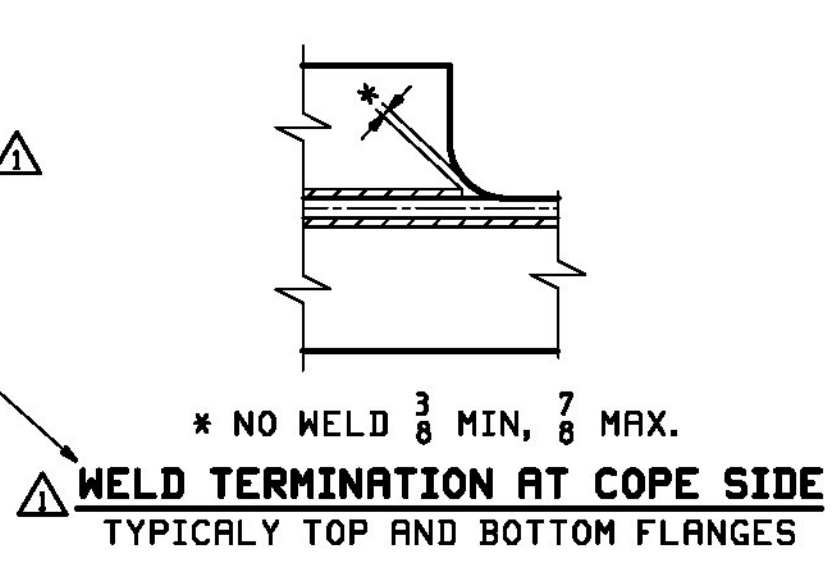
SECTION A



DETAIL - pa17
32 REQ'D



DETAIL - pb17
16 REQ'D



WELD TERMINATION AT COPE SIDE
TYPICALLY TOP AND BOTTOM FLANGES

RBM INFO		BILL OF MATERIAL				JOB NO.	DRAWING NO.	REV.	
						713	17		
PAGE	LINE	MARK	QTY	MARK	MATERIAL	LENGTH FT INCHES	REMARKS	WT	PROCUREMENT NOTES
		17D1	8		PIER DIAPHRAGMS				1904
5	J		8	a17	PL 3/8x64	6 9 1/4	M270-SDWT2		1106
5	K		16	b17	PL 7/8x10	6 9 1/4	M270-SDWT2		202
5	L		32	pa17	PL 1x4 1/2	5 4	MIE		82
5	M		16	pb17	PL 1x11	0 11			34

Vermont Agency of Transportation
RECEIVED
 10-6-17_713_Shop_DrawingL_REV2.pdf
 CK'D BY CLB OK'D BY CWC
 October 5, 2017
 RESUBMIT NO Approved
 BY C. CARLSON DATE 10/05/17

NOTE:
FOR GENERAL NOTES SEE DRAWING GNI.

APPROVAL	9/19/17	APPROVAL COMMENT/WEB PLATE THICKNESS	JTB	WJL		
REV.	DATE	REMARKS	DWN	CHK	APVL	SHOP
MATERIAL:	M270-50W	SURFACE PREP. & PRINT: SEE DWG GNI	HOLES:	17/16" Ø	SHOP BOLTS:	NONE
DESCRIPTION: PIER DIAPHRAGMS						
		CASCO BAY STEEL STRUCTURES, INC. 1 WALLACE AVE. SOUTH PORTLAND, ME 04106 PHONE (207) 780-6722 FAX. (207) 780-6726				
STRUCTURE: VT RTE 15A OVER LAMOILLE RIVER ROUTE No. VT 15A, MAJOR COLLECTOR BRIDGE No. 1 COUNTY OF LAMOILLE			DRAWN: JTB DATE: 08/02		DATE: 08/30	
LOCATION: MORRISTOWN, VT			JOB NO. 713		DWG NO. 17	
PROJ NO. BRS-0240(3)S & STP HES 030-2(28)			CUSTOMER: STATE OF VERMONT R.O.T.		REV. 17	

17D1 - Pier, Bl. 0301 10/05/17 Rev. 1
 10-6-17_713_Shop_DrawingL_REV2.pdf