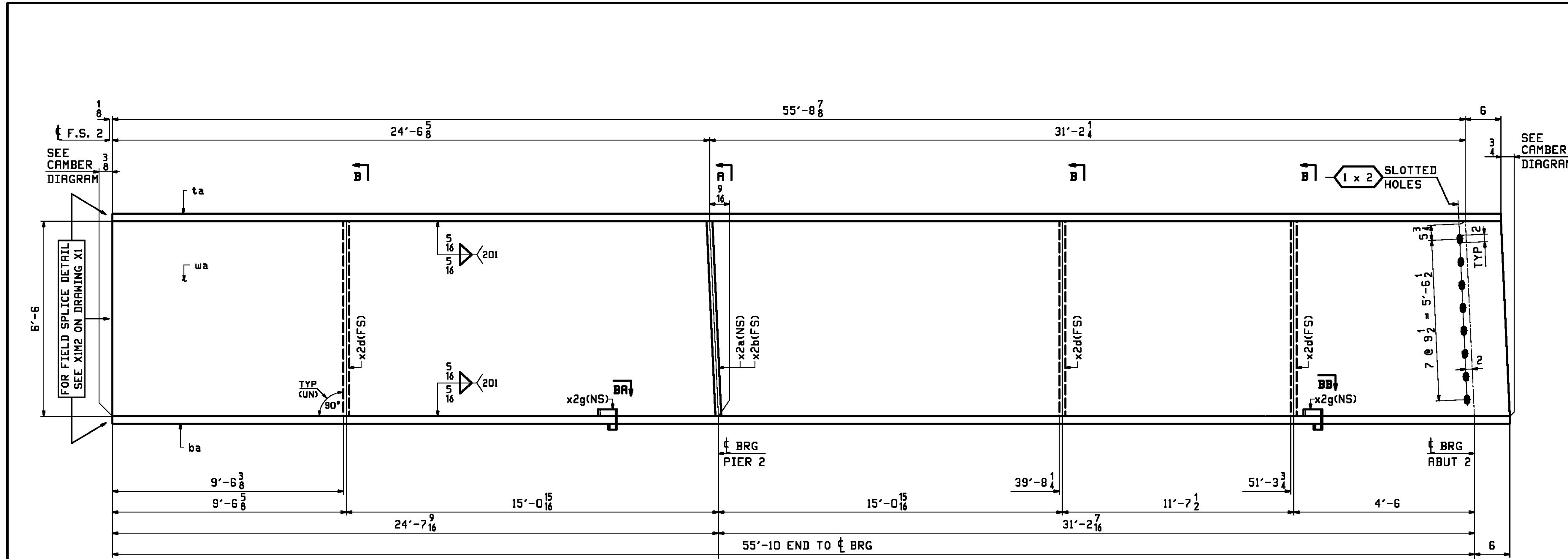
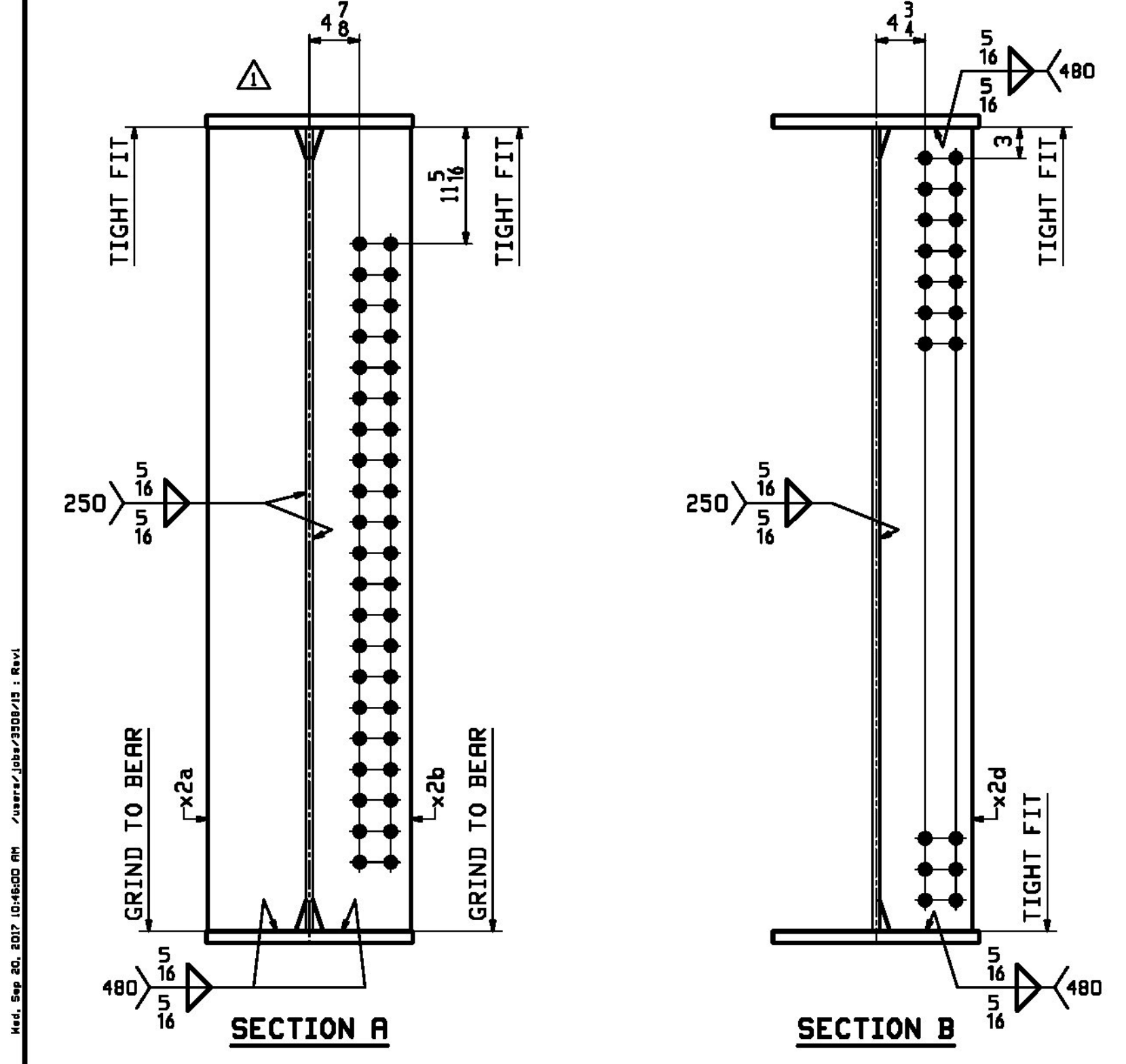
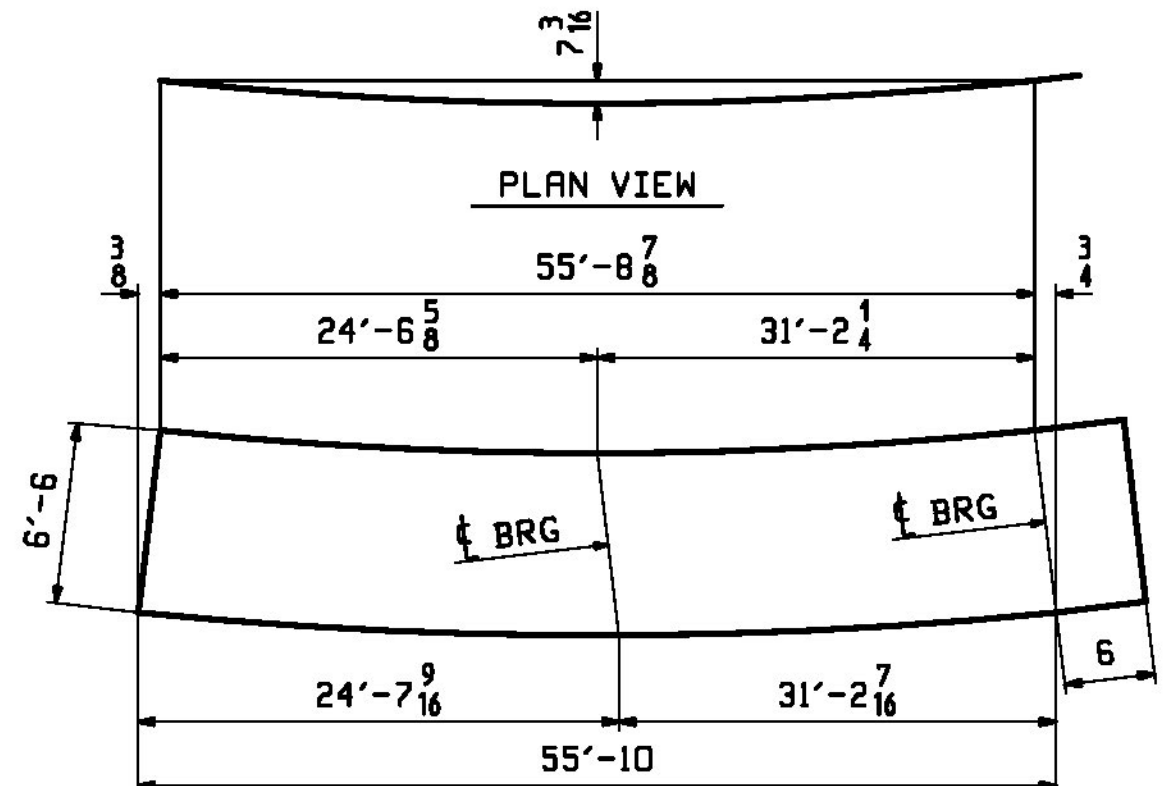


RBM INFO		BILL OF MATERIAL				JOB NO.	DRAWING NO.	REV.	
PAGE	LINE	MARK	QTY	MARK	MATERIAL	LENGTH FT INCHES	REMARKS	HT	PROCUREMENT NOTES
		15G5C	1		GIRDER			19623	
2	Q		1	wa	PL 1/8x78	56 4	M270-SDW		10279
1	L		1	ta	PL 1/8x20	56 2 6/8	M270-SDW		4306
1	J		1	ba	PL 1/8x20	56 4	M270-SDW		4313
4	L		1	x2a	PL 1x9 1/2	6 6	(MIE) M270-SDW		210
4	L		1	x2b	PL 1x9 1/2	6 6	(MIE) M270-SDW		210
4	M		3	x2d	PL 2x9	6 6	M270-SDW		100
4	N		2	x2g	PL 4x3 3/8	1 1 1/4	M270-SDW		3



FOR FIELD SPLICE DETAILS SEE DRAWING X1.  
 FOR GIRDER STANDARDS SEE DRAWING X2.  
 FOR CAMBER DIAGRAM SEE DRAWING C1.  
 FOR FLANGE DIAGRAMS SEE DRAWING F1.  
 FOR GENERAL NOTES SEE DRAWING GNI.  
 T2 DENOTES MATERIAL SUBJECT TO CHARPY V-NOTCH TESTING.  
 FOR HORIZONTAL CURVING DIAGRAMS SEE DRAWINGS HCI.



Vermont Agency of Transportation

**RECEIVED**

10/5/17\_713\_Shop\_Drawing\_REV2.pdf

CK'D BY CLB OK'D BY CWC

October 5, 2017

RESUBMIT NO Approved

BY C. CARLSON DATE 10/05/17

9/19/17	APPROVAL COMMENT	JTB	WJL		
REV. DATE	REMARKS	DWN	CHK	APVL	SHOP
MATERIAL:	SURFACE PREP. & PAINT:	HOLES:		SHOP BOLTS:	
M270-SDW (UN)	SEE DWG GNI	1/2" Ø (UN)		NONE	
DESCRIPTION: GIRDER - 15G5C					
		<b>CASCO BAY STEEL STRUCTURES, INC.</b> 1 WALLACE AVE. PHONE (207) 780-6722 SOUTH PORTLAND, ME 04106 FAX. (207) 780-6726			
STRUCTURE: VT RTE 15A OVER LAMOILLE RIVER ROUTE No. VT 15A, MAJOR COLLECTOR BRIDGE No. 1 COUNTY OF LAMOILLE		DRAWN: JTB DATE: 08/02	DATE: 08/30		
LOCATION: MORRISTOWN, VT		JOB NO. 713	DWG NO. 15		
PROJ NO. BRS-0240(3)S & STP HES 030-2(28)		CUSTOMER: STATE OF VERMONT R.O.T.		REV. 15	