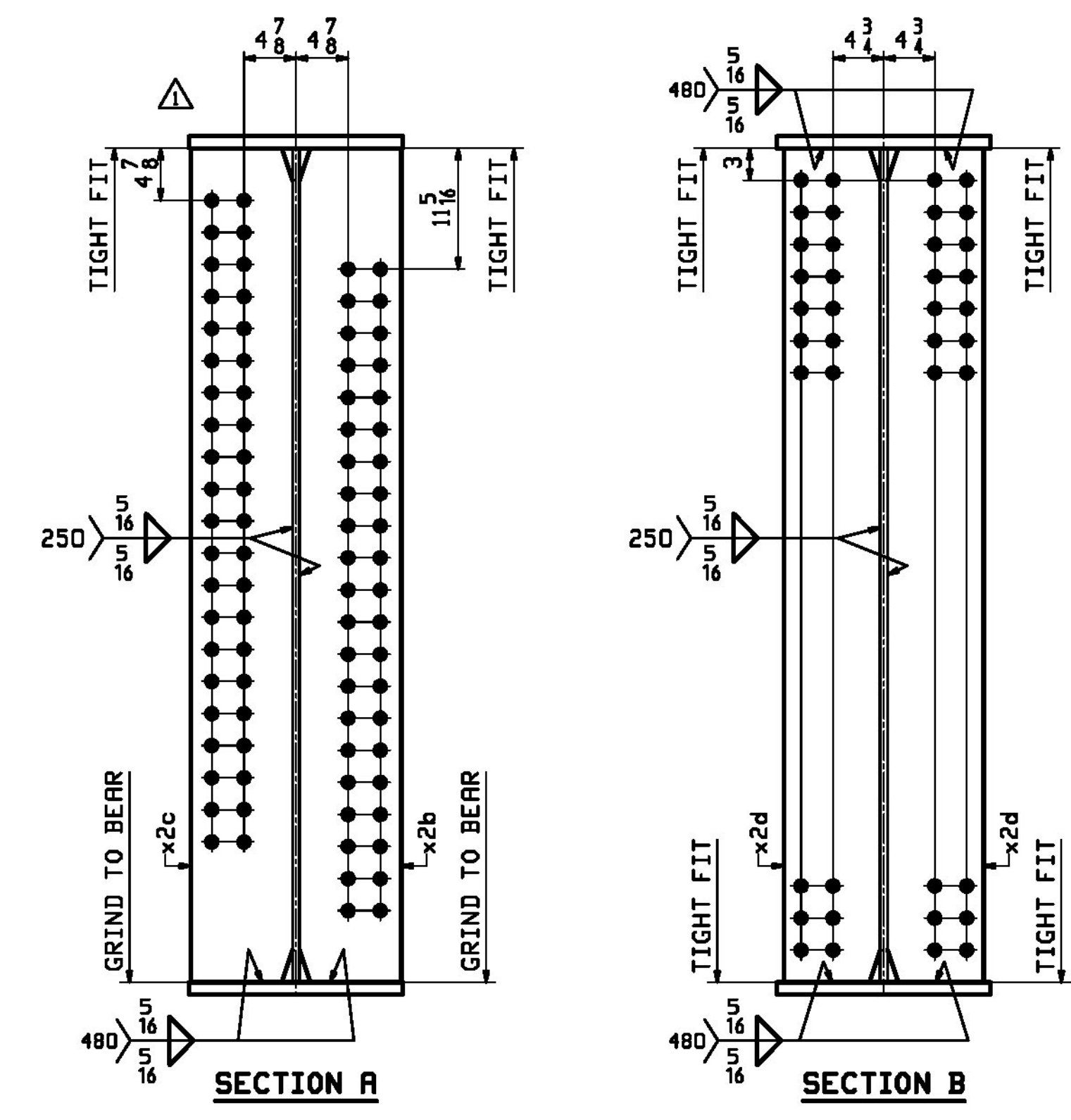
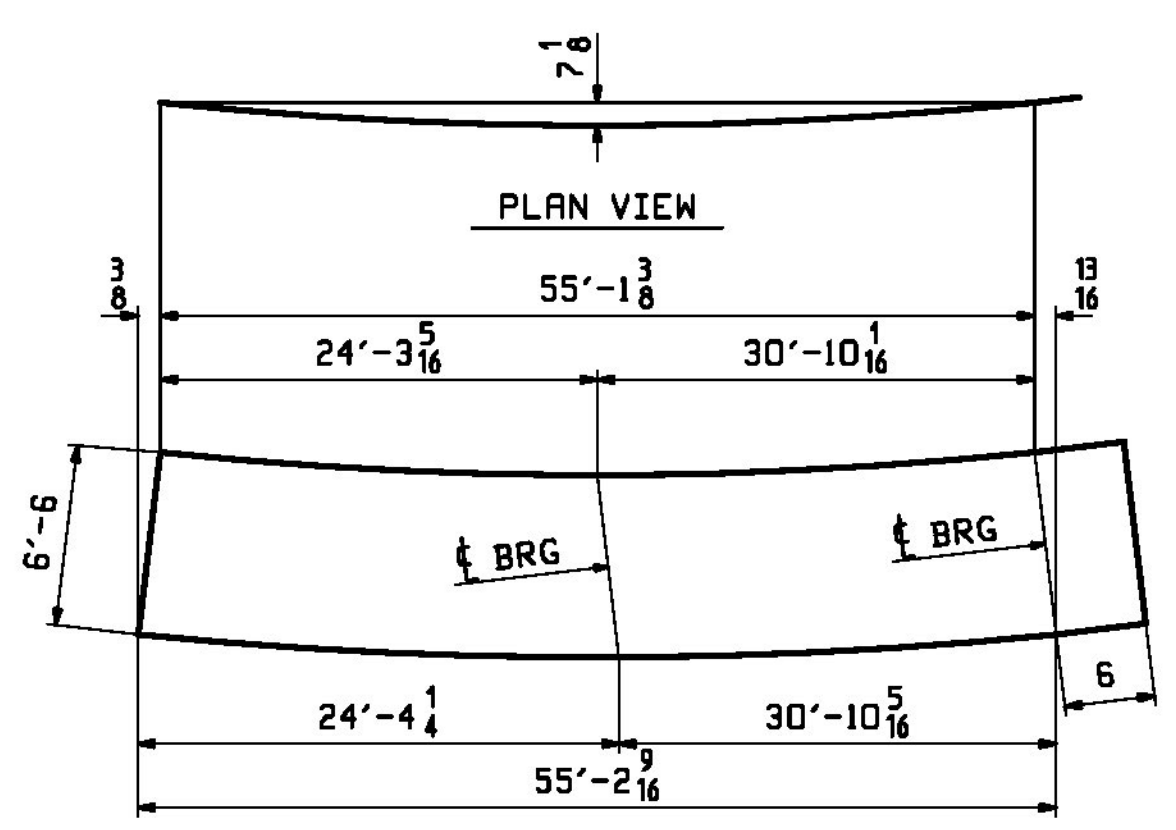


SEE CAMBER DIAGRAM

RBM INFO		BILL OF MATERIAL				JOB NO.	DRAWING NO.	REV.	
PAGE	LINE	MARK	QTY	MARK	MATERIAL	LENGTH FT INCHES	REMARKS	HT	PROCUREMENT NOTES
		14G4C	1		GIRDER			19707	
2	S		1	wa	PL 1/8 x 78	55' 8 9/16	M270-SDWT2	10166	
1	N		1	ta	PL 1/8 x 20	55' 7 3/8	M270-SDWT2	4258	
1	N		1	ba	PL 1/8 x 20	55' 8 9/16	M270-SDWT2	4256	
4	L		1	x2b	PL 1 x 9 1/2	6' 6"	(MIE) M270-SDW	210	
4	L		1	x2c	PL 1 x 9 1/2	6' 6"	(MIE) M270-SDW	210	
4	M		6	x2d	PL 2 x 9	6' 6"	M270-SDW	100	

**ONE - GIRDER - 14G4C (DEVELOPED)**

FOR FIELD SPLICE DETAILS SEE DRAWING X1.  
 FOR GIRDER STANDARDS SEE DRAWING X2.  
 FOR CAMBER DIAGRAM SEE DRAWING C1.  
 FOR FLANGE DIAGRAMS SEE DRAWING F1.  
 FOR GENERAL NOTES SEE DRAWING GNI.  
 T2 DENOTES MATERIAL SUBJECT TO CHARPY V-NOTCH TESTING.  
 FOR HORIZONTAL CURVING DIAGRAMS SEE DRAWINGS HCI.



Vermont Agency of Transportation  
**RECEIVED**  
 CK'D BY CLB OK'D BY CWC  
**October 5, 2017**  
 RESUBMIT NO Approved  
 BY C. CARLSON DATE 10/05/17

APPROVAL	9/19/17	APPROVAL COMMENT	JTB	WJL		
REV.	DATE	REMARKS	DWN	CHK	APVL	SHOP
MATERIAL:	M270-SDW (UN)	SURFACE PREP. & PAINT:	SEE DWG GNI	HOLES:	1 1/2\"/>	
DESCRIPTION:	GIRDER - 14G4C					
STRUCTURE:	VT RTE 15A OVER LAMOILLE RIVER ROUTE No. VT 15A, MAJOR COLLECTOR BRIDGE No. 1 COUNTY OF LAMOILLE		DRAWN:	JTB	DATE:	08/02
LOCATION:	MORRISTOWN, VT	JOB NO.	713	DATE:	WJL	08/30
PROJ NO.	BRS-0240(3)S & STP HES Q30-2(28)	DWG NO.	14	DATE:		
CUSTOMER:	STATE OF VERMONT R.O.T.	REV.		DATE:		

10-6-17\_713\_Shop\_Drawings\_REV-2.pdf