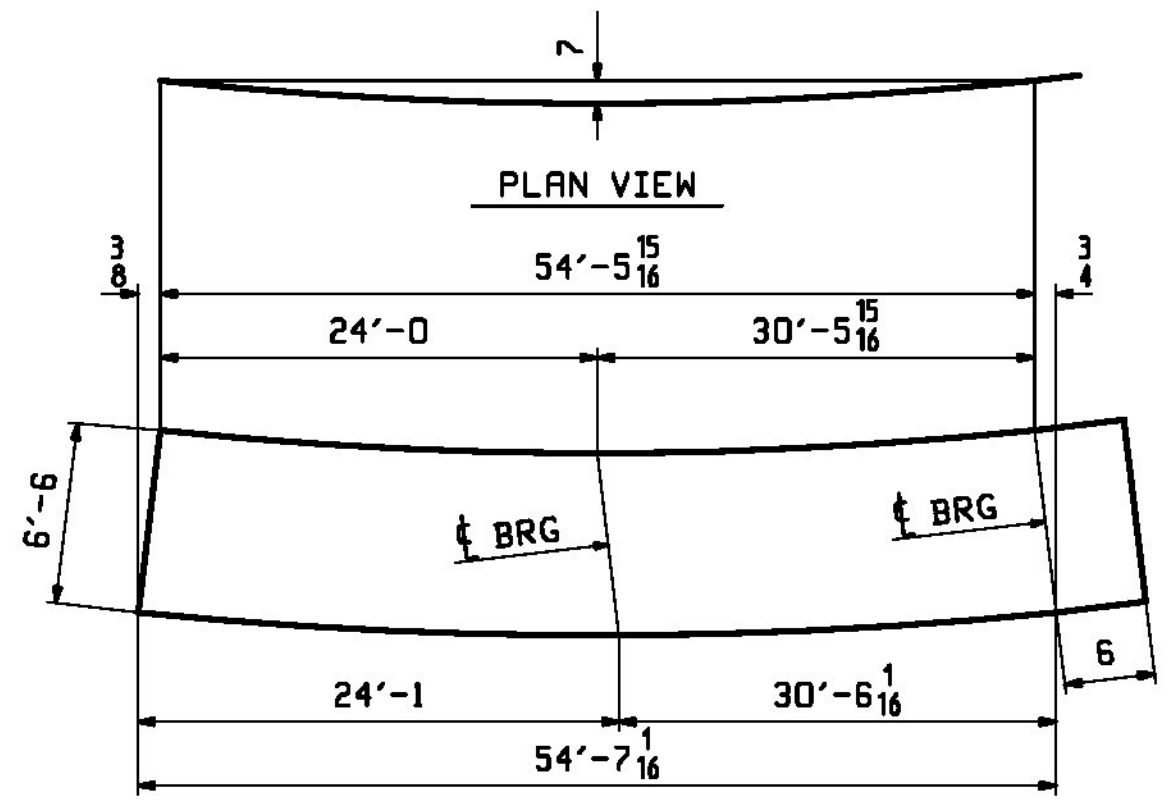


SEE CAMBER DIAGRAM

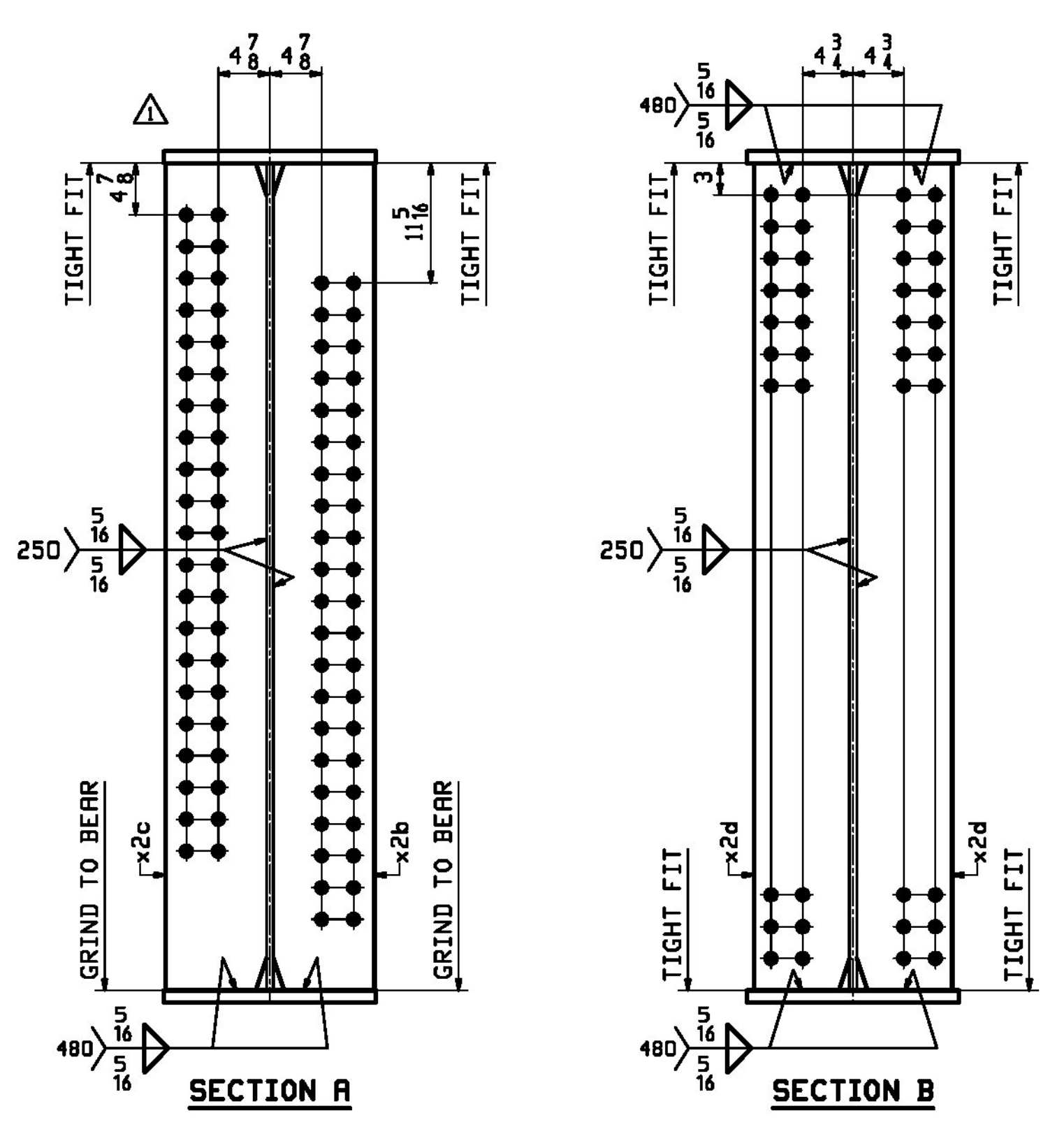
RBM INFO		BILL OF MATERIAL				JOB NO.	DRAWING NO.	REV.	
PAGE	LINE	MARK	QTY	MARK	MATERIAL	LENGTH FT INCHES	REMARKS	HT	PROCUREMENT NOTES
		13G3C	1		GIRDER			19498	
2	U		1	wa	PL 1/2 x 20	55 1 1/16	M270-SDWT2		10052
1	S		1	ta	PL 1/2 x 20	54 11 5/16	M270-SDWT2		4211
1	Q		1	ba	PL 1/2 x 20	55 1 1/16	M270-SDWT2		4218
4	L		1	x2b	PL 1 x 9 1/2	6 6	(MIE) M270-SDW		210
4	L		1	x2c	PL 1 x 9 1/2	6 6	(MIE) M270-SDW		210
4	M		6	x2d	PL 2 x 9	6 6	M270-SDW		100

**ONE - GIRDER - 13G3C (DEVELOPED)**

FOR FIELD SPLICE DETAILS SEE DRAWING X1.  
 FOR GIRDER STANDARDS SEE DRAWING X2.  
 FOR CAMBER DIAGRAM SEE DRAWING C1.  
 FOR FLANGE DIAGRAMS SEE DRAWING F1.  
 FOR GENERAL NOTES SEE DRAWING GNI.  
 T2 DENOTES MATERIAL SUBJECT TO CHARPY V-NOTCH TESTING.  
 FOR HORIZONTAL CURVING DIAGRAMS SEE DRAWINGS HCI.



DEV. ORIENTATION DIAGRAM FOR CAMBER SEE DRAWING C1



Vermont Agency of Transportation  
**RECEIVED**  
 10-5-17\_713\_Shop\_Drawing\_REV2.pdf  
 CK'D BY CLB OK'D BY CWC  
 October 5, 2017  
 RESUBMIT NO Approved  
 BY C. CARLSON DATE 10/05/17

APPROVAL COMMENT	JTB	WJL			
REV. DATE	REMARKS	DWN	CHK	APVL	SHOP
MATERIAL:	SURFACE PREP. & PAINT:	HOLES:		SHOP BOLTS:	
M270-SDW (UN)	SEE DWG GNI	1 1/2" Ø (UN)		NONE	
DESCRIPTION: GIRDER - 13G3C					
		CASCO BAY STEEL STRUCTURES, INC. 1 WALLACE AVE. PHONE (207) 780-6722 SOUTH PORTLAND, ME 04106 FAX. (207) 780-6726			
STRUCTURE: VT RTE 15A OVER LAMOILLE RIVER		DRAWN:	DATE:		
ROUTE No. VT 15A, MAJOR COLLECTOR		JTB	08/02		
BRIDGE No. 1		CHKD:	DATE:		
COUNTY OF LAMOILLE		WJL	08/30		
LOCATION: MORRISTOWN, VT	JOB NO.	DWG NO.			
PROJ NO. BRS-0240(3)S & STP HES 030-2(28)	713	13			
CUSTOMER: STATE OF VERMONT R.O.T.		REV.			